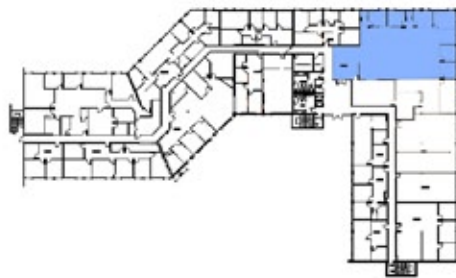
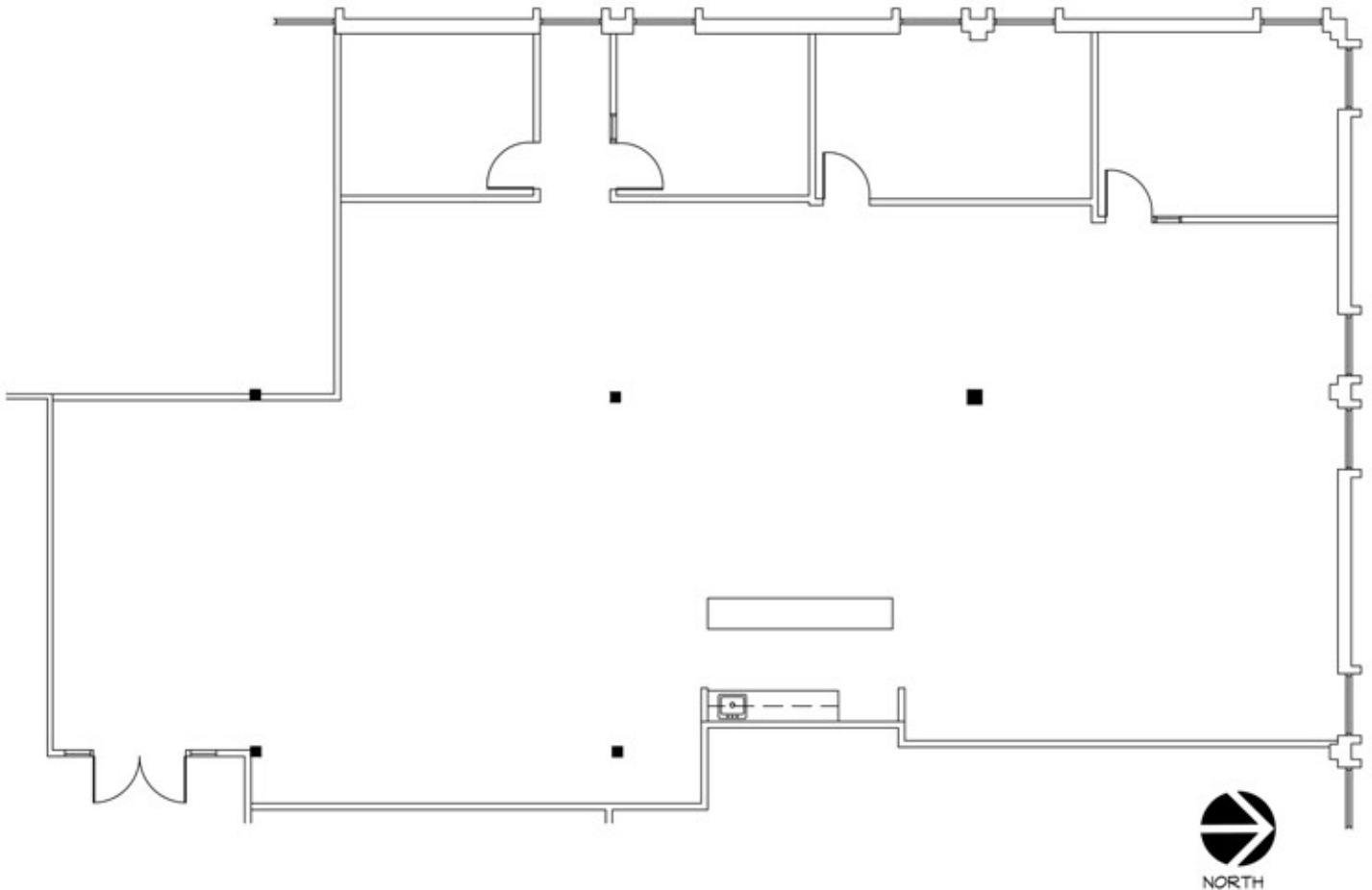


# 1524 I-35 Office Building

## AVAILABLE SPACE

Suite 220 ±4,315 RSF



Dan Lewis  
David Alsmeyer

dlewis@tigusa.com  
dalsmeyer@tigusa.com

**512.732.0400**

901 S. MoPac Expressway, Suite IV-285 | Austin, TX 78746 | [www.tigusa.com](http://www.tigusa.com)