



# OFFICE SPACE FOR LEASE

## O'HARE CORPORATE RUN SOUTH | 2134-2140 S WOLF RD DES PLAINES, IL



**Recent Improvements:**  
Parking Lot  
LED Lighting  
Restrooms  
Common Areas  
HVAC  
Fiber Optics

### BUILDING FEATURES:

- 5,269 SF Available Immediately For Lease
- Renovated Common Areas, Restrooms and HVAC
- Easy Access to I-90 & I-294
- Elevator Access & private restrooms
- Abundant Surface Parking & 24 Hour Access
- 24-7 Tenant Access
- Fiber Optic Connectivity to Building
- Tenant Signage Available on busy Wolf Rd
- Sprinklered Building
- Easy Access to O'Hare Airport
- High Speed Internet! TV Available via Comcast
- Common Area Janitorial is Included
- Motivated Ownership Group
- Great Layouts for Immediate Occupancy
- **Rental Rate: \$14.75-\$15.75 PSF Modified Gross**

### AVAILABLE SPACE

Floor	Size (SF)	Available
Second	5,269 SF	ASAP



### FOR MORE INFORMATION:

RANDY OLCZYK  
Direct: 847.246.9611  
randy@chicagolandcommercial.com

RAY OKIGAWA  
Direct: 847.246.9632  
ray@chicagolandcommercial.com



**Chicagoland  
Commercial  
REAL ESTATE**

4811 Emerson Ave Suite 112, Palatine, IL

LEASING | SALES | TENANT ADVISORY | MANAGEMENT

[www.chicagolandcommercial.com](http://www.chicagolandcommercial.com)

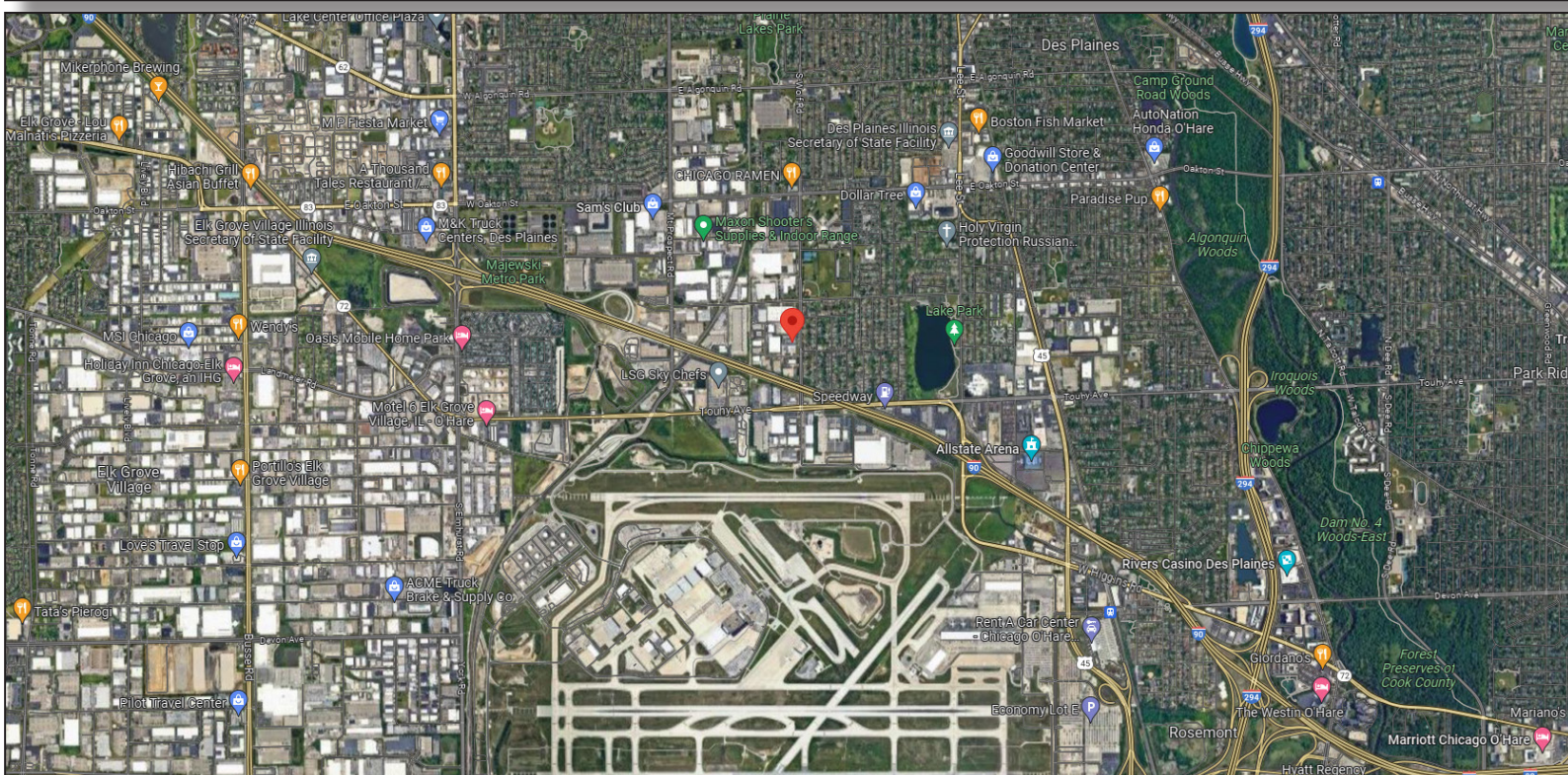
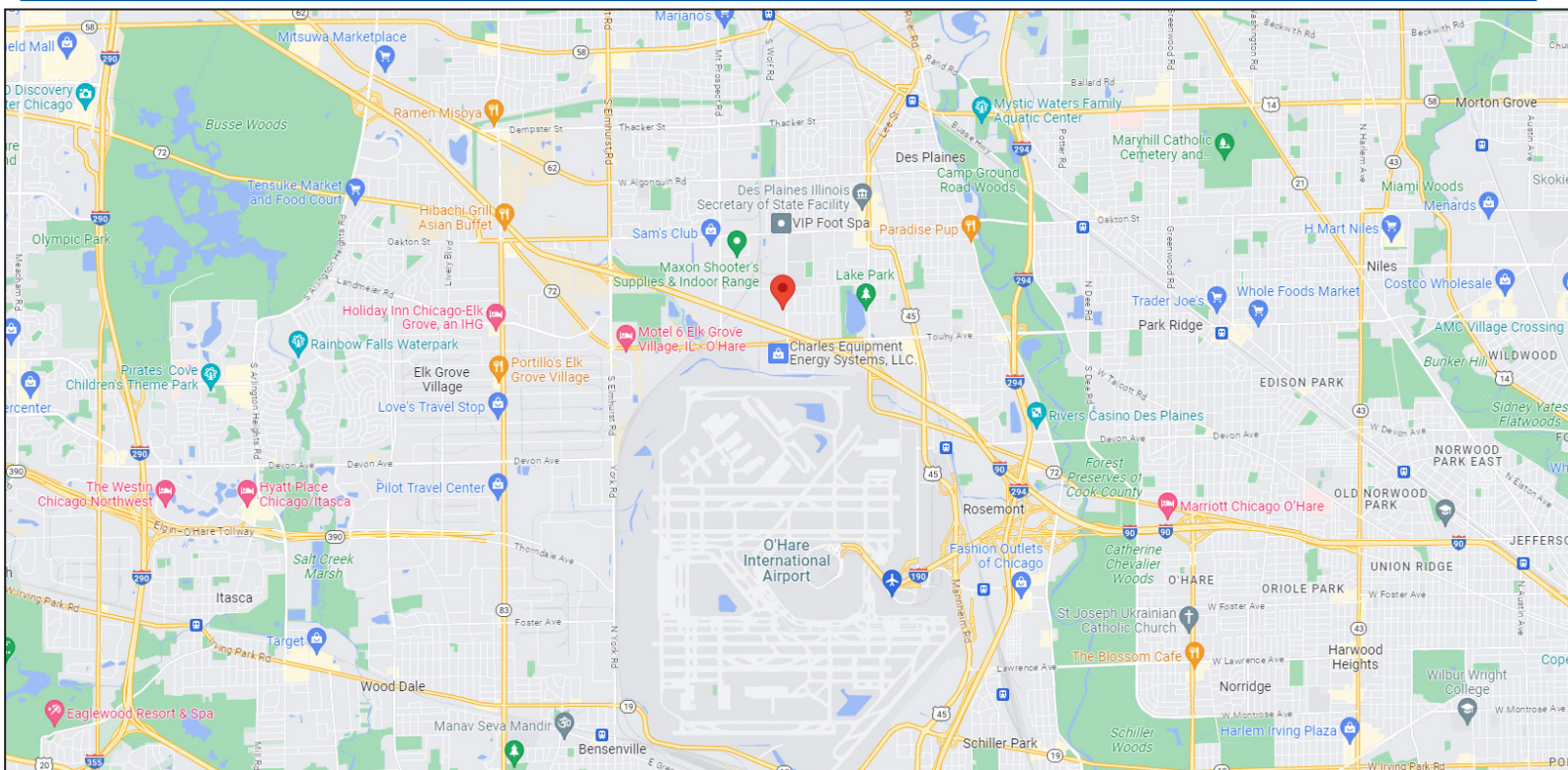




# OFFICE SPACE FOR LEASE

## O'HARE CORPORATE RUN SOUTH | 2134-2140 S WOLF RD DES PLAINES, IL

### AREA MAPS:



### FOR MORE INFORMATION:

RANDY OLCZYK  
Direct: 847.246.9611  
randy@chicagolandcommercial.com

RAY OKIGAWA  
Direct: 847.246.9632  
ray@chicagolandcommercial.com



4811 Emerson Ave Suite 112, Palatine, IL

LEASING | SALES | TENANT ADVISORY | MANAGEMENT

[www.chicagolandcommercial.com](http://www.chicagolandcommercial.com)





# OFFICE SPACE FOR LEASE

## O'HARE CORPORATE RUN SOUTH I 2134-2140 S WOLF RD DES PLAINES, IL

### BUILDING PHOTOS:



RANDY OLCZYK  
Direct: 847.246.9611  
randy@chicagolandcommercial.com

RAY OKIGAWA  
Direct: 847.246.9632  
ray@chicagolandcommercial.com



**Chicagoland**  
**Commercial**  
**REAL ESTATE**

4811 Emerson Ave Suite 112, Palatine, IL

[www.chicagolandcommercial.com](http://www.chicagolandcommercial.com)

LEASING | SALES | TENANT ADVISORY | MANAGEMENT

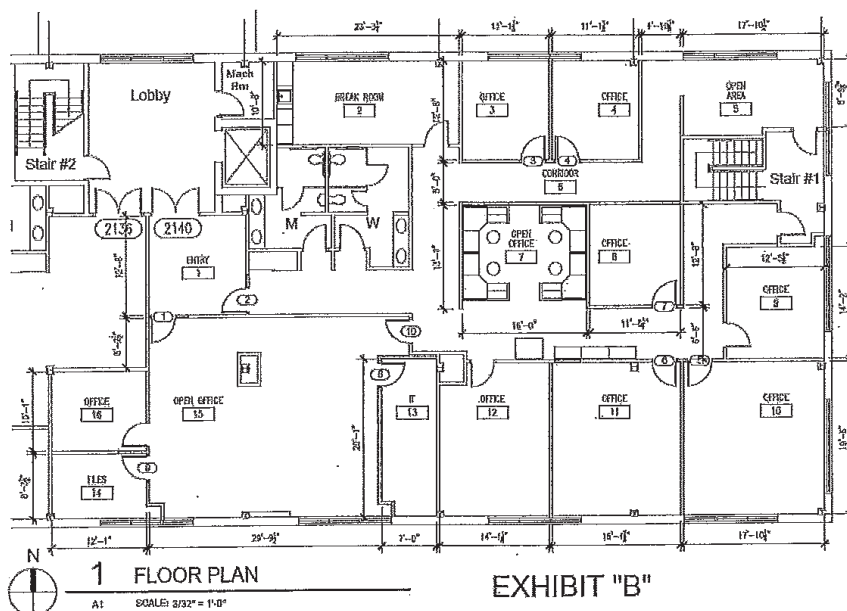




# OFFICE SPACE FOR LEASE

## O'HARE CORPORATE RUN SOUTH I 2134-2140 S WOLF RD DES PLAINES, IL

2140 S WOLF RD (2,633-5,269 SF)



<b>Amarati</b> <small>Architectural &amp; Construction Co., Inc.</small> <small>Architects - General Contractors - Designers</small>	<b>O'Hare Corporate Run South</b> <small>2134-40 S. Wolf Road Des Plaines, Illinois</small>	<small>Date</small> 8-2-16 <small>Revised</small> <small>Drawn</small> L. Kozlowski <small>Scale</small> 3/32" = 1'-0"	<small>O'CRS 2140 WSCE</small> <b>FLOOR PLAN</b>	<b>A1</b>

O'Hare Corporate Run South LLC  
 2140 S. Wolf Road  
 Des Plaines, IL 60018  
 5,269 RSF

### FOR MORE INFORMATION:

RANDY OLCZYK  
 Direct: 847.246.9611  
[randy@chicagolandcommercial.com](mailto:randy@chicagolandcommercial.com)

RAY OKIGAWA  
 Direct: 847.246.9632  
[ray@chicagolandcommercial.com](mailto:ray@chicagolandcommercial.com)



4811 Emerson Ave Suite 112, Palatine, IL