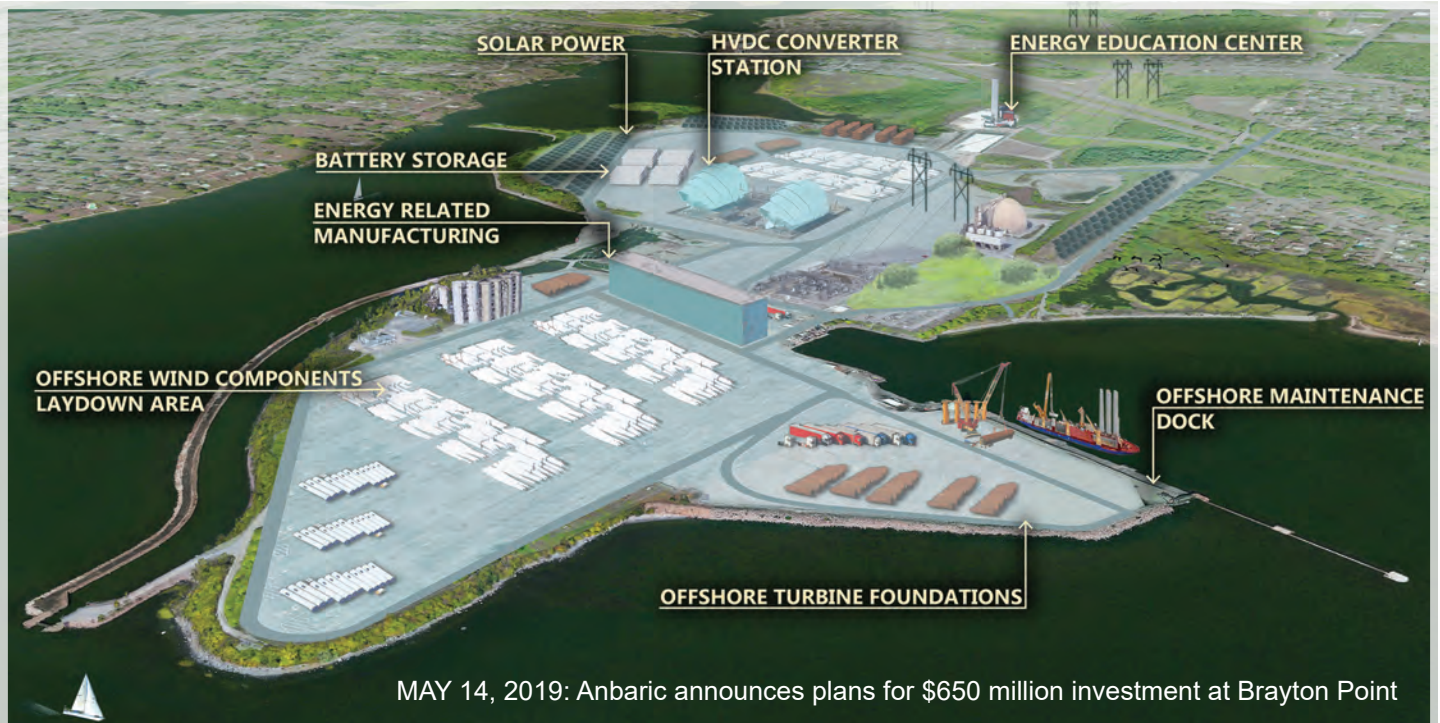


# A WORLD-CLASS LOGISTICS PORT & SUPPORT CENTER BUILT FOR OFFSHORE WIND

BRAYTON POINT COMMERCE CENTER | SOUTHERN MASSACHUSETTS

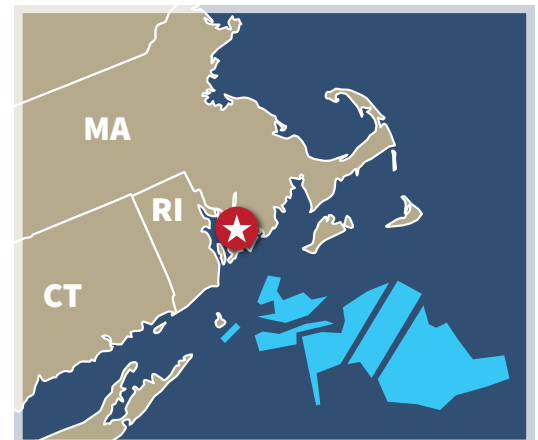


ONCE THE LARGEST COAL-FIRED POWER PLANT IN NEW ENGLAND, BRAYTON POINT IS NOW REPOSITIONED TO SUPPORT OFFSHORE WIND

## PROPERTY FEATURES

- Deep Water Port with 34 ft depth
- HVDC Converter Station
- Dockside heavy-lift cranes
- Port logistics services
- Crane Building (130' x 630) with two 100-ton cranes
- Lay-down yards from 5 acres to 100 areas
- Direct access to I-195 and Hwy 24

## PRIME LOCATION



## BRAYTON POINT COMMERCE CENTER | SOUTH MASSACHUSETTS

### 34-FOOT DEEP WATER PORT

Brayton Point is equipped with a 34' deep water port capable of berthing large trans-Atlantic vessels. Previously used for coal, it will now be used as manufacturing and logistical support for offshore wind and other industries.



### PROXIMITY TO OFFSHORE WIND & MAJOR TRANSPORTATION

Brayton Point is located 37 nautical miles from offshore wind areas, 50 miles from the MassCEC's Wind Technology Testing Center, and has excellent transportation access to I-195 and Route 24.

### RARE OPPORTUNITY FOR INDUSTRIAL DEVELOPMENT

With an unmatched amount of waterfront industrial real estate in Southeast Massachusetts, Brayton Point represents a rare opportunity for development found few other places in New England.



For more information, please visit  
[www.braytonpointcommercecenter.com](http://www.braytonpointcommercecenter.com)

### ABOUT THE PROJECT

The Brayton Point redevelopment project is intended to repurpose a retired 1600-MW coal power plant for the offshore wind energy sector. With 300 acres of industrial waterfront property, a 34-ft deep water port, and public support for energy diversification, Brayton Point is poised to be a world class logistics port and support center for offshore wind.

**Offshore Wind Information**  
1 Brayton Point Road, Somerset, MA  
[www.BraytonPointCommerceCenter.com](http://www.BraytonPointCommerceCenter.com)



306 Acres Site featuring Port, Mfg. Bldgs. & Lay-down areas  
March 2020 drone video of laydown yard, site grading progress, crane bay:  
[https://www.dropbox.com/s/vkrqvlxj2upzw6i/DJI\\_0136.MP4?dl=0](https://www.dropbox.com/s/vkrqvlxj2upzw6i/DJI_0136.MP4?dl=0)



140 Acres of laydown areas @ 1.5% grade

**Offshore Wind Information**  
1 Brayton Point Road, Somerset, MA  
[www.BraytonPointCommerceCenter.com](http://www.BraytonPointCommerceCenter.com)



Protected Narraganset Bay has just 4' tidal movement  
Video of Brayton Point marine terminal with ships in port:  
<https://www.dropbox.com/s/vpi8r958fmmhex5/Brayton%20Point%20ships%20in%20port.mp4?dl=0>



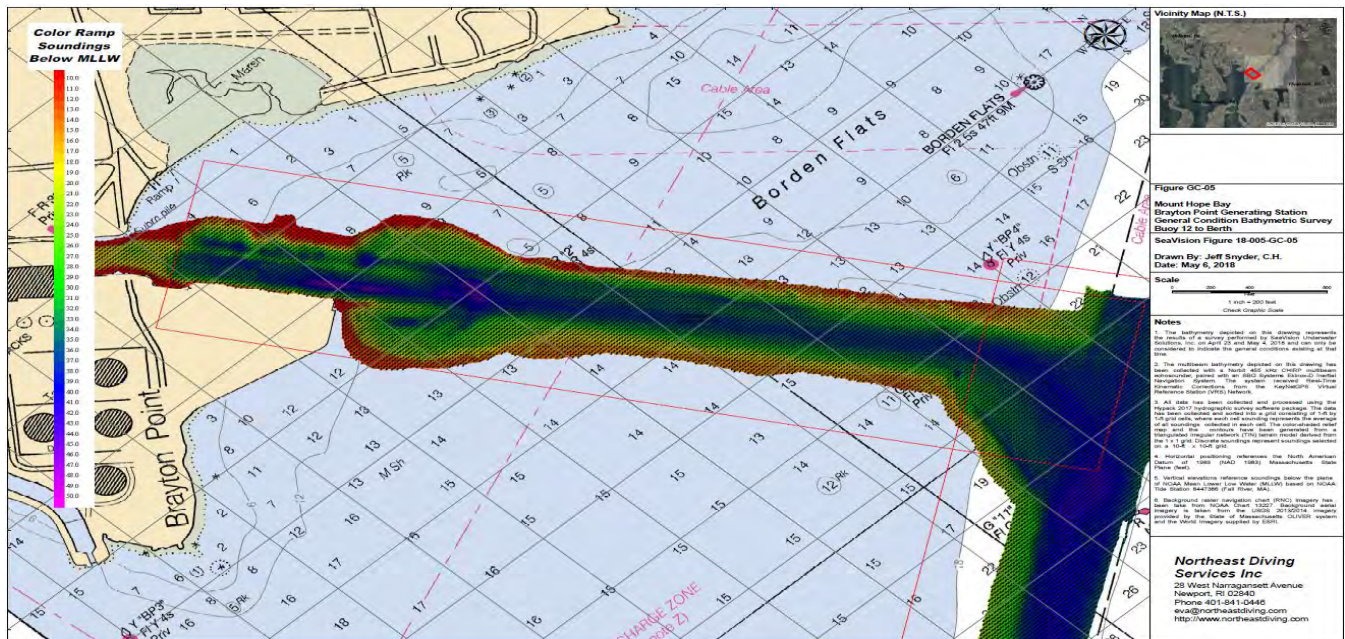
700' quayside with 34' water depth  
Three barge slips to serve RO-RO operations  
20 ships received since MARSEC certification in 2019

# Offshore Wind Information

1 Brayton Point Road, Somerset, MA  
[www.BraytonPointCommerceCenter.com](http://www.BraytonPointCommerceCenter.com)

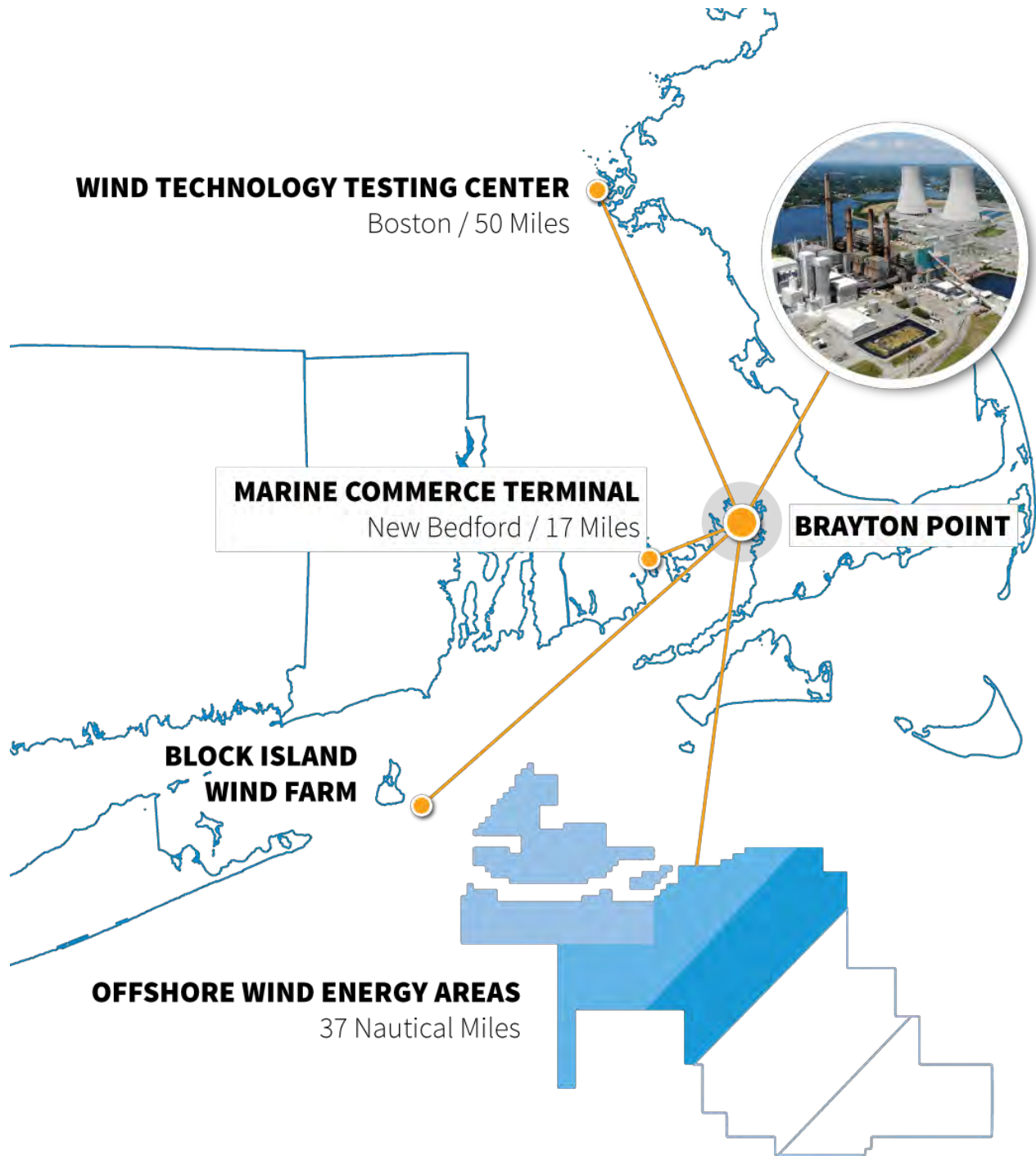


Ideal Mfg. Bldg. (630' x 130') features 100' ceilings & two 100-ton cranes



2018 Bathymetric study confirms 34' quayside mean water depth

**Offshore Wind Information**  
1 Brayton Point Road, Somerset, MA  
[www.BraytonPointCommerceCenter.com](http://www.BraytonPointCommerceCenter.com)



Located on I-195 just 17 miles from New Bedford & 20 miles from ProvPort.  
Stevedoring by Patriot Stevedoring & Heavy Lift by [www.Mammoet.com](http://www.Mammoet.com)