

# South Plaza

5640 NY-12  
Norwich, NY 13815



## PROPERTY DESCRIPTION

South Plaza has been recently renovated and is located in the heart of the retail corridor. Join new tenant Harbor Freight, as well as Label Shopper, Dollar General, and Aaron's. Shadow tenants include Burger King and NBT Bank.

## LOCATION DESCRIPTION

Norwich, NY is the county seat for Chenango County. Home of the corporate offices for Chobani Yogurt, the nation's leading strained yogurt which produces over 2 million cases a week.

## PROPERTY HIGHLIGHTS

- Pylon Sign
- NNN Leases
- Signalized Entrance
- Across the street from a grocery-anchored shopping center



**Brian Donovan**

PRINCIPAL | LICENSED REAL ESTATE BROKER  
brian@donovanres.com | 716.998.2943



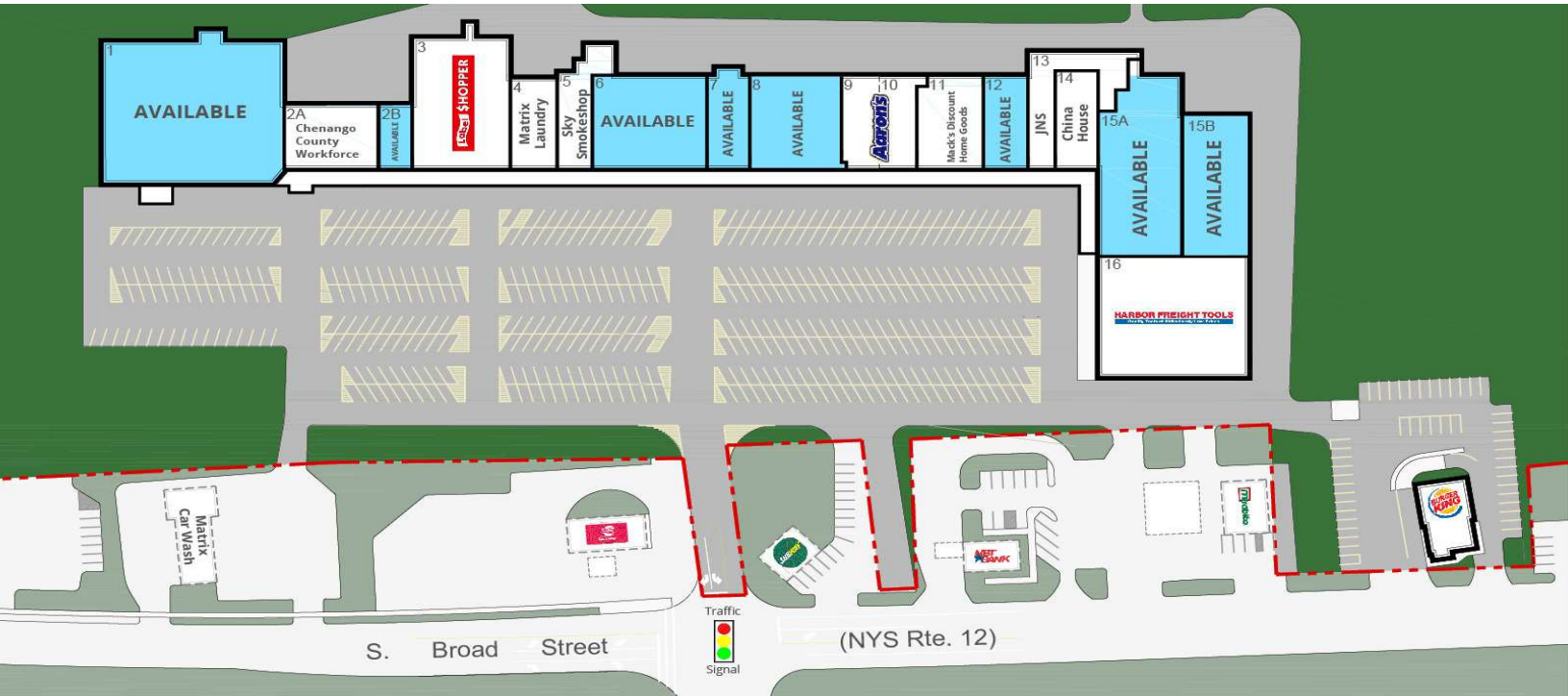
**Ken Brownell**

PRINCIPAL | LICENSED REAL ESTATE BROKER  
kbrownell@vanguardfine.com | 518.424.5094



# South Plaza

5640 NY-12  
Norwich, NY 13815



## LEASE INFORMATION

Lease Type:	NNN	Lease Term:	Negotiable
Total Space:	1,816 - 25,250 SF	Lease Rate:	Negotiable

## AVAILABLE SPACES

SUITE	TENANT	SIZE (SF)	LEASE TYPE	LEASE RATE	DESCRIPTION
Suite 1	Available	25,250 SF	NNN	Negotiable	-
Suite 2B	Available	1,816 SF	NNN	Negotiable	-
Suite 6	Available	14,844 SF	NNN	Negotiable	-
Suite 7	Available	2,656 SF	NNN	Negotiable	-
Suite 8	Available	7,500 SF	NNN	Negotiable	-
Suite 12	Available	4,600 SF	NNN	Negotiable	-
Suite 15A	Available	10,656 SF	NNN	Negotiable	-
Suite 15B	Available	13,137 SF	NNN	Negotiable	-



**Brian Donovan**

PRINCIPAL | LICENSED REAL ESTATE BROKER  
brian@donovanres.com | 716.998.2943



**Ken Brownell**

PRINCIPAL | LICENSED REAL ESTATE BROKER  
kbrownell@vanguardfine.com | 518.424.5094



# South Plaza

5640 NY-12  
Norwich, NY 13815



Harbor Freight is a new tenant to the shopping center



A diverse tenant mix and large parking field brings in a variety of shoppers



**Brian Donovan**

PRINCIPAL | LICENSED REAL ESTATE BROKER  
brian@donovanres.com | 716.998.2943



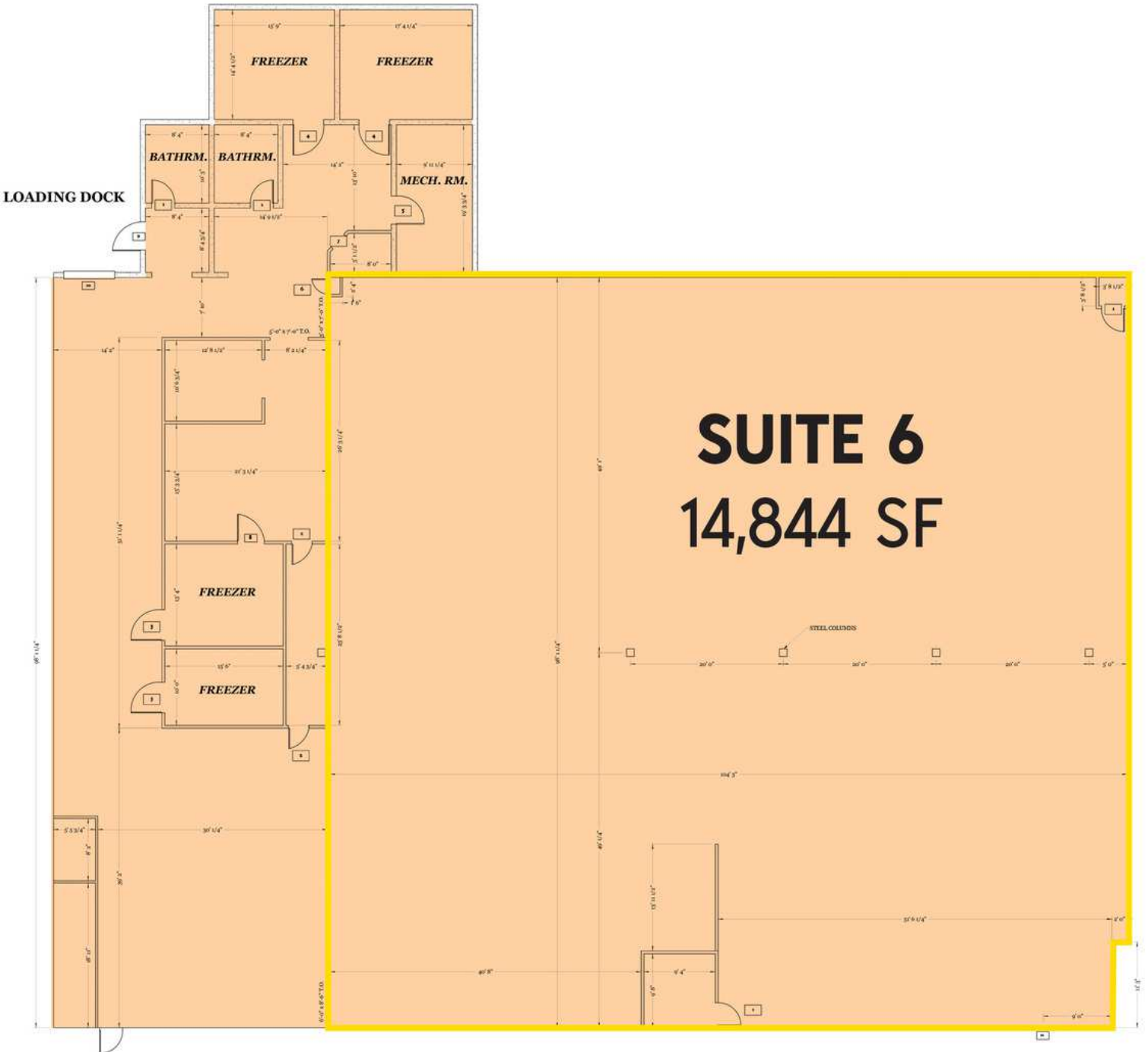
**Ken Brownell**

PRINCIPAL | LICENSED REAL ESTATE BROKER  
kbrownell@vanguardfine.com | 518.424.5094



# South Plaza

5640 NY-12  
Norwich, NY 13815



Suite 6 Floor Plan EXISTING FLOOR PLAN CONDITIONS SCALE: 1/8" = 1'-0"



**Brian Donovan**  
PRINCIPAL | LICENSED REAL ESTATE BROKER  
brian@donovanres.com | 716.998.2943

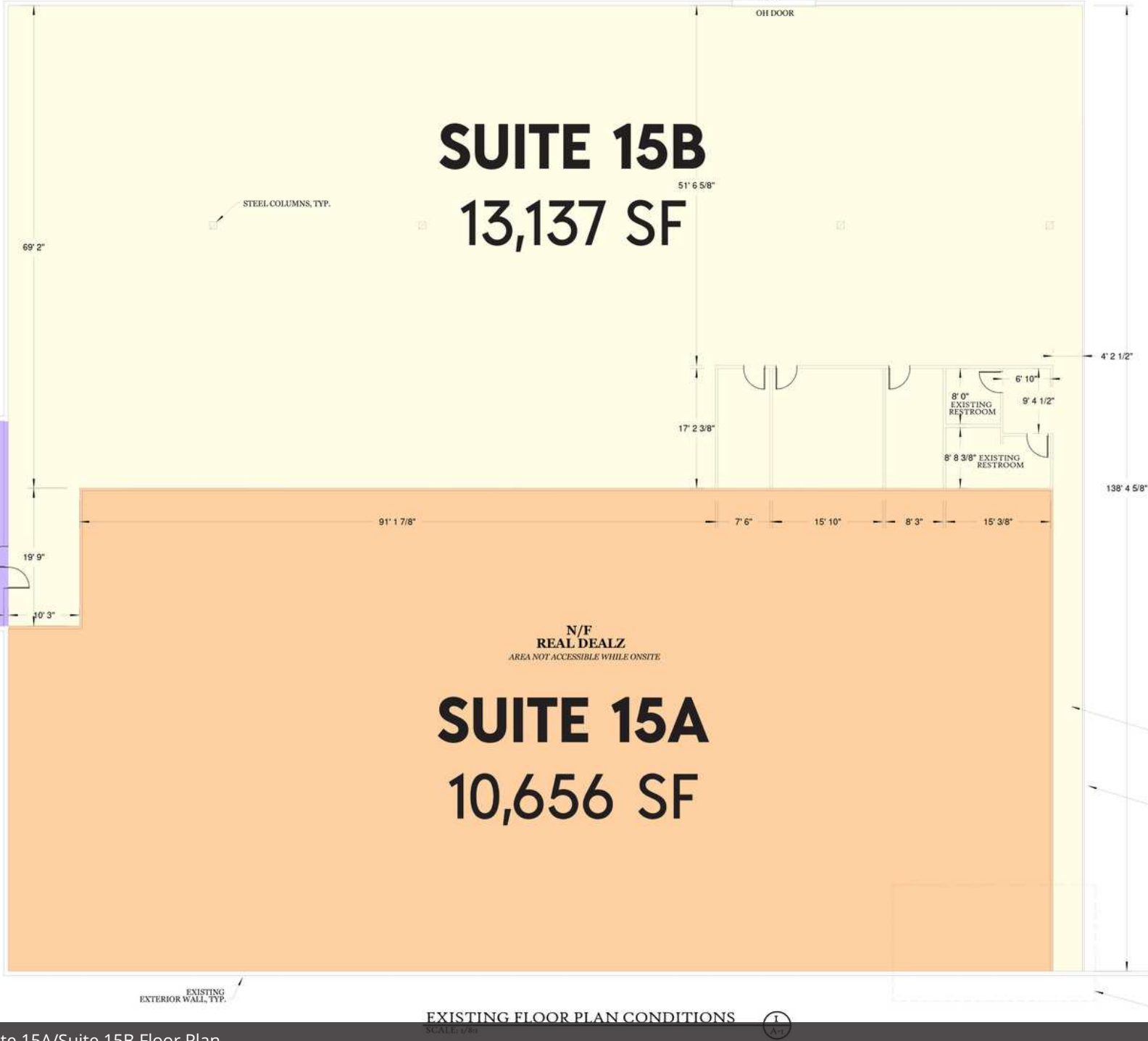


**Ken Brownell**  
PRINCIPAL | LICENSED REAL ESTATE BROKER  
kbrownell@vanguardfine.com | 518.424.5094



# South Plaza

5640 NY-12  
Norwich, NY 13815



Suite 15A/Suite 15B Floor Plan



**Brian Donovan**  
PRINCIPAL | LICENSED REAL ESTATE BROKER  
brian@donovanres.com | 716.998.2943

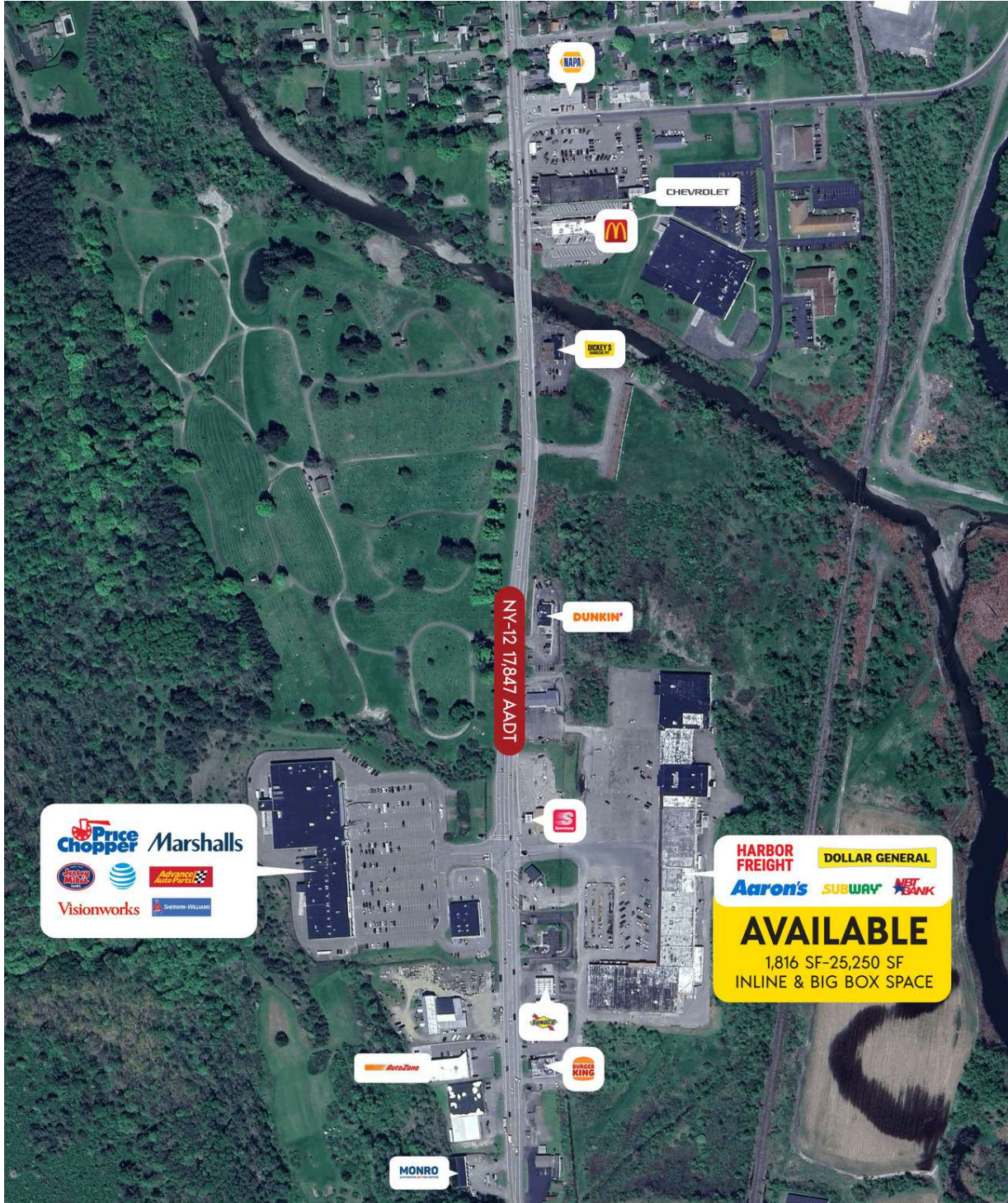


**Ken Brownell**  
PRINCIPAL | LICENSED REAL ESTATE BROKER  
kbrownell@vanguardfine.com | 518.424.5094



# South Plaza

5640 NY-12  
Norwich, NY 13815



**Brian Donovan**

PRINCIPAL | LICENSED REAL ESTATE BROKER  
brian@donovanres.com | 716.998.2943



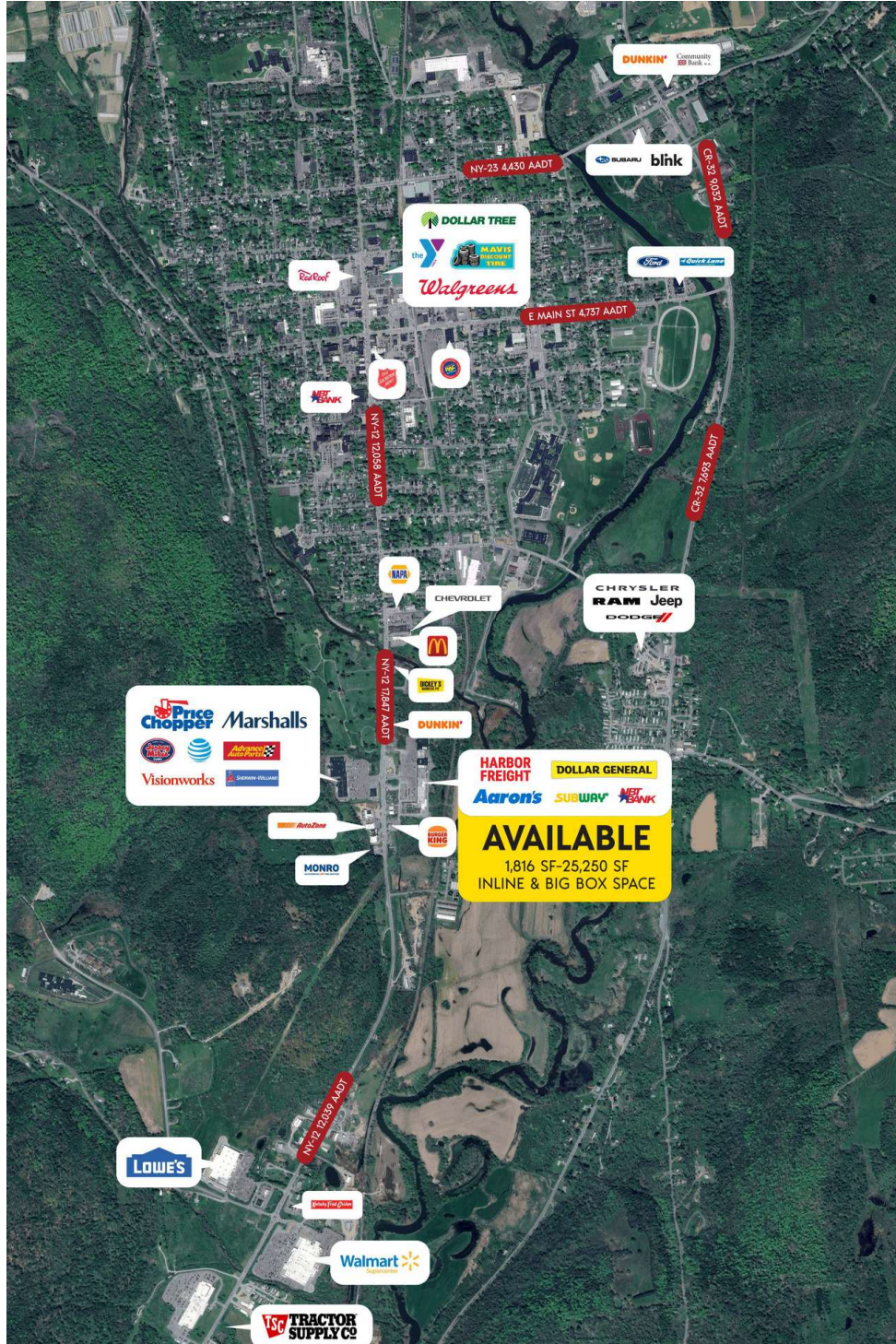
**Ken Brownell**

PRINCIPAL | LICENSED REAL ESTATE BROKER  
kbrownell@vanguardfine.com | 518.424.5094



# South Plaza

5640 NY-12  
Norwich, NY 13815



**Brian Donovan**

PRINCIPAL | LICENSED REAL ESTATE BROKER  
brian@donovanres.com | 716.998.2943



**Ken Brownell**

PRINCIPAL | LICENSED REAL ESTATE BROKER  
kbrownell@vanguardfine.com | 518.424.5094

