



# Northern Parkway

Logistics Hub

up to **±85% reduction** in gross lease tax

## Building 1

12815 West Northern Avenue  
Glendale, Arizona



**READY FOR OCCUPANCY**

**For more information:**

**John Lydon**

Sr. Managing Director  
T: +1 602 282 6326  
M: +1 773 617 6511  
john.lydon@jll.com

**Kelly Royle**

Vice President  
T: +1 602 282 6258  
M: +1 602 814 1583  
kelly.royle@jll.com

**Anthony Lydon, CSCMP**

Exec. Managing Director  
T: +1 602 282 6268  
M: +1 602 469 1843  
aj.lydon@jll.com

**Nicole Marshall**

Associate  
T: +1 602 282 6300  
M: +1 951 723 0943  
nicole.marshall@jll.com



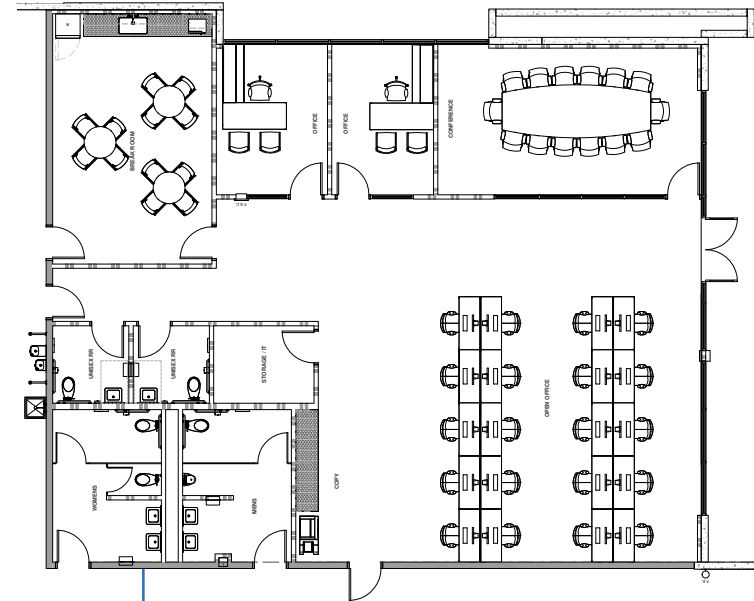
Jones Lang LaSalle Americas, Inc. | AZ License #CO508577000

# Building Specifications

## Building 1

<b>Building SF</b>	52,057 SF
<b>Building Dimensions</b>	364' x 110'
<b>Spec Suite SF</b>	3,300 SF
<b>Auto Parking</b>	81 (1.55/1,000 SF)
<b>Trailer Court Depth</b>	135'
<b>Dock Doors</b>	8 (9' x 10')
<b>Grade Level Doors</b>	2 (12' x 14')
<b>Load Capacity</b>	(2) 40k lb capacity mechanical pit levelers
<b>Slab Thickness</b>	7" reinforced on ABC Fill
<b>Column Spacing</b>	52' x 50'
<b>Speed Bay Dimensions</b>	60' x 52'
<b>Clear Height</b>	32'
<b>Green Energy</b>	Pursuing LEED certification
<b>Electrical Power</b>	3,000 amps
<b>Sprinklers</b>	ESFR, K17
<b>Warehouse Cooling</b>	HVAC
<b>Lighting</b>	LED warehouse lighting to deliver 30 foot candles average at 36" AFF, fixtures to have motion sensors and 15' whips
<b>Taxes</b>	Tenant pays 0.5% gross lease tax, Maricopa County

# Spec Suite Plan



## Building Site Plan

