

30 Acres Commercial Land | Farmersville, CA

Property For Sale

1005 N Demaree Street
Visalia, California 93291
O | 559.754.3020
F | 559.429.4016
www.mdgre.com

GRAHAM | & ASSOCIATES

Jim Abercrombie
Lic# 01917959
www.mdgre.com

to learn more, visit: www.mdgre.com

PROPERTY DETAILS

Address: West Visalia Road | Farmersville, CA

APN: 130-040-020

Land Available: 30.14 +/- Acres

Zoning: Commercial

Sales Price: \$2,409,600.00

Additional Comments:

30 acres of previously entitled land with tentative map approved by the City of Farmersville. This land is ideal for residential development, with frontage on West Visalia Road. Located between the Farmersville Police Department and St. Anthony's Catholic Church. Please call for further details.



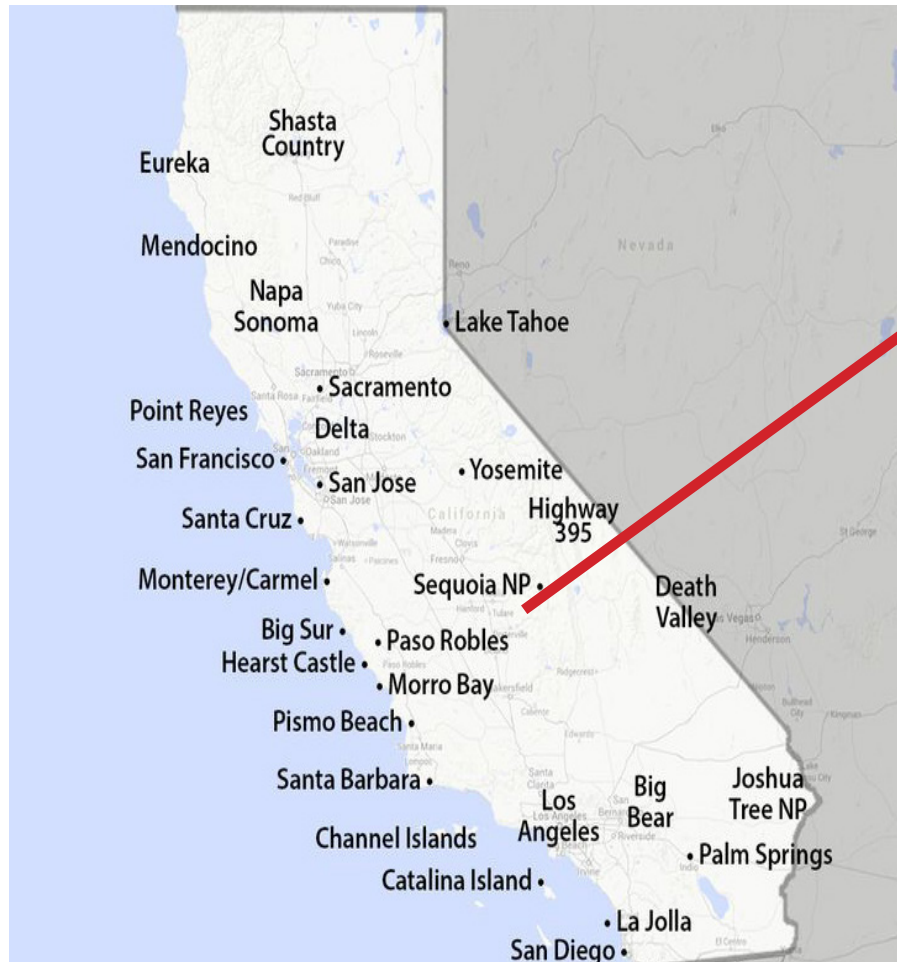
Contact Broker:
Jim Abercrombie
Lic# 01917959

to learn more, visit: www.mdgre.com

1005 N Demaree Street
Visalia, California 93291
O | 559.754.3020

PLEASE NOTE: ALL INFORMATION AND REPRESENTATION MADE HEREIN, WHILE NOT GUARANTEED, HAVE BEEN SECURED FROM SOURCES WE BELIEVE TO BE RELIABLE, HOWEVER, THEY ARE NOT WARRANTED BY MATT GRAHAM & ASSOCIATES AND ARE SUBJECT TO CHANGE WITHOUT NOTICE.

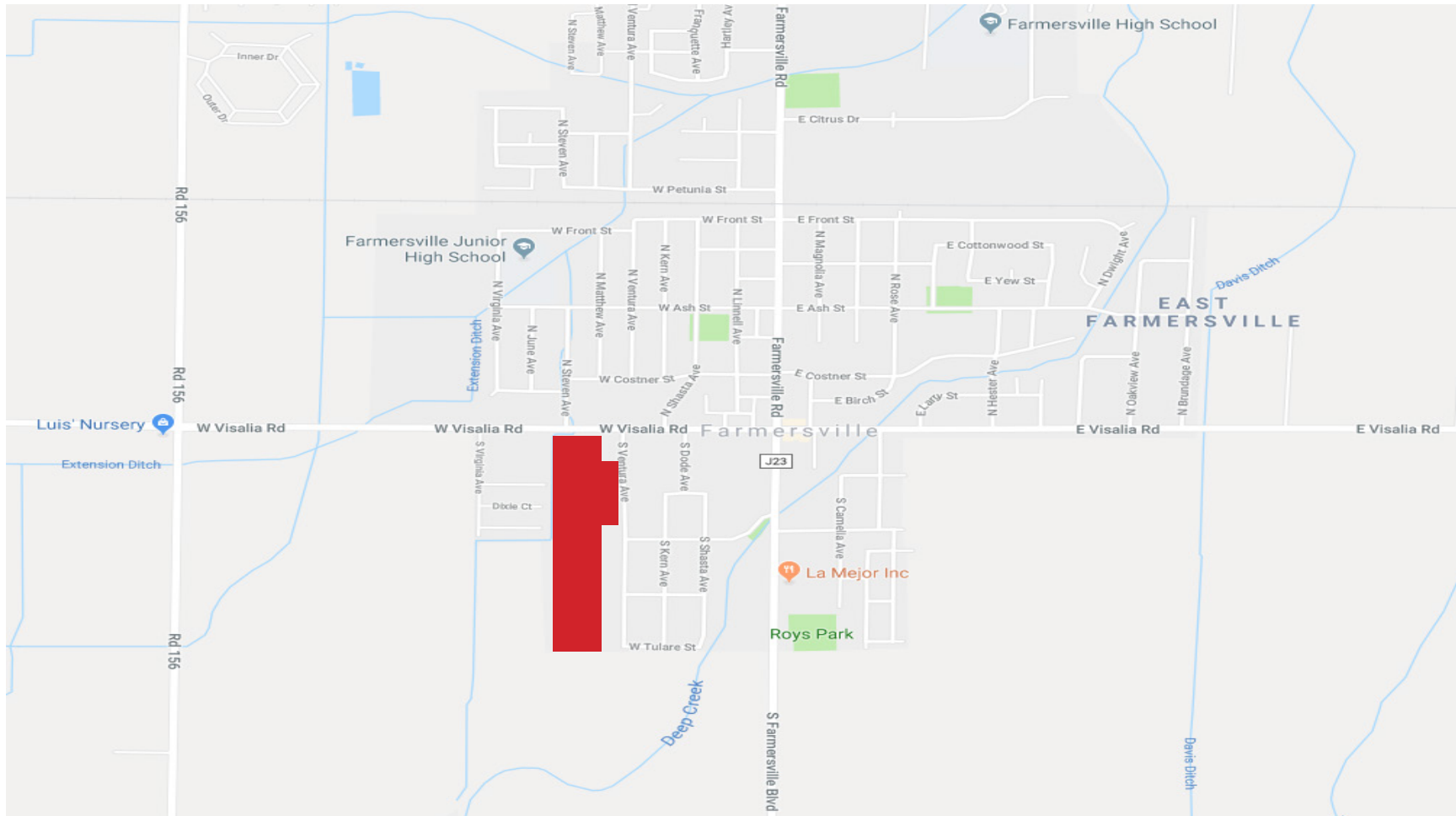
WOODLAKE



Farmersville is a city in the San Joaquin Valley in Tulare County, California, United States, just to the east of Visalia, California. The population was 10,588 at the 2010 census, up from 8,737 at the 2000 census.

- DISTANCE TO MAJOR CITIES
- Fresno -- 60 miles
 - Visalia -- 15 miles
 - Bakersfield -- 65 miles
 - Yosemite National Park -- 115 miles
 - Central Coast -- 150 miles
 - San Jose -- 175 miles
 - Sacramento -- 200 miles
 - Los Angeles -- 195 miles
 - San Francisco -- 240 miles

LOCATION MAP



PLEASE NOTE: ALL INFORMATION AND REPRESENTATION MADE HEREIN, WHILE NOT GUARANTEED, HAVE BEEN SECURED FROM SOURCES WE BELIEVE TO BE RELIABLE, HOWEVER, THEY ARE NOT WARRANTED BY MATT GRAHAM & ASSOCIATES AND ARE SUBJECT TO CHANGE WITHOUT NOTICE.

PROPERTY LAYOUT



PLEASE NOTE: ALL INFORMATION AND REPRESENTATION MADE HEREIN, WHILE NOT GUARANTEED, HAVE BEEN SECURED FROM SOURCES WE BELIEVE TO BE RELIABLE, HOWEVER, THEY ARE NOT WARRANTED BY MATT GRAHAM & ASSOCIATES AND ARE SUBJECT TO CHANGE WITHOUT NOTICE.