

PRIME SANTA MONICA OFFICE FOR LEASE/SALE | 3,800 SF

1412

14th St

SANTA MONICA, CA

INVESTMENT OR OWNER USER OPPORTUNITY



ANDREW JENNISON

Vice Chairman
t 310-407-6518
andrew.jennison@nmrk.com
CA RE Lic. #01275687

DANIEL PICKART

Senior Managing Director
t 310-407-6515
daniel.pickart@nmrk.com
CA RE Lic. #01914551

RENEE NELSON

Transaction Manager
t 310-407-6517
renee.nelson@nmrk.com
CA RE Lic. #01991249

1412

14th St

SANTA MONICA, CA



3,800 SF

SPACE AVAILABLE



\$4.50/SF NNN

LEASE RATE

\$4,300,000

(\$1,131.58 Price/SF)

PURCHASE PRICE



Negotiable

TERM



May 2024

AVAILABILITY



8 Spaces On-site

(Secure access)

PARKING



11'

CEILING HEIGHTS

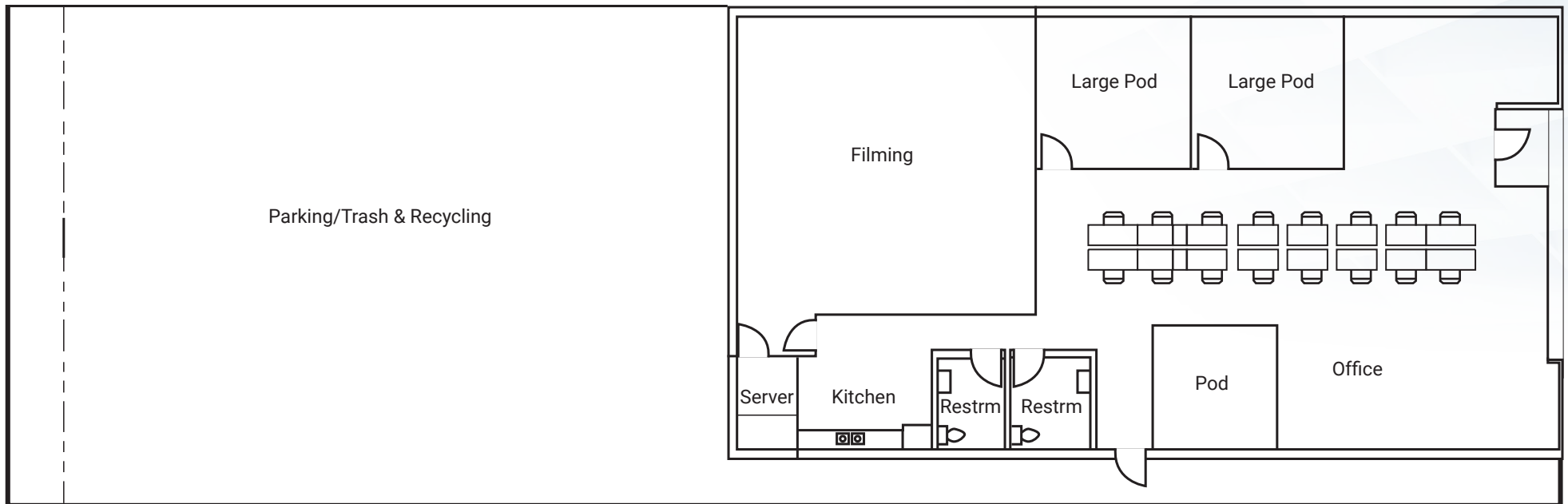
PROPERTY INFO & HIGHLIGHTS



1412
14th St
SANTA MONICA, CA

FLOORPLAN

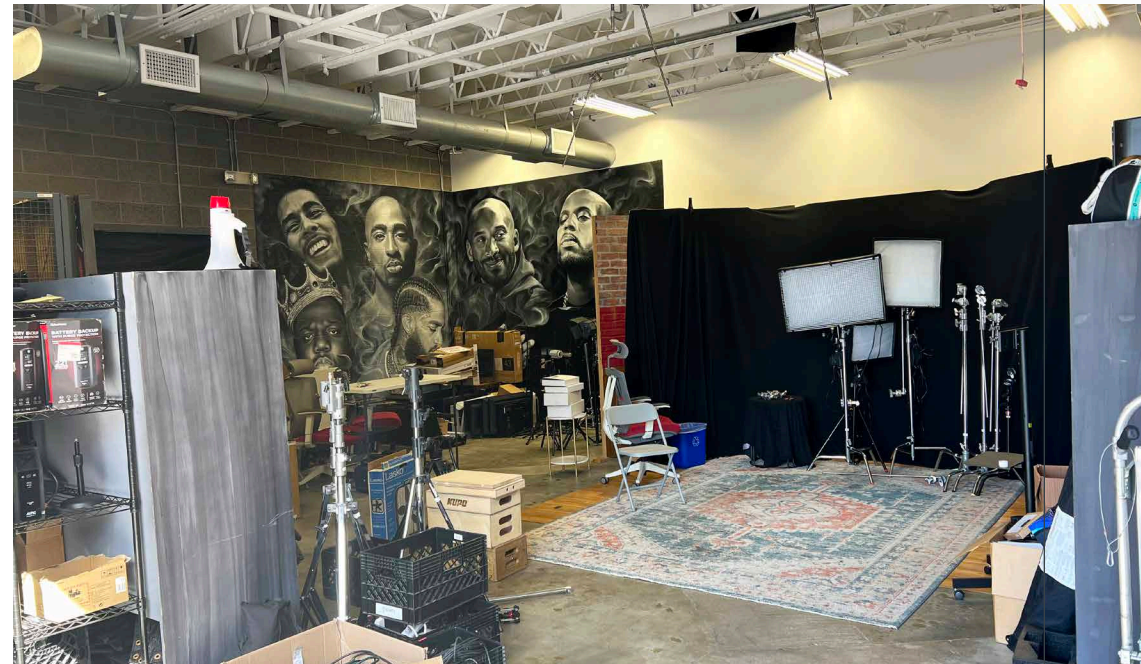
1ST FLOOR | 3,800 SF



*Floor Plan Not to Scale

1412
14th St
SANTA MONICA, CA

SUITE IMAGES



PRIME SANTA MONICA OFFICE FOR LEASE/SALE | 3,800 SF

1412

14th St

SANTA MONICA, CA

MALKA

1412

Procuring broker shall only be entitled to a commission, calculated in accordance with the rates approved by our principal only if such procuring broker executes a brokerage agreement acceptable to us and our principal and the conditions as set forth in the brokerage agreement are fully and unconditionally satisfied. Although all information furnished regarding property for sale, rental, or financing is from sources deemed reliable, such information has not been verified and no express representation is made nor is any to be implied as to the accuracy thereof and it is submitted subject to errors, omissions, change of price, rental or other conditions, prior sale, lease or financing, or withdrawal without notice and to any special conditions imposed by our principal.

NEWMARK

Newmark \ 1875 Century Park E, Suite 1380 \ Los Angeles, CA 90067 \ Corporate License #01355491

ANDREW JENNISON

Vice Chairman

t 310-407-6518

andrewjennison@nrmk.com

CA RE Lic. #01275687

DANIEL PICKART

Senior Managing Director

t 310-407-6515

daniel.pickart@nrmk.com

CA RE Lic. #01914551

RENEE NELSON

Transaction Manager

t 310-407-6517

renee.nelson@nrmk.com

CA RE Lic. #01991249