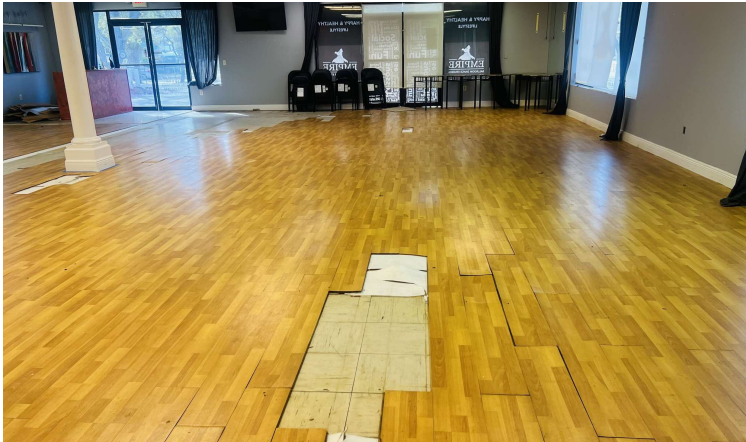




OPEN FLOOR PLAN AVAILABLE IN THE ROSEMARY DISTRICT
1370 Blvd Of The Arts, Sarasota, FL 34236



PROPERTY OVERVIEW

Situated in the vibrant Rosemary District, 1370 Blvd of the Arts presents an opportunity with 2000-4000 square feet of versatile space, ideal for your upcoming office or retail endeavor. With its open floor plan, it provides a customizable environment to reflect your vision along with the benefit of ample parking and swift access to downtown Sarasota's amenities.

PROPERTY SUMMARY

Lease Rate:	\$32.00 SF/yr (MG)
Available SF:	4,000 SF
Lot Size:	0.37 Acres
Year Built:	1986
Building Size:	4,000
Zoning:	DTE



Presented By:

JAG GREWAL, CCIM, SIOR
941.356.5042
jag@ian-black.com

HEIDI HABER
941.323.0557
heidi@ian-black.com

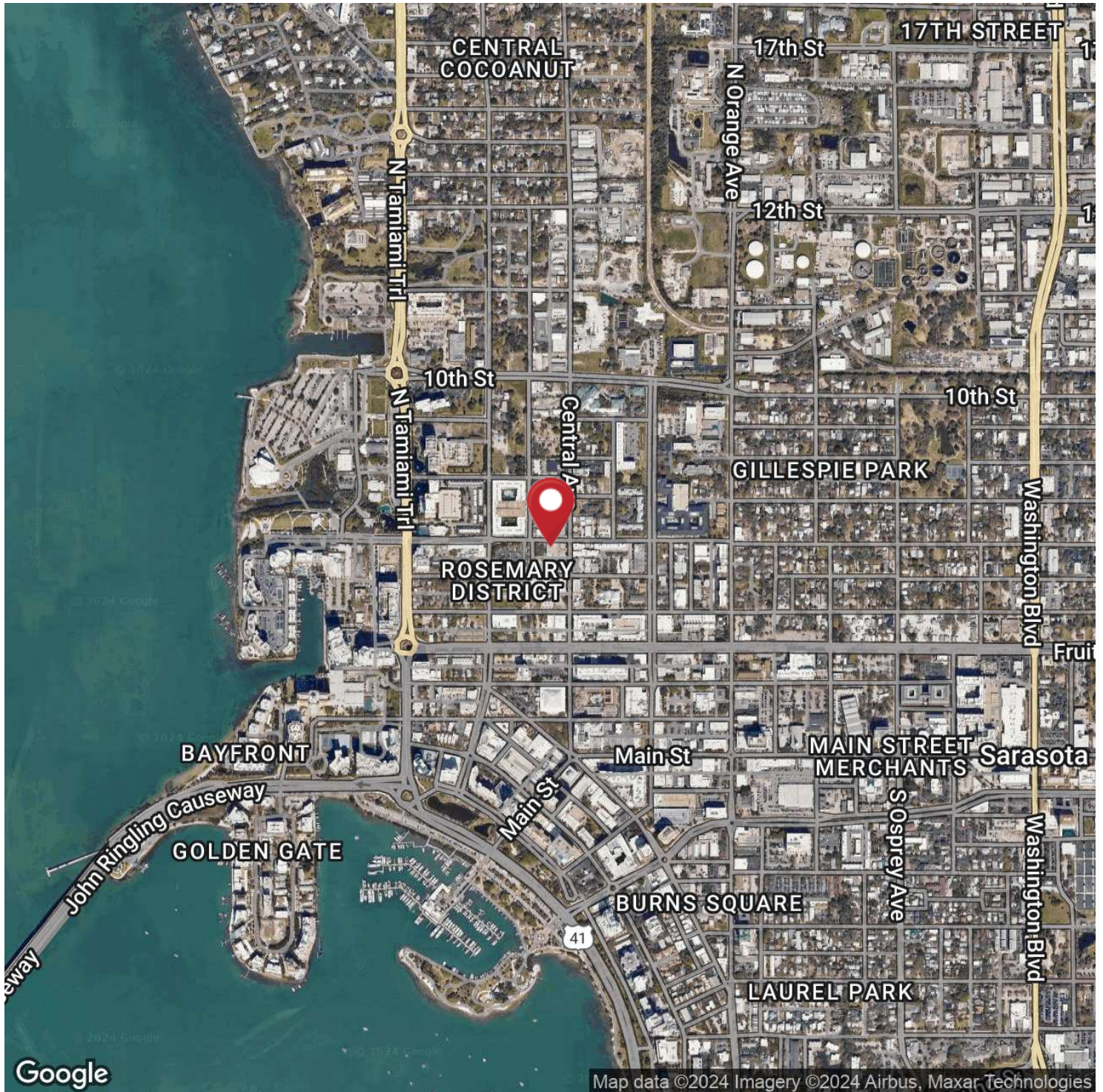
IANBLACK
REAL ESTATE
THE PLACE FOR SPACE

Information deemed reliable but not guaranteed. Prices subject to change without notice.

Ian Black Real Estate | 1 South School Avenue | Suite 600 | Sarasota, FL 34237 | ian-black.com

Open Floor Plan Available In The Rosemary District

1370 Blvd Of The Arts, Sarasota, FL 34236



Presented By:

JAG GREWAL, CCIM, SIOR
941.356.5042
jag@ian-black.com

HEIDI HABER
941.323.0557
heidi@ian-black.com

IANBLACK
REALESTATE

THE PLACE FOR SPACE

Information deemed reliable but not guaranteed. Prices subject to change without notice.

Ian Black Real Estate | 1 South School Avenue | Suite 600 | Sarasota, FL 34237 | ian-black.com