

FOR LEASE

8005 W. 110th Street

Overland Park, KS

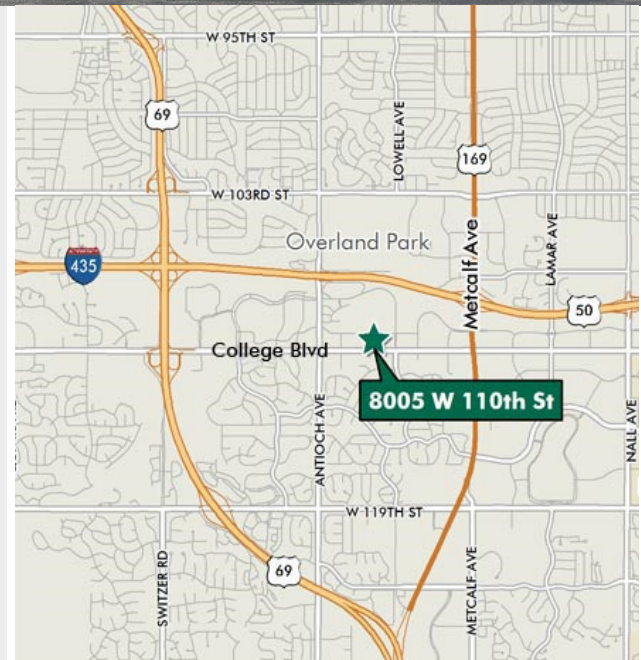


**1,221 - 7,901 S.F. (divisible) Office Space Available**  
**Lease Price: \$18.50 P.S.F. to \$20.50 P.S.F.**

#### Property Highlights

- ◆ Excellent Location with outstanding access and visibility
- ◆ Abundant Parking
- ◆ Attractive Finishes
- ◆ Recently remodeled common areas
- ◆ High speed internet access
- ◆ Near Shopping, restaurants, banks and hotels

<http://www.8005w110.com>



For more information, contact:

**Max Vickers**  
**Broker**  
913-648-1188  
maxvickers@tiehengroup.com

**Jim Tiehen, CCIM**  
**Broker**  
913-648-1188  
jim@tiehengroup.com

**THE Tiehen Group**  
**INC.**  
Property Management • Leasing & Brokerage Services  
3401 College Blvd, Suite 250, Leawood, KS  
[www.tiehengroup.com](http://www.tiehengroup.com)

FOR LEASE

8005 W. 110th Street

Overland Park, KS

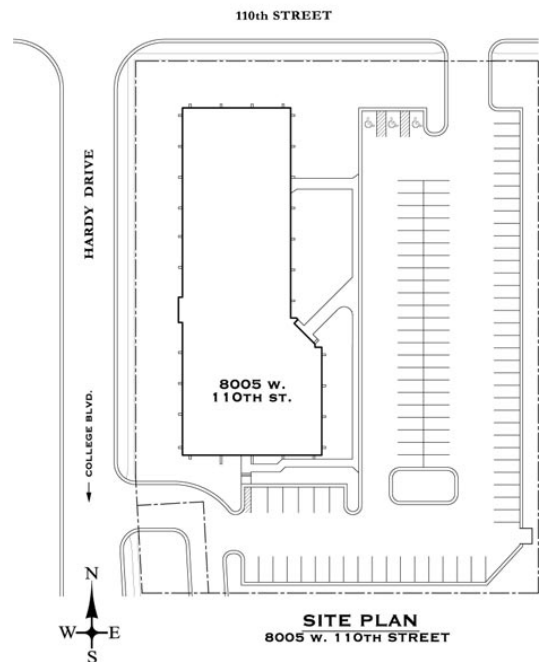


8005 W. 110th Street is an extremely well maintained all brick structure sitting on the corner of 110th Street and Hardy Drive, immediately north along the prestigious College Boulevard corridor. The property has been recently remodeled and updated. It is an excellent leasing opportunity in the heart of one of Johnson County's most prestigious business locations.

For more information, contact:

**Max Vickers**  
Broker  
913-648-1188  
maxvickers@tiehengroup.com

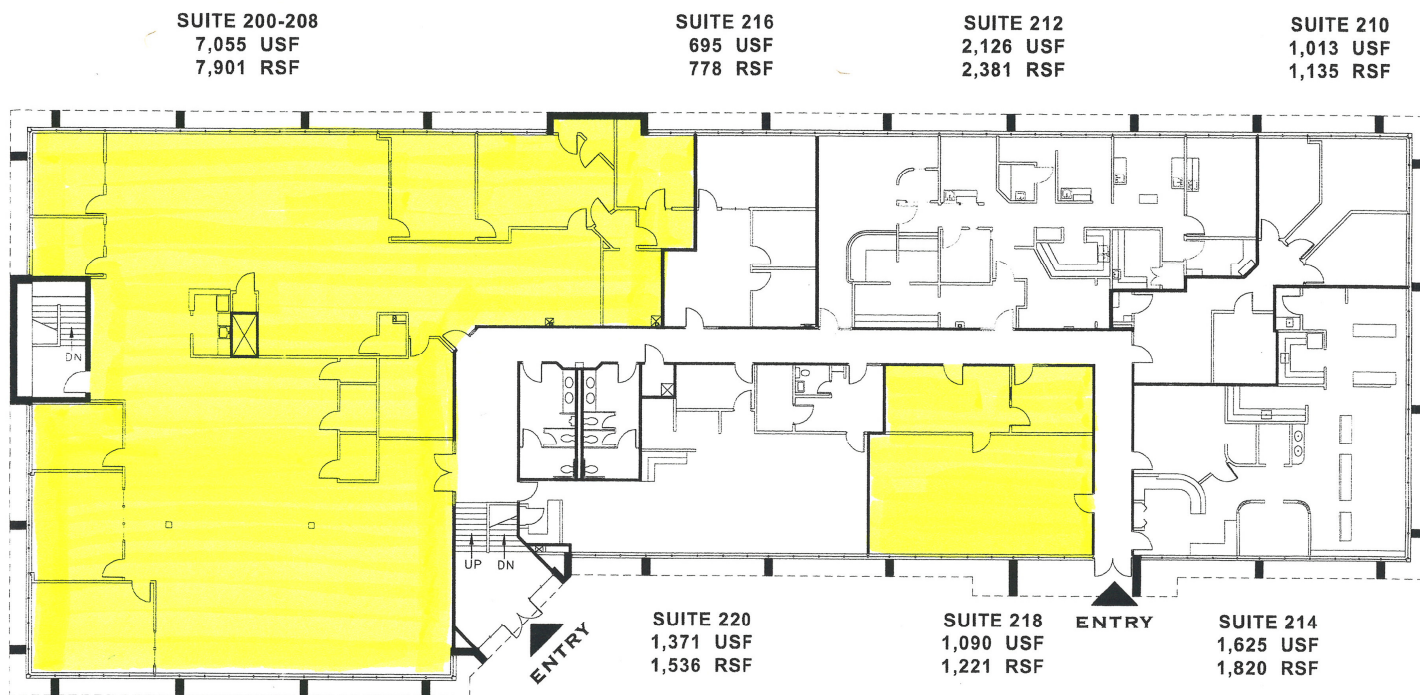
**Jim Tiehen, CCIM**  
Broker  
913-648-1188  
jim@tiehengroup.com



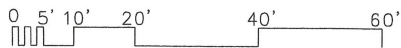
FOR LEASE

8005 W. 110th Street

Overland Park, KS



**SECOND FLOOR**



**8005 W. 110TH STREET**  
OVERLAND PARK, KANSAS