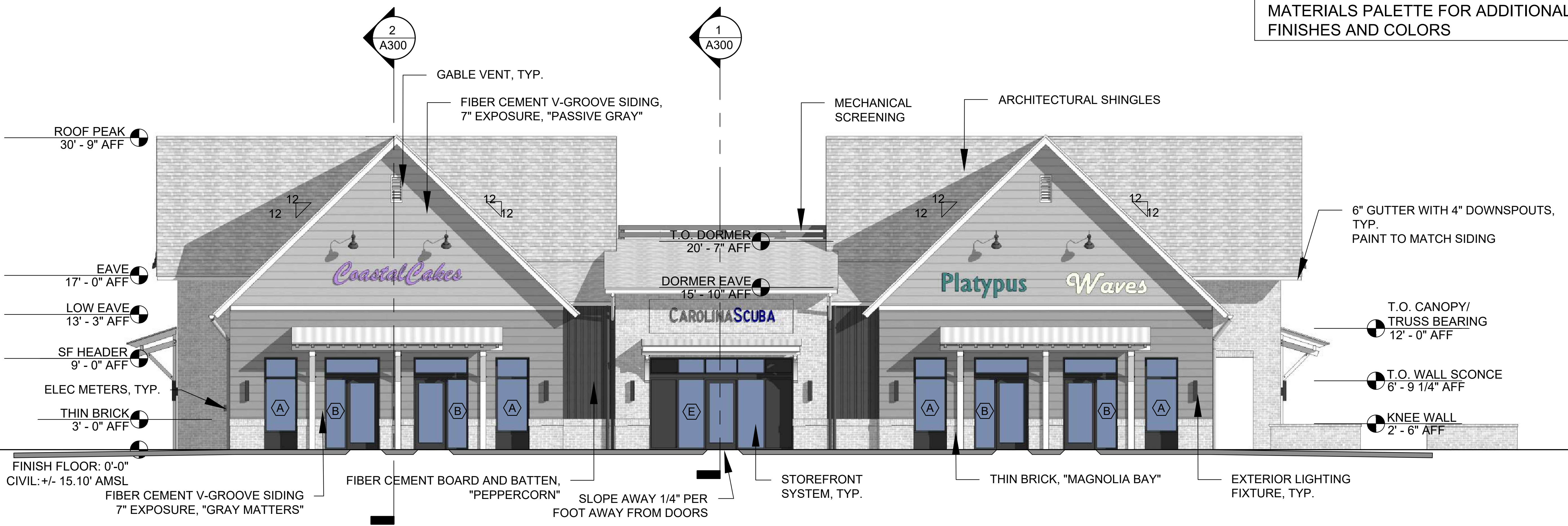


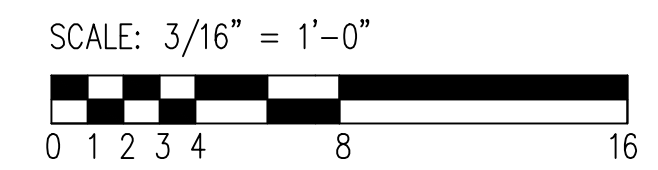
1 NORTH ELEVATION (FRONT) FACING PARKING LOT AND BLDG "C"
SCALE: 3/16" = 1'-0"

NOTE: SIGNAGE BY OTHERS

SEE TOMP FINAL DRB APPROVED EXTERIOR MATERIALS PALETTE FOR ADDITIONAL INFO ON FINISHES AND COLORS



2 SOUTH ELEVATION FACING HWY 17
SCALE: 3/16" = 1'-0"



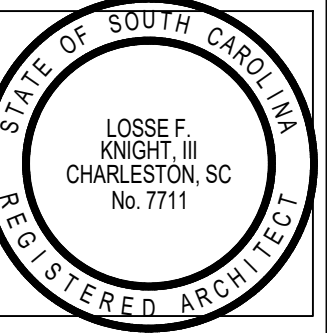
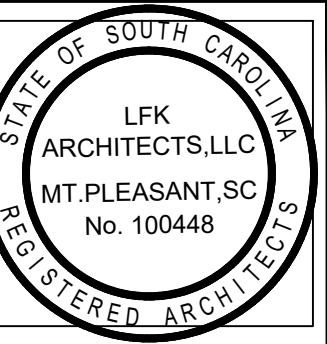
REVISION NOTES:

HIGHWAY 17 RETAIL VILLAGE BUILDING "A"
TMS#s 598-00-00-008, 598-00-00-010, 598-00-00-011
MOUNT PLEASANT, SC
NORTH AND SOUTH BUILDING ELEVATIONS

SHEET NUMBER & TITLE:

A200

PERMIT/ CONSTRUCTION DRAWINGS
02.27.2026



Land Planning + Feasibility Studies
Commercial + Residential Design
www.lfkarchitect.com
LFK ARCHITECTS, LLC
886 JOHNNIE DODDS BLVD
SUITE 200
MOUNT PLEASANT, SC 29464
LOSSE F. KNIGHT III, AIA
losse@lfkarchitect.com
phone: 843-330-8940

JOB NUMBER:	000
DRAWN:	AJR
CHECKED:	LFK

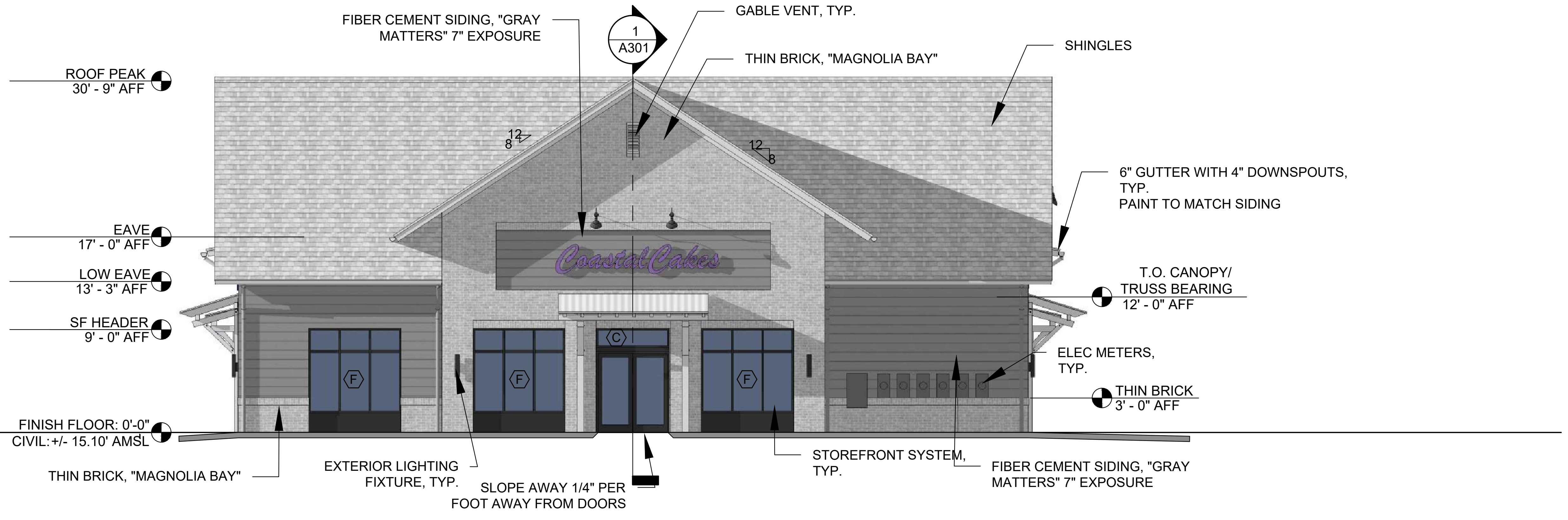
REVISION NOTES:

HIGHWAY 17 RETAIL VILLAGE BUILDING "A"
TMS#s 598-00-00-008, 598-00-00-010, 598-00-00-011
MOUNT PLEASANT, SC
EAST & WEST BUILDING ELEVATIONS

SHEET NUMBER & TITLE:

A201

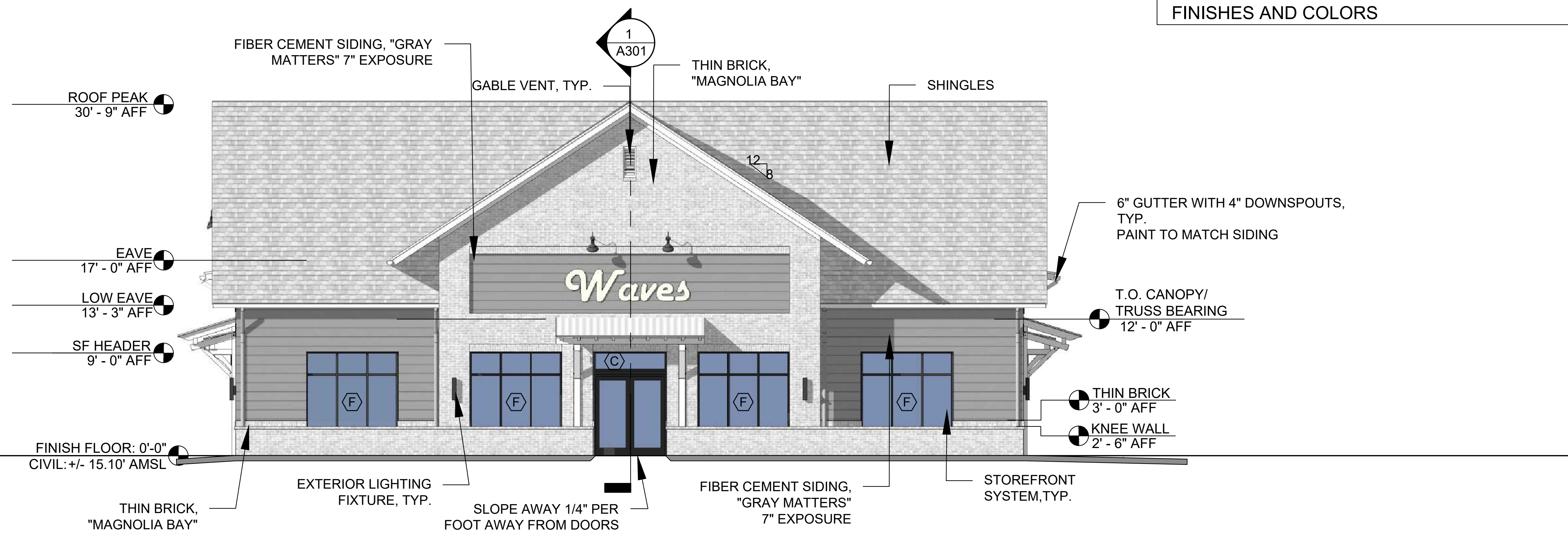
PERMIT/ CONSTRUCTION DRAWINGS
02.27.2026



1 WEST ELEVATION- SIDE FACING PATIO AND PARKING LOT
SCALE: 3/16" = 1'-0"

NOTE: SIGNAGE BY OTHERS

SEE TOMP FINAL DRB APPROVED EXTERIOR MATERIALS PALETTE FOR ADDITIONAL INFO ON FINISHES AND COLORS



2 EAST ELEVATION (SIDE) FACING ENTRY DRIVE AND BLDG "B"
SCALE: 3/16" = 1'-0"

