

FOR LEASE

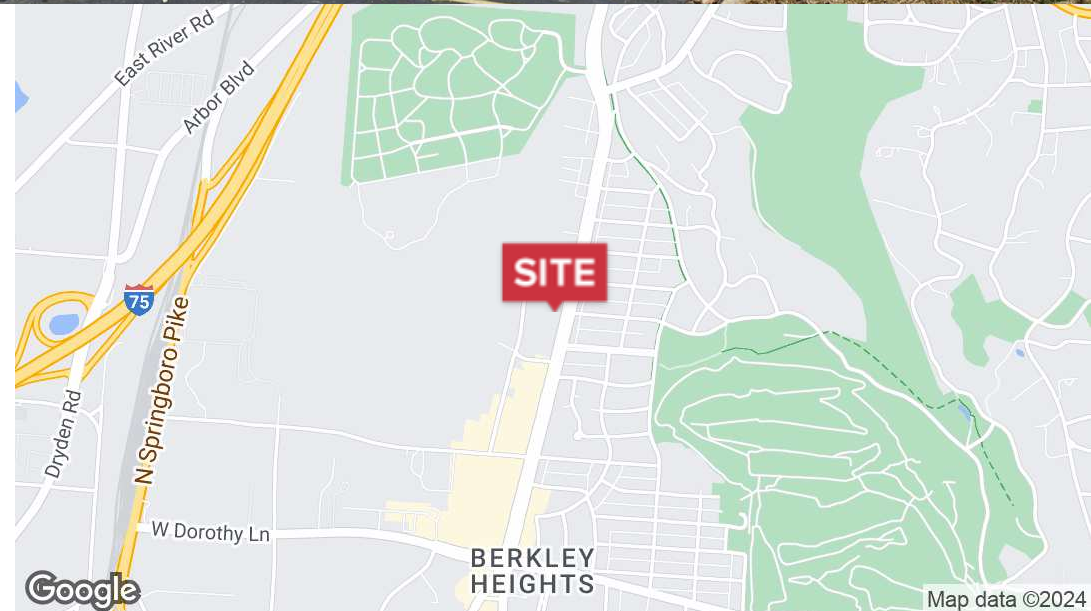
2555 S Dixie Dr Dayton, OH 45409



NAI Bergman

Office | 120 - 4,315 SF

- Suite 260 - 4,315 SF Space
- \$12.50/SF FS
- 2 private Restrooms
- Suite 201 - 957 SF
- \$1000/M
- Suite 230 - 736 SF
- \$800/M
- Suites 284/286 - 120 SF each
- \$250/M each (They are adjacent)



✉ **Scott Kaster**
+1 937 673 4366
scott@bergman-group.com

FOR LEASE

2555 S Dixie Dr Dayton, OH 45409



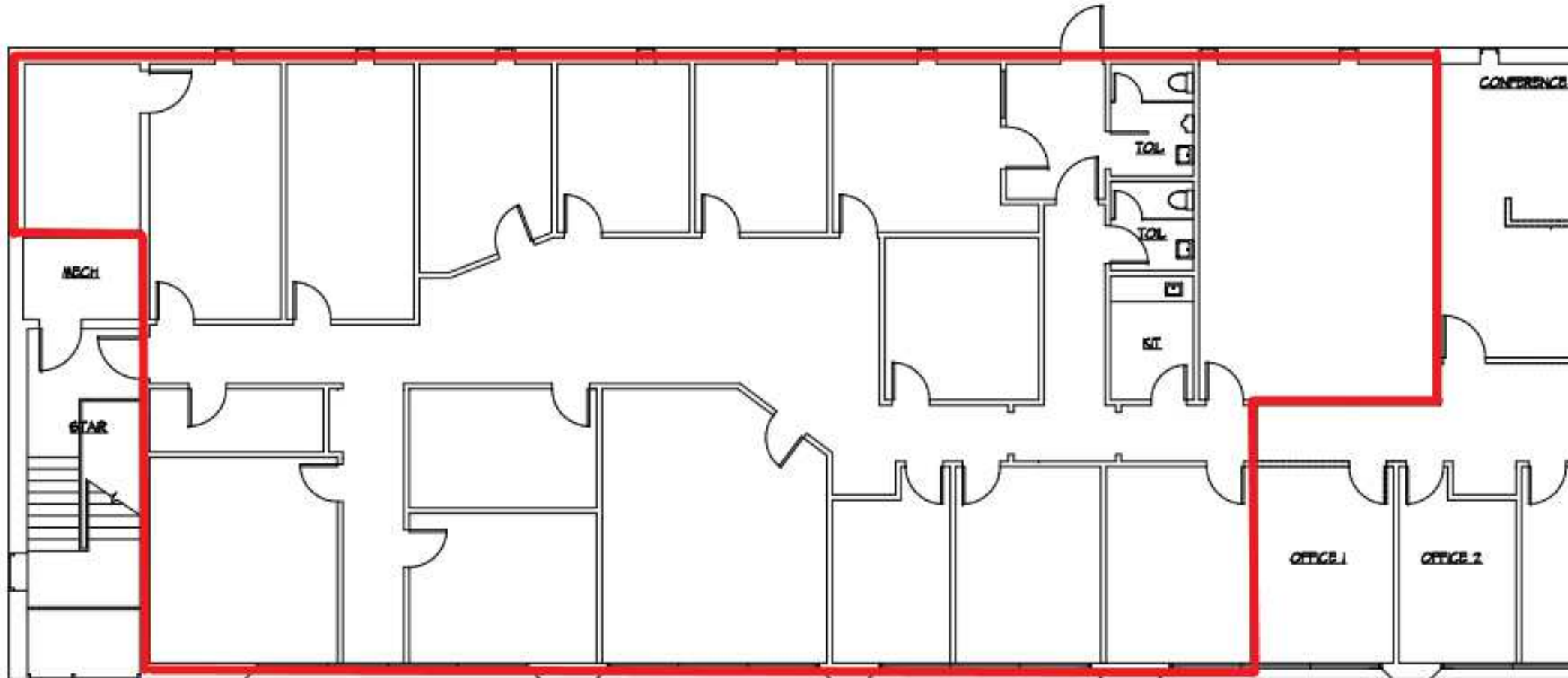
No Warranty Or Representation, Express Or Implied, Is Made As To The Accuracy Of The Information Contained Herein, And The Same Is Submitted Subject To Errors, Omissions, Change Of Price, Rental Or Other Conditions, Prior Sale, Lease Or Financing, Or Withdrawal Without Notice, And Of Any Special Listing Conditions Imposed By Our Principals No Warranties Or Representations Are Made As To The Condition Of The Property Or Any Hazards Contained Therein Are Any To Be Implied.

✉ **Scott Kaster**
+1 937 673 4366
scott@bergman-group.com

NAI Bergman

FOR LEASE

2555 S Dixie Dr Dayton, OH 45409



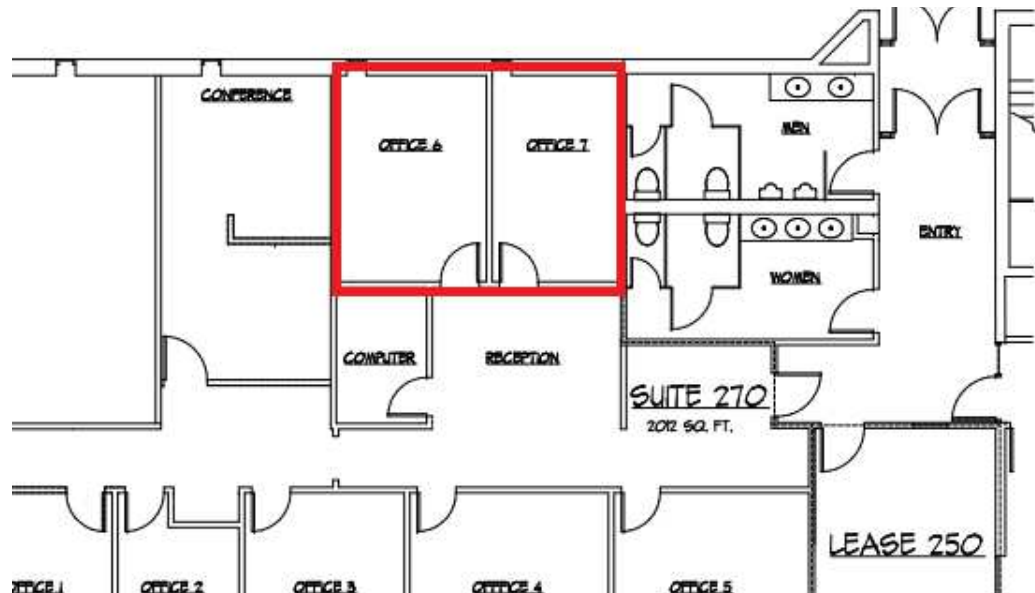
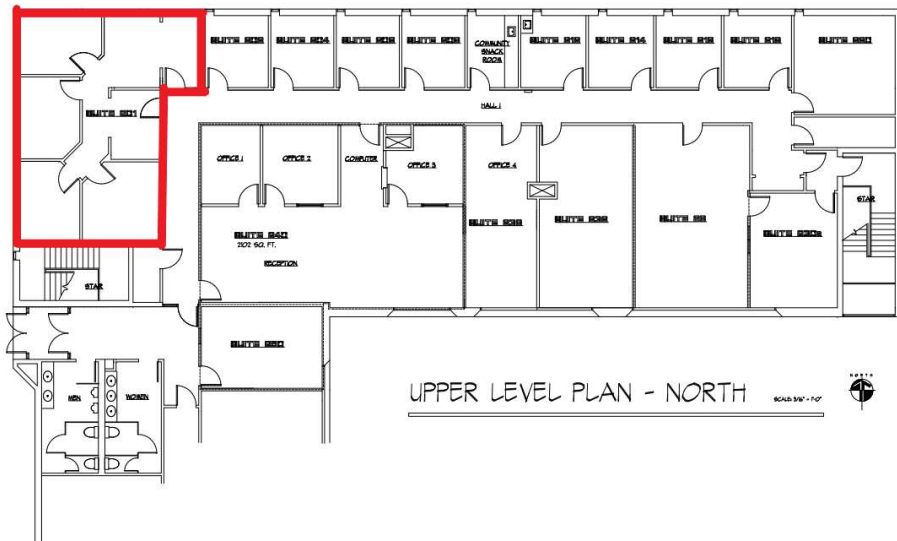
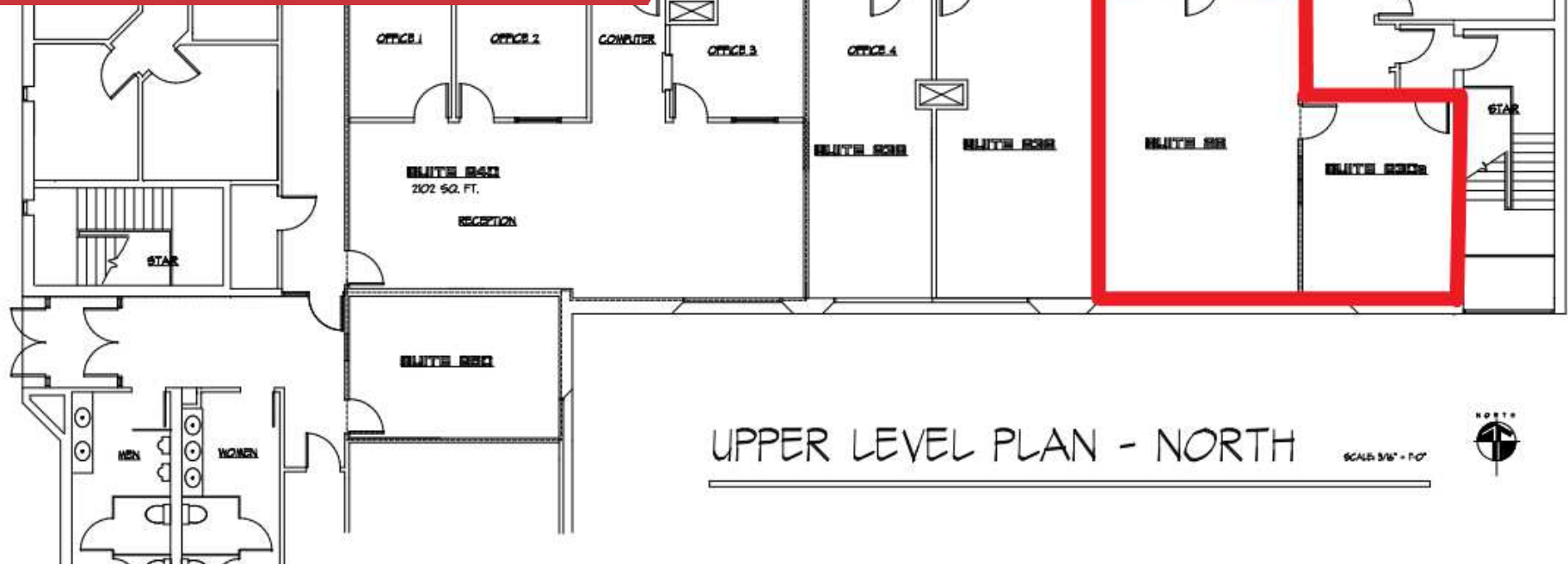
No Warranty Or Representation, Express Or Implied, Is Made As To The Accuracy Of The Information Contained Herein, And The Same Is Submitted Subject To Errors, Omissions, Change Of Price, Rental Or Other Conditions, Prior Sale, Lease Or Financing, Or Withdrawal Without Notice, And Of Any Special Listing Conditions Imposed By Our Principals No Warranties Or Representations Are Made As To The Condition Of The Property Or Any Hazards Contained Therein Are Any To Be Implied.

✉ **Scott Kaster**
+1 937 673 4366
scott@bergman-group.com

NALBergman

FOR LEASE

2555 S Dixie Dr Dayton, OH 45409



No Warranty Or Representation, Express Or Implied, Is Made As To The Accuracy Of The Information Contained Herein, And The Same Is Submitted Subject To Errors, Omissions, Change Of Price, Rental Or Other Conditions, Prior Sale, Lease Or Financing, Or Withdrawal Without Notice, And Of Any Special Listing Conditions Imposed By Our Principals No Warranties Or Rep. resentations Are Made As To The Condition Of The Property Or Any Hazards Contained Therein Are Any To Be Implied.

✉ **Scott Kaster**
+1 937 673 4366
scott@bergman-group.com

NALBergman