

Commercial Intensive Outdoor Storage Lot for Sale

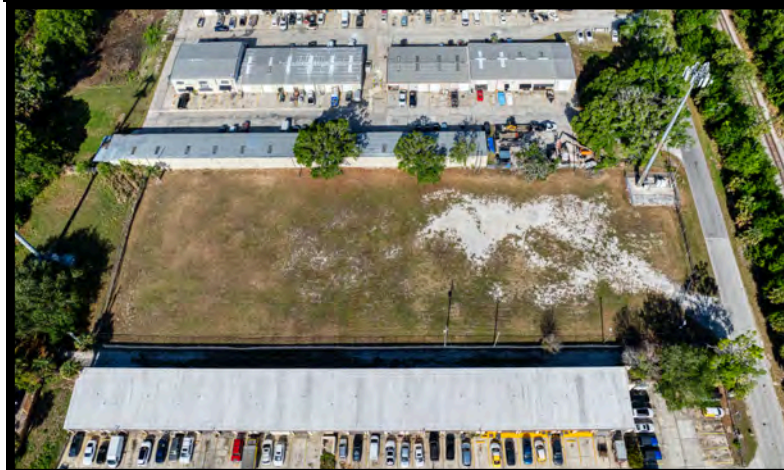
9400 Lazy Lane, Tampa, FL 33614

1.90 Acres | Fenced In | Crushed Gravel | Zoned CI | 185 ft x 450 ft

Price: \$2,500,000

This parcel is located at 9400 Lazy Lane, Tampa, FL 33614, directly off Dale Mabry Hwy on Lazy Lane just south of Busch Blvd. This parcel is ideal for a buyer that wants to utilize the ability to store equipment, vehicles or supplies now (landscape company, automotive use, etc.) and prepare for development of the parcel in the future. This parcel can accommodate up to a 30,000 square foot warehouse building on site. This is an ideal parcel for an IOS Developer or Industrial/Commercial end user. Great location, positioned in the heart of Tampa!

**Ideal Uses: Outdoor Storage of Equipment, Vehicles or Supplies,
Laydown Yard, Commercial Uses or Industrial Warehouse**



Drone Video



CLICK HERE 

Aerial Photos



CLICK HERE 



Jeff Dervech

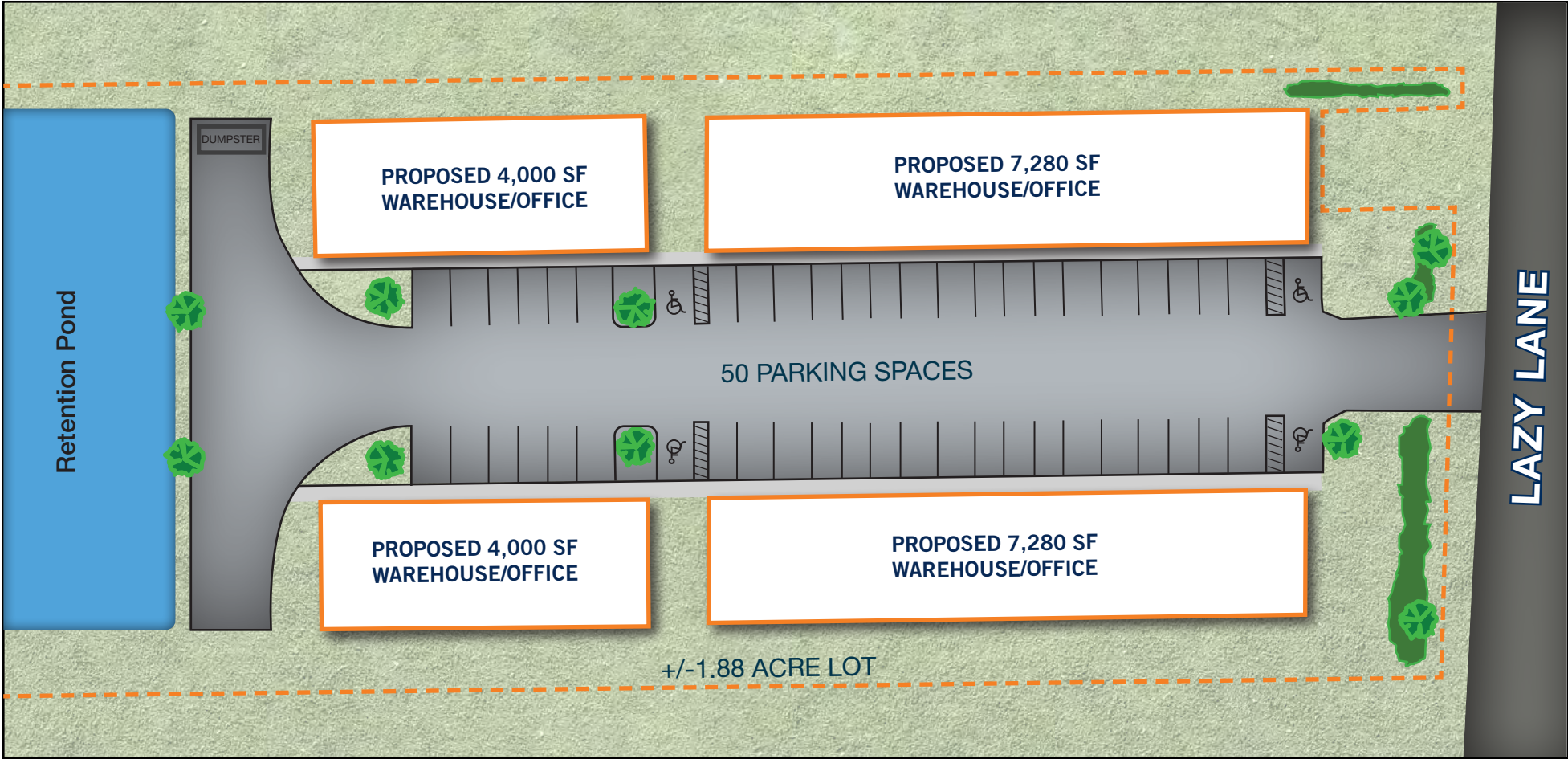
Mobile: 813-766-9639

jdervech@dervechre.com

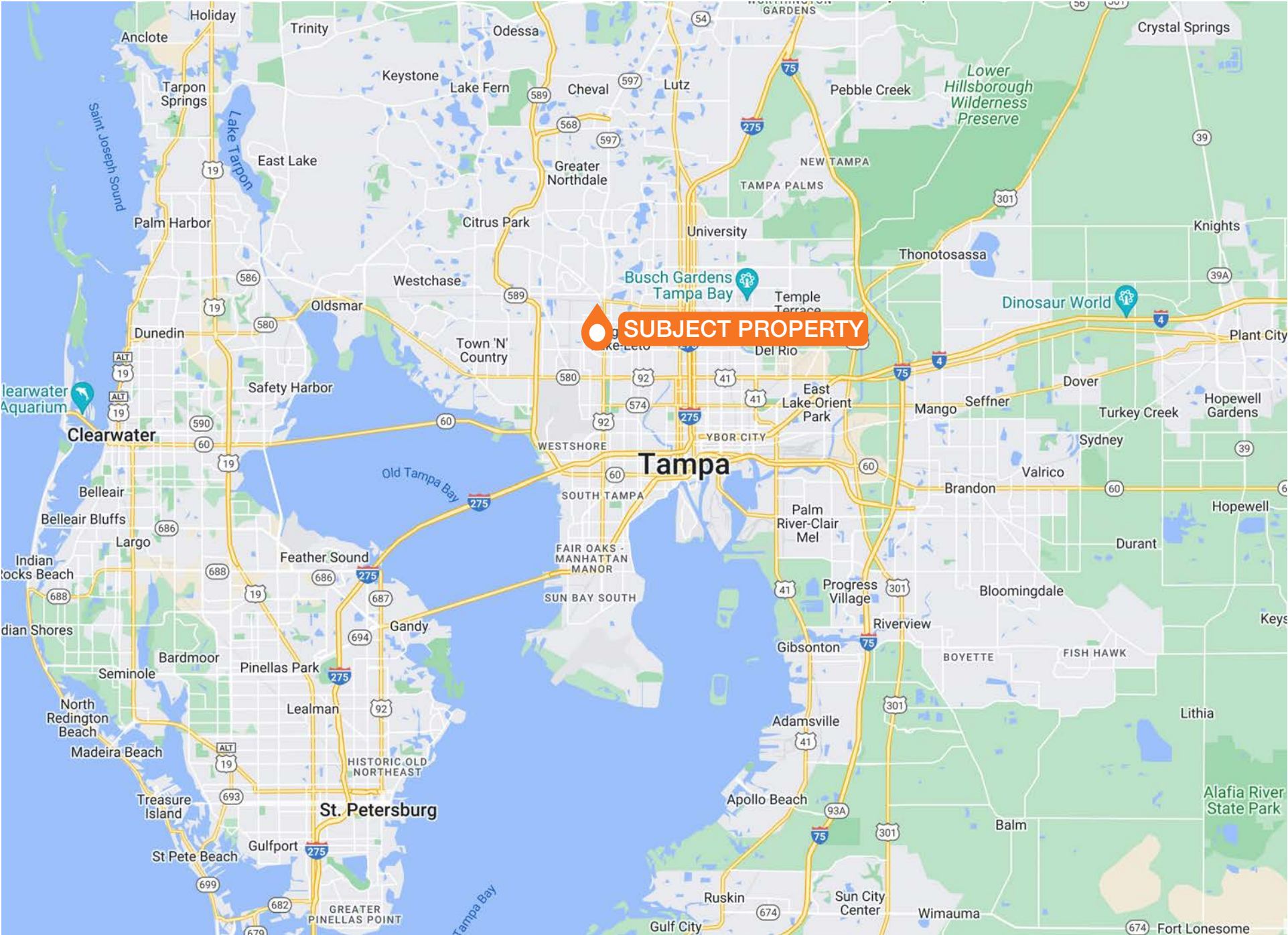


REPRESENTATIVE RENDERING

PROPOSED DEVELOPMENT // 9400 LAZY LANE



Not to Scale



SUBJECT PROPERTY