



For lease

Free-standing building
available

55 Tulip Place
Garden City Park, NY 11040

Property details

Building size: 3,830 SF

Office: 200 SF

Clear height: 14' in 2,400 SF
18' in 1,400 SF

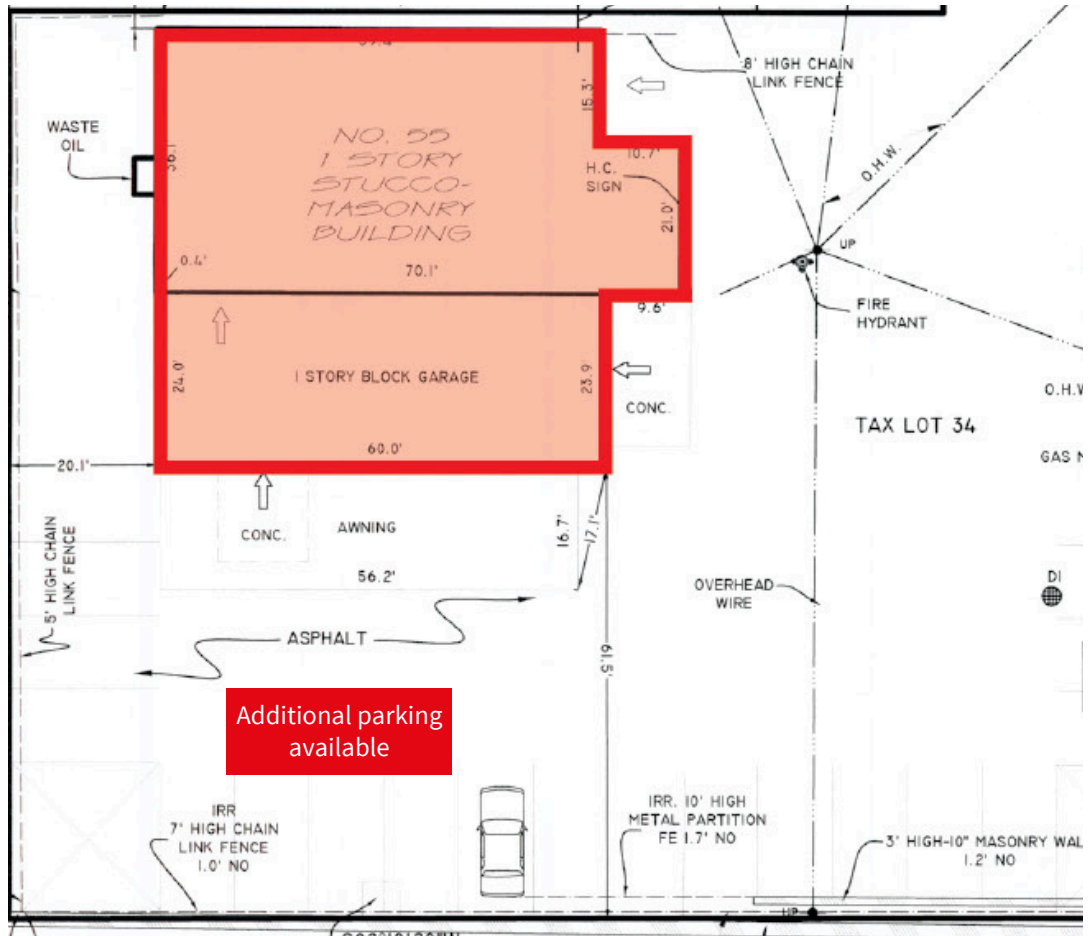
Drive-in doors: 3

Comments:

- Parking in front of and behind the building
- Additional parking available

Tom DiMicelli
Senior Managing Director

tom.dimicelli@jll.com
+1 631 962 2898



Key distances

0.3 miles

to Jericho Turnpike

0.6 miles

to LIRR Mineola

3.65 miles

to Queens

8.9 miles

to JFK Airport

11.9 miles

to LaGuardia Airport

16.4 miles

to Manhattan

