

# Retail For Sale

Berkshire Hathaway HomeServices Carolina Premier Properties

1612 Military Cutoff Rd Ste200 Wilmington, NC 28403 | 910-256-0021

## NORTHSIDE SERVICE CENTER

2708 Trademark Rd, Wilmington, NC, 28405

Retail: Auto Repair For Sale

Prepared on April 01, 2024

1 of 1 Listings



### Listing Details | Retail For Sale

Total Available Space	<b>3,245 SF</b>
Asking Price	<b>\$1,200,000</b>
Listing Price Per SF	<b>\$369.80</b>
Cap Rate (Actual)	-
Terms	<b>cash or partial owner financing</b>
Vacant	<b>No</b>

Available Date	<b>Now</b>
Days On Market	<b>5 days</b>
Date Listed	<b>3/27/2024</b>
Last Modified	<b>3/28/2024</b>
Listing ID	<b>40025626</b>
Parking Spaces	-

### Description

#### BUSINESS AND REAL ESTATE PACKAGE FOR SALE

This full-service auto center has been operating successfully for over 20 years. It is located in the heart of the Northchase area of Wilmington, NC, and is surrounded by retail, office, industrial, and residential development. Office space consists of waiting room with sales counter, private office, storage room, and two restrooms. The Shop space has three drive thru bays, and full service area pit.

### Property Features

#### Location Details

Address	<b>2708 Trademark Rd, Wilmington, NC, ...</b>
Zoning	<b>PD</b>
County	<b>New Hanover</b>

Parcels	<b>3230-95-0295.000</b>
Name	<b>2708 Trademark Rd</b>

## Building Details

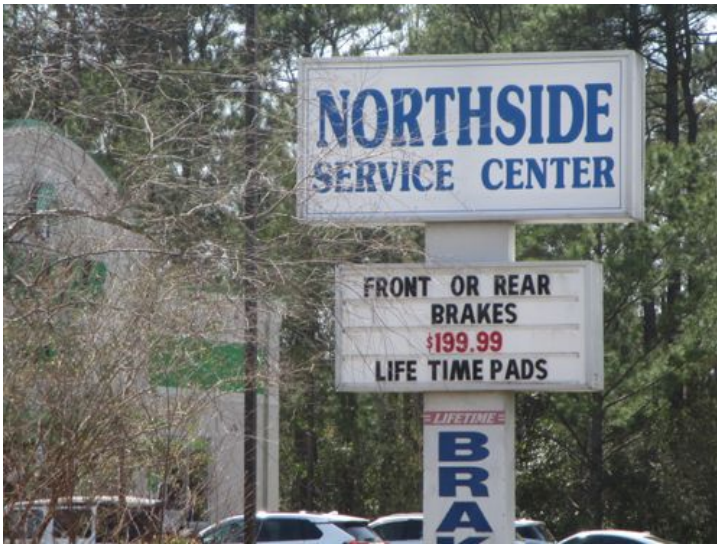
Sub Type	<b>Auto Repair</b>	Year Built	<b>2003</b>
Building Status	<b>Existing</b>	Primary Constr. Type	<b>Framed</b>
Building Size	<b>3,245 SF</b>	Occupancy Type	<b>Single Tenant</b>
Land Size	<b>0.52 Acres / 22,695 SF</b>	Parking Spaces	-
Number of Buildings	<b>1</b>	Parking Ratio	-
Number of Floors	<b>1</b>		

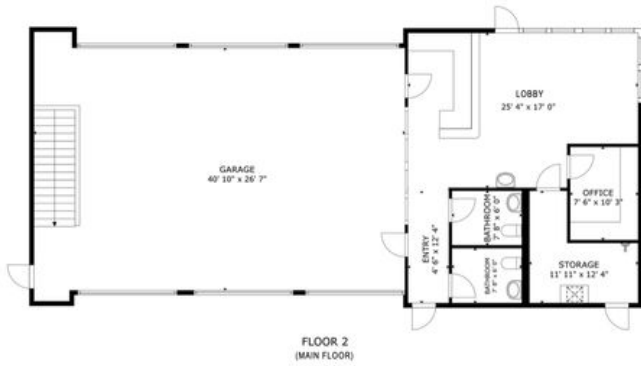
## Property Listings

1 Listing | 3,245 SF | \$1,200,000

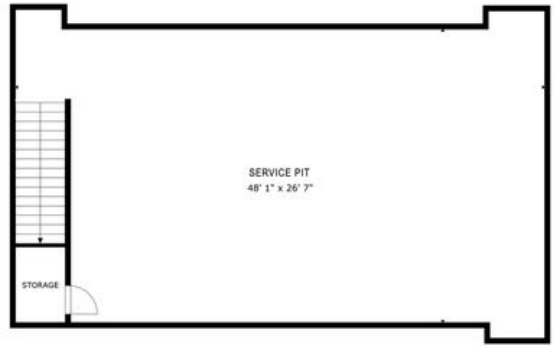
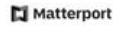
Type	Condo	Space Use	Suite	Available Space	Rate	Available
For Sale	-	Retail	-	3,245 SF	\$1,200,000	Now

## Additional Photos



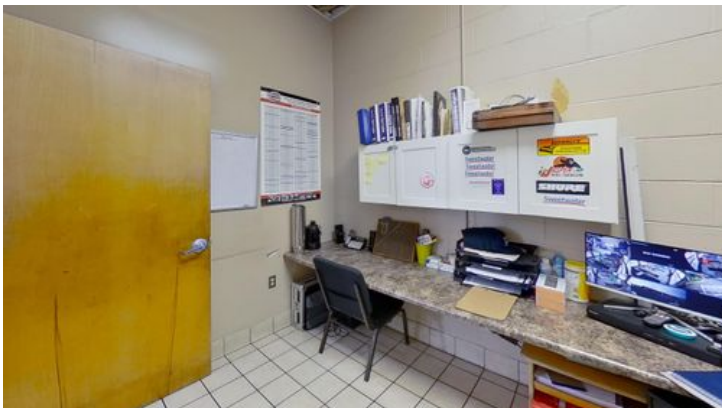


**FLOOR 2  
(MAIN FLOOR)**

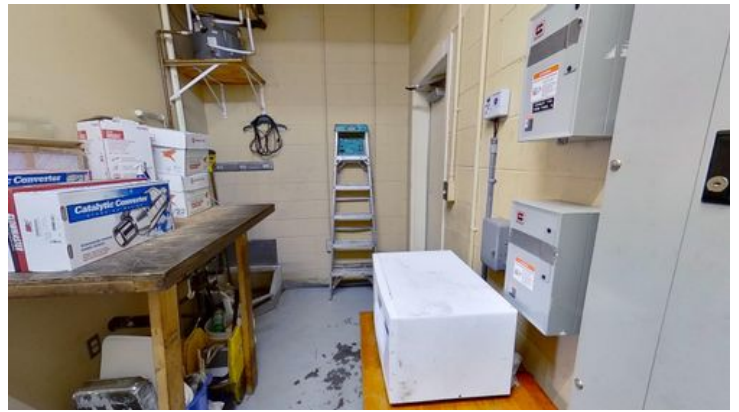


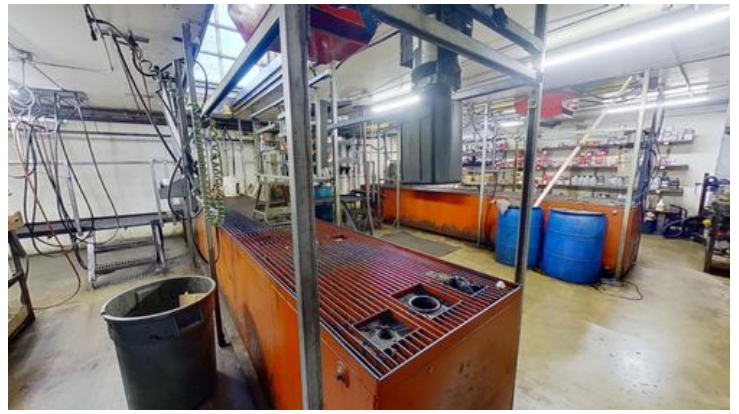
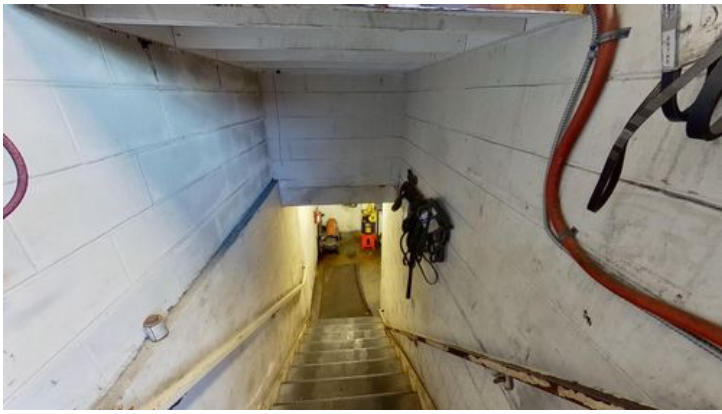
**FLOOR 1  
(BASEMENT)**

















## Contact



**Lynn Harris**  
910-520-1180  
lynnharrisccim@aol.com



Berkshire Hathaway HomeServices Carolina Premier Properties