

EXCLUSIVE RESTAURANT SPACE AVAILABLE

AAA Four Diamond Luxury Hotel



THE WESTIN
ANAHEIM RESORT

MOTTI FARAG

Partner
(949) 302-6711
motti.farag@sra-re.com
Lic. #01985423

CHRIS FREDRICK

Director of Retail Hospitality
(949) 805-1610
chris.fredrick@sra-re.com
Lic. #01042804

J. MATTHEW SPECTOR

Associate
(949) 933-5882
matthew.spector@sra-re.com
Lic. #02303623



AT THE CENTER OF SOUTHERN CALIFORNIA PREMIER TOURIST DESTINATION



28 M +
Annual Visitors to
Disneyland Resort

26 M
Annual Visitors to
Anaheim Resort District

1 M +
Annual Attendees to
Anaheim Convention Center

618
Hotel Rooms at
The Westin Anaheim Resort

\$16 B +
Economic Impact From
Disneyland Resort

THE WESTIN STORY

THE WESTIN ANAHEIM RESORT

Anaheim's Premier Luxury Hospitality Experience

The Westin Anaheim Resort is a AAA Four Diamond luxury property located at the heart of Anaheim's premier tourist district.

Recognized for its exceptional guest experience, forward-thinking design, and strong brand equity, the hotel has quickly established itself as one of the most sought after hospitality destinations in Southern California.

AAA Four Diamond Hotel

Holds a 4.5 Diamond status, placing it among the top luxury hotels in the region.

#1 Hotel in Anaheim (2025)

Achieved Gold Status for 2025 by U.S. News & World Report

Marriott Guest Experience Award (2024)

Top-tier recognition for guest satisfaction and service excellence.

Hotel Opening of the Year (2021)

Marriott Franchise Distinctive Premium Hotels category.

Design & Brand Equity Honors

Recognized by Marriott for its forward-thinking design and thoughtful integration of Anaheim's citrus heritage, seamlessly reflecting the Westin brand's wellness-driven philosophy.



THE WESTIN
ANAHEIM RESORT

A CURATED DINING DESTINATION



FLEMING'S PRIME
STEAKHOUSE & WINE BAR



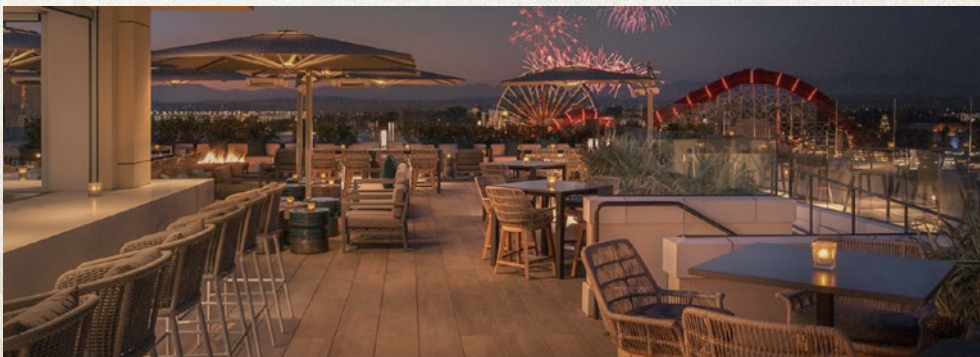
PUESTO



BAR 1030



TANGERINE ROOM



RISE ROOFTOP LOUNGE

THE WESTIN ANAHEIM RESORT

Where Dining Meets Destination

The Westin Anaheim Resort is situated in one of the most dynamic and lucrative markets in the nation. Attracting affluent tourists and locals alike, the Anaheim Resort District features an active, thriving culinary scene that caters to an elite audience with a growing demand for unique, upscale dining experiences.



3,000 SF
AVAILABLE SPACE

Disneyland



3,000 SF
AVAILABLE SPACE

Puesto

F Fleming's
PRIME STEAKHOUSE & WINE BAR

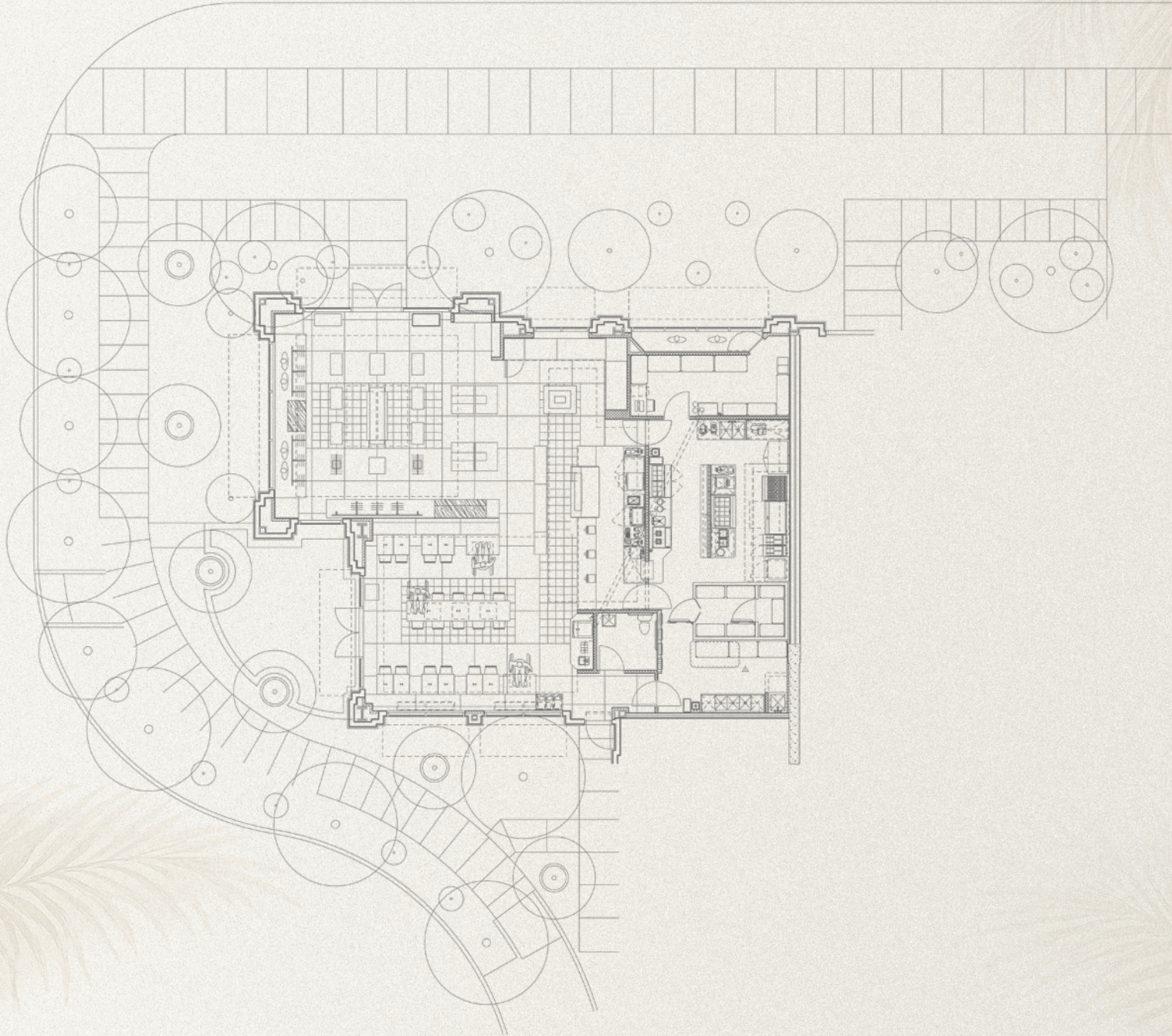
CONNECTED & HIGH-TRAFFIC LOCATION



THE SPACE

W KATELLA AVENUE

ENTRANCE DRIVE



THE SPACE



1020 W KATELLA AVE, ANAHEIM, CALIFORNIA 92802

MOTTI FARAG

Partner
(949) 302-6711
motti.farag@sra-re.com
Lic. #01985423

CHRIS FREDRICK

Director of Retail Hospitality
(949) 805-1610
chris.fredrick@sra-re.com
Lic. #01042804

J. MATTHEW SPECTOR

Associate
(949) 933-5882
matthew.spector@sra-re.com
Lic. #02303623