



For Lease
Office/Flex Suites

Mount Laurel Industrial Plaza

113 Gaither Drive, Mt. Laurel, NJ



Current Availabilities

Unit 202

- 5,000± SF unit
- 2,500± SF office, newly painted & carpeted
- Mezzanine storage above office
- 17' clear ceilings
- (1) 8' x 10' loading door
- 300 amp 3 phase 4 wire
- Private offices
- 1 male and 1 female restroom

Unit 204B

- 5,000± SF unit
- 5 private offices; large cafeteria
- Potential for more build-to-suit office space
- (1) 8' x 10' loading door
- 17' clear ceilings power
- 300 amp, 3 phase, 4 wire
- 1 male & 1 female restroom

Mount Laurel Industrial Plaza is located within East Gate Business Center, minutes away from Exit 4 of the NJ Turnpike and Interchange 36 of I-295. The park is well connected to the area's primary routes, including Routes 38, 70 & 73.

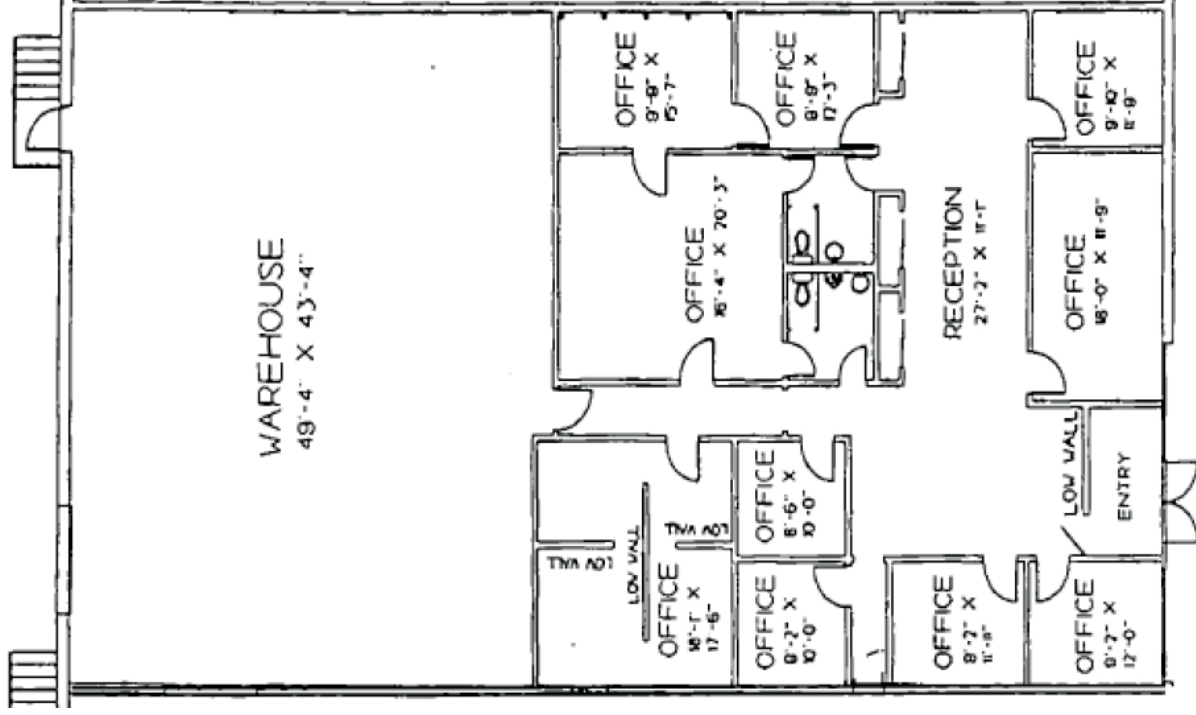
For more information:

Scott Mertz, SIOR

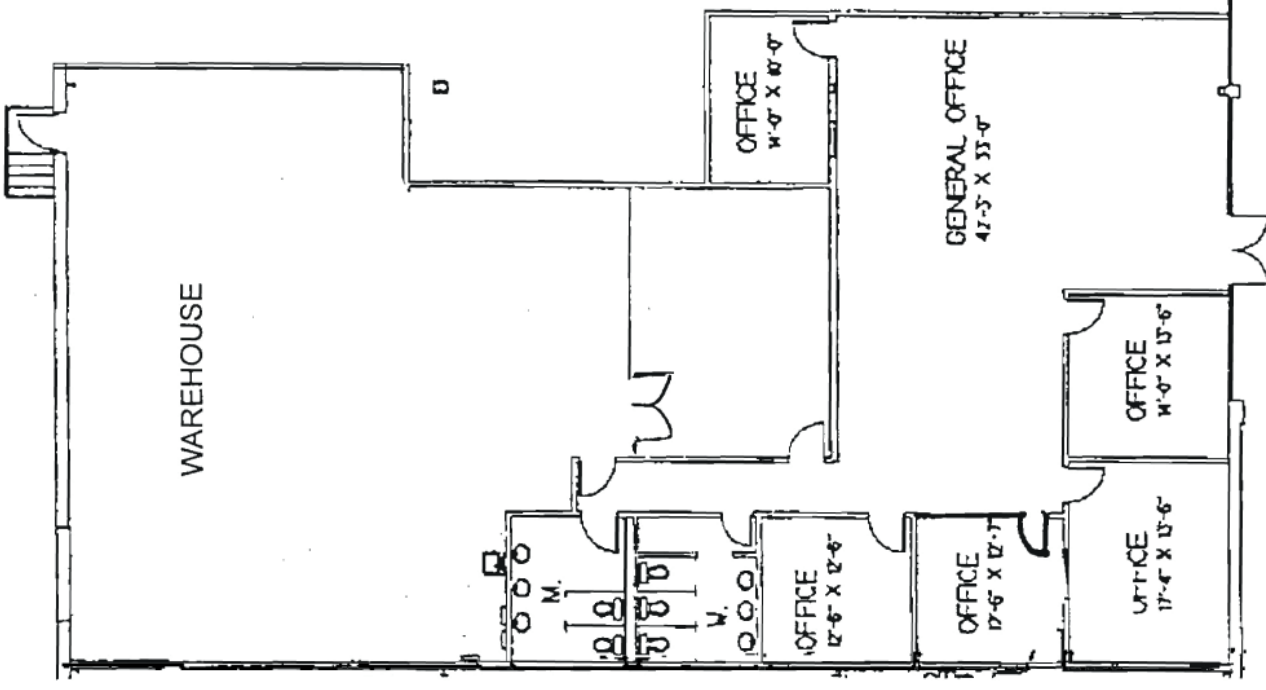
+1 856 802 6529
scott.mertz@naimertz.com

Floorplans Mount Laurel Industrial Plaza

Unit 202



Unit 204B



For more information:

Scott Mertz, SIOR

+1 856 802 6529 • scott.mertz@naimertz.com