

HILLCREST MEDICAL PARK

PREMIER MEDICAL OUT-PATIENT BUILDING

4500 HILLCREST RD



BIG | SKY[®]
MEDICAL

Schedule your tour today!

4500 Hillcrest Rd, Frisco, TX 75035

WWW.BIGSKYMED.COM

HIGHLIGHTS

#1

GROWING CITY

Ranked fastest-growing affordable city in 2025



MOVE-IN READY

Move-in ready 2nd generation medical space available



AFFLUENT AREA

\$170K avg. household income (3mi radius)



GROWING POP.

27% population growth in 5 years (Frisco)



STRONG TENANTS

Synergistic medical tenant mix

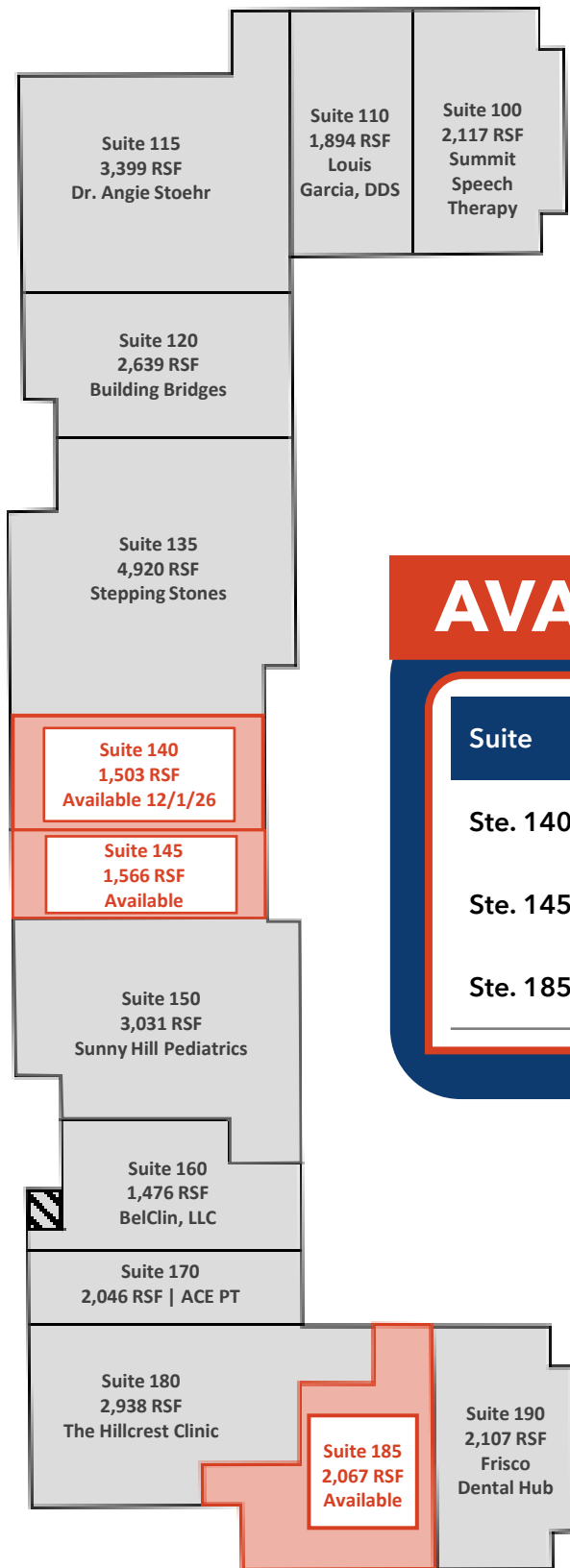


EXPERT MANAGERS

Experienced healthcare landlords & management



SITE PLAN



HILLCREST MEDICAL PARK
31,661 RSF | TOTAL
3,570 RSF | AVAILABLE

AVAILABILITIES

Suite	RSF	Min. Divisible	Contiguous	Condition
Ste. 140	1,503	1,503	-	2 nd Gen Medical
Ste. 145	1,566	1,566	-	2 nd Gen Medical
Ste. 185	2,067	2,067	-	2 nd Gen Medical



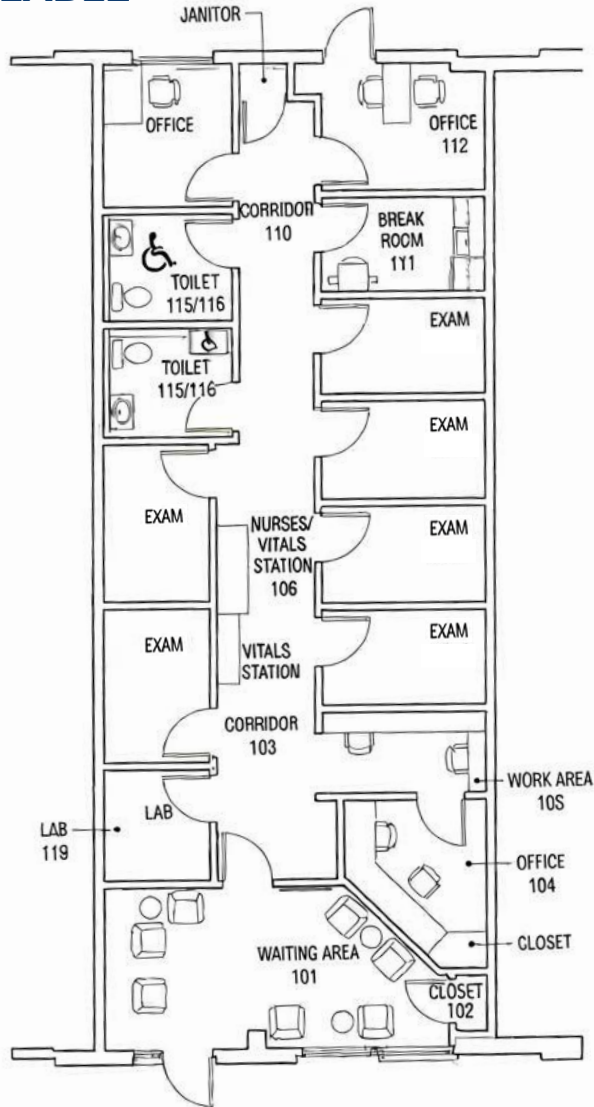
FLOOR PLAN

STE. 140

HILLCREST MEDICAL PARK

31,661 RSF | TOTAL

1,503 RSF | AVAILABLE



AVAILABILITIES

Suite	RSF	Min. Divisible	Contiguous	Condition
Ste. 140	1,503	1,503	-	2 nd Gen Medical

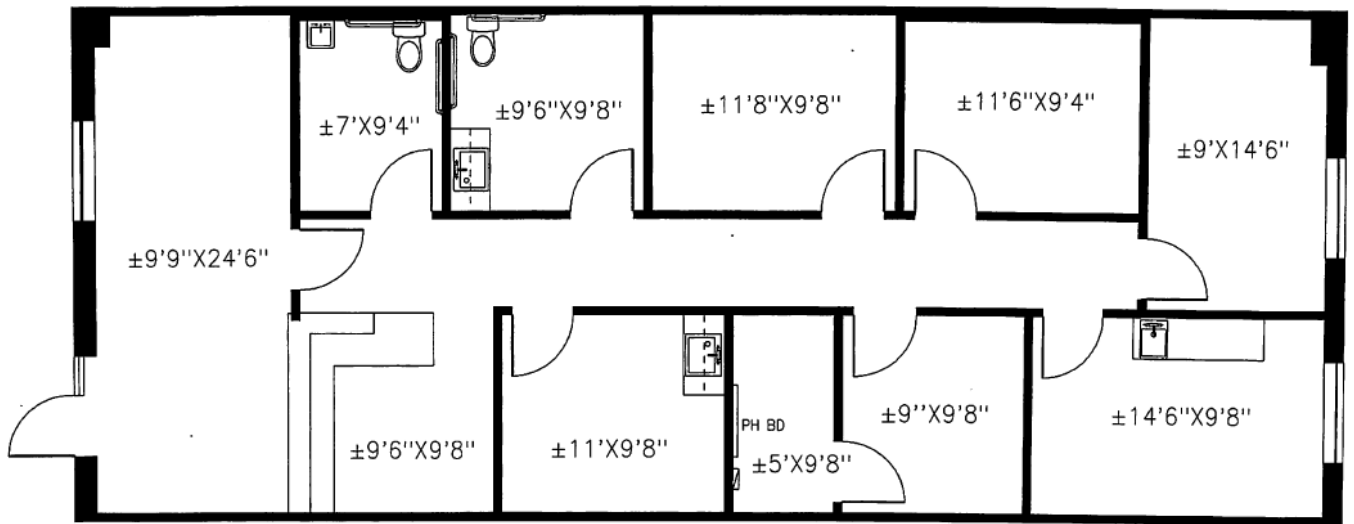
FLOOR PLAN

STE. 145

HILLCREST MEDICAL PARK

31,661 RSF | TOTAL

1,566 RSF | AVAILABLE



AVAILABILITIES

Suite	RSF	Min. Divisible	Contiguous	Condition
Ste. 145	1,566	1,566	-	2 nd Gen Medical

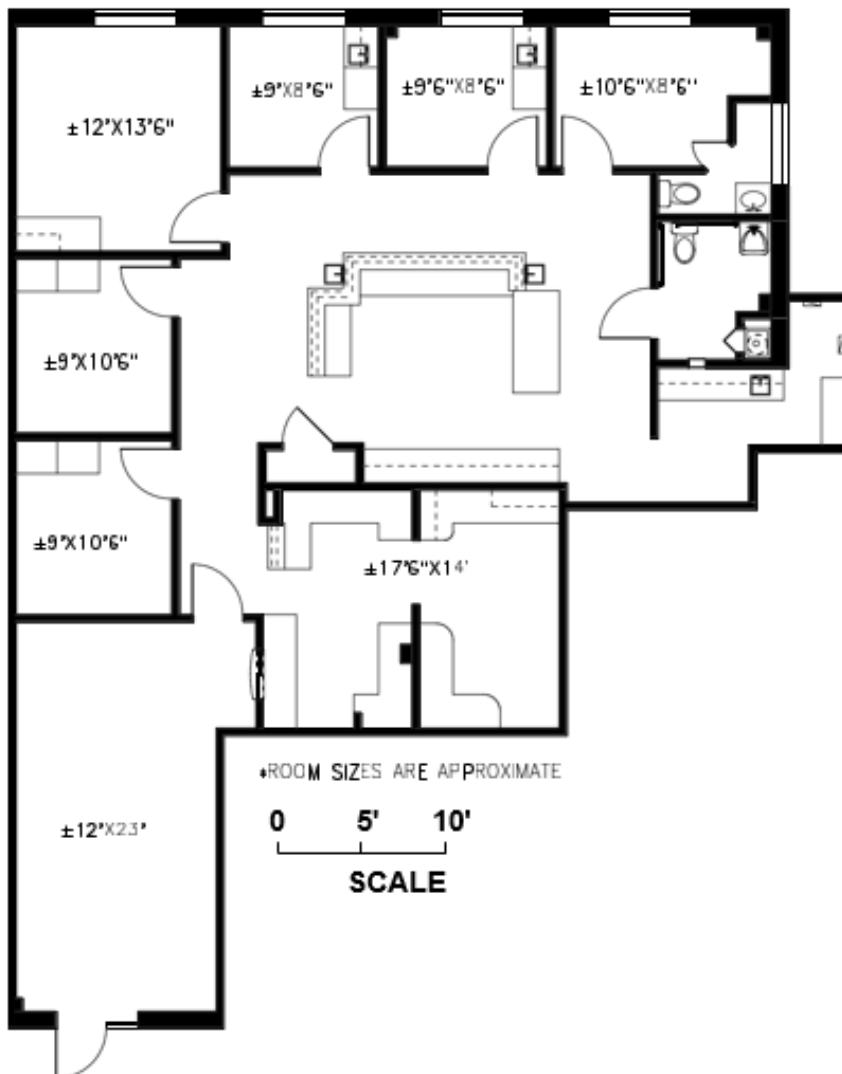
FLOOR PLAN

STE. 185

HILLCREST MEDICAL PARK

31,661 RSF | TOTAL

2,067 RSF | AVAILABLE



AVAILABILITIES

Suite	RSF	Min. Divisible	Contiguous	Condition
Ste. 185	2,067	2,067	-	2 nd Gen Medical

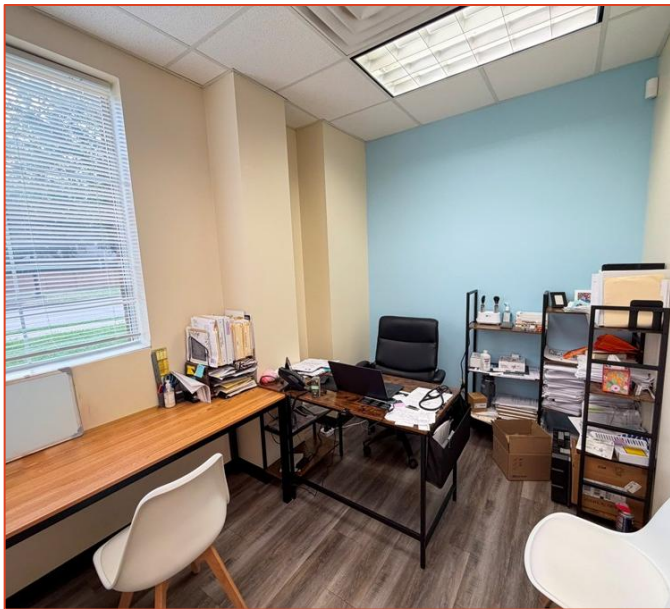
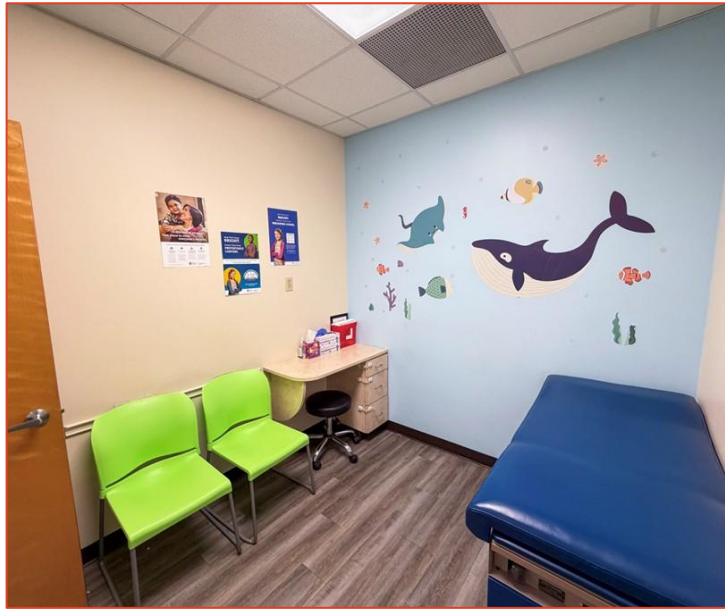
SUITE PHOTOS

STE. 140



SUITE PHOTOS

STE. 140



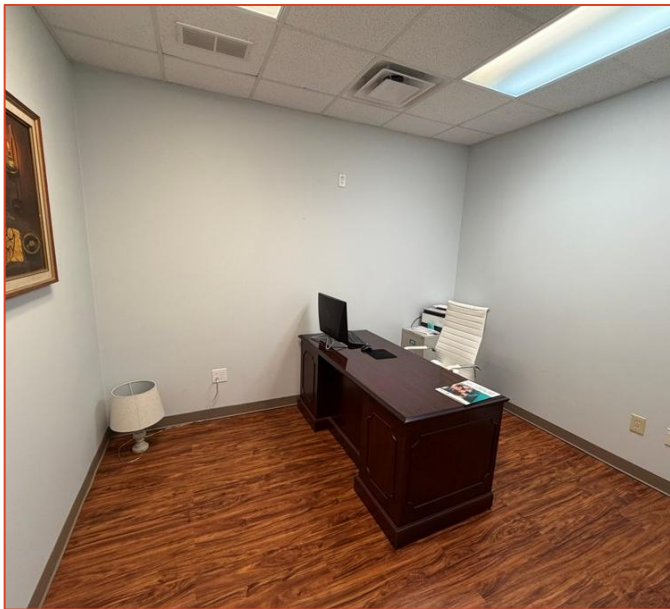
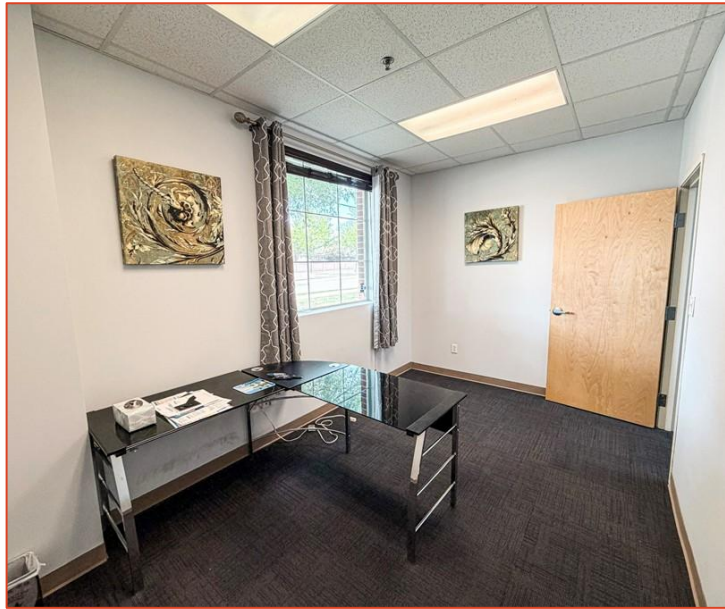
SUITE PHOTOS

STE. 145



SUITE PHOTOS

STE. 145



SUITE PHOTOS

STE. 185



SUITE PHOTOS

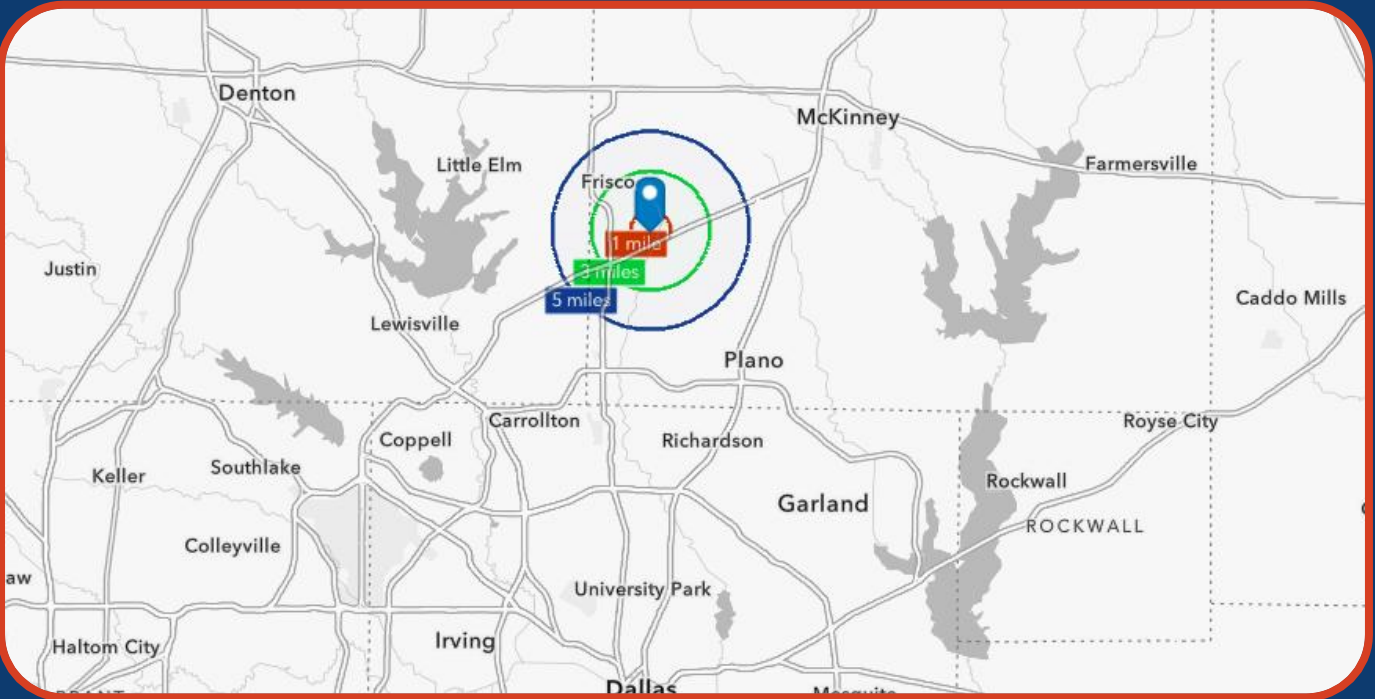
STE. 185



LOCATION



AERIAL



DEMOGRAPHICS

	1 - Mile	3 - Mile	5 - Mile
2025 Total Population	13,999	127,383	322,263
2025 Population 65+	10.0%	10.1%	11.4%
2025 Average HH Income	\$179,434	\$170,811	\$181,657
2025 Total Healthcare Spending	\$59,347,365	\$508,376,593	\$1,355,509,167

	Collin County, TX
2024 Patient to Primary Care Physician Ratio	1,027 to 1
2024 Total Insured Population	1.1M (90.9%)
2024 Total Insured 65+ Population	146K (98.3%)
2024 Total Private Coverage Population	1.0M (80.2%)
2024 Total Medicare Population	146K (11.7%)



ABOUT FRISCO

- Frisco ranked **#1 fastest-growing affordable city** in 2025
- Population ~240K in 2025, **up 18-27% in the past five years** with ~3% annual growth
- **Median household income \$141K-\$186K**, supporting strong demand for housing, retail, and healthcare.
- Frisco was named the **#1 "Best Place to Live in America"** by MONEY Magazine in 2018.

PHOTOS





4500 Hillcrest Rd, Frisco, TX 75035

CALL FOR PRICING:



NABIL ARABI

Associate

D | 469.949.8294

M | 865.382.8883

nabil@bigskymed.com



HARRISON HOROWITZ

Managing Director

D | 689.710.0811

O | 469.949.8300 x 106

harrison@bigskymed.com

WWW.BIGSKYMED.COM