

**3039 AMWILER ROAD**

ATLANTA, GA 30360

**BUILDING SIZE** 75,665 SF**AVAILABLE SF** 11,958 SF**PARKING RATIO** 1:2.97**PROPERTY HIGHLIGHTS**

Located within the City of Peachtree Corners, this property offers a prime location with excellent visibility—ideal for flex, light industrial, or retail users looking to serve the surrounding business and residential communities.

- Excellent road frontage for visibility and signage
- Flexible space layout to accommodate a wide range of uses
- Ideal for showrooms, warehouses, light manufacturing, or service-oriented retail
- Strong regional access with proximity to I-285 and major arterial routes
- Located in a well-established commercial corridor

Take advantage of a unique opportunity to locate your business in a growing and business-friendly jurisdiction, just minutes from everything metro Atlanta has to offer.

**SHELLY EVANS**

(404) 438-6029

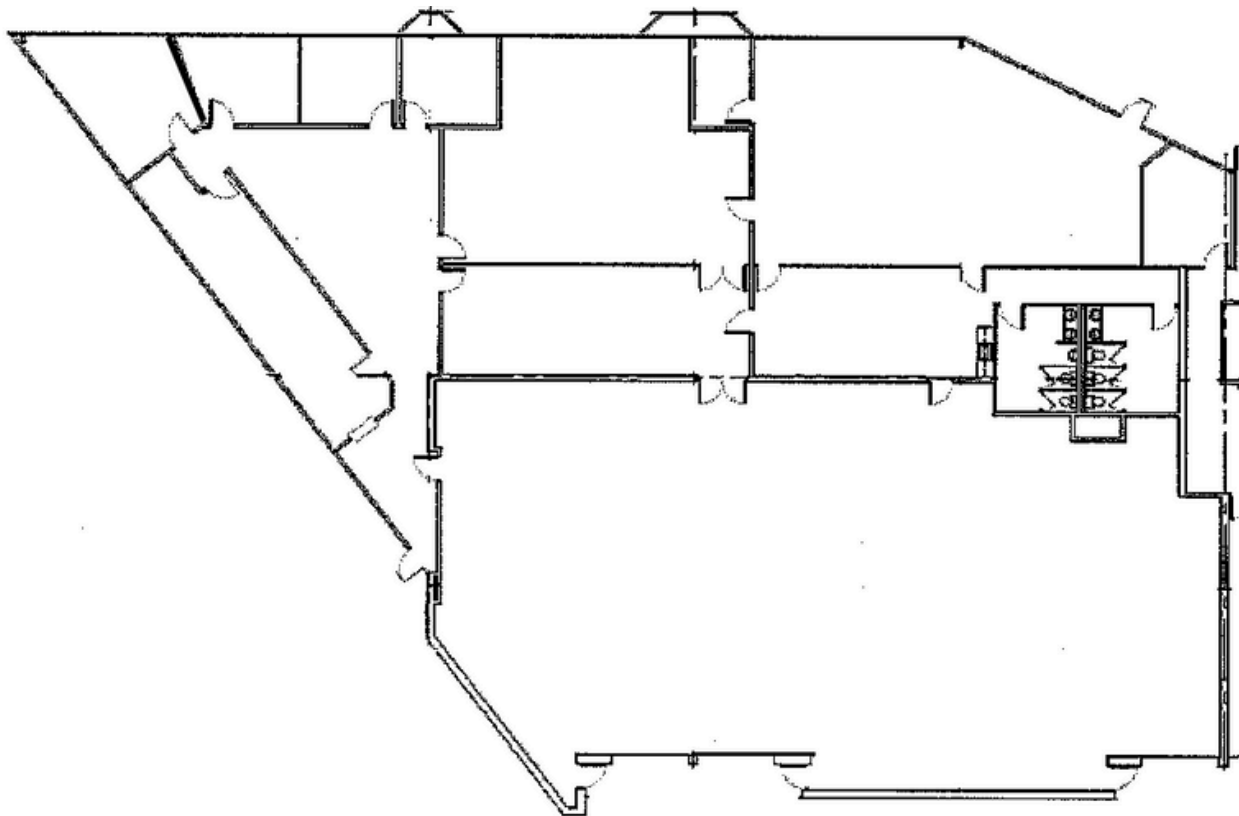
SHELLY@WEPARTNERGROUP.COM



WEPARTNERGROUP.COM

**3039 AMWILER ROAD**

ATLANTA, GA 30360



- OVER 4,700 SF OF WAREHOUSE SPACE
- THREE DRIVE-IN DOORS
- ROAD FRONTAGE
- DOCK-HIGH LOADING RAMP DIRECTLY BEHIND SUITE

**SHELLY EVANS**

(404) 438-6029

SHELLY@WEPARTNERGROUP.COM



WEPARTNERGROUP.COM