



Up to 4,247 sf of office space available for lease in the heart of Paoli along Route 252

Available Suites:

- **First floor suite:** 2,009 sf // \$23.50/SF plus electric and janitorial included
- **Second floor suites:** 626 SF // \$22.50/SF plus electric and janitorial included
794 SF // \$22.50/SF plus electric and janitorial included
- **Third floor suite:** 818 sf // \$22.50/SF plus electric and janitorial included
- 1/4 mile south of Route 30 on Route 252 (Leopard Road) and 164 spaces on site; 82 spaces per building
- Walkable to numerous area amenities

Get more information

Cathy Swanson, Senior Associate
D +1 610 276 3150
M +1 610 812 1878
cathy.swanson@avisonyoung.com

300 Barr Harbor Drive
Suite 150
West Conshohocken, PA 19428
+1 610 276 1080

Immediate Proximity to a Variety of Amenities



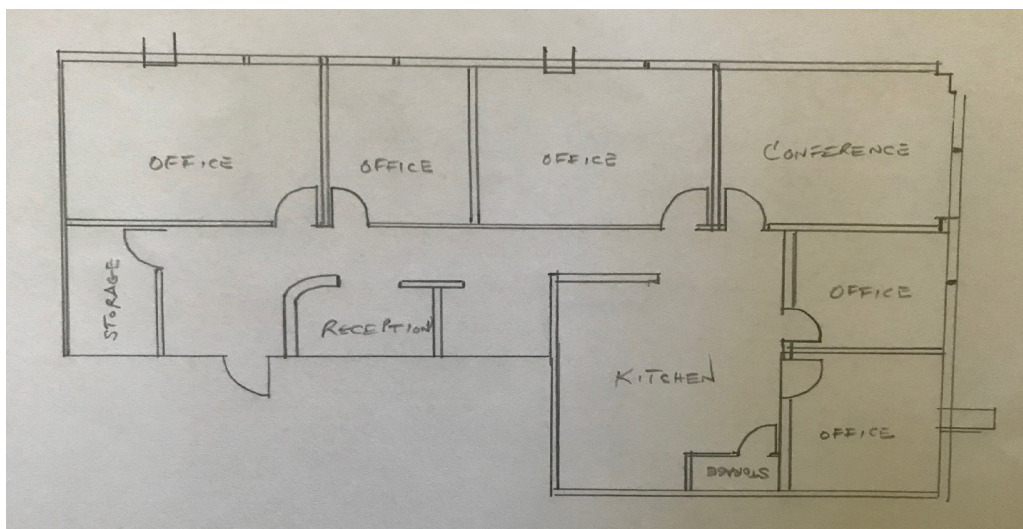
Get more information

Cathy Swanson, Senior Associate
D +1 610 276 3150
M +1 610 812 1878
cathy.swanson@avisonyoung.com

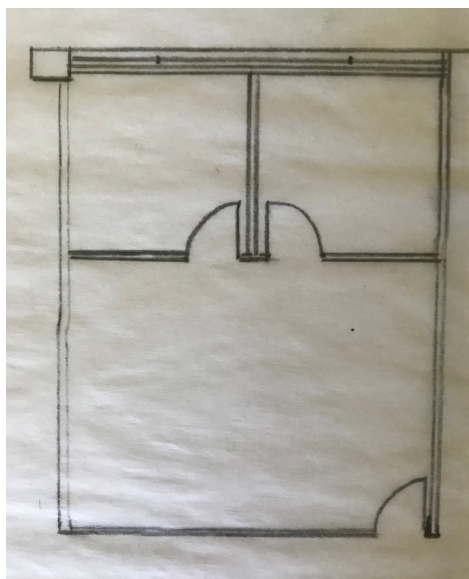
300 Barr Harbor Drive
Suite 150
West Conshohocken, PA 19428
+1 610 276 1080

1st Floor Suite: 2,009 sf

Updated finishes throughout, partially furnished, move-in ready suite. 5 private windowed offices, corner conference room, kitchen, built-in reception desk, abundant storage.

**2nd Floor Suite: 626 sf**

Two (2) private offices overlooking the courtyard. Large reception area with ample space for workstations.

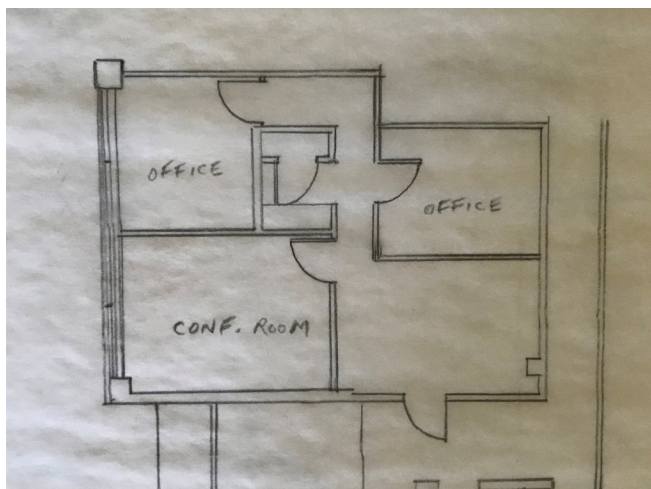
**Get more
information**

Cathy Swanson, Senior Associate
D +1 610 276 3150
M +1 610 812 1878
cathy.swanson@avisonyoung.com

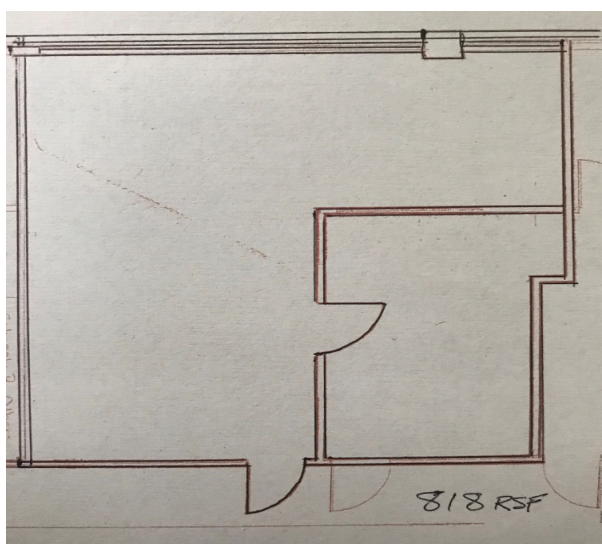
300 Barr Harbor Drive
Suite 150
West Conshohocken, PA 19428
+1 610 276 1080

2nd Floor Suite: 794 sf

Two (2) private offices, conference room, reception area and kitchenette with sink. Second floor lobby prominence.

**3rd Floor Suite: 818 sf**

Open floor plan with one private office.

**Get more
information**

Cathy Swanson, Senior Associate
D +1 610 276 3150
M +1 610 812 1878
cathy.swanson@avisonyoung.com

300 Barr Harbor Drive
Suite 150
West Conshohocken, PA 19428
+1 610 276 1080