

161C

FOR LEASE

*Newly Refurbished ±29,639 SF industrial space
with secure private yard.*

161 STARLITE ST UNIT C
SOUTH SAN FRANCISCO, CA, 94080

±29,639 SF
BUILDING

±2,000 SF
OFFICE SPACE IN BUILDING



Available now

Negotiable lease term

±29,639 total RSF

Secure private side yard with adequate parking for up to 34 vehicles plus 8 additional unreserved parking stalls

Two (2) grade level doors

One (1) dock high platform accesses, two (2) grade level door entry points

16'-17' clear height

Power 600amps 480/277 Volts 3 phase/4 wire

Earthquake retrofit complete

Sprinklers

Skylights throughout

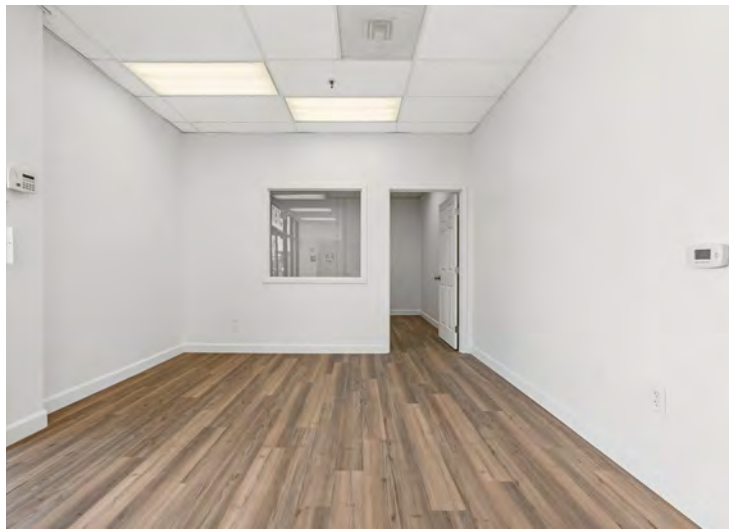
2 MI

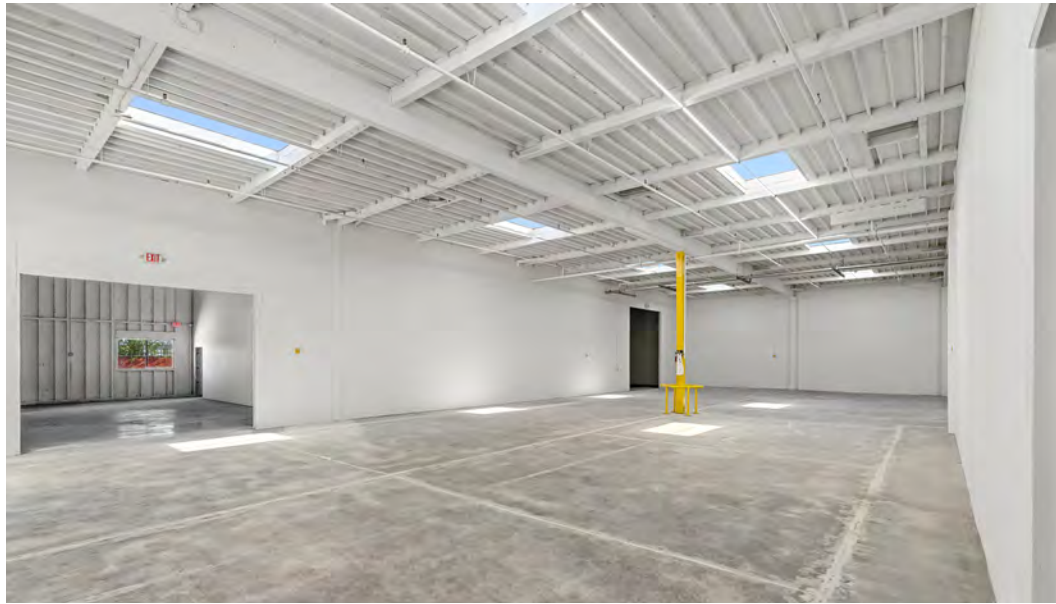
WALK TO SAN BRUNO
BART AND CALTRAIN

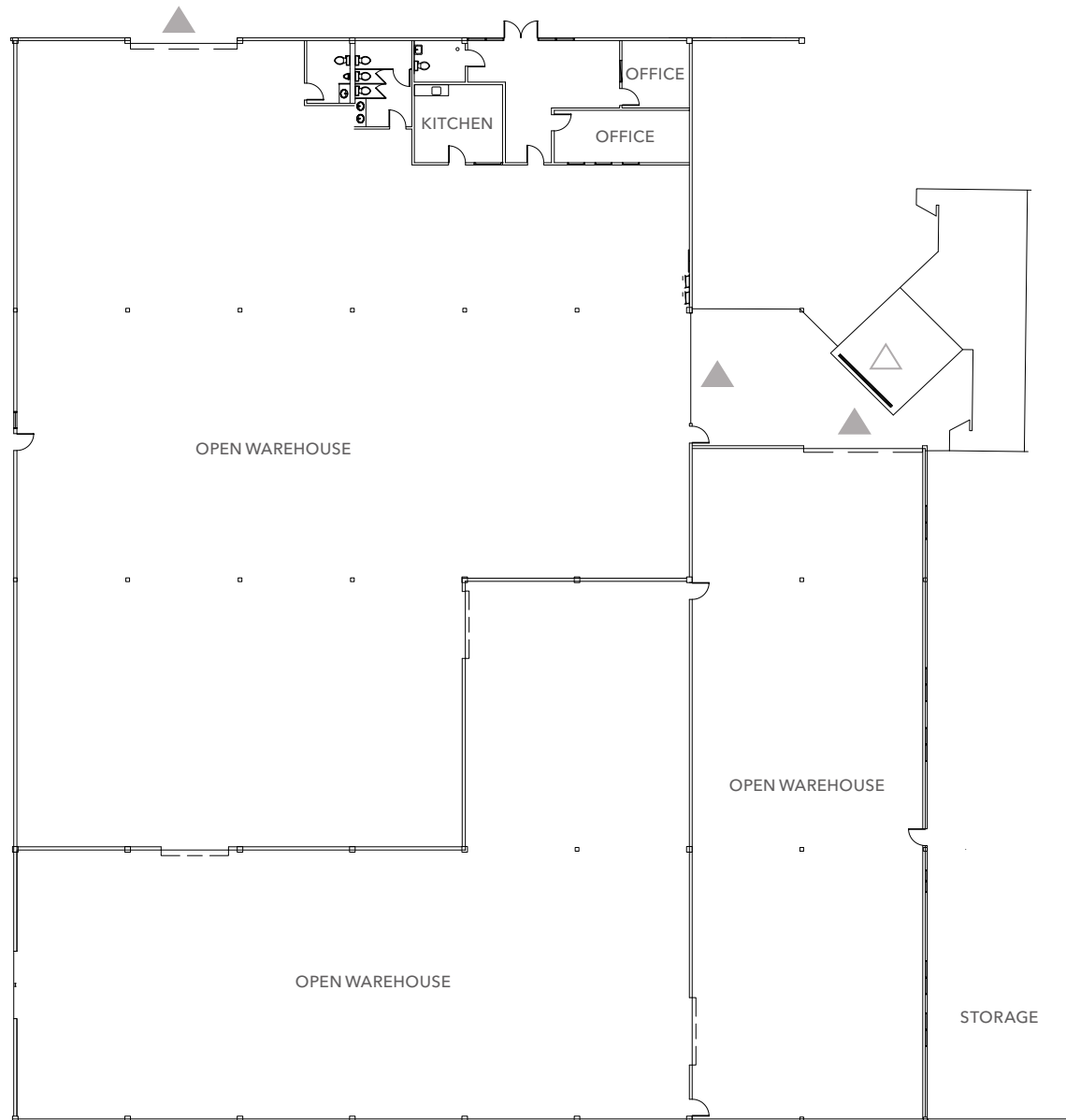
8 MIN

DRIVE TO SAN FRANCISCO
INTL AIRPORT









±29,639 SF

AVAILABLE

NOW

AVAILABLE

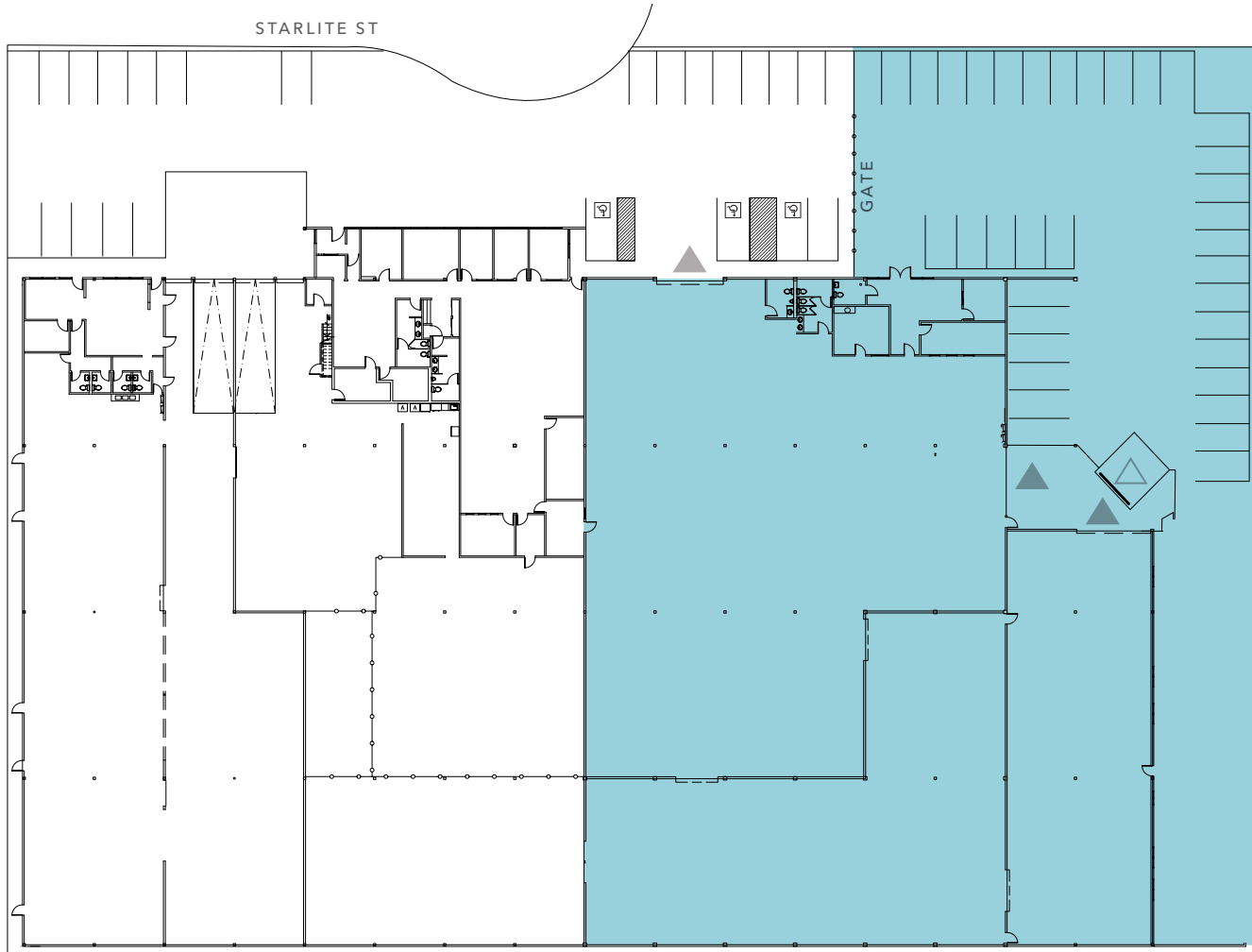
POWER: 600 amps
480/277 Volts 3 phase/4 wire
SKYLIGHTS throughout
SPRINKLERS
2 grade level doors
1 dock high door

▲ Grade level loading

△ Dock-high loading

FLOOR PLAN NOT TO SCALE

SITE PLAN



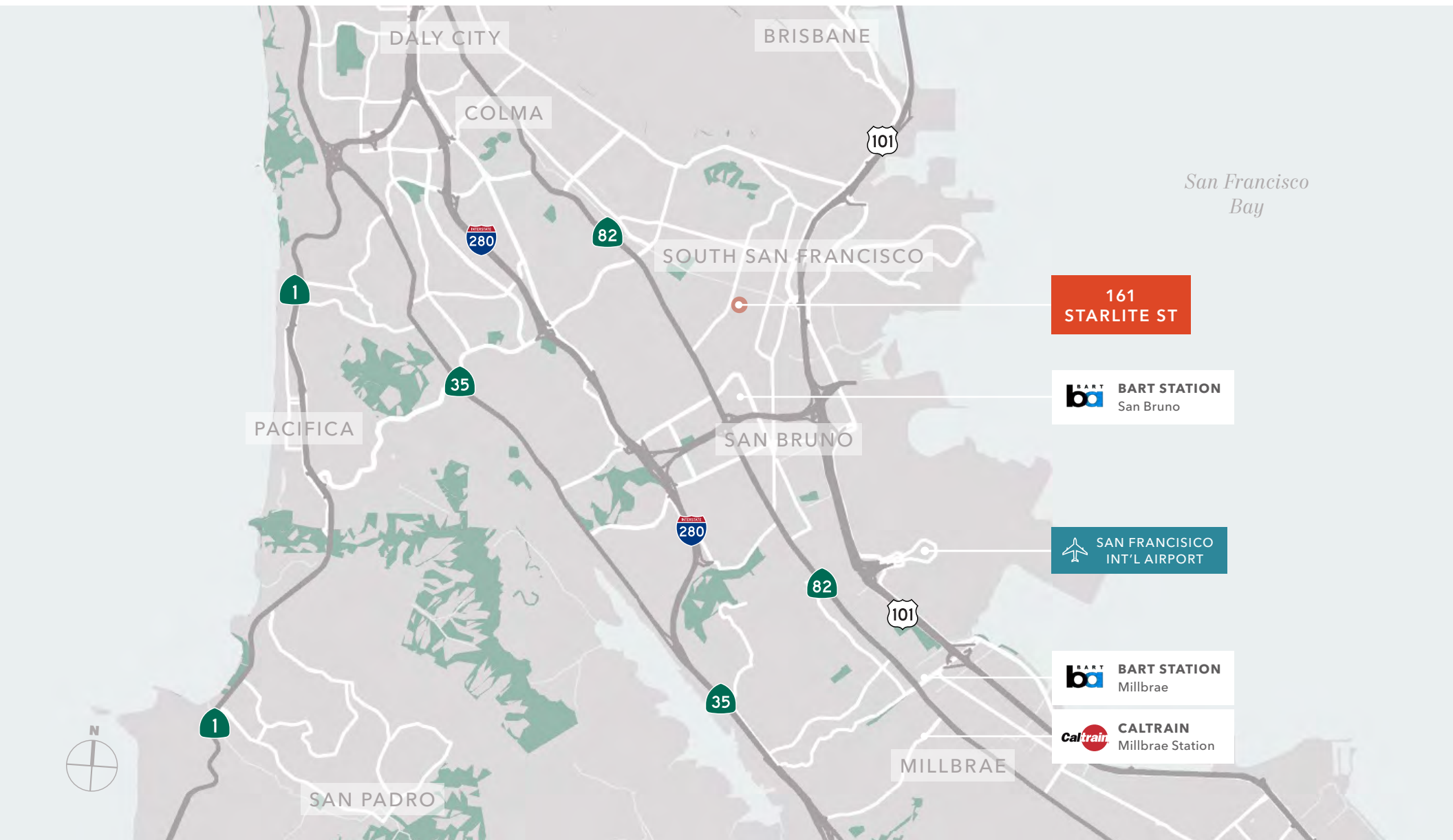
±34
PARKING SPACES

±8
UNRESERVED PARKING SPOTS

PRIVATE
GATED YARD

- ▲ Grade level loading
- △ Dock-high loading

FLOOR PLAN NOT TO SCALE





161 STARLITE ST, UNIT C

*For more information on
this property, please contact*

CARLA SCIMEMI
415.229.8955
carla.scimemi@kidder.com
LIC N° 01323582

KIDDER.COM

This information supplied herein is from sources we deem reliable. It is provided without any representation, warranty, or guarantee, expressed or implied as to its accuracy. Prospective Buyer or Tenant should conduct an independent investigation and verification of all matters deemed to be material, including, but not limited to, statements of income and expenses. Consult your attorney, accountant, or other professional advisor.

