



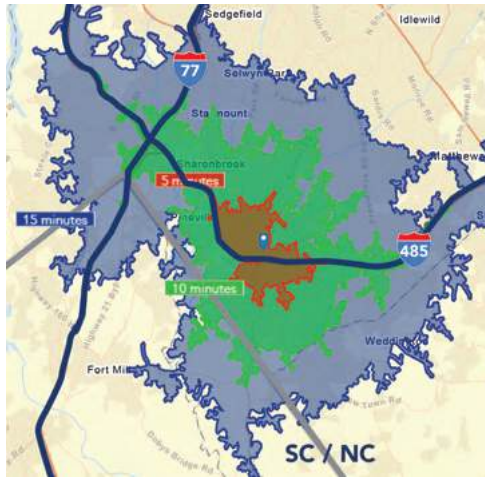
Toringdon Circle

Charlotte, NC

12210
Copper Way



1,600 SF
Available



| Population | |
|----------------|-----------|
| 5 min | 9,962 |
| 10 min | 97,470 |
| 15 min | 291,336 |
| Avg. HH Income | |
| 5 min | \$124,847 |
| 10 min | \$168,372 |
| 15 min | \$164,782 |



Breanna Lusk
336.690.3415
blusk@kourycorp.com

Joe Simpson
336.340.1731
jsimpson@kourycorp.com

336.299.9200
KouryCorp.com

KOURY
CORPORATION
BUILDER + DEVELOPER

PROPERTY FEATURES

- Toringdon Circle Shopping Center is the retail component of the popular Ballantyne mixed use development.
- The center is situated just inside the I-485 loop, at the intersection of I-485 and Johnston Rd.
- The commercial portion features Pike Garden Center, LA Fitness, 35,000 square feet of retail & restaurant space, four medical buildings, two office buildings and a Homewood Suites hotel.
- Daytime population of 359,349 within 15 minutes.



Torington Circle

Charlotte, NC



| | | | |
|-------|---------------------|------------|---------------------------|
| 12630 | Pike Nurseries | 120 | La Vida Massage |
| 138 | Viva Chicken | 212 | Hickory Tavern |
| 128 | Hollywood Feed | 218 | 1,600 SF AVAILABLE |
| 124 | 12th Man Sports Pub | 220 | PureLuxe Nails & Spa |
| 122 | Bhan Thai | 230 | Carolina Dance Capital |

336.299.9200
KouryCorp.com

KOURY
CORPORATION
BUILDER + DEVELOPER

Breanna Lusk • 336.690.3415 • blusk@kourycorp.com
Joe Simpson • 336.340.1731 • jsimpson@kourycorp.com