

CREATIVE OFFICE SUITES FOR LEASE

13470 W. WASHINGTON
BLVD. MARINA DEL REY,
CA 90292





13470 W. WASHINGTON BLVD. MARINA DEL REY, CA 90292

PREMISES

Suite 201 - ± 1,889 SF

Suite 300 - ± 6,311 SF

RENT

\$3.95/ SF MG

OCCUPANCY

Suite 201: Immediate

Suite 300: September 1, 2024

PARKING

2:1,000 at \$175/Stall Monthly

FEATURES

- 700 SF Shared Rooftop Deck
- Large Private Outdoor Patio Space
- Opportunity to Lease Entire Floor
- Major Street Frontage
- Covered, Private Parking
- Walking Distance to many Amenities
- 90 Walking Score

CONTACT

Tibor Lody, SIOR

310.899.2720

tlody@leewestla.com

AGT DRE# 01261129

Adam Levine

310.899.2703

alevine@leewestla.com

AGT DRE# 02104830

Tommy Isola

310.899.2709

tisola@leewestla.com

Aleks Trifunovic, SIOR

310.899.2721

atrifunovic@leewestla.com

BKR DRE# 01363109

Keith Fielding

310.899.2719

kfielding@leewestla.com

AGT DRE 01729915

Lee & Associates Los Angeles West, Inc.

1508 17th Street, Santa Monica, CA 90404

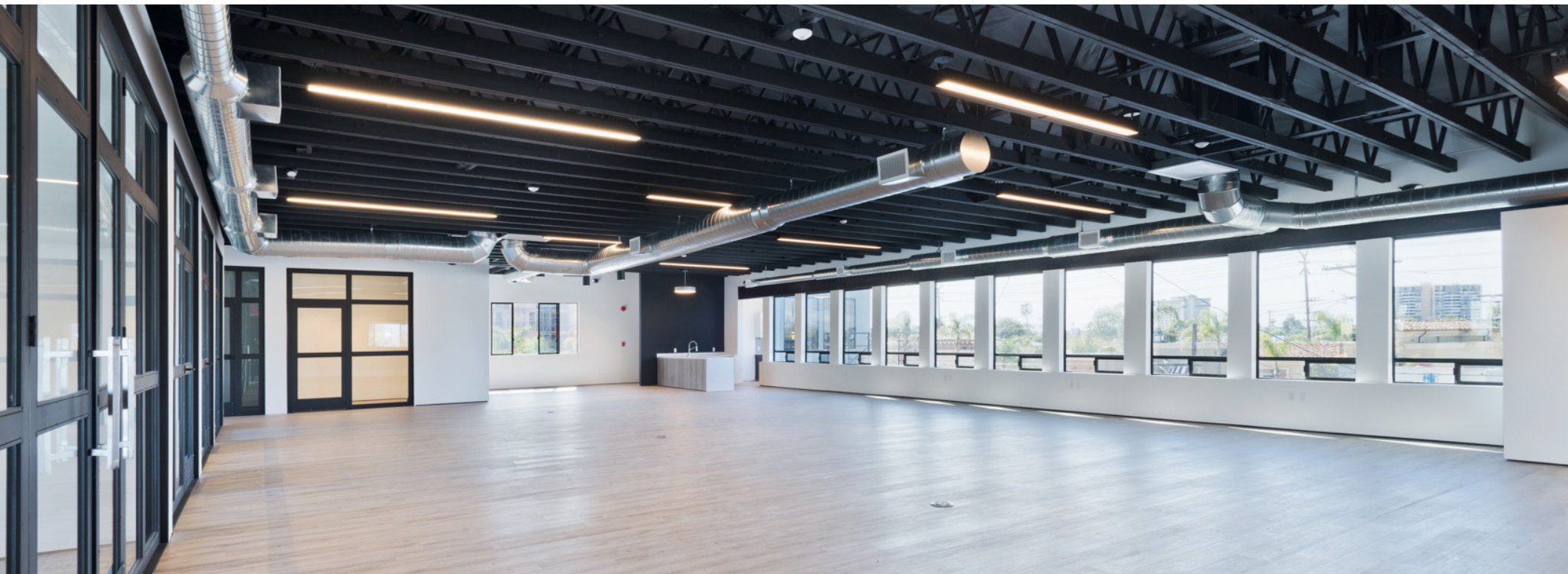
310.899.2700 | www.leewestla.com | DRE 01222000

No warranty or representation is made to the accuracy of the foregoing information.
Terms of sale or lease are subject to change or withdrawal without notice.

SUITE 201 - 1,889 SF

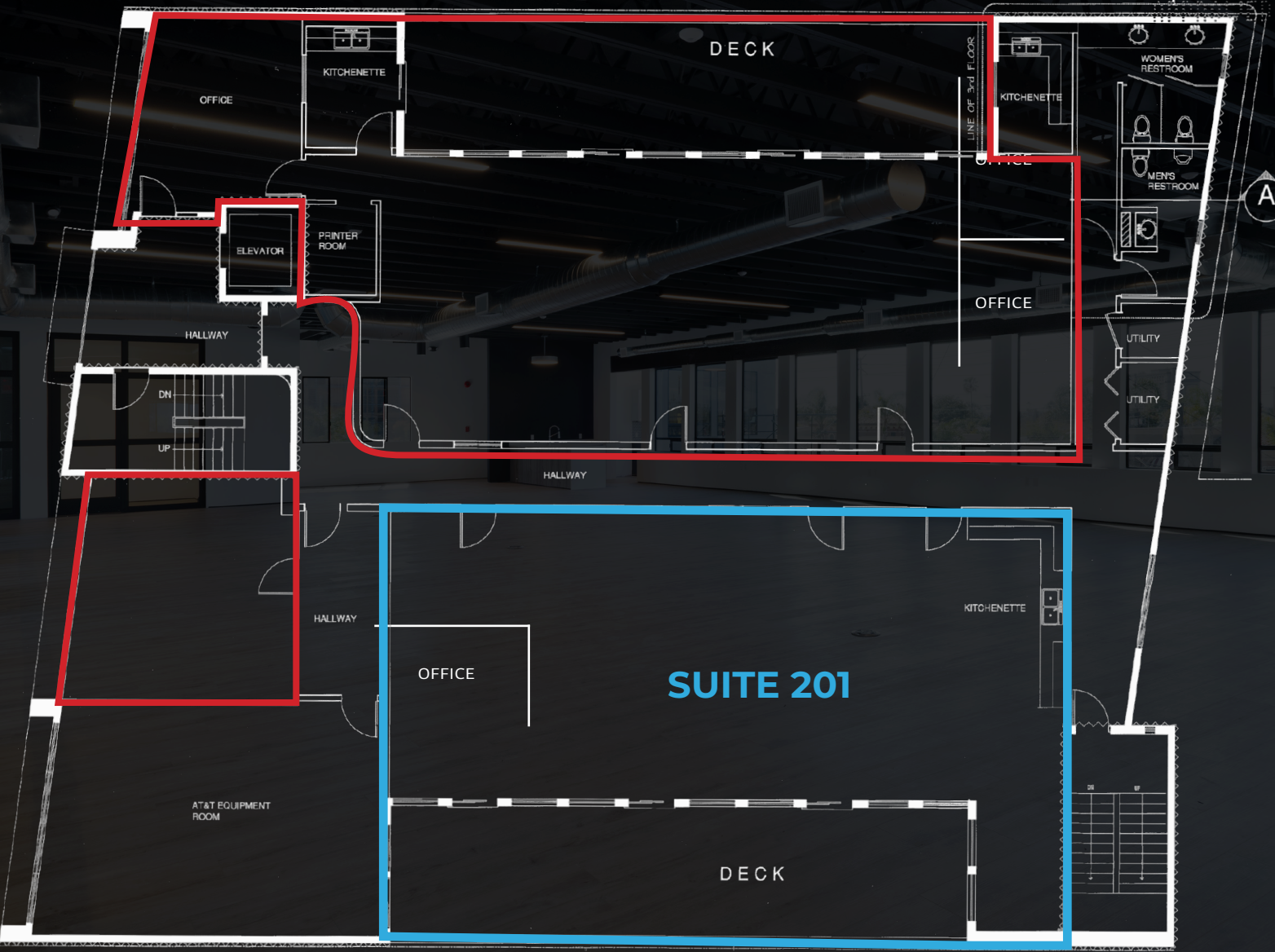


SUITE 300 - 6,311 SF



SECOND FLOOR

13470 WASHINGTON BLVD.



THIRD FLOOR



WEST WASHINGTON BLVD.

SOUTH LINCOLN BLVD.

AMENITIES MAP

VILLA MARINA MARKETPLACE MALL

IRORI SUSHI	J NICHOLS	RUTH'S CHRIS
TENDER GREENS	LE PAIN QUOTIDIEN	MIDICI PIZZA
BURGER LOUNGE	RUBIO'S COASTAL GRILL	BARBIANCA
YARD HOUSE	L&L HAWAIIAN BBQ	CAPRI GELATO

BRENNAN'S

LOCANDO POSITANO

BRU'S WIFFLE
SCOPA ITALIAN

FIRESTONE WALKER

C&O CUCINO
26 BEACH

SINNERS & SAINTS

NIGHT + MARKET

THE LINCOLN

IN N OUT

COSTCO

SUBJECT PROPERTY

KAYA SUSHI

MICHI'S JAPANESE KITCHEN

SAKURA HOUSE

MAXWELLS CAFE





Tibor Lody, SIOR
310.899.2720
tlody@leewestla.com
AGT DRE# 01261129

Aleks Trifunovic, SIOR
310.899.2721
atrifunovic@leewestla.com
BKR DRE# 01363109

Adam Levine
310.899.2703
alevine@leewestla.com
AGT DRE# 02104830

Keith Fielding
310.899.2719
kfielding@leewestla.com
AGT DRE 01729915

Tommy Isola
310.899.2709
tisola@leewestla.com
AGT DRE 01974024



A DIVISION OF
LEE & ASSOCIATES

1508 17th Street, Santa Monica, CA 90404
leewestla.com
DRE 01222000