

1333 E. 9400 S.

FOR LEASE

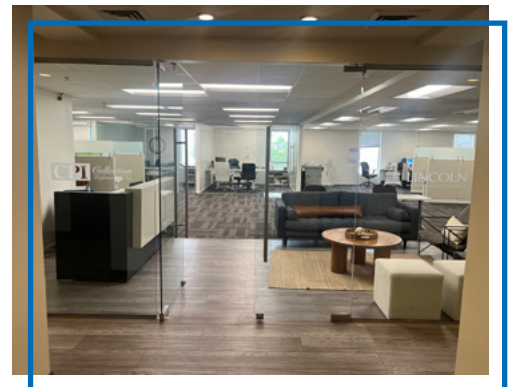


PROPERTY DETAILS

1333 E. 9400 S., Sandy, UT 84093

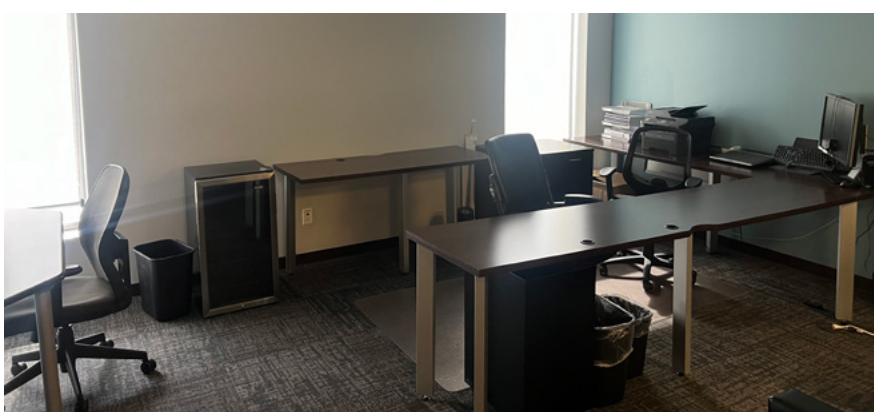
Lease Rate: \$19.95 Full Service Gross

- 5,835 RSF Total Available
 - » Divisible to 2,334 or 3,501 RSF
- Generous Tenant Improvements Available
- Newly Renovated Multi Level Covered Parking Structure, 96 Covered Stalls with Potential Access to 260 City Owned Parking Stalls Nearby
- Easy Access to Interstate 15
- Minutes to Quarry Bend and Other Retail Amenities
- Common Break Room
- Building Signage Available



PETER BLACK
pblack@newmarkmw.com
direct 801.971.9425
[View Profile](#)

**FULL SERVICE
COMMERCIAL REAL ESTATE**
312 East South Temple
Salt Lake City, Utah 84111
Office 801.456.8800
www.newmarkmw.com



NEWMARK
MOUNTAIN WEST

PETER BLACK
pblack@newmarkmw.com
direct 801.971.9425
[View Profile](#)

**FULL SERVICE
COMMERCIAL REAL ESTATE**
312 East South Temple
Salt Lake City, Utah 84111
Office 801.456.8800
www.newmarkmw.com



NEWMARK
MOUNTAIN WEST

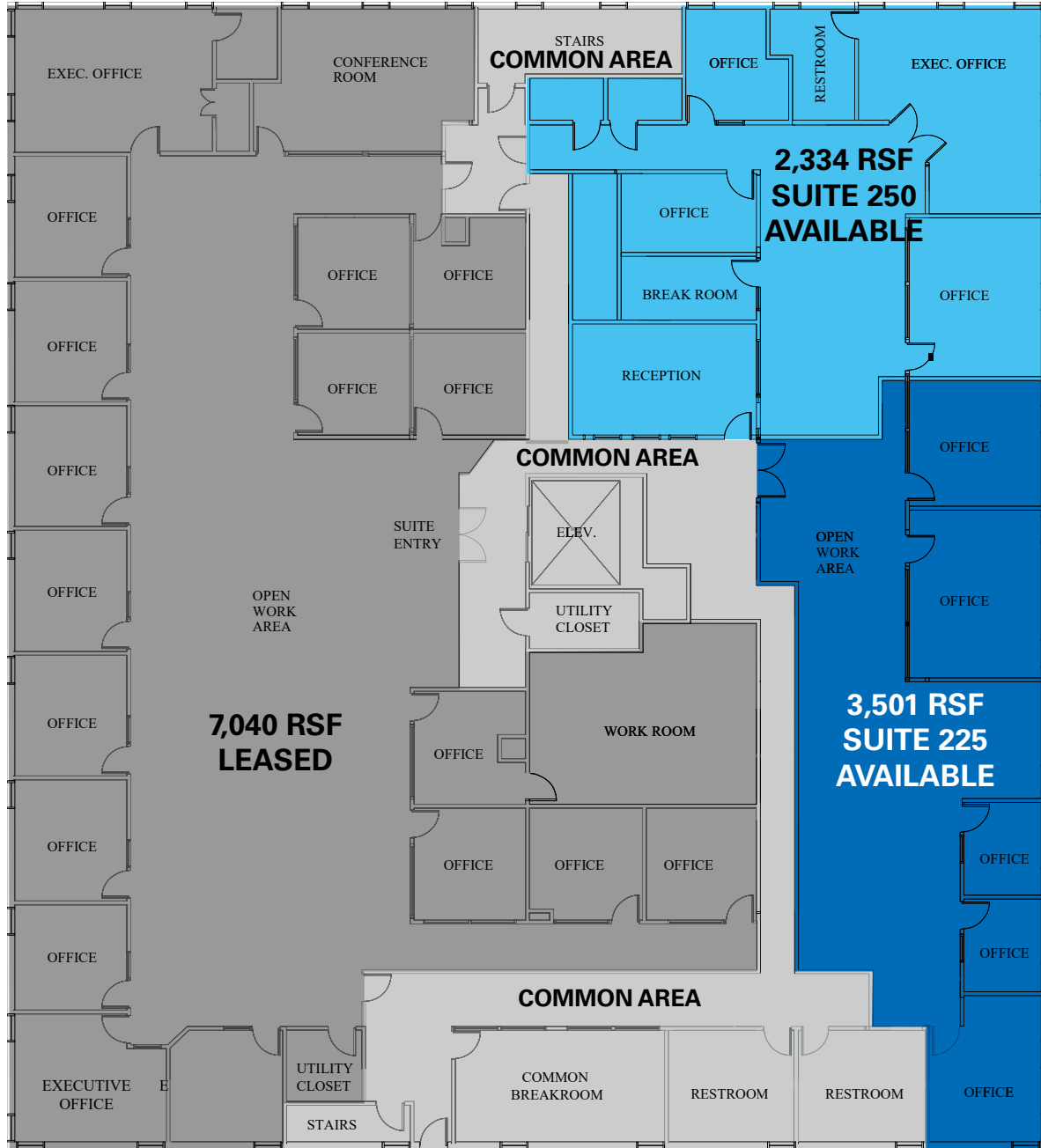
PETER BLACK
pblack@newmarkmw.com
direct 801.971.9425
[View Profile](#)

**FULL SERVICE
COMMERCIAL REAL ESTATE**
312 East South Temple
Salt Lake City, Utah 84111
Office 801.456.8800
www.newmarkmw.com

1333 E. 9400 S.

SECOND FLOOR: 5,835 RSF TOTAL

FLOOR PLAN

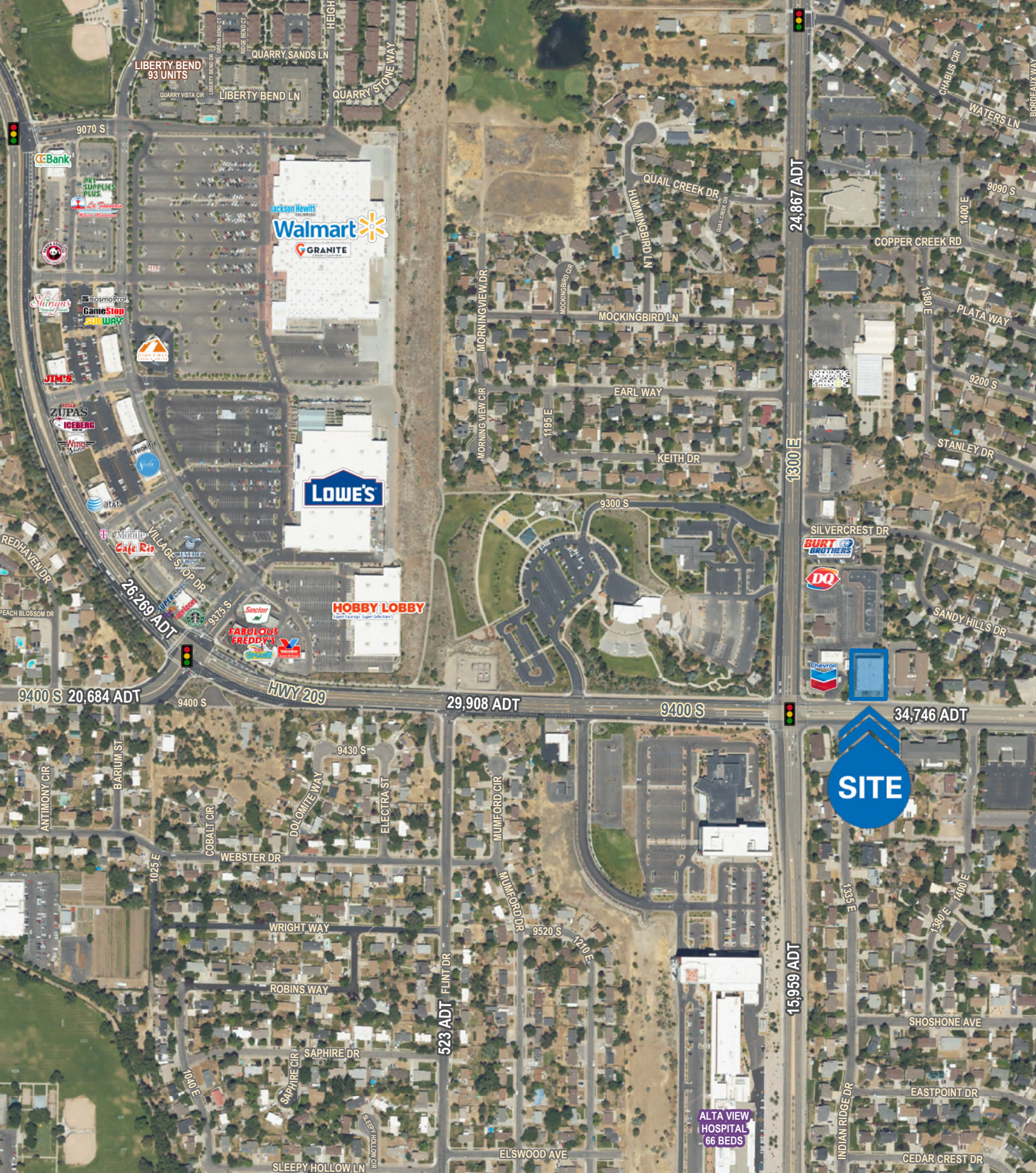


SUITE 225 **SUITE 250** **COMMON AREA**



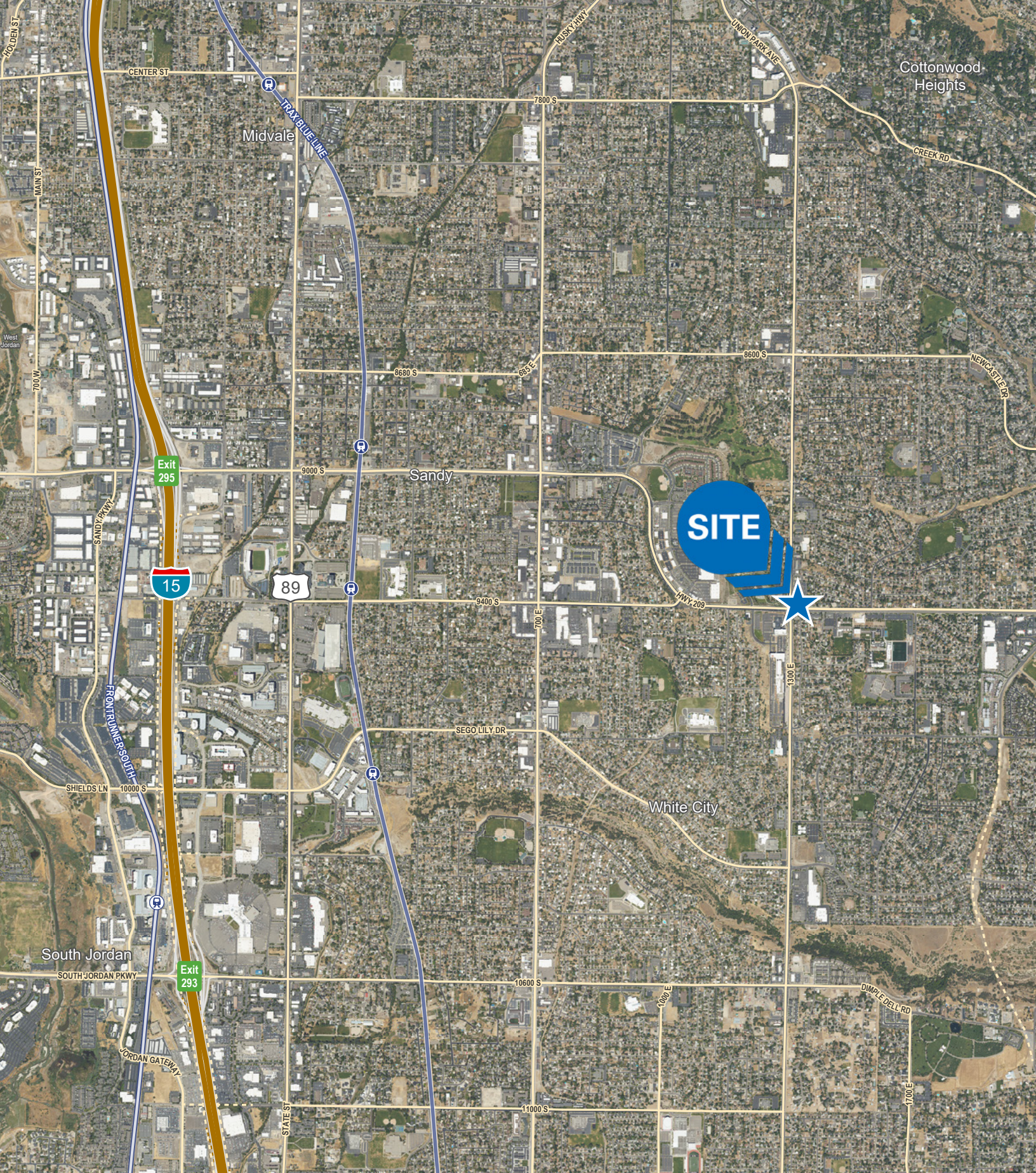
PETER BLACK
pblack@newmarkmw.com
direct 801.971.9425
[View Profile](#)

**FULL SERVICE
COMMERCIAL REAL ESTATE**
312 East South Temple
Salt Lake City, Utah 84111
Office 801.456.8800
www.newmarkmw.com



PETER BLACK
 pblack@newmarkmw.com
 direct 801.971.9425
[View Profile](#)

**FULL SERVICE
 COMMERCIAL REAL ESTATE**
 312 East South Temple
 Salt Lake City, Utah 84111
 Office 801.456.8800
www.newmarkmw.com



PETER BLACK
pblack@newmarkmw.com
direct 801.971.9425
[View Profile](#)

**FULL SERVICE
COMMERCIAL REAL ESTATE**
312 East South Temple
Salt Lake City, Utah 84111
Office 801.456.8800
www.newmarkmw.com