

LOFT OFFICE BUILDING FOR SALE - 8234 ROBINSON STREET OVERLAND PARK, KS 66204



- Located in Downtown Overland Park
- 4,000 square feet
- 5/1,000 parking
- Fully renovated with exposed ceiling
- Walking distance to restaurants and coffee shops
- Sale Price: \$999,950.00



Chuck Connealy, SIOR, CCIM

Desk: 913.789.9020

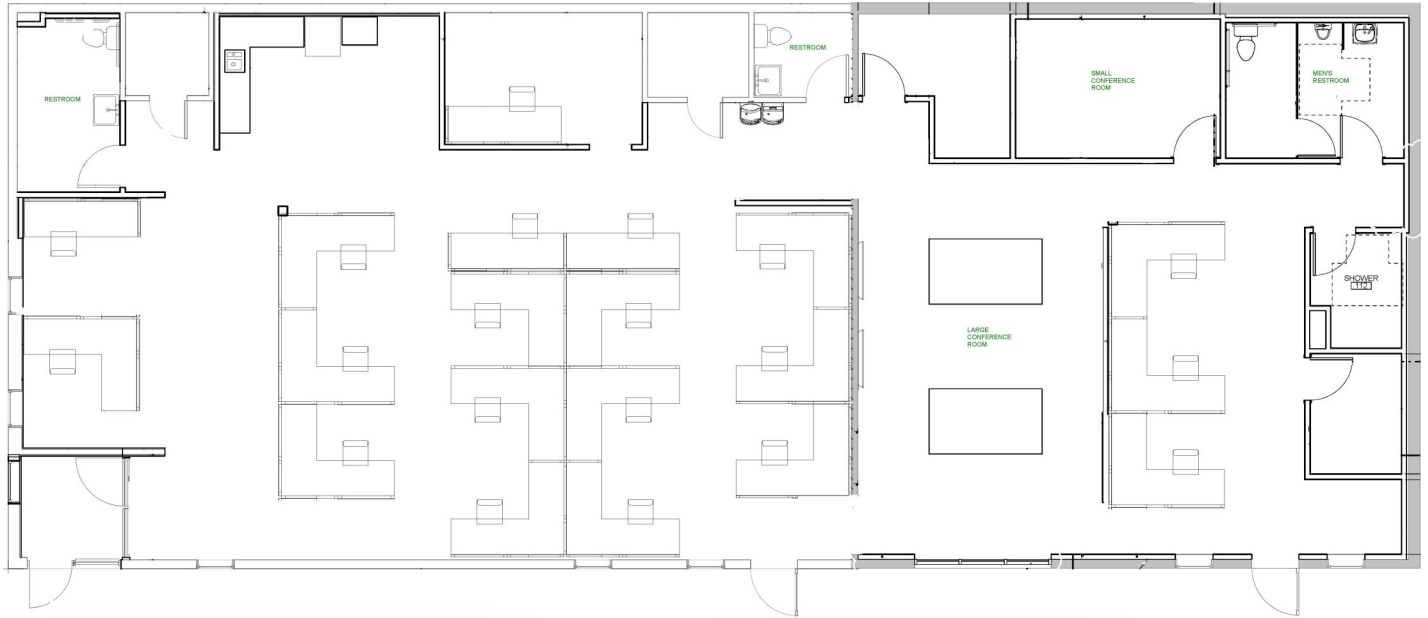
Cell: 913.515.6616

chuck.connealy@waterfordproperty.net

Information furnished regarding property is from sources deemed reliable but no warranty or representation is made as to the accuracy thereof and same is submitted subject to errors, omissions, prior sale or lease or withdrawal, without notice.

FLOOR PLAN

4,000 SF



WATERFORD
PROPERTY COMPANY LLC

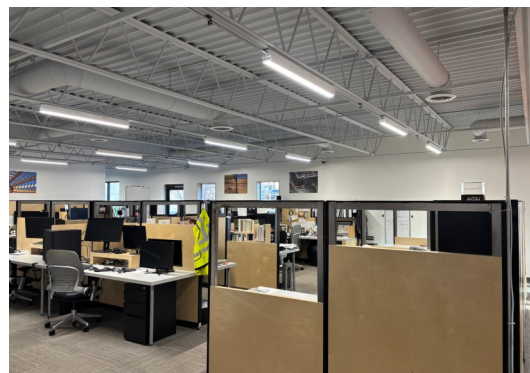
Chuck Connealy, SIOR, CCIM

Desk: 913.789.9020

Cell: 913.515.6616

chuck.connealy@waterfordproperty.net

Information furnished regarding property is from sources deemed reliable but no warranty or representation is made as to the accuracy thereof and same is submitted subject to errors, omissions, prior sale or lease or withdrawal, without notice.



WATERFORD
PROPERTY COMPANY LLC

Chuck Connealy, SIOR, CCIM

Desk: 913.789.9020

Cell: 913.515.6616

chuck.connealy@waterfordproperty.net

Information furnished regarding property is from sources deemed reliable but no warranty or representation is made as to the accuracy thereof and same is submitted subject to errors, omissions, prior sale or lease or withdrawal, without notice.