

CHECK OUT THE WESTWOOD!

THE WESTWOOD

2441/2443 Warrenville Road | Lisle IL 60532

CBRE



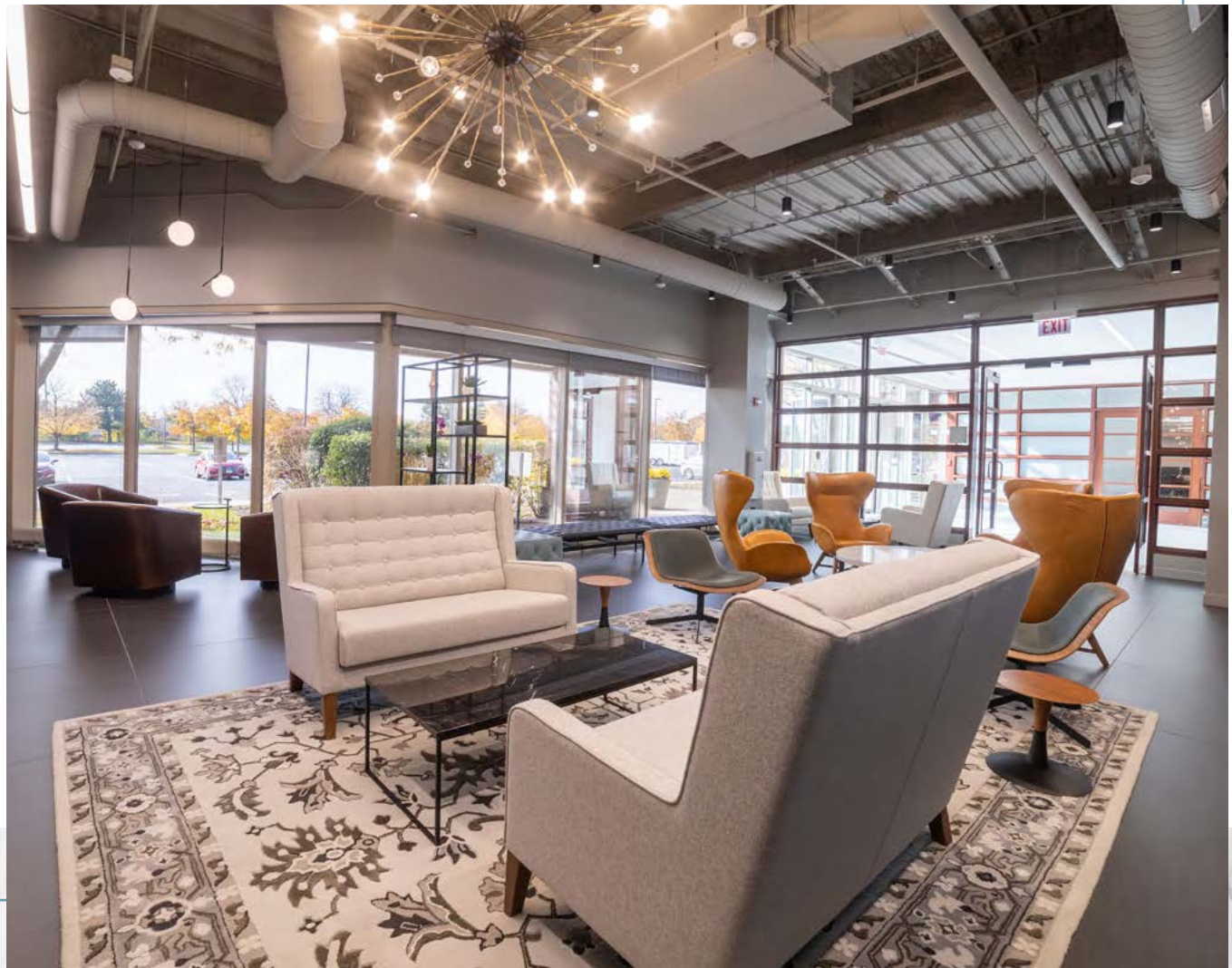
[PROPERTY VIDEO](#)

[PROPERTY WEBSITE](#)



FULLY RENOVATED WITH TOP OF CLASS AMENITIES

- I-88 Signage Available
- New lobbies
- Outstanding fitness facility
- Multiple tenant lounges
- New building deli
- First class conferencing
- Secured heated parking
- Onsite mgmt. and security
- Tollway signage
- WELL certified





AMENITIES @ THE WESTWOOD

2443 WARRENVILLE ROAD:

UPTOWN LOUNGE

New café that offers modern/contemporary seating to enjoy breakfast /lunch or a lounge to simply collaborate with coworkers

CONFERENCE CENTER

Newly constructed conference facility with state of the art technology

2441 WARRENVILLE ROAD:

DOWNTOWN LOUNGE

Enjoy fireside seating to relax or meet with others

FITNESS CENTER

Top of class fitness facility with high-end equipment and locker rooms

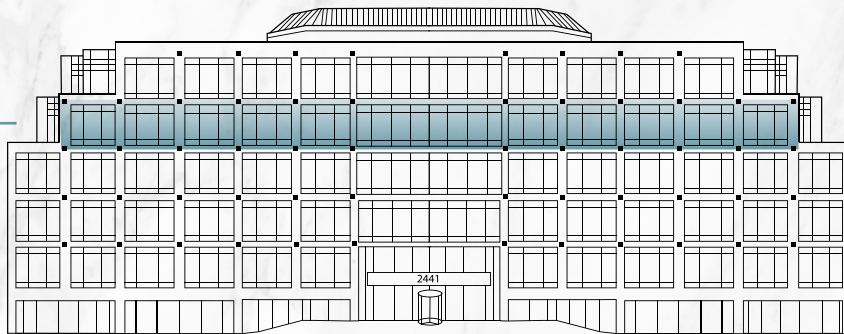
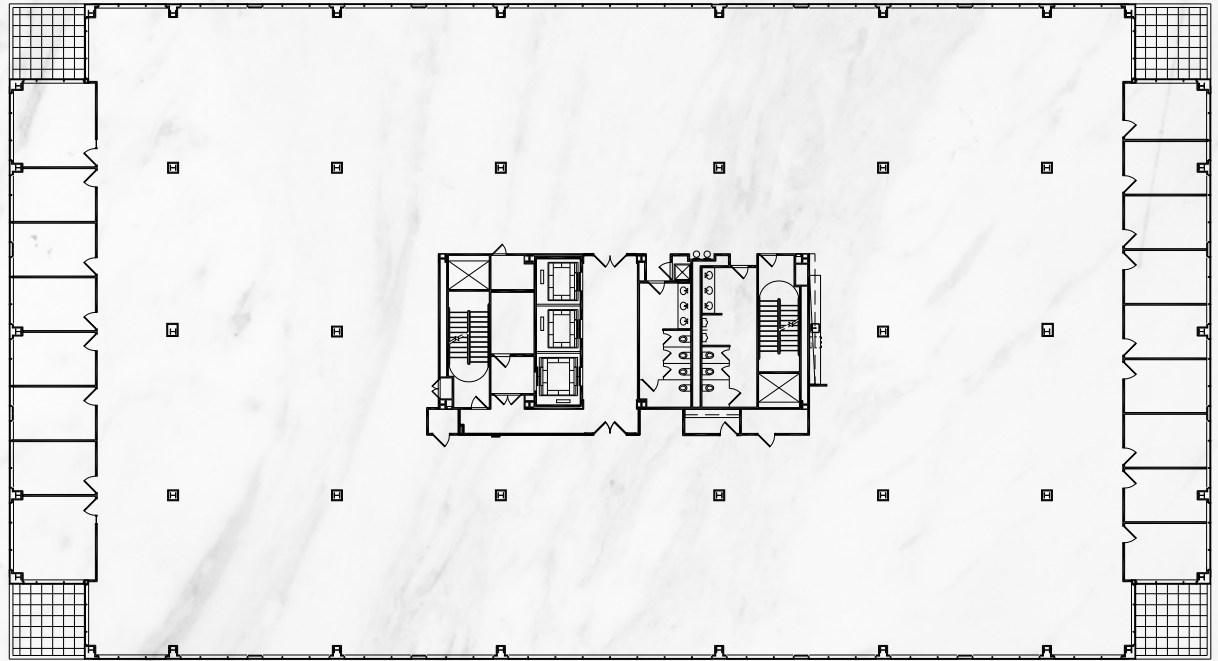
COFFEE KIOSK

Coffee kiosk in new lobby for convenient grab and go



2441 Warrenville Road

SUITE 500
27,952 RSF

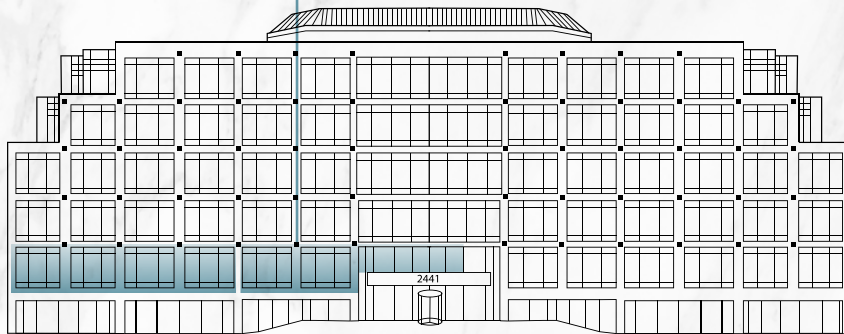


2441 Warrenville Road

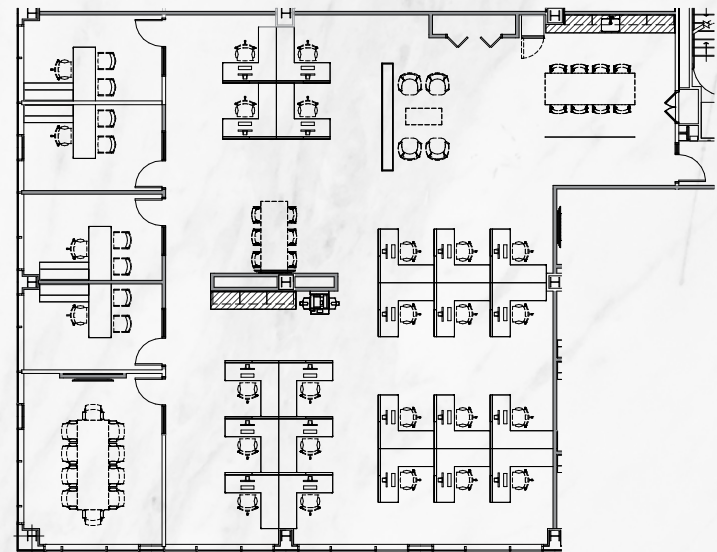
SUITE 250
4,684 RSF

SUITE 200
2,815 RSF

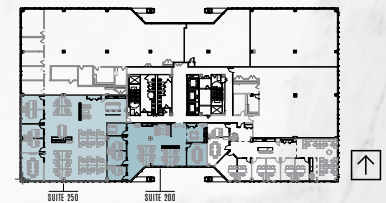
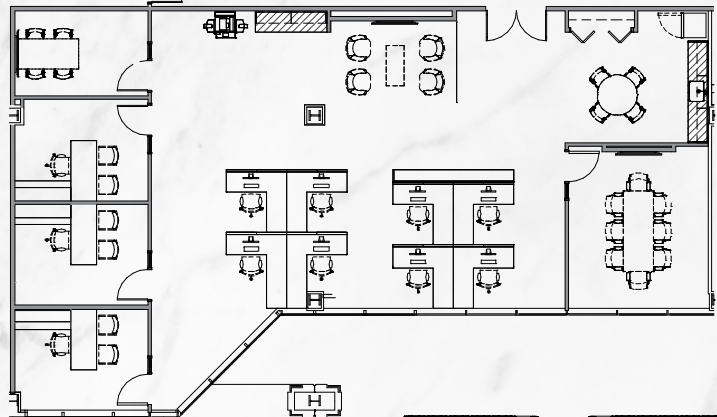
*SUITES ARE NOT FURNISHED
BUT CAN BE MADE AVAILABLE



SUITE 250

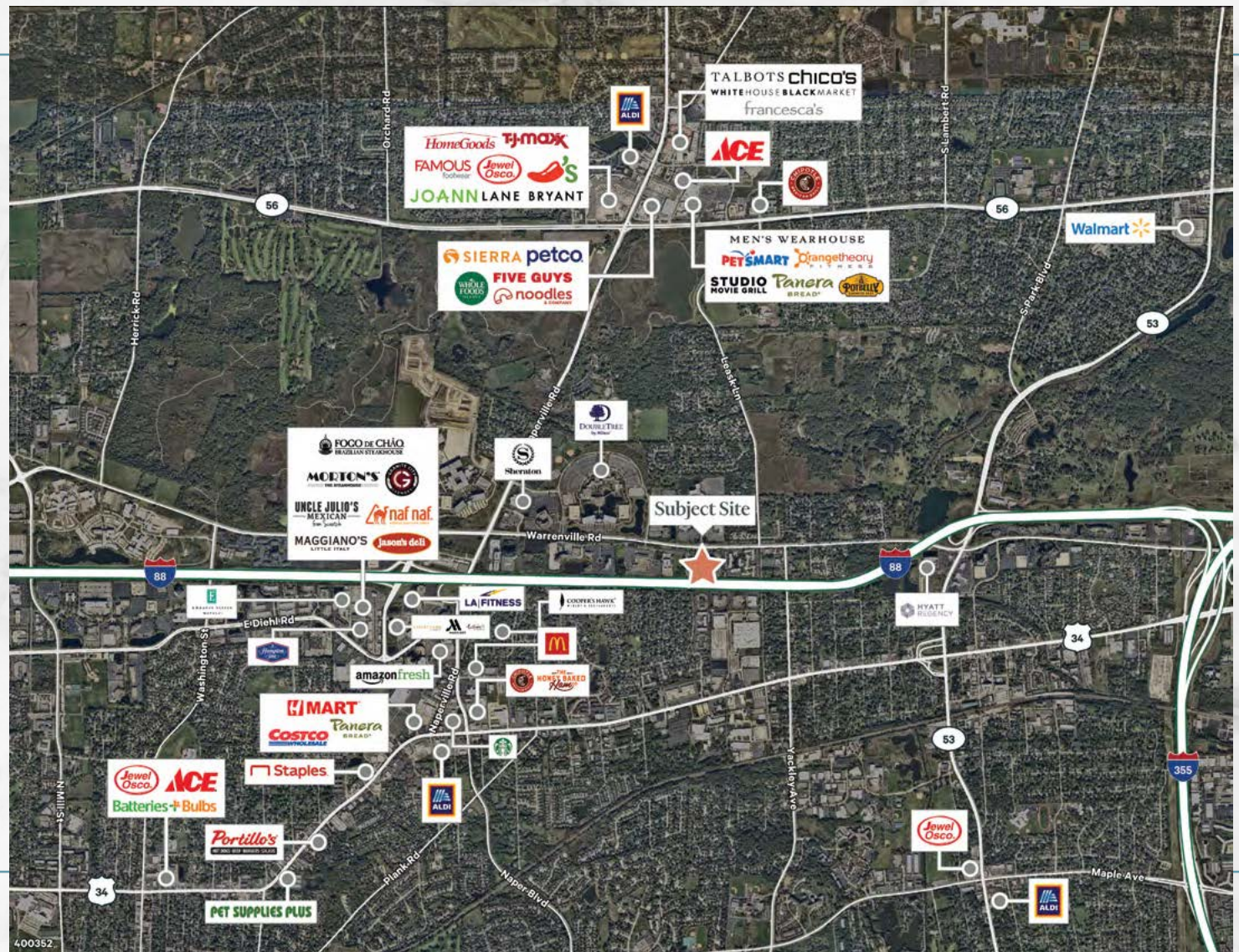


SUITE 200



ADDITIONAL SUITES ARE ALSO AVAILABLE FOR LEASE

AREA MAP



FOR MORE INFORMATION

PETE ADAMO
+1 630 573 7053
peter.adamo@cbre.com

ADAM LAWLER
+1 630 368 2610
adam.lawler@cbre.com

