



Class A Office Space For Sublease

2760 W Excursion Lane Meridian, ID 83642

CLASS A OFFICE SPACE FOR SUBLEASE:

- Excellent location at Ten Mile & I84
- Building amenities include large meeting room on first floor
- Available immediately
- Sublease term through July 31, 2031

CONTACT:

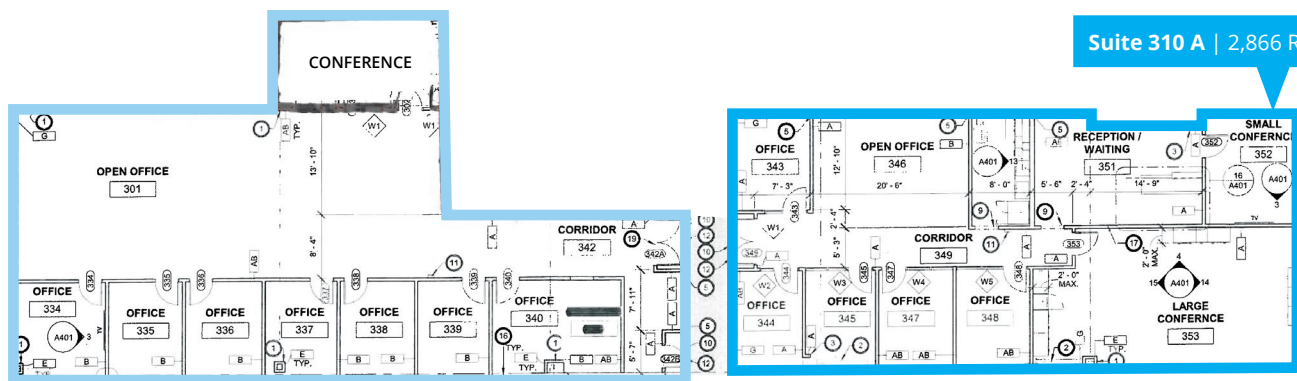
Lew Manglos, CCIM, SIOR
Investment Brokerage
Services | Partner
+1 208 484 9833
lew.manglos@colliers.com

755 W. Front Street, Suite 300
Boise, ID 83702
+1 208 345 9000
colliers.com/idaho

Floor Plans

PROPERTY INFORMATION

Suite	Size	Lease Rate
310A	2,866 RSF	\$21.50/SF/YR NNN
310B	3,135 RSF	\$21.50/SF/YR NNN



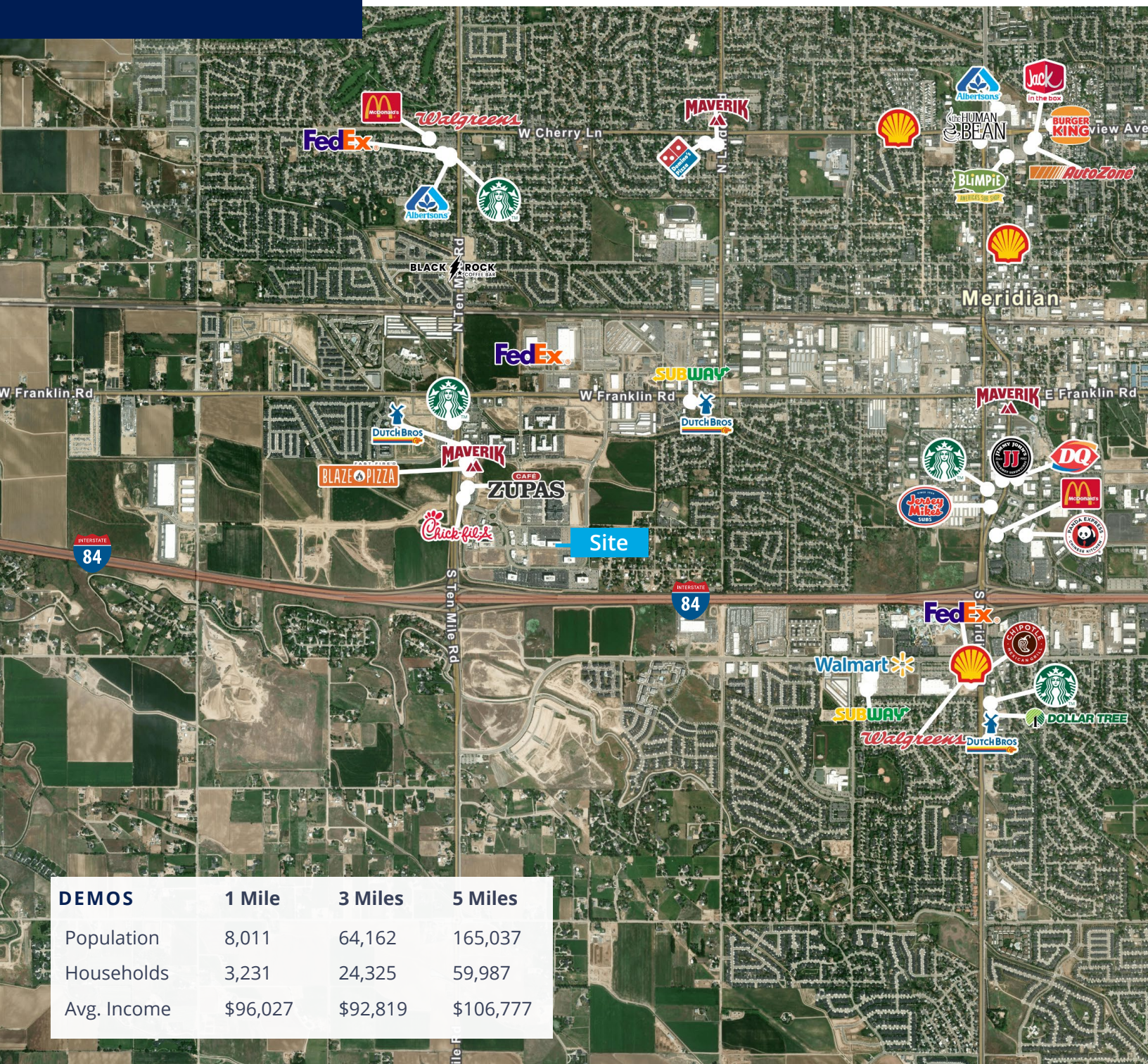
Suite 310 A | 2,866 RSF

Suite 310 B | 3,135 RSF

Property Gallery



Location



DEMOS

1 Mile

3 Miles

5 Miles

Population	8,011	64,162	165,037
Households	3,231	24,325	59,987
Avg. Income	\$96,027	\$92,819	\$106,777



755 W. Front Street, Suite 300
Boise, ID 83702
+1 208 345 9000
colliers.com/idaho

This document has been prepared by Colliers for advertising and general information only. Colliers makes no guarantees, representations or warranties of any kind, expressed or implied, regarding the information including, but not limited to, warranties of content, accuracy and reliability. Any interested party should undertake their own inquiries as to the accuracy of the information. Colliers excludes unequivocally all inferred or implied terms, conditions and warranties arising out of this document and excludes all liability for loss and damages arising there from. This publication is the copyrighted property of Colliers and /or its licensor(s). © 2026. All rights reserved. This communication is not intended to cause or induce breach of an existing listing agreement. Colliers Paragon, LLC.