



Windsor Professional Center

9715 Northeast Pkwy, Suite 200 | Matthews, NC 28105



Available for Sale or Lease

+/- 1,450 SF Office Suite in Matthews, NC

Property Overview

Windsor Professional Center

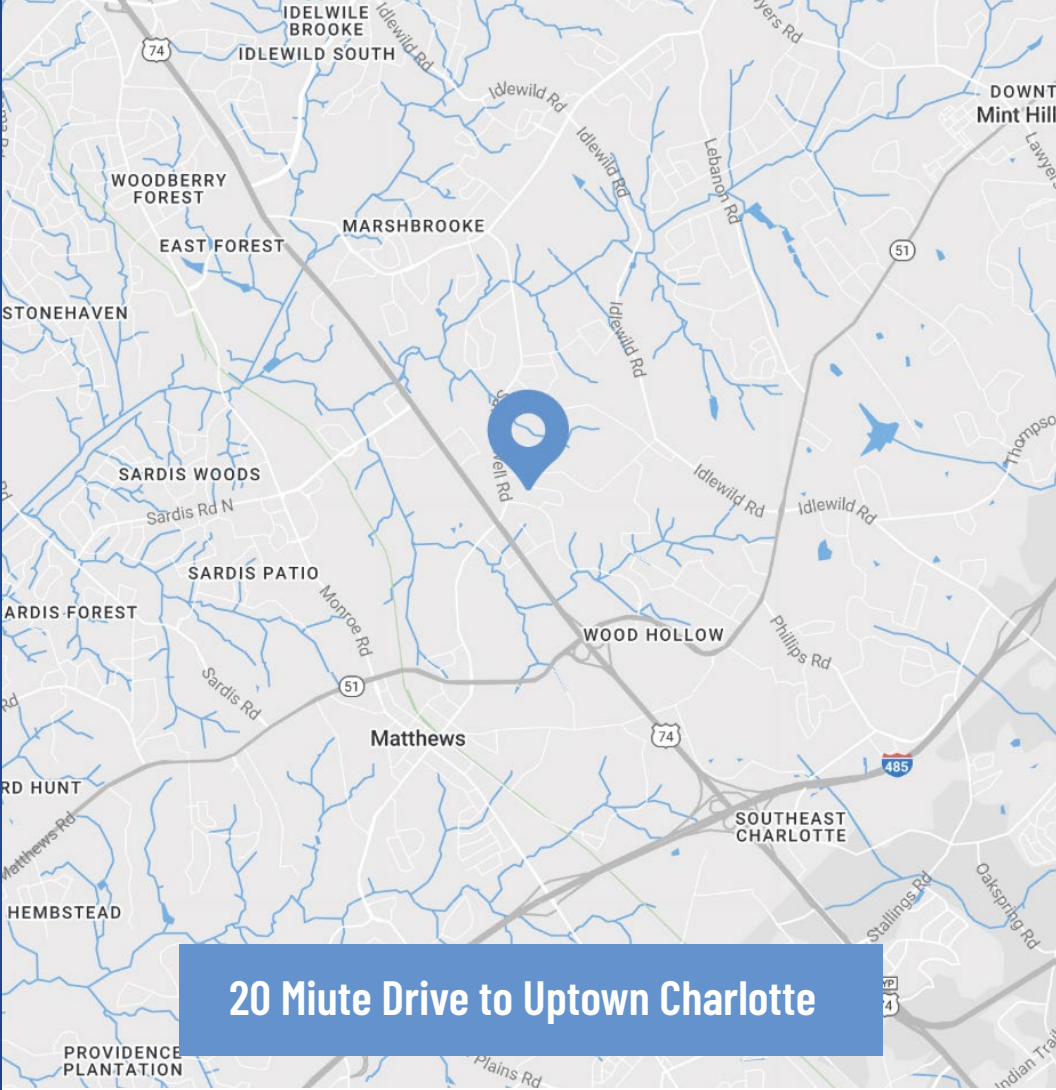
Available for Sale or Lease

+/- 1,450 SF office condo available for sale or lease at 9715 Northeast Parkway, located in the highly sought-after Windsor Professional Center. This turnkey office condo presents a rare ownership opportunity in a prime Matthews location, with immediate access to US-74 (Independence Blvd), I-485, and just 20 minutes from Uptown Charlotte.

The office suite offers a functional layout ideal for a variety of professional users, such professional services, medical/therapy, financial services, real estate, insurance, or any small business seeking a polished office environment. The well-maintained suite features four private offices, a large reception area, one private restroom, kitchenette, and ample on-site parking, all in move-in ready condition. An excellent opportunity for owner-users or investors seeking space for professional services.

Property Details

Address	9715 Northeast Pkwy, Suite 200 Matthews, NC 28105
Square Footage	+/- 1,450 SF Available for Sale or Lease
Use	Office
Parcel	19343137
Parking	On-site Parking
Traffic Counts	Hwy 74 52,000 VPD I-485 77,500 VPD
Lease Rate	Call for Leasing Details
Sale Price	Call for Pricing



20 Miute Drive to Uptown Charlotte

Demographics

RADIUS	1 MILE	3 MILE	5 MILE
2025 Population	4,630	59,516	188,014
Avg. Household Income	\$123,499	\$112,069	\$132,201
Median Household Income	\$101,248	\$86,207	\$93,747
Households	1,899	25,228	74,233
Daytime Employees	5,574	32,260	62,913

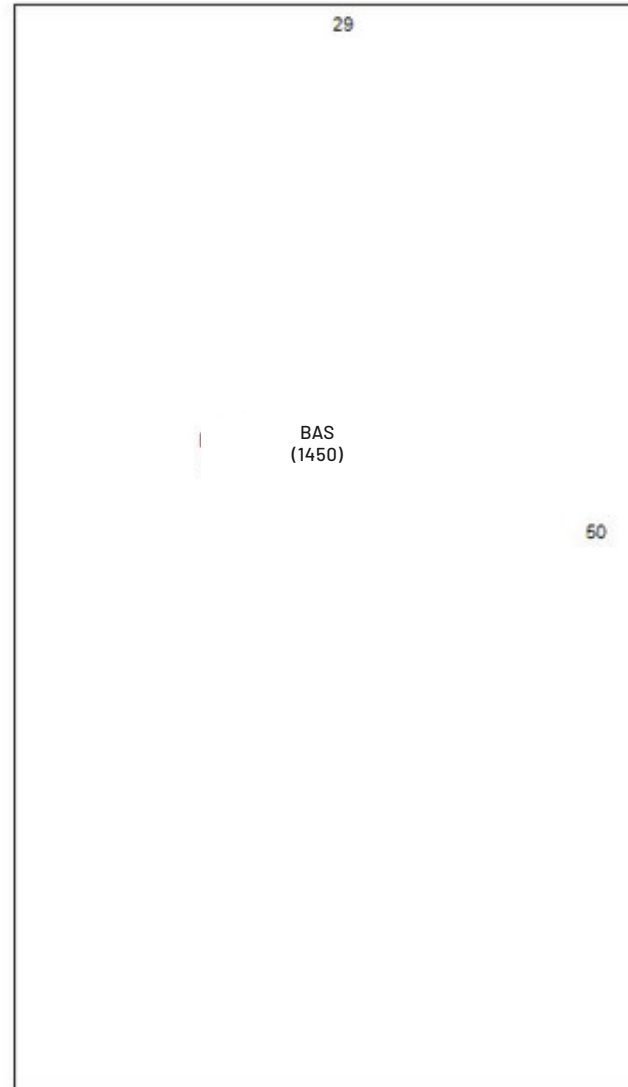
Available

Suite 200

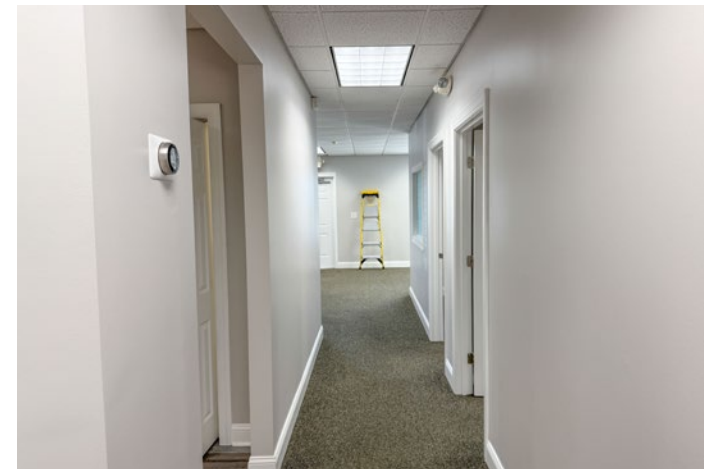
+/- 1,450 SF



Virtual Tour



Property Photos



Market Overview

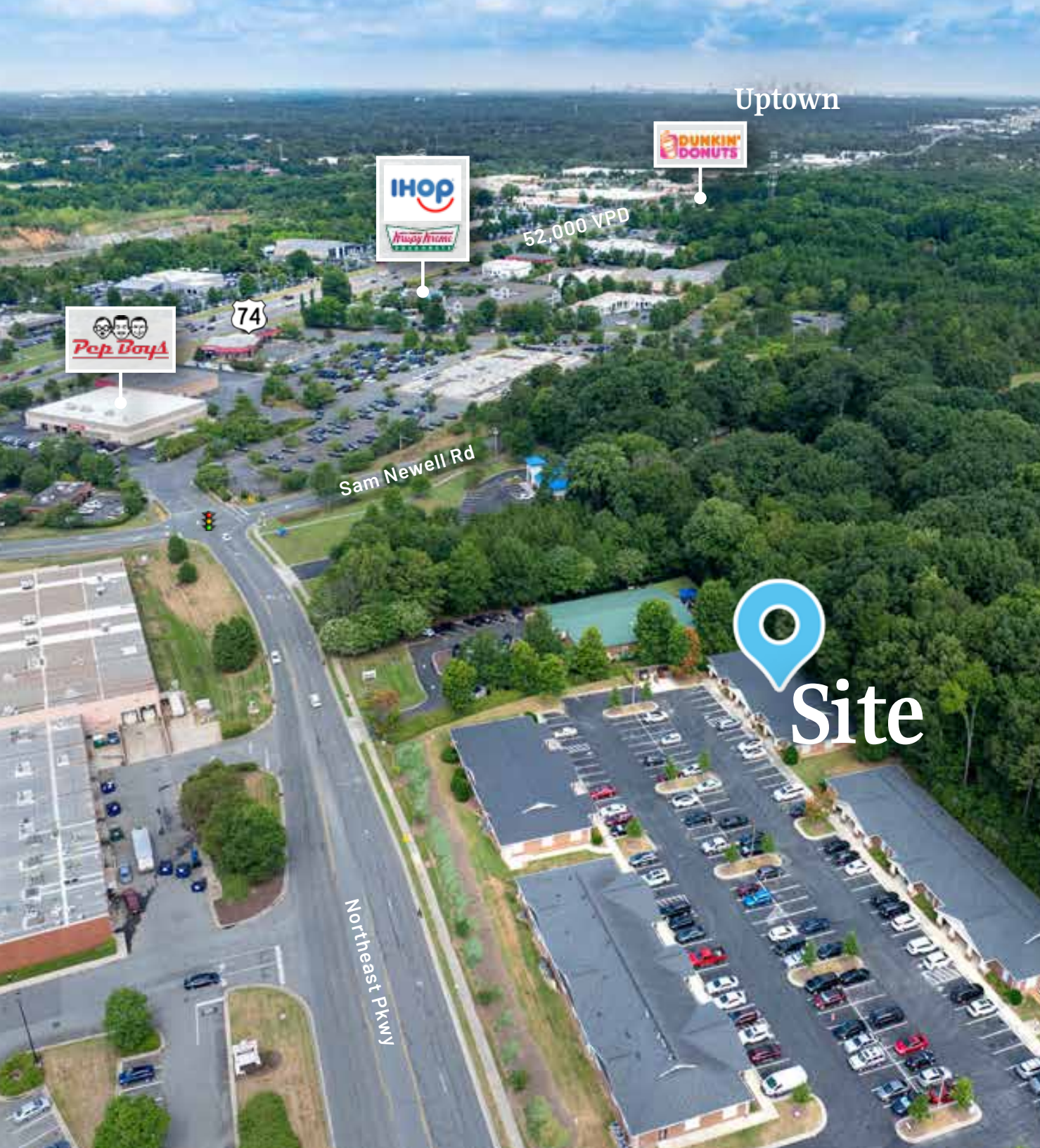


Matthews

North Carolina

Matthews, situated between Charlotte and Union County, is an ideal business location with a mix of city amenities and small-town charm. Matthews is less expensive for first-time business owners than other Charlotte submarkets, this has created a new hub of activity. Recognized for safety and family appeal, it consistently ranks among the best places to live. Recently an influx of retailers have moved into the neighborhood including: Mac's Speed Shop, Temple Mojo Growler Shop, Artful Gourmet Burgers, Umani Sushi, Seaboard Brewing, Jekyll and Hyde Brewpub. With its affordability compared to other Charlotte submarkets, is becoming a smart choice for businesses, set to evolve further with additions like Ames Station in Downtown





Uptown

Contact for Details

Michelle L. Wellmon

(704) 885-2774

michelle@thenicholscompany.com



Website

www.TheNicholsCompany.com

Phone

Office (704) 373-9797

Fax (704) 373-9798

Address

1204 Central Avenue, Suite 201

Charlotte, NC 28204

This information has been obtained from sources believed to be reliable. While we do not doubt its accuracy, we have not verified it and make no guarantee, warranty or representation to independently confirm its accuracy and completeness.