



## WHITE OAK LOGISTICS CENTER

7915 White Road SW, Austell, Cobb County, GA

FOR LEASE

±159,139 - 318,279 SF

BUILDING 200

2 BUILDING

CLASS A DEVELOPMENT

READY FOR OCCUPANCY

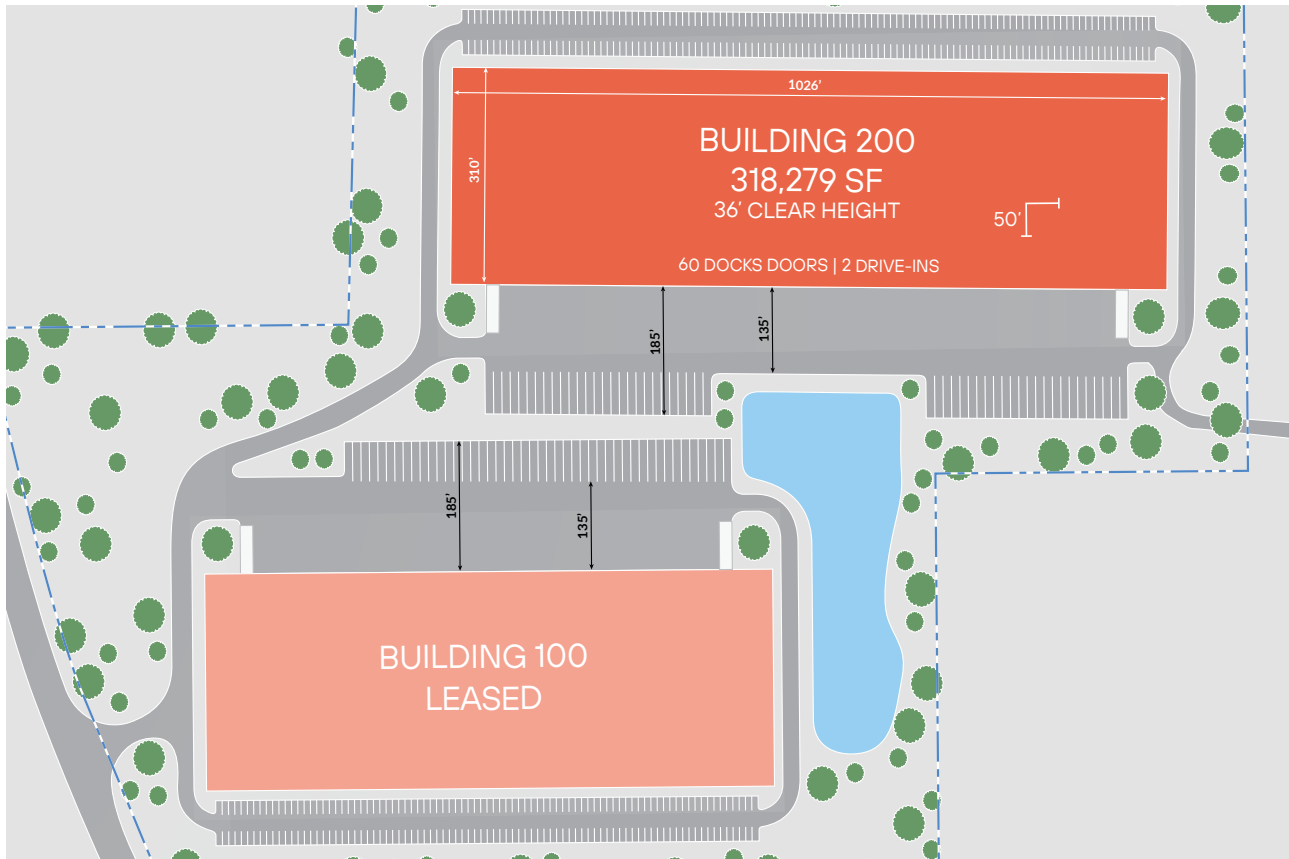


Leasing by:



LEED CERTIFIED





SPECIFICATIONS

BUILDING 200	
Available SF	±159,139 - 318,279 SF
Building Dimensions	1,026' x 310'
Office SF	±2,526 SF
Clear Height	36'
Column Spacing	50' x 54'
Dock Doors	60
Drive-ins	2
Pit Levelers	2
Truck Court Depth	135' - 185'
Car Spaces	196
Trailer Stalls	48
Foundation	7" unreinforced slab 4000 PSI
Power	2720A, 277/480 volt
Roofing	45 MIL TPO with 15 year warranty
Fire Protection	ESFR



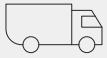


## LOCATION HIGHLIGHTS



### INTERSTATE 20 WEST SUBMARKET

Located within the Interstate 20 West Submarket



### UNPARALLELED CONNECTIVITY

to major transportation arteries



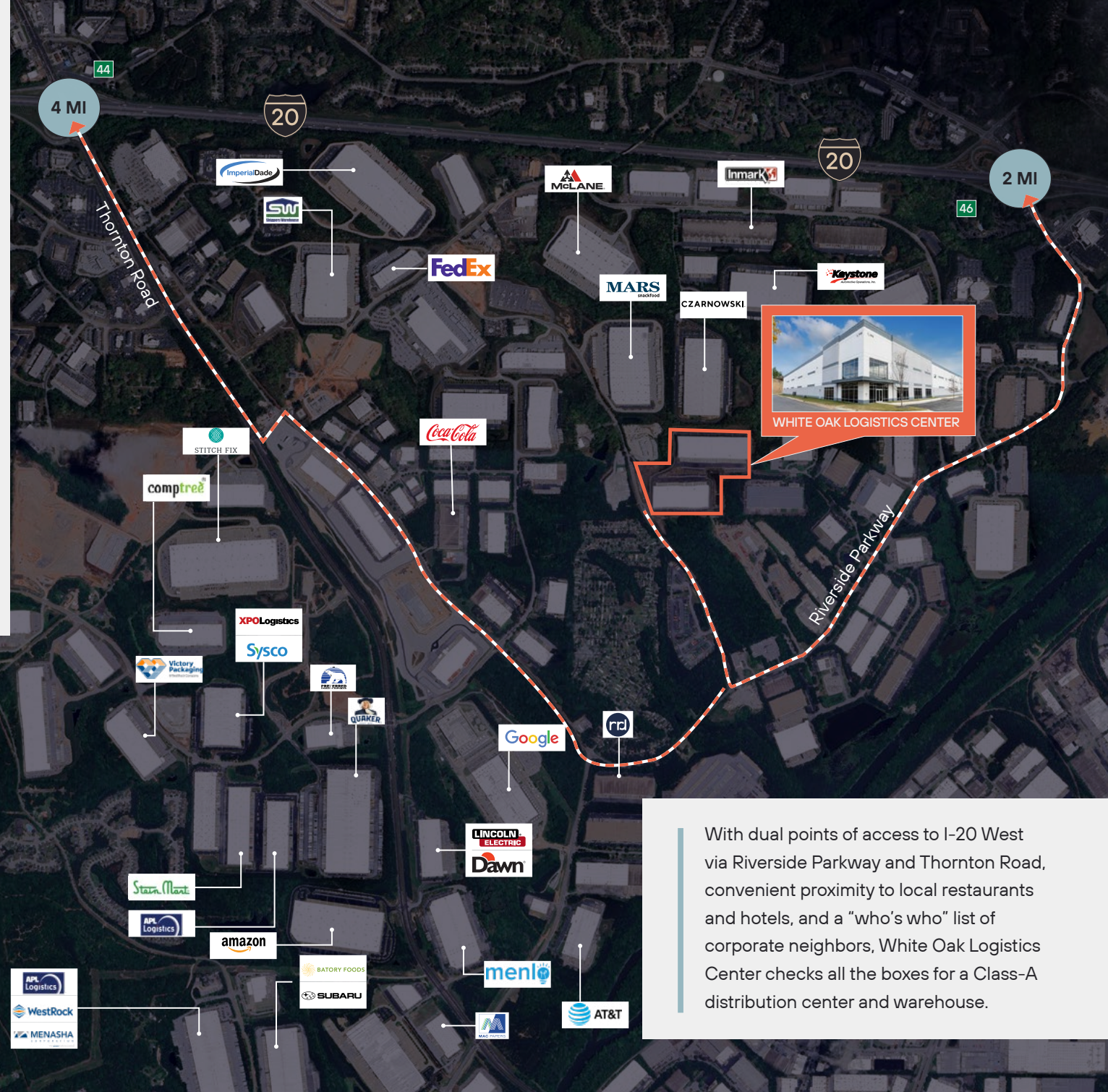
### ABUNDANT LABOR POOL

Access to Cobb County's abundant labor pool



### NEIGHBORING INDUSTRY GIANTS

such as FedEx, UPS, Amazon, Google, and many more.



WHITE OAK LOGISTICS CENTER

With dual points of access to I-20 West via Riverside Parkway and Thornton Road, convenient proximity to local restaurants and hotels, and a "who's who" list of corporate neighbors, White Oak Logistics Center checks all the boxes for a Class-A distribution center and warehouse.



## DRIVING DISTANCES

### I-20 (Exit 46)

2 miles

### I-285 (Exit 51A-B)

6 miles

### UPS SMART HUB

6 miles

### NORFOLK SOUTHERN INTERMODEL (AUSTELL)

10 miles

### I-75 (Exit 58)

12.5 miles

### NORFOLK SOUTHERN INTERMODEL (ATLANTA)

13 miles

### DOWNTOWN ATLANTA

13.3 mile

### I-85 (EXIT 71)

18.5 miles

### CSX RAIL

25 miles

### ATLANTA INTERN. AIRPORT

18.5 miles



For leasing information, contact:

**JR WRIGHT**

[jrwright@strategicrepartners.com](mailto:jrwright@strategicrepartners.com)

404.836.4841

**BOB BURDELL**

[bburdell@strategicrepartners.com](mailto:bburdell@strategicrepartners.com)

404.502.8837

**JOHN GOSNELL**

[jgosnell@strategicrepartners.com](mailto:jgosnell@strategicrepartners.com)

404.563.0608



This is not an offer or acceptance of an offer to lease space. A lease will only be offered or made in a written agreement signed by landlord. No representation or warranty of any kind is made by landlord unless set forth in a written definitive lease executed by the landlord.