

FOR LEASE: PEARL DISTRICT CREATIVE COMMERCIAL SPACES

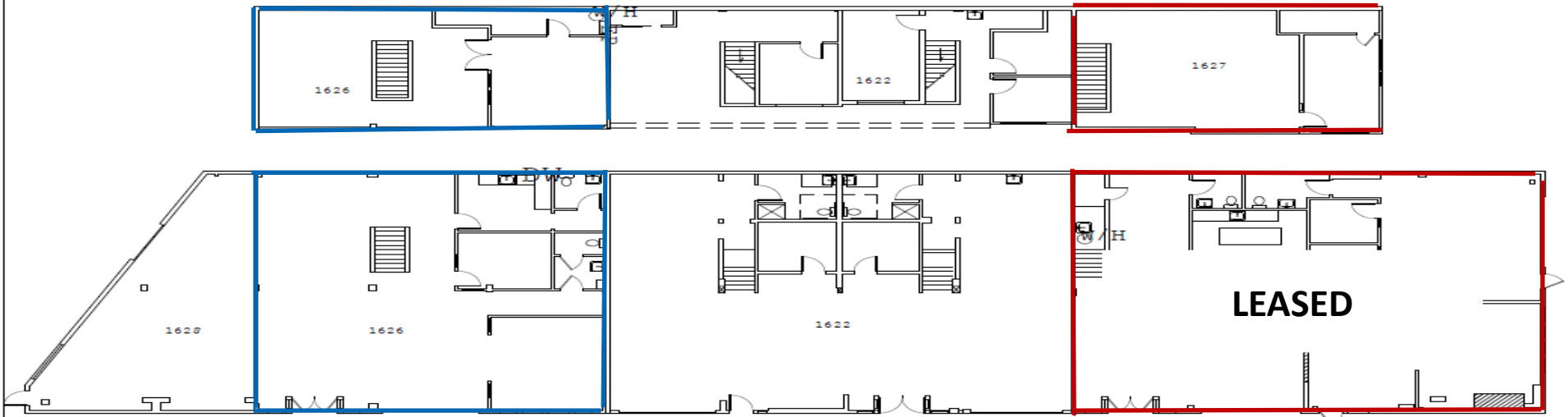
Raleigh Square - NW 14th Avenue and NW Raleigh Street - Portland Oregon



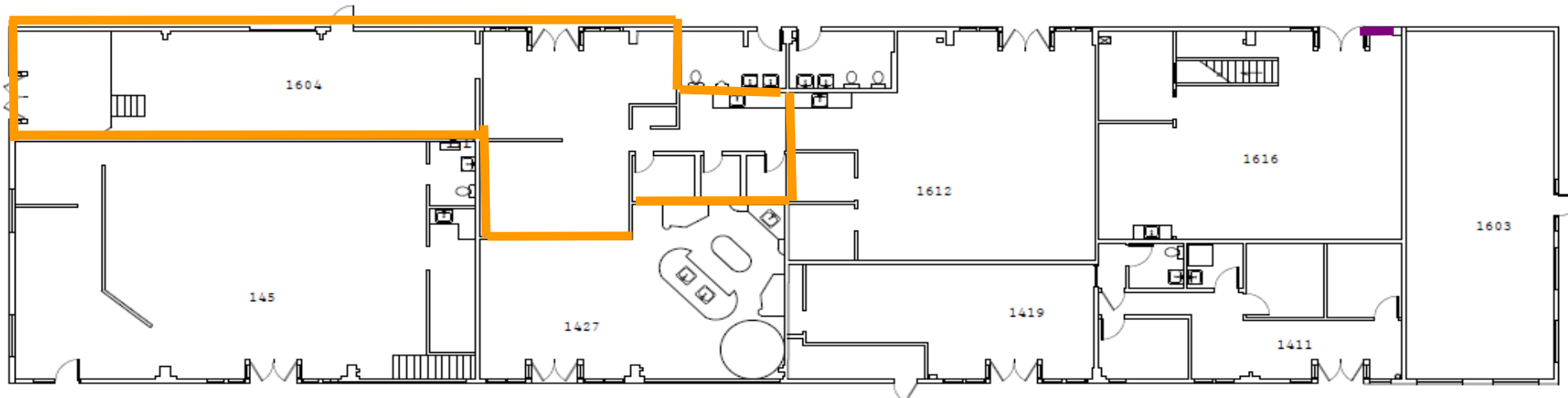
COMMERCIAL
BLACK

Maximizing Value with Market Knowledge

Building Plan & Vacancies



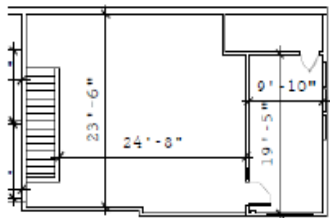
1 BLDG PLAN 1622-1628
A1.0 SCALE:N.T.S



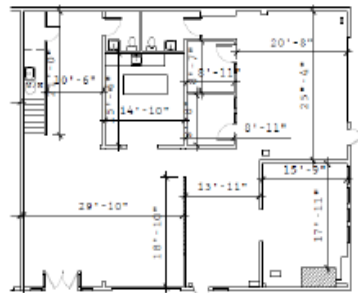
1 BLDG PLAN 1411-1616
A1.0 SCALE:N.T.S

Available

- Suite: **1626 NW Raleigh Street – Direct Lease**
- RSF: **3,262 RSF**
- Rate: **\$21.00 NNN**
- Nets: **\$9.64 Per RSF**
- Available: **Immediately**
- Features: **Open layout with mezzanine level**
High Ceilings
Mix of open and private offices
Roll up door and exposed old growth beams
Great window line—natural light
Ideal headquarters for private company



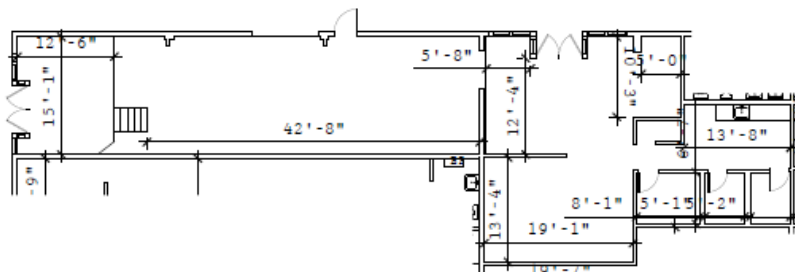
2 MEZZANINE 1627
A1.0 SCALE: 1/16" = 1'-0"



1 FLOOR PLAN SUITE 1627
A1.0 SCALE: 1/16" = 1'-0" 3,804 USP/3,861 RSF

Available

Suite: 1604 NW 15th Avenue
RSF: 1,925
% SHARE: 7.78%
Rate: \$19.50 NNN
Nets: \$9.64 Per RSF
Available: Immediately
Features: Open layout
High Ceilings
Mix of private office and open area
Kitchenette
Old growth beams
Sky lights



1 FLOOR PLAN SUITE 1604
A1.0 SCALE: 1/16 = 1'-0" 1,821 USE/1,848 RSF

Raleigh Square offers a unique opportunity to have creative space in NW Portland /Pearl District.

- ⇒ Creative office space in ultra urban location
- ⇒ Area hub for restaurants, shopping, and entertainment
- ⇒ Walking distance to street car line and close access to freeways
- ⇒ High ceilings and exposed center cut old growth beams
- ⇒ Abundant natural light
- ⇒ Secure facility
- ⇒ Move in ready, but Landlord willing to make improvements for new tenants
- ⇒ Ample on site parking

Please direct all inquiries to :

John Gibson - Licensed Oregon Principal Broker
OR# 971000078
2393 SW Park Place #110
Portland, OR 97205
503.860.3267
john.gibson@commercialblack.com
www.commericalblack.com

