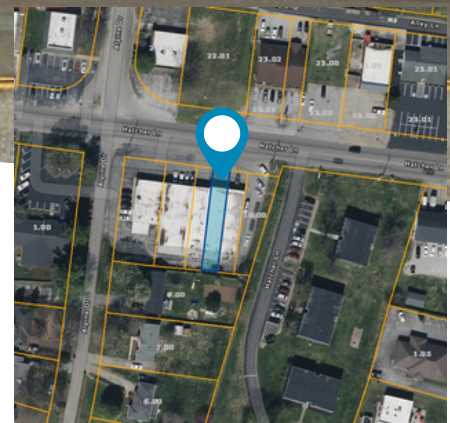


KW  
Commercial  
Middle  
Tennessee



# FOR SALE

1300 Hatcher Ln Ste B

Columbia, TN 38401 | Maury County

Great location that provides  
convenient access and in  
close proximity to hospital and  
downtown Columbia



Contact Us

**JENNY ADCOX**

C: 931-628-0735 | O: 615-302-5152

[jennyadcox@kwcommercial.com](mailto:jennyadcox@kwcommercial.com)



Each office is independently owned and operated.

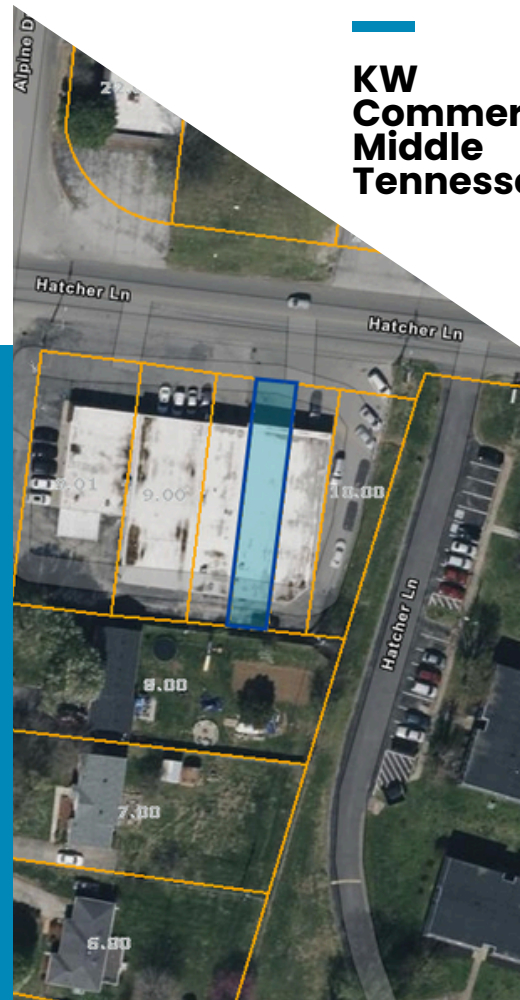
Priced at

**\$400,000**

**KW  
Commercial  
Middle  
Tennessee**

## FEATURES

- 2,400 sq ft Building
- CD-4C Zoning
- Prime Location
- High Traffic Density
- Leased for 1 Year



## JENNY ADCOX

**Principal Broker**

**5083 Main Street Suite 1,  
Spring Hill, TN 37174**

With over a decade of marketing and project development expertise, I've honed the skills needed to drive successful strategies and solutions within the commercial real estate sector. Whether working with seasoned investors or first-time buyers, I understand the importance of collaboration and overcoming challenges to achieve their goals.

I thrive on leveraging available resources to maximize results, believing strongly in the power of forming effective teams. As our industry evolves, my dedication to people remains steadfast, and I eagerly anticipate many more years of growth and impact. Let me know if you are interested in pursuing an opportunity in this industry.

"Careers Worth Having, Businesses Worth Owning, Lives Worth Living."