

For Lease

Professional Cir. & Double R Blvd.



LOGIC



10471 Double R Blvd.
Reno, NV 89521

Landon Gonzalez
Vice President
775.741.6397
lgonzalez@logicCRE.com
S.0179599.LLC

Listing Snapshot



\$2.10 PSF MG
Base Lease Rate
+ \$700 per mo. CAM



± 981 SF
Available Square Footage

Property Highlights

- Three (3) private offices
- Reception area
- Common restrooms
- Located in the desirable South Reno submarket
- Furniture to be made available

Demographics

	1-mile	3-mile	5-mile
2025 Population	10,372	61,990	106,737
2025 Average Household Income	\$157,010	\$165,610	\$151,267
2025 Total Households	4,651	25,333	43,796



Aerial



Venues



Hospitals



Government



Office/Industrial



Parks



Schools



Golf Courses



Retail

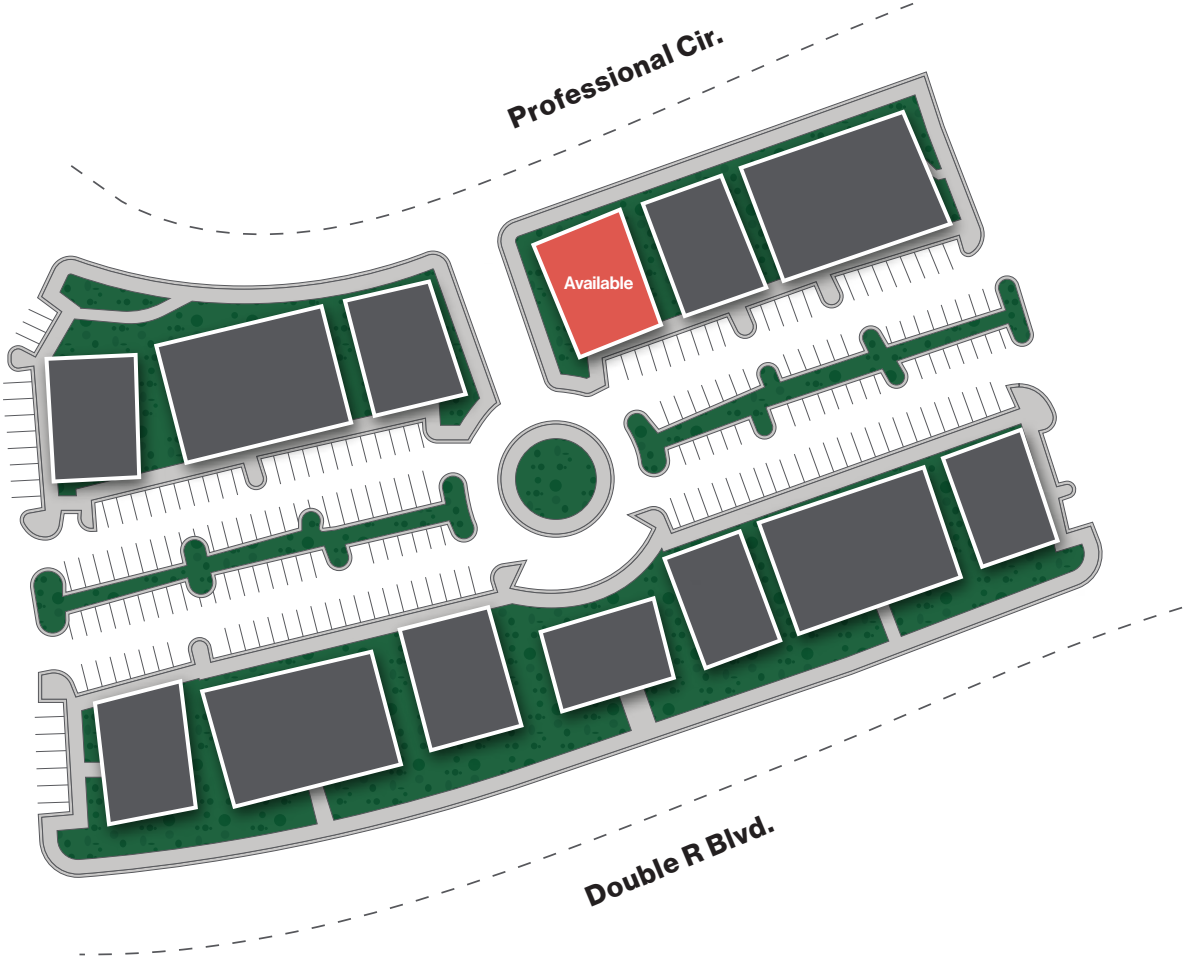


Hotels / Casinos

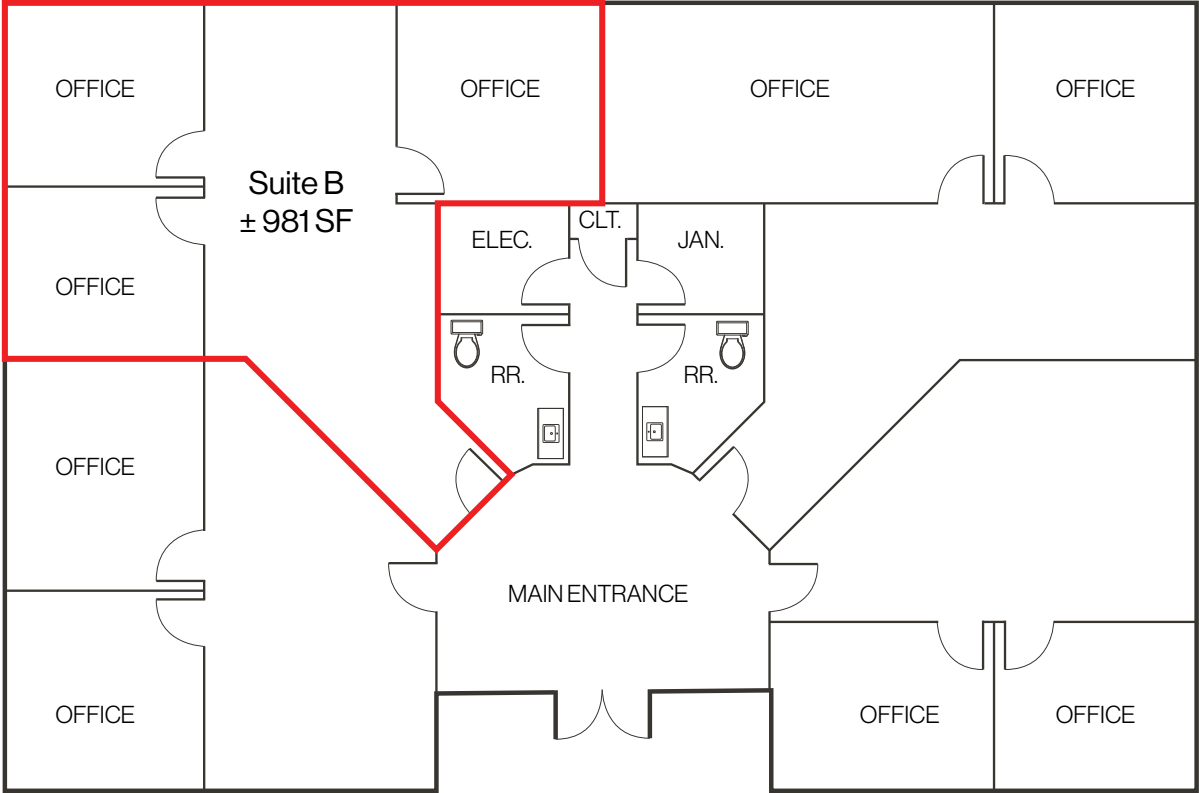


Airports



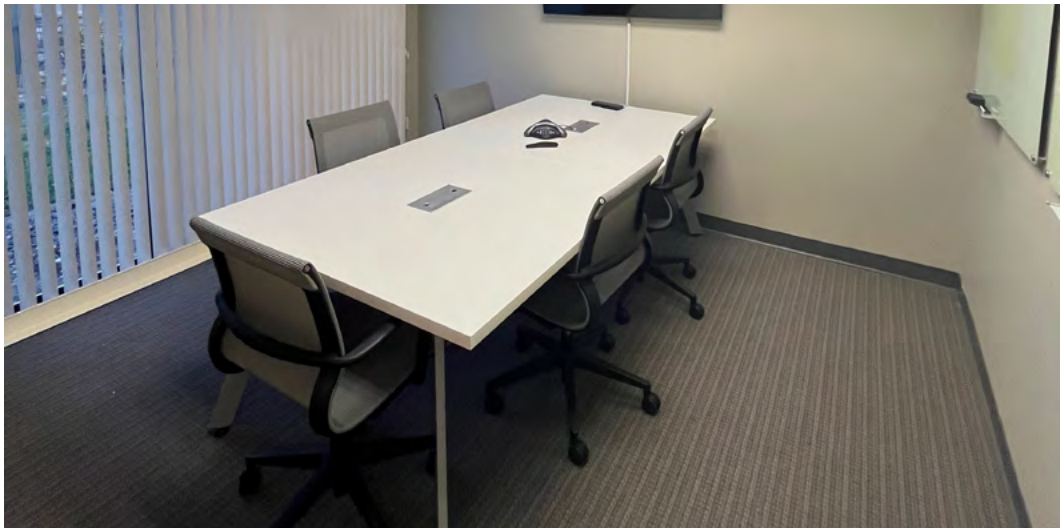


Floor Plan



[Click for a Virtual Tour](#) 

Property Photos



LOGIC Commercial Real Estate

Specializing in Brokerage and Receivership Services



Join our email list and
connect with us on LinkedIn

The information herein was obtained from sources deemed reliable; however LOGIC Commercial Real Estate makes no guarantees, warranties or representation as to the completeness or accuracy thereof.

For inquiries please reach out to our team.

Landon Gonzalez
Vice President
775.741.6397
lgonzalez@logicCRE.com
S.0179599.LLC