

680 BROADWAY

Between Great Jones and Bond Streets

NOHO
MANHATTAN | NY



LOCATION

Between Great Jones and Bond Streets

ASKING PRICE

\$13,500,000

BLOCK/LOT

530/6

LOT DIMENSIONS

Approx. 29' x 130'

TOTAL GROSS SQ. FT.

Approx. 13,913

STORIES

4

ZONING

M1-5/R9A

COMMERCIAL

2

RESIDENTIAL

4

TAX CLASS

2A

TAXES (24)

\$246,463

PROPERTY DESCRIPTION

- 100% Free Market
- Prime Noho Location
- Rear retail space has private entrance off Great Jones Alley



680 BROADWAY

Tenants



MICHAEL ANDREWS
BESPOKE

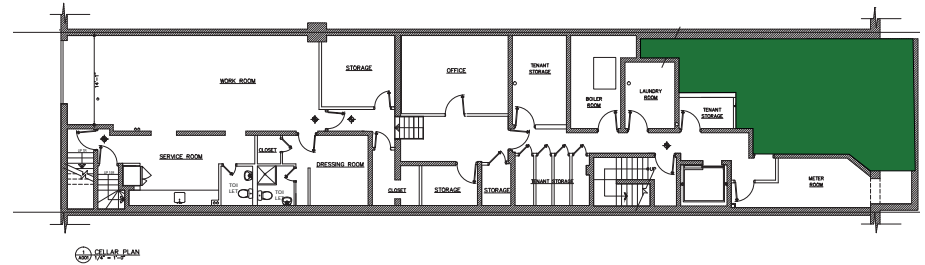
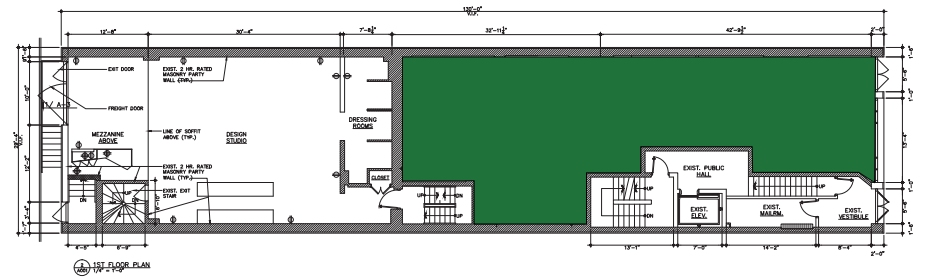
EYES ON BROADWAY
EYES ON THE WORLD

MICHAEL ANDREWS BESPOKE

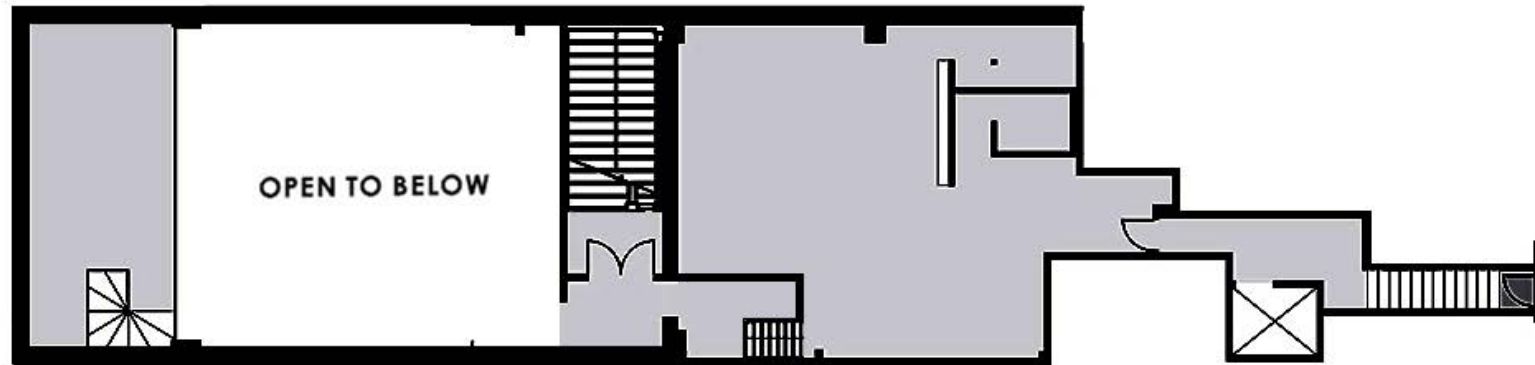
Michael Andrews LLC, operating as Michael Andrews Bespoke, is a custom tailor based in New York City, specializing in bespoke and made-to-measure suits, shirts, jackets, and pants for both men and women. In recent developments, Michael Andrews Bespoke acquired the luxury menswear brand Angel Ramos | New York, leading to the formation of a new parent company, MAARNY LLC, to oversee future business expansions.

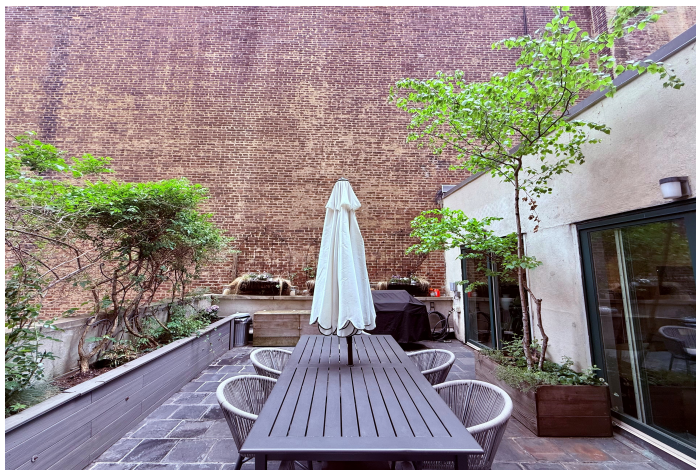
EYES ON BROADWAY

Eyes on Broadway is a family-owned optical boutique located in New York City's NoHo neighborhood. They offer comprehensive eye exams conducted by experienced optometrists and a wide selection of eyeglasses and contact lenses to suit various styles and budgets. Their team of expert opticians assists customers in finding the perfect eyewear to optimize vision and complement personal style.

[illegible]

MEZZANINE





680 BROADWAY

Points of Interest



NOHO

NoHo, short for "North of Houston Street," is a vibrant neighborhood in Lower Manhattan, New York City. Known for its historic cast-iron buildings, trendy lofts, and artistic vibe, it's home to a mix of upscale boutiques, restaurants, and creative spaces. Once an industrial area, NoHo has evolved into one of NYC's most stylish and sought-after districts.



NEW YORK UNIVERSITY

NYU is a prestigious private research university based in New York City, with its main campus centered around Washington Square Park in Manhattan. Known for its strong programs in arts, business, law, and global studies, NYU attracts students from all over the world. Its urban campus offers a unique blend of academic rigor and cultural immersion in the heart of NYC.



BROADWAY

Broadway is a famous avenue in New York City, best known for being the heart of the American theater industry. It features over 40 professional theaters showcasing world-renowned musicals, plays, and performances. A symbol of entertainment and culture, Broadway draws millions of visitors each year to experience its iconic shows.

PLEASE CONTACT:

NICHOLAS T. JUDSON

212-202-9200

njudson@judsoncre.com

STEPHEN GUEYE

212-202-9200

sgueye@judsoncre.com

E 8th Street	GNC Citi AT&T Warehouse Wines & Spirits fresh&co	Pret A Manger	
Waverly Pl		The Donut Pub	sweetgreen
Hungry Ghost	Tisch School Of The Arts	ClearMD T-Mobile	Raising Cane's
Washington Pl			
	NYU Department of Psychology	McDonald's Foot Locker Buffalo Exchange 2nd STREET HypeClub Rumble Boxing Spectrum	
W 4th Street	Citibank ATM Cafe Hugo DIG The Evolution Store	Bond Vet Blank Street Coffee	
		Great Jones Distilling Co Capsule Hats	
W 3rd Street			Great Jones Street
	Starbucks MARIA TASH Monsieur Brunold Gregory's Coffee Tucci	680 BROADWAY Juice Press Zero Bond	Away Luggage Equinox
			Bond Street
Bleecker Street		Kith	Bond No. 9
	Little Market NYC Casper Chipotle	Urban Outfitters RIPNDIP adidas	
Houston Street			
	American Eagle H&M Verizon Pandora & Other Stories PRADA	Target Athleta The North Face ARC'TERYX EQUINOX BOSS	
Prince Street			
	MANGO SEPHORA Abercrombie & Fitch Lacoste Guess Nike	Banana Republic UNIQLO SCHUTZ Armani Exchange SKECHERS	
Spring Street			