



SUN CITY WEST PLAZA | RARE BOX & ENDCAP OPPORTUNITY



R H JOHNSON BLVD & MEEKER BLVD

SUN CITY WEST, AZ



property summary

AVAILABLE	±1,723 SF / ±2,066 SF / ±45,708 SF	LEASE RATE	Call for Rate
JURISDICTION	County Island	ZONING	C-2

LOCATION HIGHLIGHTS

- » ±45,708 SF Single Tenant Building (can be demised), ±1,723 SF, & ±2,066 SF endcap.
- » Two (2) Double Sided Monument Signs
- » Less than 1 mile East of Grand Ave.
- » Neighboring the new Victory Autism Academy.
- » Located across the street from RH Johnson Recreation Center.
- » Less than 4 miles Away from Asante, new 14,000 Home Master Plan Community
- » Less than 5 miles away from Vistancia, new 10,500 Home Master Plan Community.
- » Strong residential demos:
±204,771 Residence Within 5-miles.



TRAFFIC COUNTS INRIX 2022

R H Johnson Blvd

N ±10,586 VPD (NB & SB)

S ±16,138 VPD (NB & SB)

Meeker Blvd

E ±8,961 VPD (EB & WB)

W ±9,127 VPD (EB & WB)

NEIGHBORING TENANTS



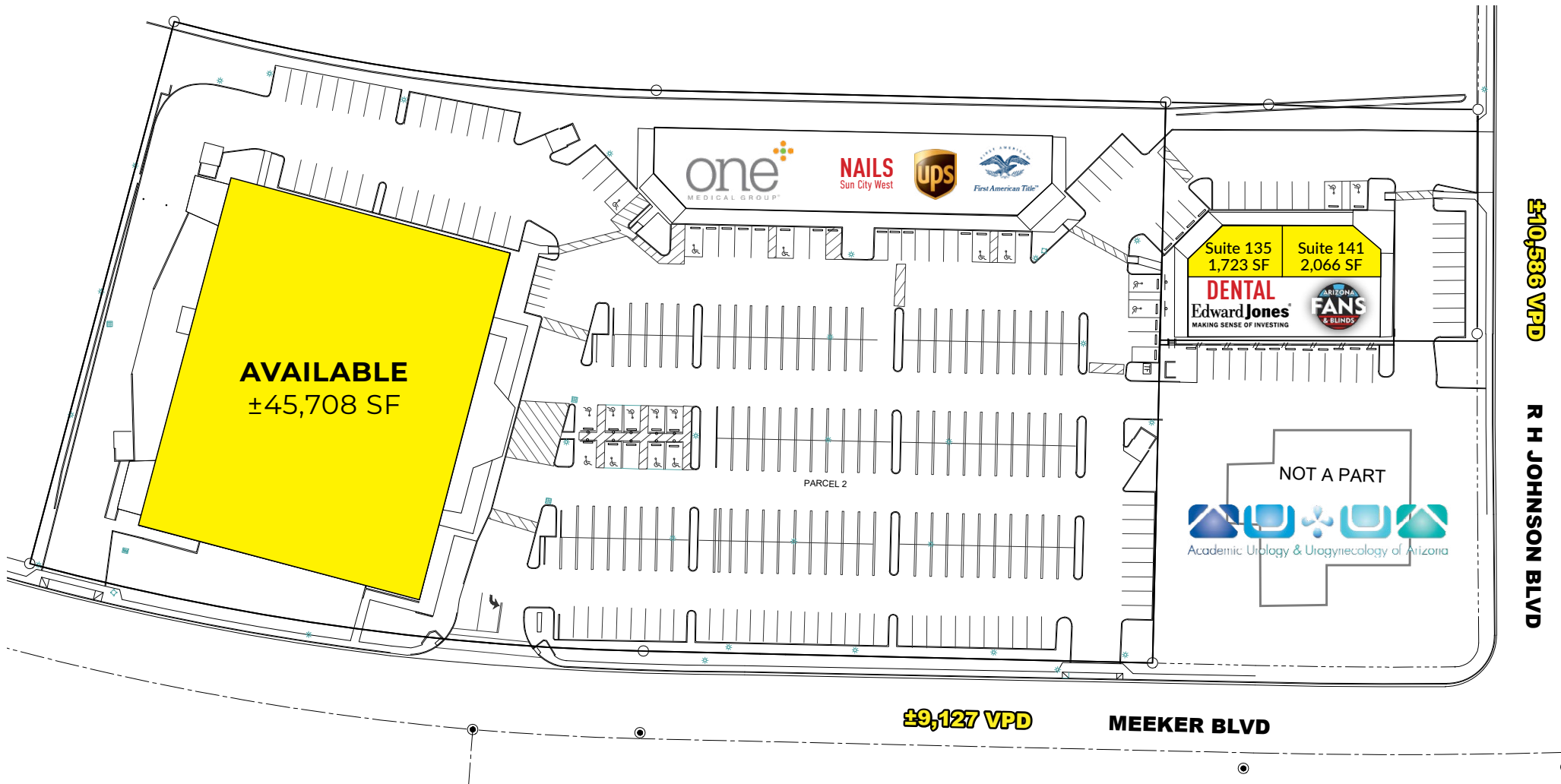
SWC

RARE BOX & ENDCAP OPPORTUNITY

R H JOHNSON BLVD & MEEKER BLVD



site plan



SWC

RARE BOX & ENDCAP OPPORTUNITY

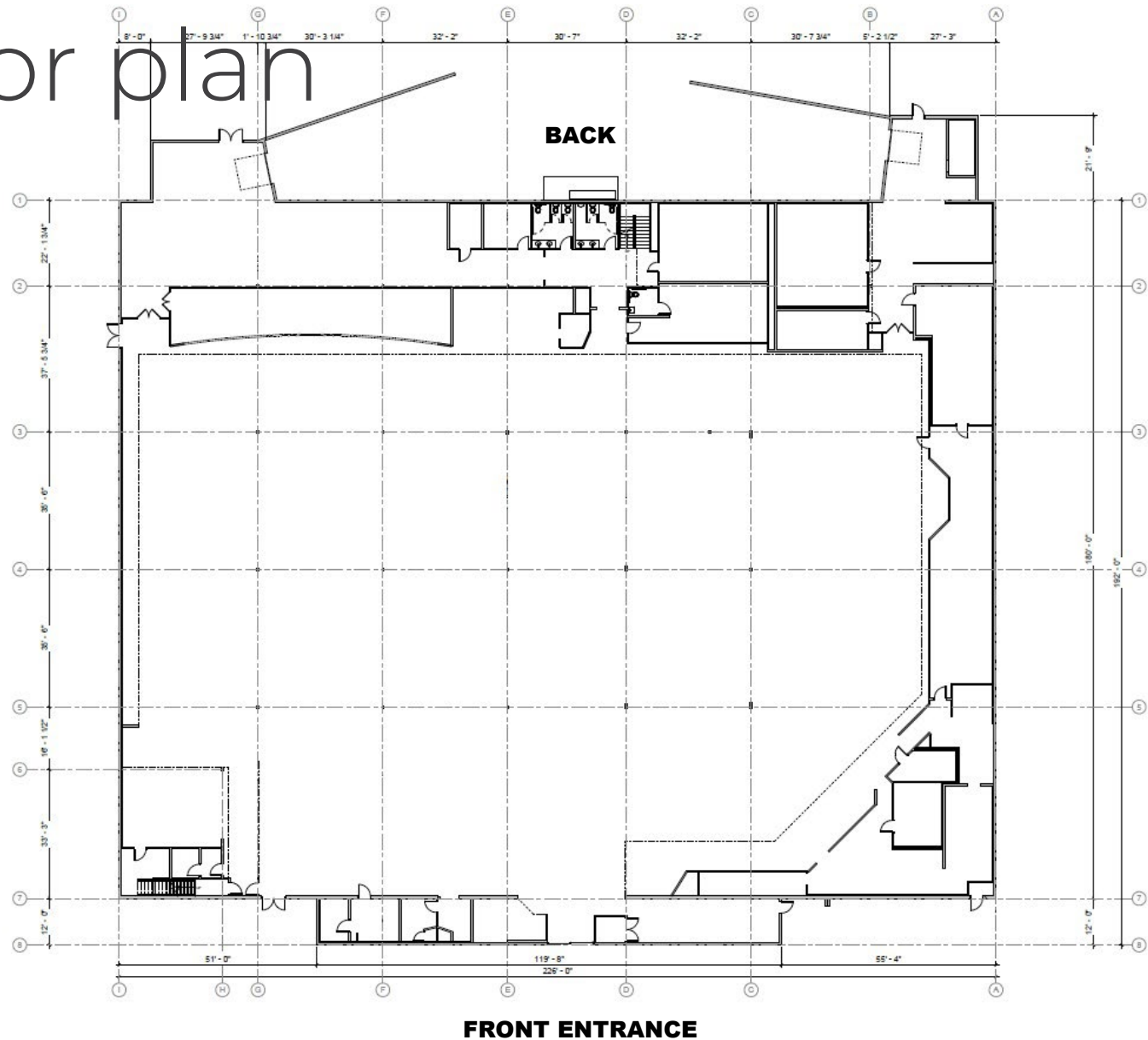
R H JOHNSON BLVD & MEEKER BLVD



anchor floor plan

BOX DETAILS

Ceiling Heights	22.5' To Roof
Power	2,000a @ 277/480v + Natural Gas
Column Spacing	±30' – 35' Depending On Location
Loading Docks	2 Truck Wells



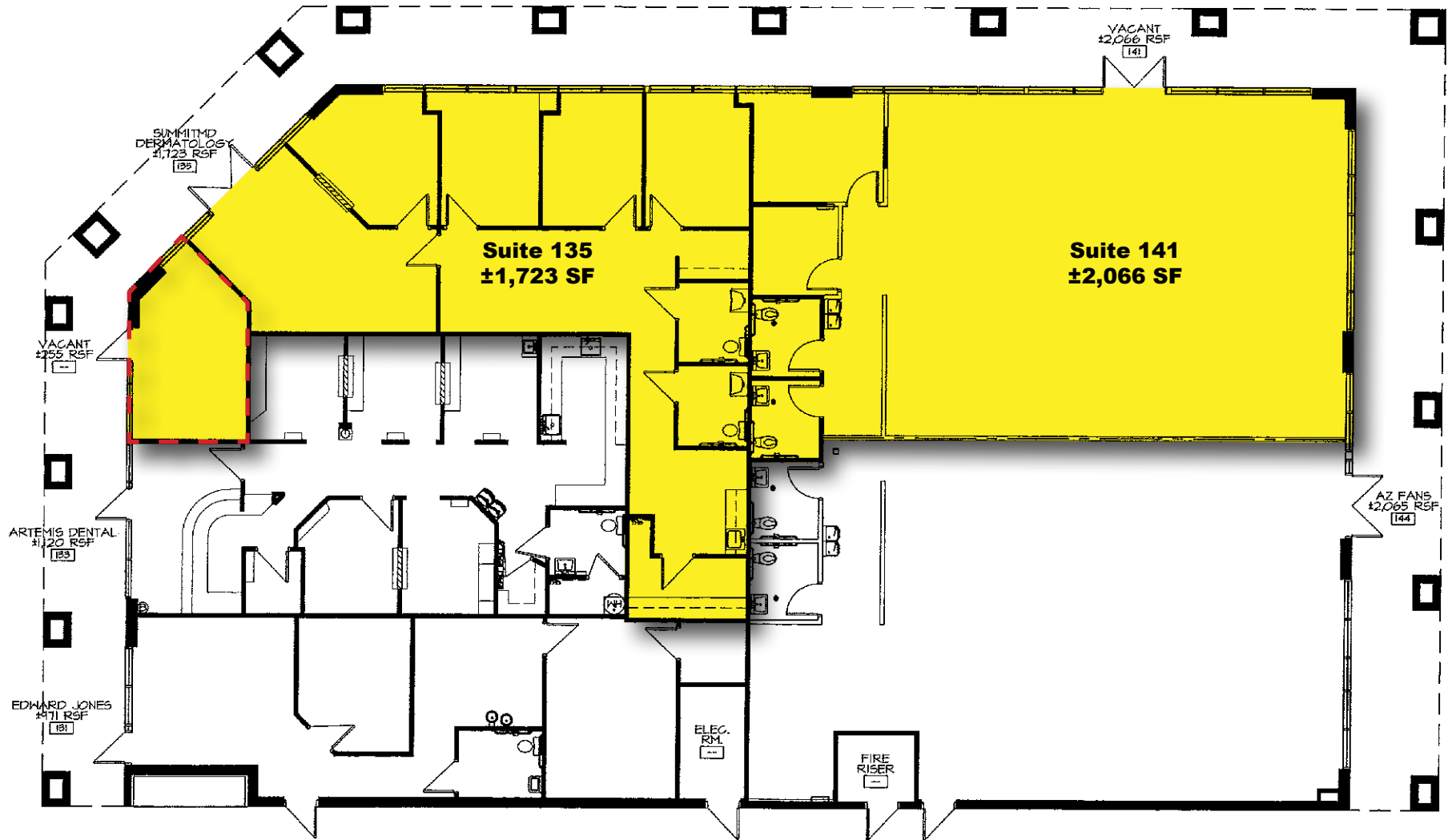
SWC

RARE BOX & ENDCAP OPPORTUNITY

R H JOHNSON BLVD & MEEKER BLVD



endcap floor plan



SWC

RARE BOX & ENDCAP OPPORTUNITY

R H JOHNSON BLVD & MEEKER BLVD

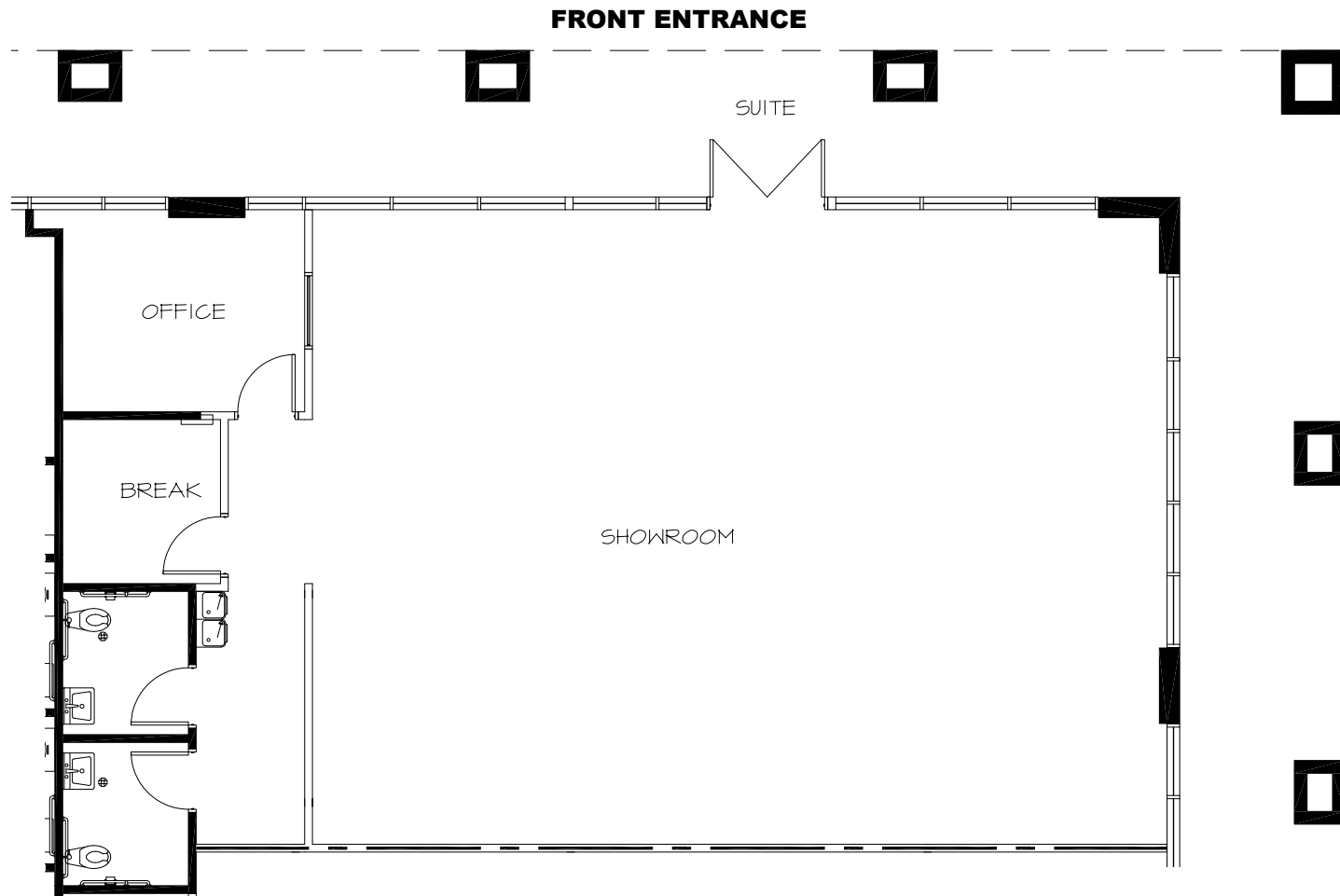


endcap floor plan

suite 141

ENDCAP DETAILS

- New HVAC
- 2,066 SF
- 2 Restrooms
- Infrastructure for kitchen



SWC

RARE BOX & ENDCAP OPPORTUNITY

R H JOHNSON BLVD & MEEKER BLVD





SWC

RARE BOX & ENDCAP OPPORTUNITY

R H JOHNSON BLVD & MEEKER BLVD

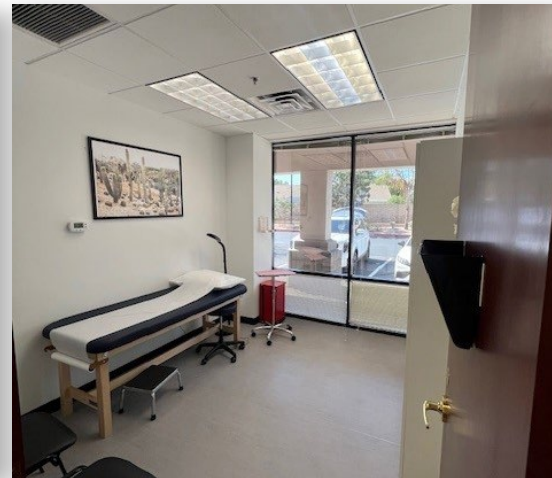


medical office floor plan

suite 135

DETAILS

- New HVAC
- 1,723 SF
- 2 Restrooms
- Kitchenette
- 3 Exam Rooms
- Reception Area



SWC

RARE BOX & ENDCAP OPPORTUNITY

R H JOHNSON BLVD & MEEKER BLVD



zoom aerial

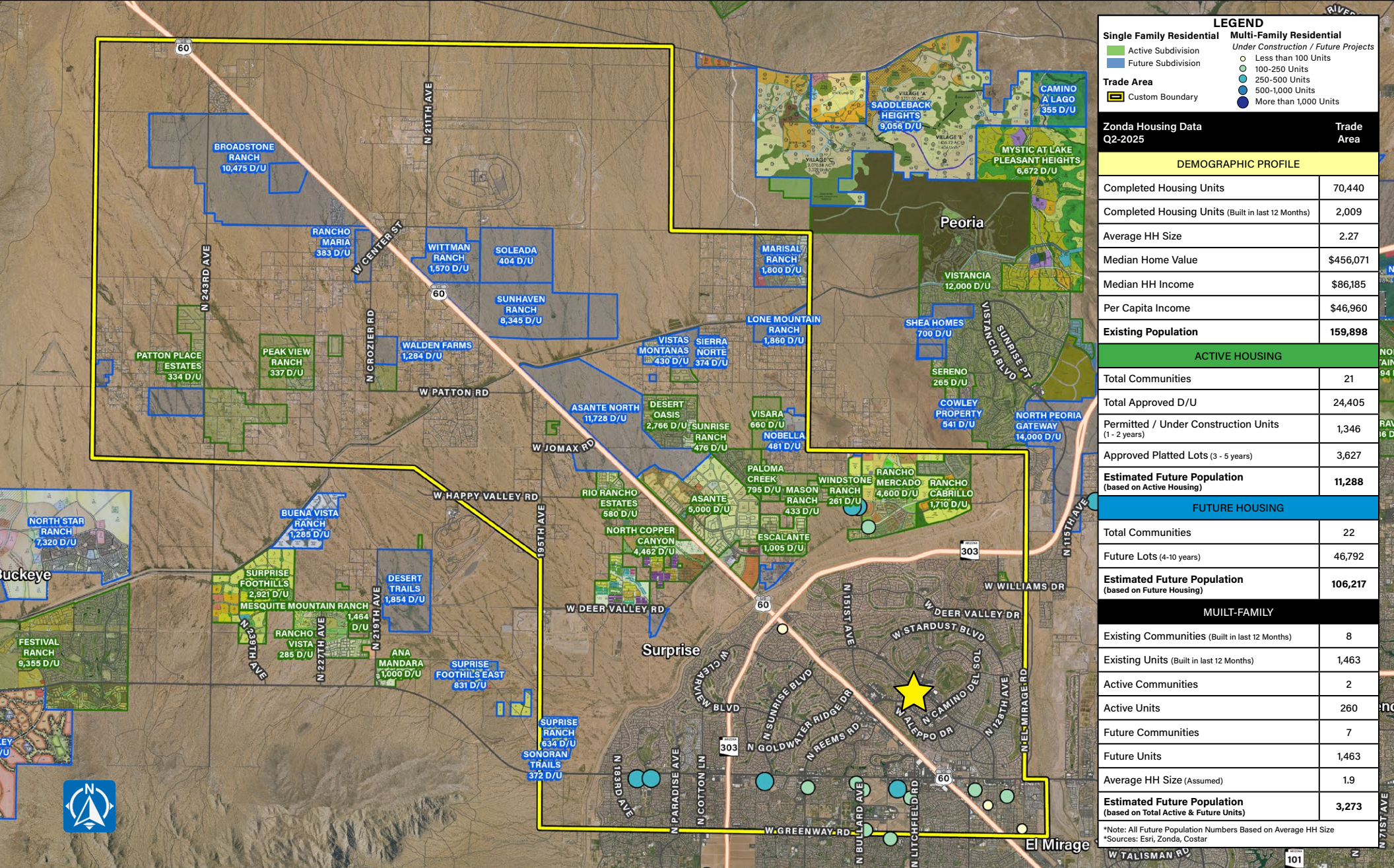


SWC

RARE BOX & ENDCAP OPPORTUNITY

R H JOHNSON BLVD & MEEKER BLVD





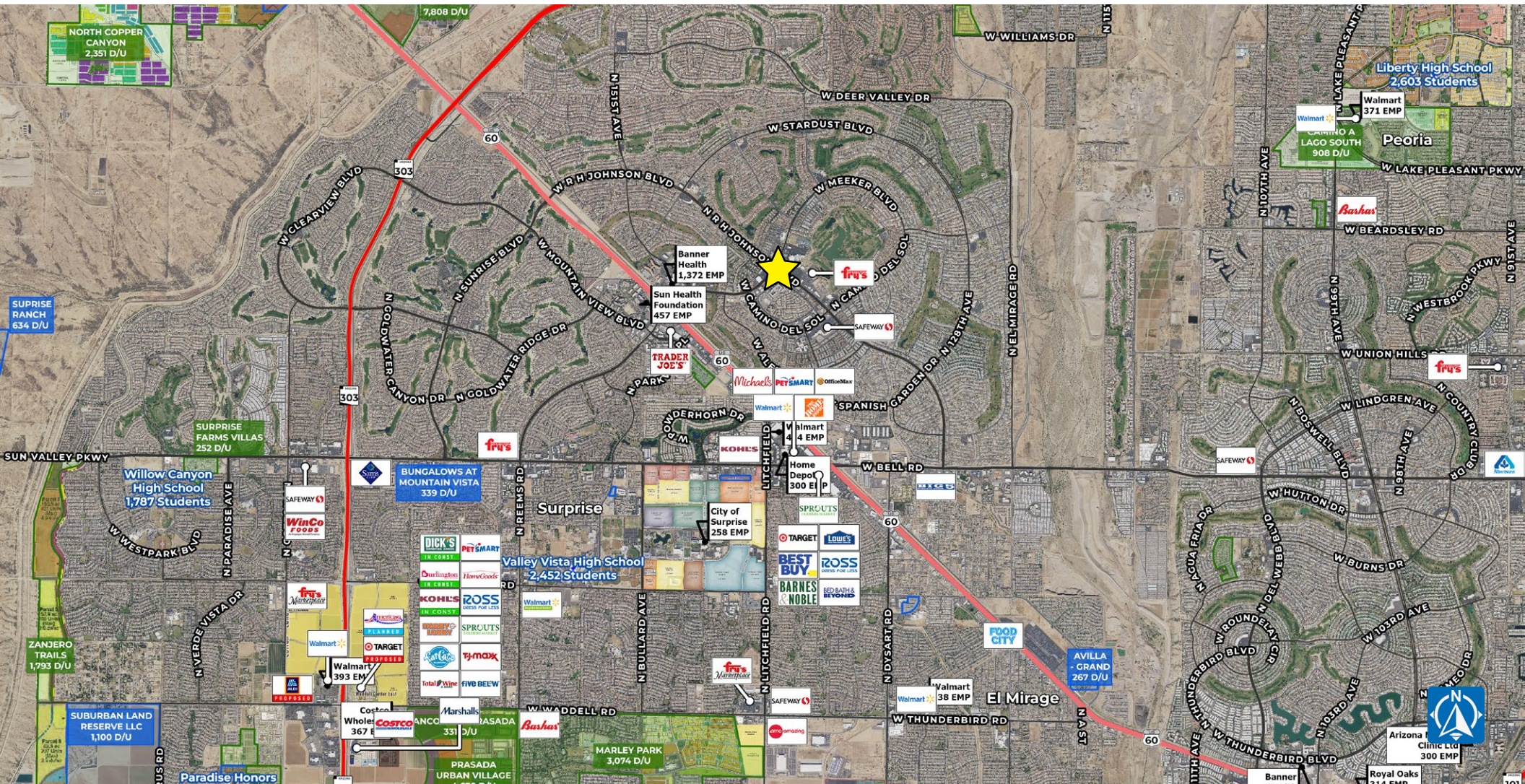
SWC

RARE BOX & ENDCAP OPPORTUNITY

R H JOHNSON BLVD & MEEKER BLVD



wide aerial



SWC

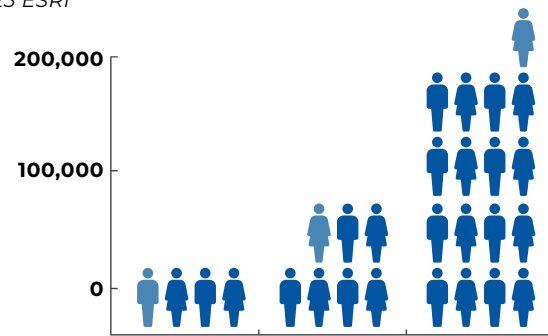
RARE BOX & ENDCAP OPPORTUNITY

R H JOHNSON BLVD & MEEKER BLVD



demographics

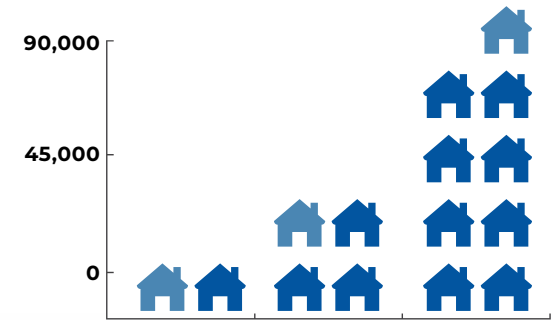
2025 ESRI



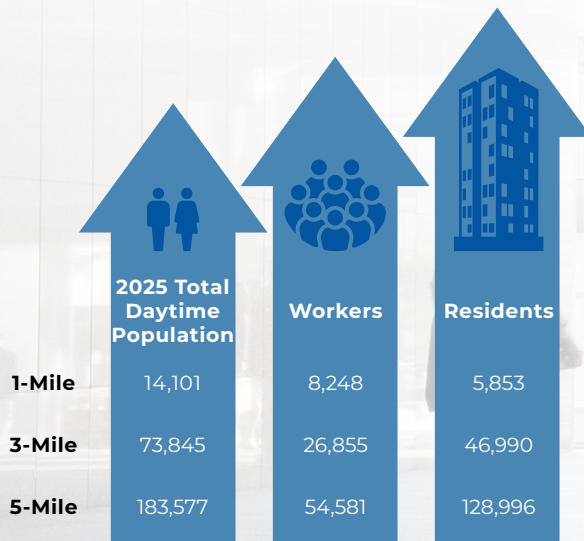
	1-Mile	3-Mile	5-Mile
2025 Total Population	6,658	67,538	212,195
2030 Total Population	6,639	70,134	218,528



	Median HH Income	Average HH Income	Per Capita Income
1-Mile	\$65,683	\$77,874	\$50,179
3-Mile	\$75,642	\$98,108	\$48,590
5-Mile	\$84,222	\$105,873	\$43,864

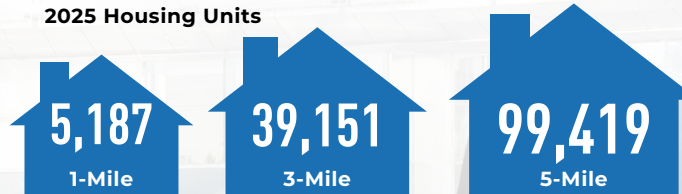


	1-Mile	3-Mile	5-Mile
2025 Households	4,346	33,571	87,733
2030 Households	4,378	34,724	90,630



	2025 Total Daytime Population	Workers	Residents
1-Mile	14,101	8,248	5,853
3-Mile	73,845	26,855	46,990
5-Mile	183,577	54,581	128,996

2025 Housing Units



Owner Occupied

83.5% 81.2% 81.3%

1-Mile 3-Mile 5-Mile

Renter Occupied

16.5% 18.9% 18.7%

1-Mile 3-Mile 5-Mile

2025 Businesses

5-MILE

3,444

3-MILE

1,748

1-MILE

459

SWC

RARE BOX & ENDCAP OPPORTUNITY

R H JOHNSON BLVD & MEEKER BLVD





Exclusively listed by

NICK DEDONA
(602) 734-7208
ndedona@pcaemail.com

JACKSON DRAGON
(602) 288-3468
jdragon@pcaemail.com

JOHN WARREN
(602) 734-7219
jwarren@pcaemail.com

The information contained herein has been obtained from sources believed reliable. While we do not doubt its accuracy, we have not verified it and make no guarantee, warranty or representation about it. It is your responsibility to independently confirm its accuracy and completeness. Any projections, opinions, assumptions or estimates used are for example only, and do not represent the current or future performance of the property. The value of this transaction to you depends on tax and other factors which should be evaluated by your tax, financial and legal advisors. You and your advisors should conduct a careful, independent investigation of the property to determine to your satisfaction the suitability of the property for your needs. 06/14/2021



3131 East Camelback Road, Suite 340 | Phoenix, Arizona 85016
P. (602) 957-9800 F. (602) 957-0889
www.pcainvestmentsales.com