

Available office space - Sublease

savills

FOR SUBLEASE

350 Washington Street, Tempe, AZ 85281



SPACE PROFILE

2,345 SF

Total SF

Negotiable

Rental rate

04/30/2028

Term

Immediate

Availability

For more information contact:

Dina Zavislak

Vice Chairman

972 739 2204

dzavislak@savills.us



SPACE PROFILE

226
Suite

2,345 SF
Total SF

Negotiable
Rental Rate

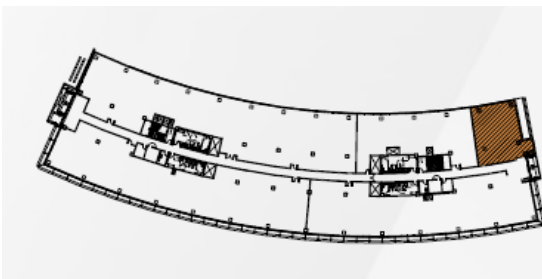
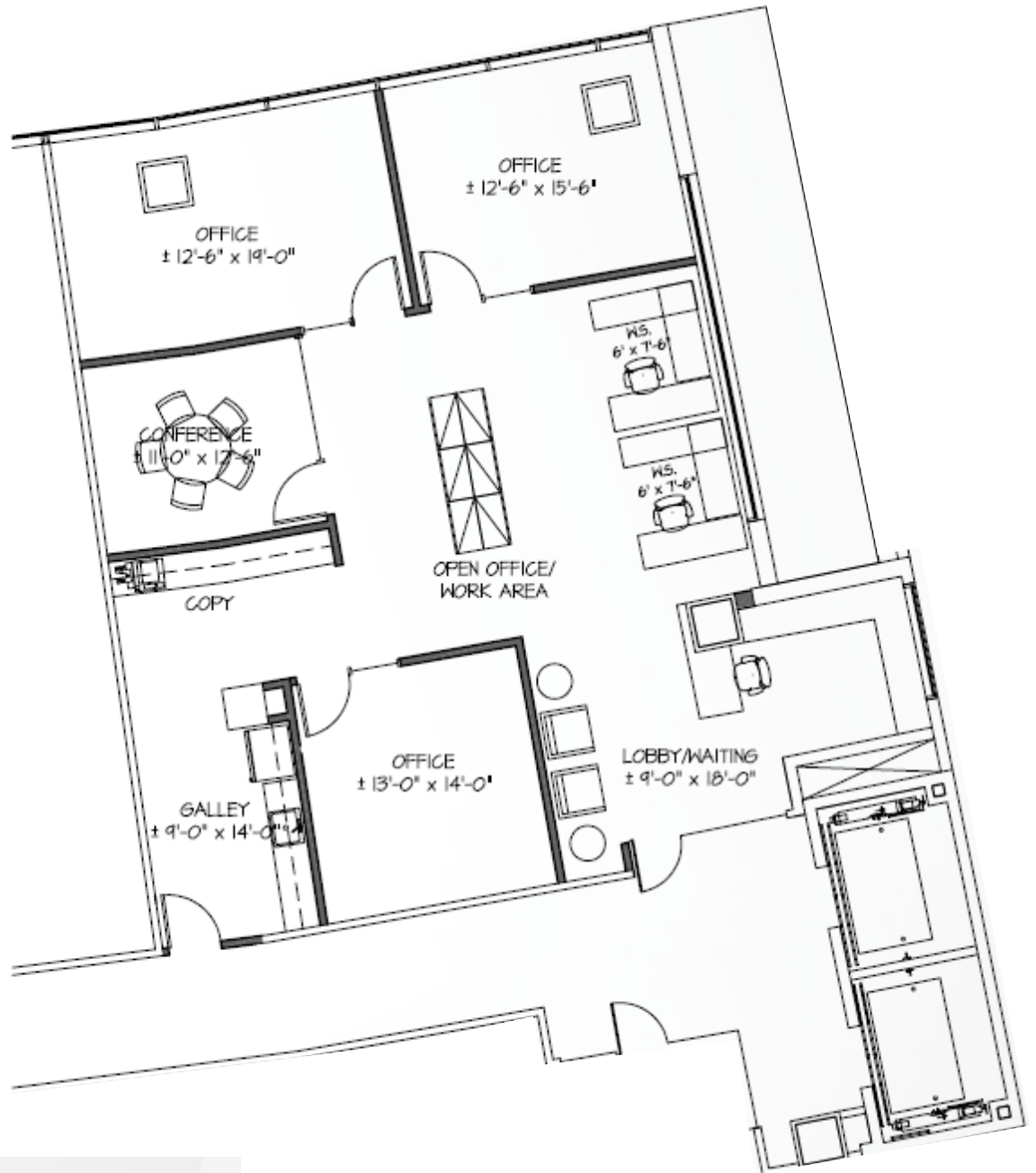
Immediate
Availability

04/30/2028
Term

KEY SUBLEASE HIGHLIGHTS

- Class A Space
- Reception and seating area
- Direct elevator exposure
- Plug & Play
- 3 private offices
- 2 cubicles
- Conference room
- Galley Kitchen area
- Copy room area
- Restrooms on floor





KEY PROPERTY HIGHLIGHTS

- Class A office building
- Built in 2008
- 6 stories
- Building Size: 246,501 SF
- Typical Floor Size: 38,138 SF
- Parking Ratio: 4.00/1,000 SF
- Walking distance to light rail
- Fitness center
- On site management
- Convenience store
- On-Site Deli
- 24 Hour Access



Dina Zavislak

Vice Chairman
972 739 2204
dzavislak@savills.us

The information contained in this communication has been obtained from a variety of sources believed to be reliable but has not been verified. NO WARRANTY OR REPRESENTATION, EXPRESS OR IMPLIED, IS MADE AS TO THE CONDITION OF THE PROPERTY OR ACCURACY OR COMPLETENESS OF THE INFORMATION CONTAINED HEREIN AND SAME IS SUBMITTED SUBJECT TO ERRORS, OMISSIONS, CHANGE OF PRICE, RENTAL OR OTHER CONDITIONS, WITHDRAWAL WITHOUT NOTICE AND TO ANY SPECIFIC CONDITIONS IMPOSED BY THE PROPERTY OWNER OR LESSOR.