

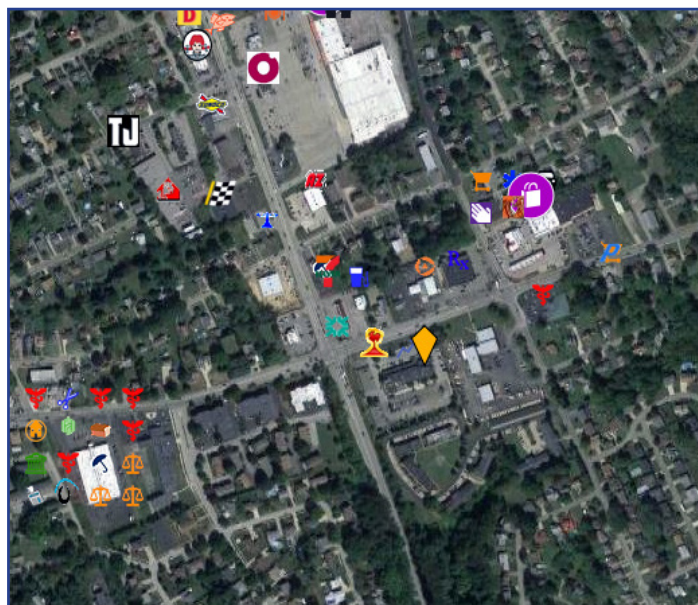
FOR LEASE
Former King's Restaurant

2400 Leechburg Road
Westmoreland County
New Kensington PA 15068



Property Highlights:

- Former King's Restaurant
- Turnkey Restaurant or other uses
- Busy intersection of Leechburg Road and Route 366
- Minutes to Route 28
- Large parking lots with abundant parking
- Potential for drive-through pick-up
- Excellent exposure and large back-lit marquee for tenant use
- Size: 8,252 +/- sf



DEMOGRAPHICS

	1 Mile	3 Mile	5 Mile
2022 Population	8,923	43,028	66,383
Median HH Income	\$56,533	\$47,678	\$53,918



CONTACT:
Garrett Cheran
Commercial Brokerage
412.261.6532 x236
garrett@prudentialrealty.com

CONTACT:
David Hanley
Broker
412.261.6532 x237
david@prudentialrealty.com

PRC Commercial
3700 South Water Street
Suite 105
Pittsburgh, PA 15203
www.prudentialrealty.com

All information furnished regarding this property for sale, rental, or financing is from sources deemed reliable but no warranty or representation is made as to the accuracy thereof and same is submitted subject to errors, omissions, change of price, rental or other conditions prior to sale, lease, or financing or withdrawal without notice. PRC Commercial will make no representation and assume no obligation regarding the presence or absence of toxic or hazardous waste or substances or other undesirable material on or about the property which will ultimately be leased or purchased.