

FOR LEASE



Bellaire
MEDICAL PLAZA

5420 DASHWOOD DR
HOUSTON, TX 77081

OVERVIEW

Bellaire Medical Plaza is a 3-story medical office building offering 57,988 SF of medical space in the heart of Bellaire.

This property is the perfect choice for medical professionals and healthcare services looking to establish a strong presence in the Bellaire submarket

HIGHLIGHTS

- Newly renovated Spec Suites available for immediate occupancy
- Recent renovations include: Upgraded corridor lighting, newly renovated lobby restroom and roof renovations
- Planned improvements include modernizing mechanical systems, re-glazing exterior curtain wall areas to enhance air quality, and undertaking comprehensive exterior landscaping improvements.
- Ample surface parking for patients and staff
- Covered patient drop-off for a convenient arrival and pick-up experience
- Monument signage available for maximum visibility
- Located one block from the Bellaire Triangle which consists of an abundance of restaurants and retail in the area

57,988

RENTABLE BUILDING AREA (SF)

3

STORY

5.10

PARKING RATIO PER 1,000 SF

1994

YEAR BUILT



Demographics

(3-MILE RADIUS)



2025 POPULATION
228,599



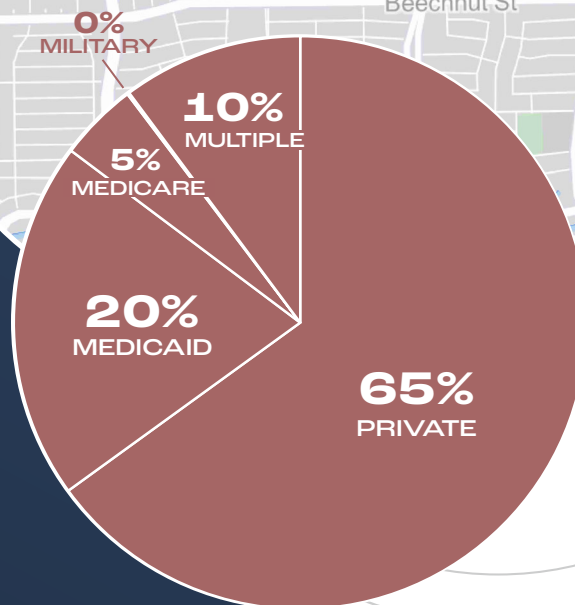
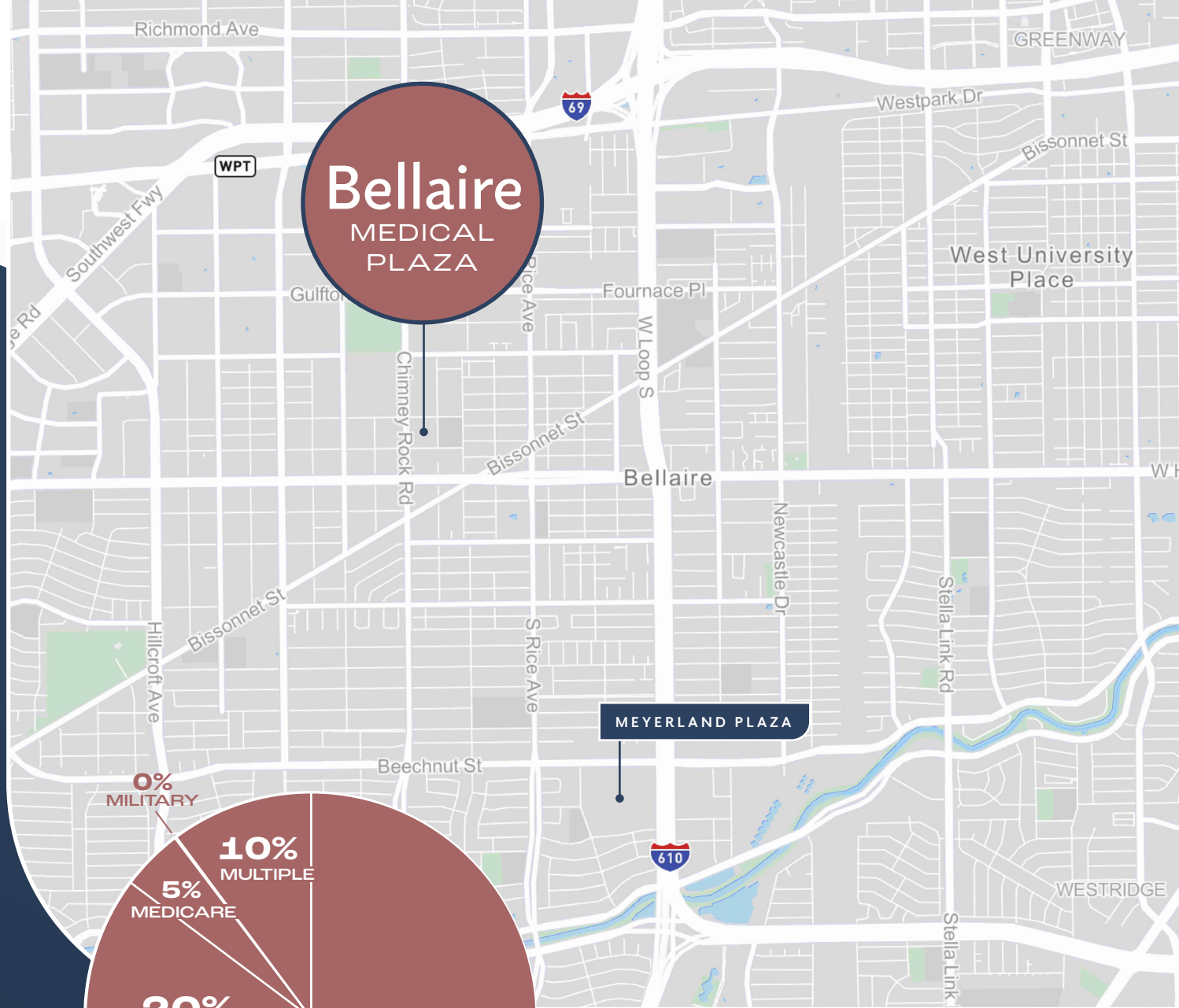
CONSUMER SPEND
ON HEALTHCARE
\$804.9M



AVG HOUSEHOLD INCOME
\$136,280



MEDIAN HOME VALUE
\$561,421



INSURANCE MIX (3 MILES)

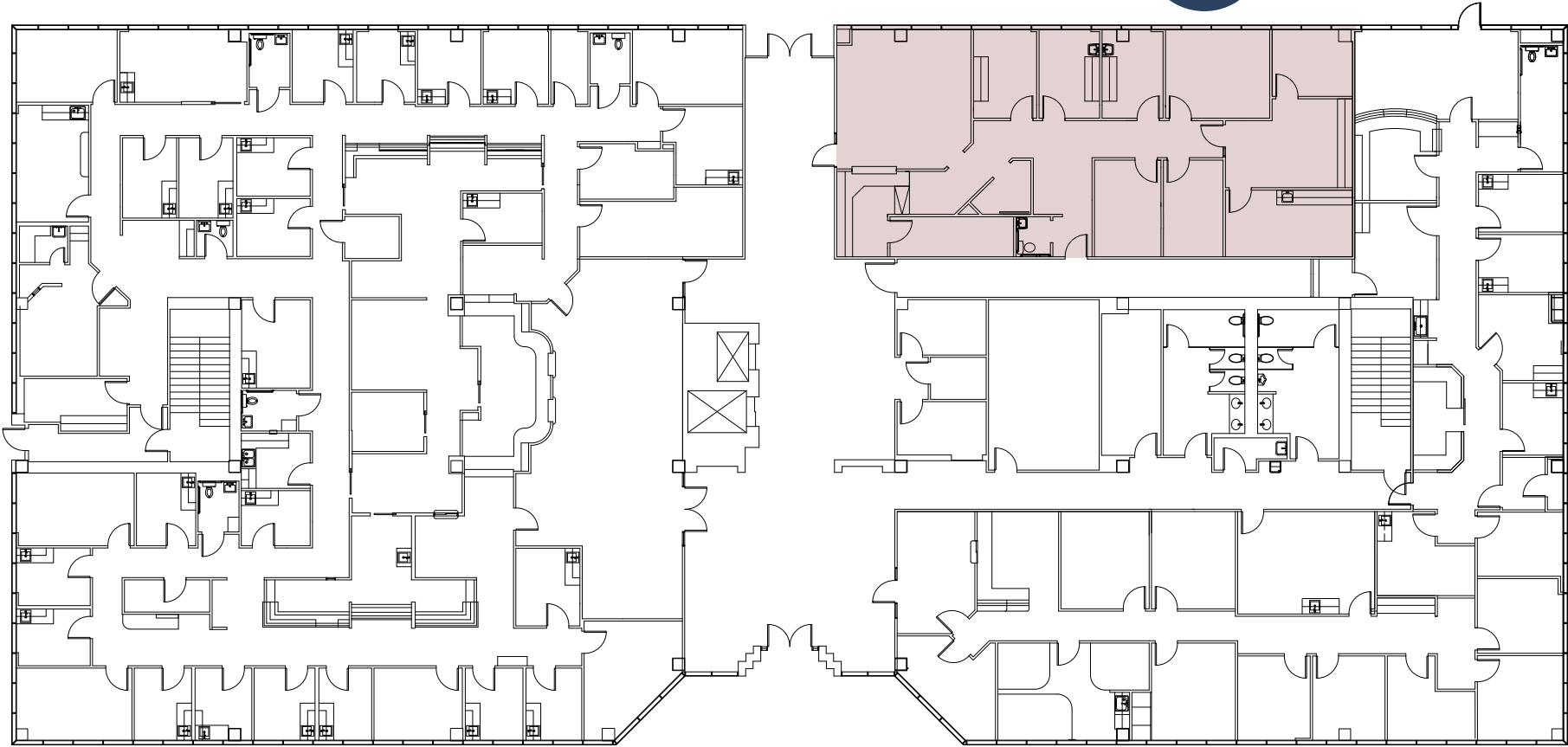


AVAILABLE SUITES

SUITE 101	2,640 SF	VIRTUAL TOUR
SUITE 202	3,876 SF	VIRTUAL TOUR
SUITE 204	937 SF	VIRTUAL TOUR
SUITE 207	SPEC SUITE 2,320 SF	VIRTUAL TOUR
SUITE 301	1,371 SF	VIRTUAL TOUR
SUITE 302	8,314 SF	VIRTUAL TOUR
SUITE 304	4,419 SF	VIRTUAL TOUR
SUITE 306	SPEC SUITE 1,261 SF	
SUITE 308	1,393 SF	VIRTUAL TOUR

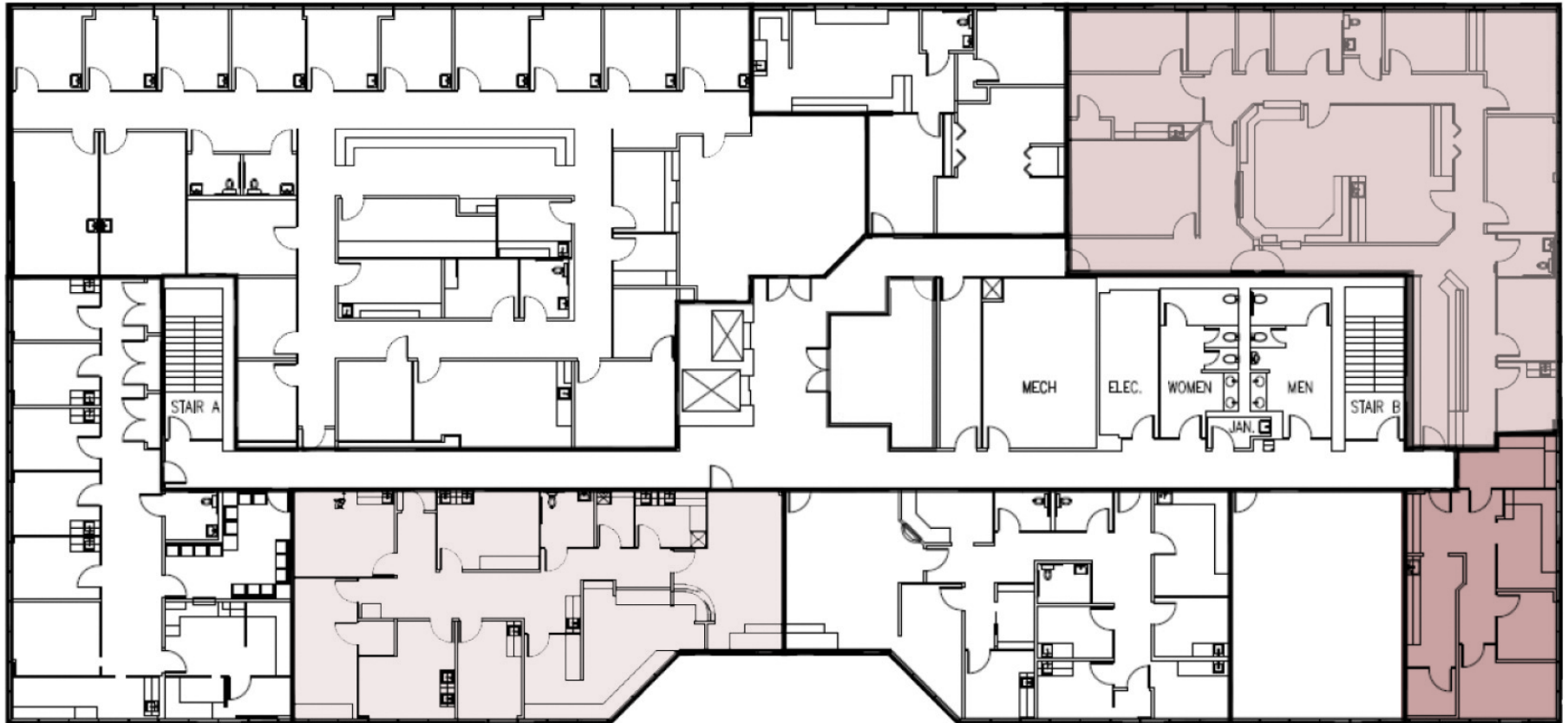
1st Floor Availabilities

SUITE 101
2,640 SF



2nd Floor Availabilities

SUITE 202
3,876 SF



SUITE 207
2,320 SF
SPEC SUITE



SUITE 204
937 SF



3rd Floor Availabilities

SUITE 302
8,314 SF



SUITE 301
1,371 SF



SUITE 308
1,393 SF



SUITE 306
1,261 SF

SPEC SUITE

SUITE 304
4,419 SF



*Suite 302/304/306/308 - Contiguous for up to 15,387 SF

Bellaire

MEDICAL PLAZA

5420 DASHWOOD DR | HOUSTON, TX 77081

MAX LOZMACK

Vice President

+1 713 598 9393

max.lozmack@cbre.com

ANNIE PERETICH

Associate

+1 317 688 1616

annie.peretich@cbre.com

© 2026 CBRE, Inc. All rights reserved. This information has been obtained from sources believed reliable but has not been verified for accuracy or completeness. CBRE, Inc. makes no guarantee, representation or warranty and accepts no responsibility or liability as to the accuracy, completeness, or reliability of the information contained herein. You should conduct a careful, independent investigation of the property and verify all information. Any reliance on this information is solely at your own risk. CBRE and the CBRE logo are service marks of CBRE, Inc. All other marks displayed on this document are the property of their respective owners, and the use of such marks does not imply any affiliation with or endorsement of CBRE. Photos herein are the property of their respective owners. Use of these images without the express written consent of the owner is prohibited.

CBRE