

RETAIL SPACE FOR LEASE



# 68 KENNEDY PLAZA

Providence, RI 02903

**DAN FEINER**

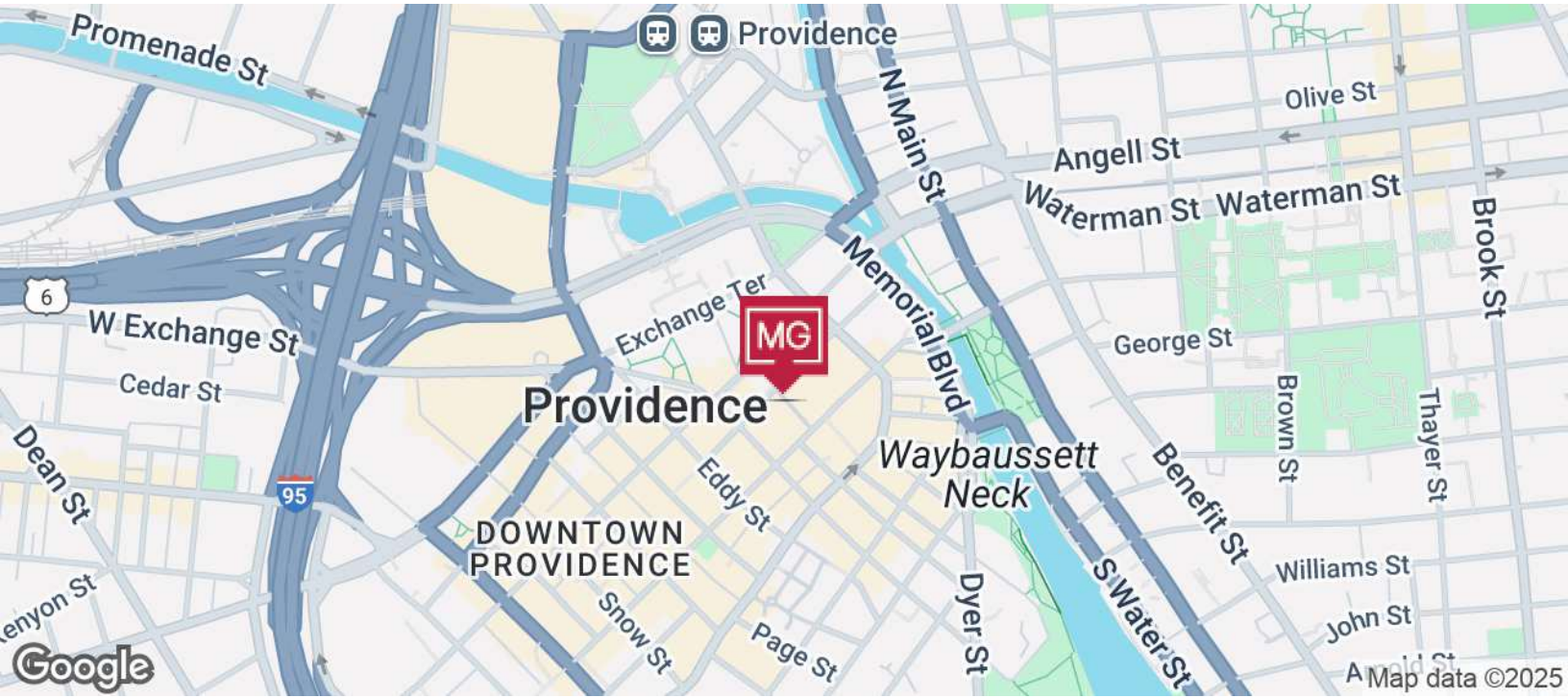
Vice President  
401.751.3200 x3310  
dan@mgcommercial.com

**MG COMMERCIAL**

365 Eddy Street, Penthouse Suite  
Providence, RI 02903  
401.751.3200 | mgcommercial.com



# PROPERTY SUMMARY



## PROPERTY DESCRIPTION

This 2,000 SF commercial space is perfect for office, medical and/or retail. The current floor plan provides 6 exam rooms with sinks, two offices, a front reception area and waiting room. The current floor plan is very efficient or alternatively interior walls can be removed for more open space. There is very strong foot traffic and the unit has excellent street visibility to support its business.

## PROPERTY HIGHLIGHTS

- Ideal location in the financial/business district
- Walking distance to many amenities including shopping, banking & restaurants
- Adjacent to Kennedy Plaza / RIPTA
- Very busy area and strong foot traffic
- Zoning: D-1-300

## LOCATION DESCRIPTION

Located in the heart of Providences central business district and walking distance to Providence Place Mall, City Hall, The Graduate Hotel, The Providence Convention Center, banks, restaurants and retail amenities. It is conveniently adjacent to Kennedy Plaza and is a short walk to the Amtrak / MBTA station.

## OFFERING SUMMARY

Lease Rate:	TBD
Available SF:	2,000 SF
Building Size:	10,004 SF

DEMOGRAPHICS	0.5 MILES	1 MILE	3 MILES
Total Households	3,313	12,667	88,191
Total Population	10,623	32,630	233,109
Average HH Income	\$173,830	\$132,491	\$92,513

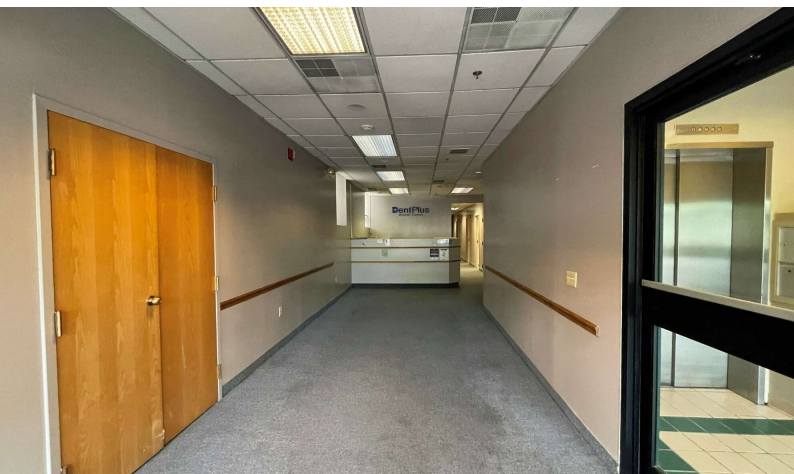
**DAN FEINER**  
 Vice President  
 401.751.3200 x3310  
 dan@mgcommercial.com

365 Eddy Street, Penthouse Suite  
 Providence, RI 02903  
 mgcommercial.com





# ADDITIONAL PHOTOS



**DAN FEINER**

Vice President  
401.751.3200 x3310  
dan@mgcommercial.com

365 Eddy Street, Penthouse Suite  
Providence, RI 02903  
mgcommercial.com





# AREA MAP



**DAN FEINER**  
 Vice President  
 401.751.3200 x3310  
 dan@mgcommercial.com

365 Eddy Street, Penthouse Suite  
 Providence, RI 02903  
 mgcommercial.com

