

# THE SQUARE *at Culver*

MEDICAL OFFICE CENTER



FOR LEASE | MEDICAL OFFICE SUITES

**MEADOWS**  
ASSET MANAGEMENT



# THE SQUARE *at Culver*

## MEDICAL OFFICE CENTER

14150 Culver Drive, Irvine, CA 92604



## PROPERTY HIGHLIGHTS

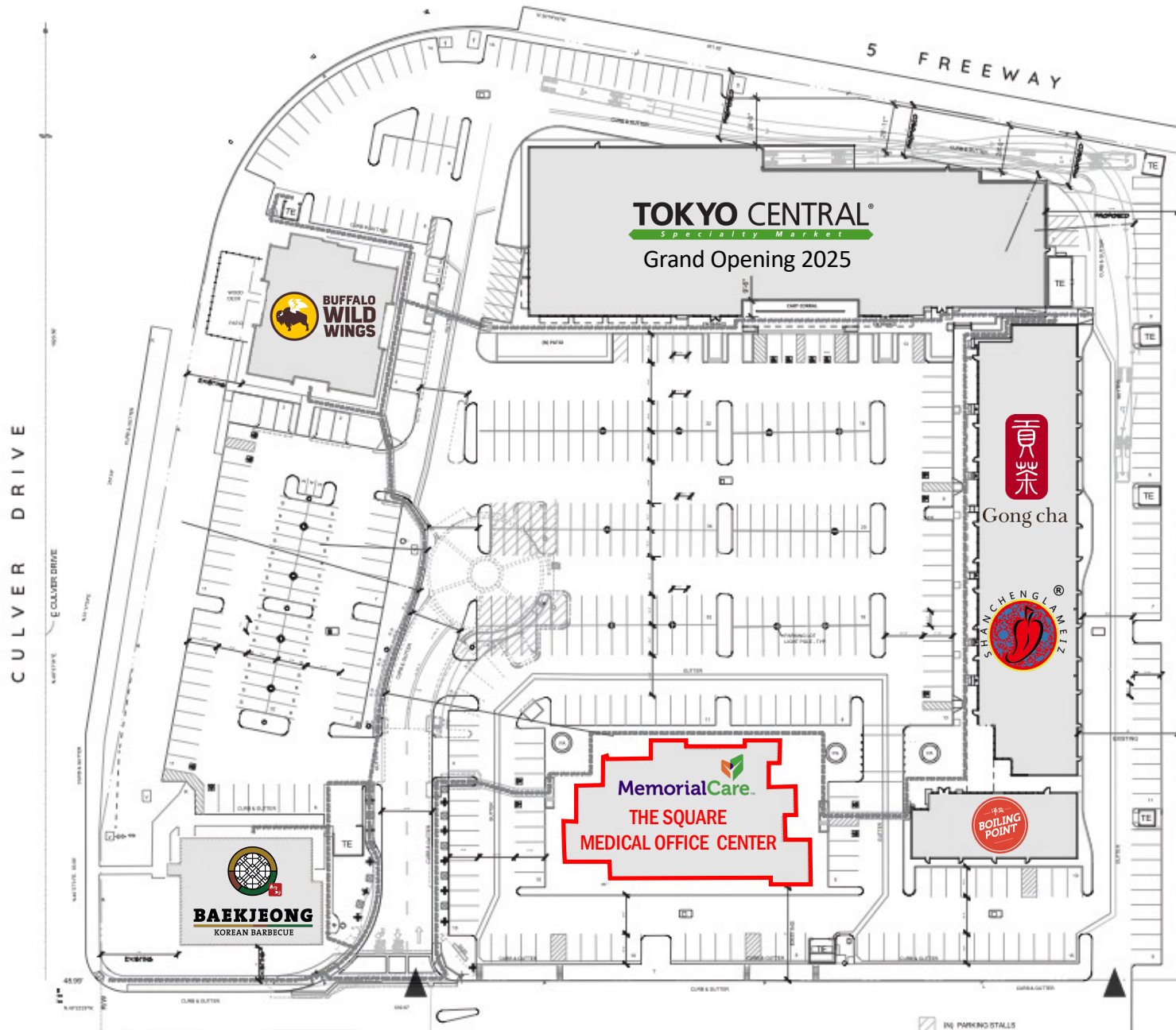
- High-image three-level medical office building with recently renovated interior
- High-traffic location with immediate access to I-5 Freeway ( $\pm 300\text{K}$  CPD) and Culver Dr. ( $\pm 52\text{K}$  CPD)
- Ample parking (approximately 4:1,000)
- Located in thriving retail corridor serving affluent Irvine trade area with  $\pm 400\text{K}$  residents within 5 miles
- The Square at Culver is a  $\pm 85,000$  SF neighborhood destination center currently undergoing a complete aesthetic renovation as well as a partial redevelopment for Tokyo Central opening 2025



# THE SQUARE *at Culver*

MEDICAL OFFICE CENTER

14150 Culver Drive, Irvine, CA 92604

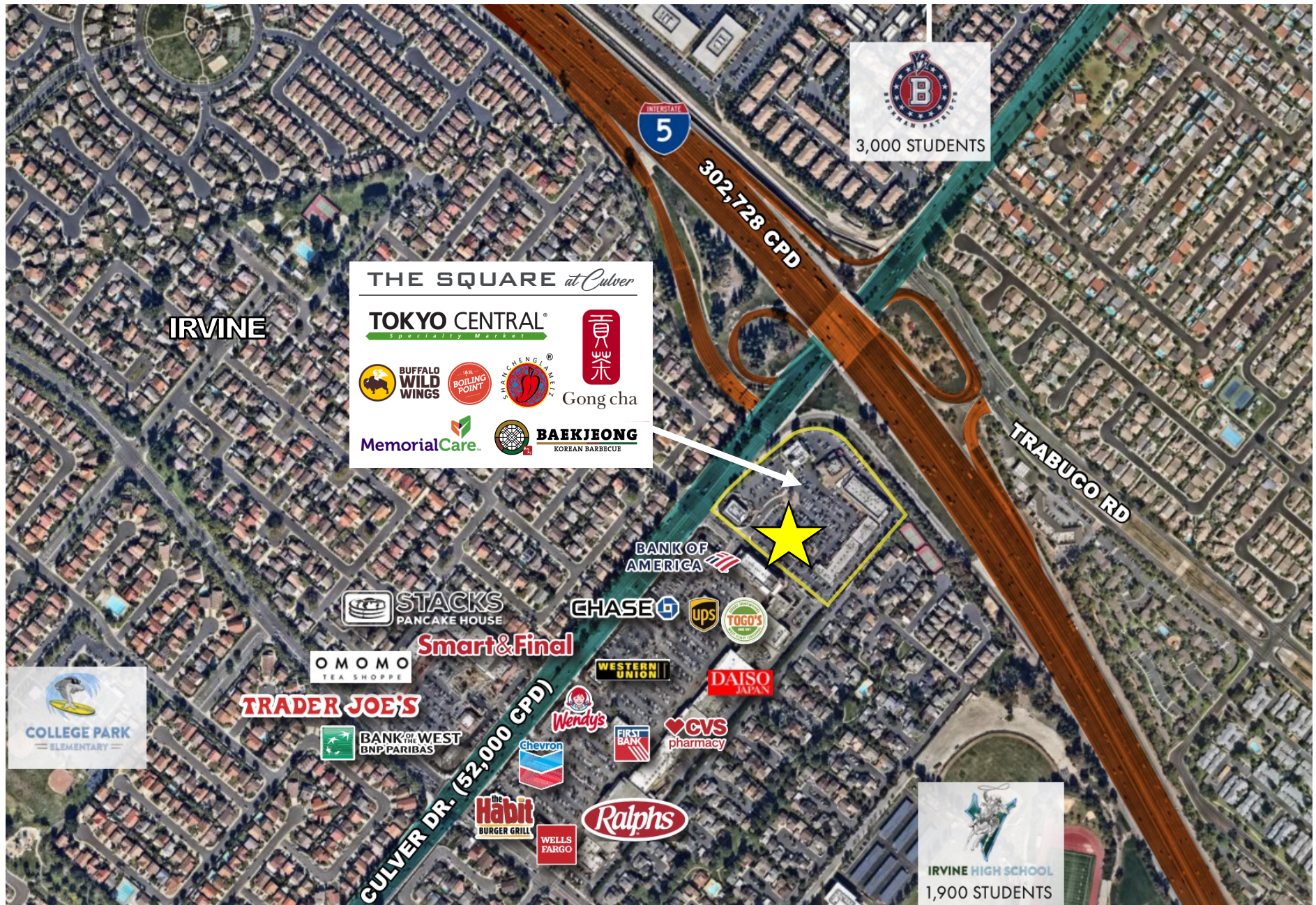




# THE SQUARE *at Culver*

MEDICAL OFFICE CENTER

14150 Culver Drive, Irvine, CA 92604

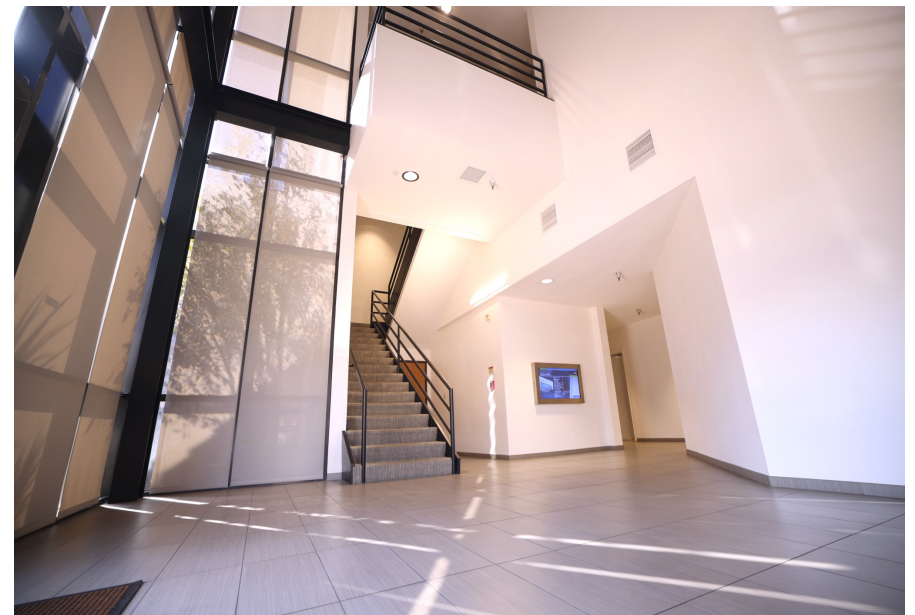




# THE SQUARE *at Culver*

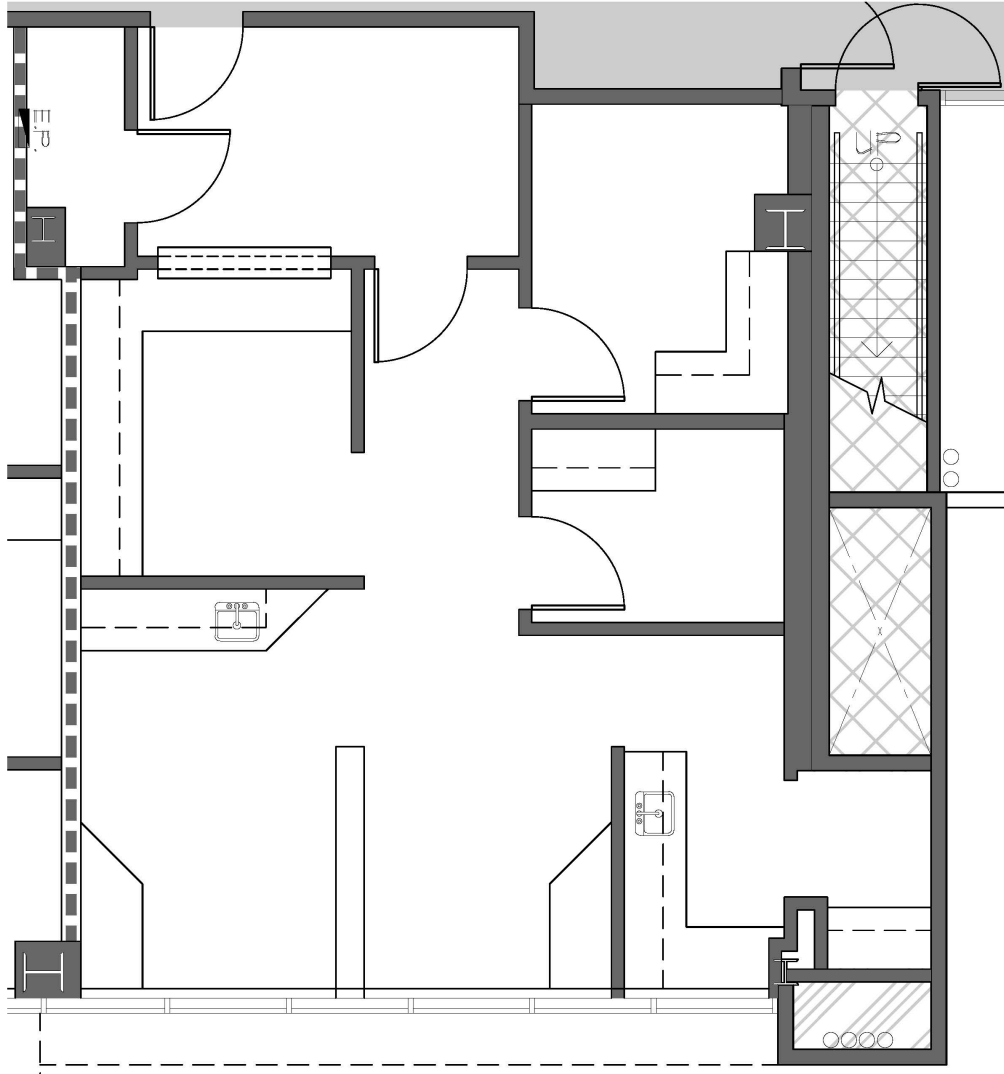
MEDICAL OFFICE CENTER

14150 Culver Drive, Irvine, CA 92604





**THE SQUARE** *at Culver*  
MEDICAL OFFICE CENTER



**Suite:** 303

**Sq. Ft.:** 941

**Type:** Medical Suite

**Floor:** 3rd

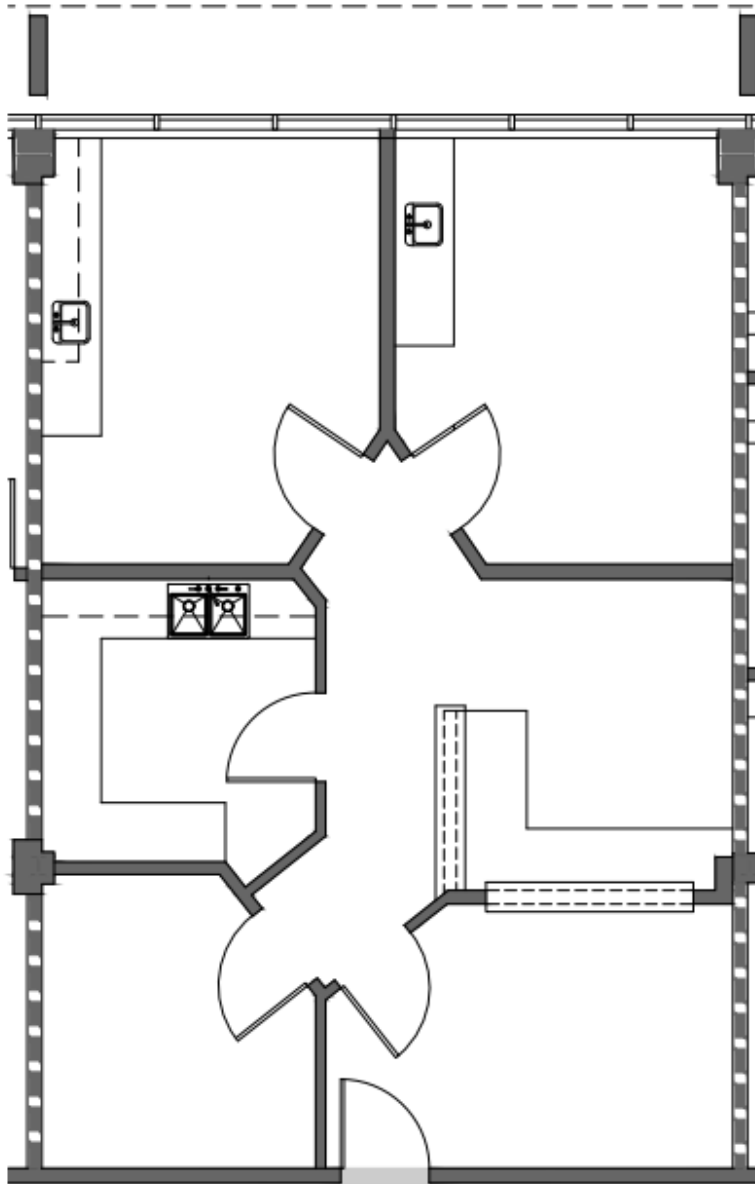
**Rate:** \$4.75/SF  
Modified Gross - Tenant  
pays electric + janitorial

**Available:** Now

**Condition:** Entire suite  
newly renovated



**THE SQUARE** *at Culver*  
MEDICAL OFFICE CENTER



**Suite:** 305

**Sq. Ft.:** 1,026

**Type:** Medical Suite

**Floor:** 3rd

**Rate:** \$4.75/SF  
Modified Gross - Tenant  
pays electric + janitorial

**Available:** Now

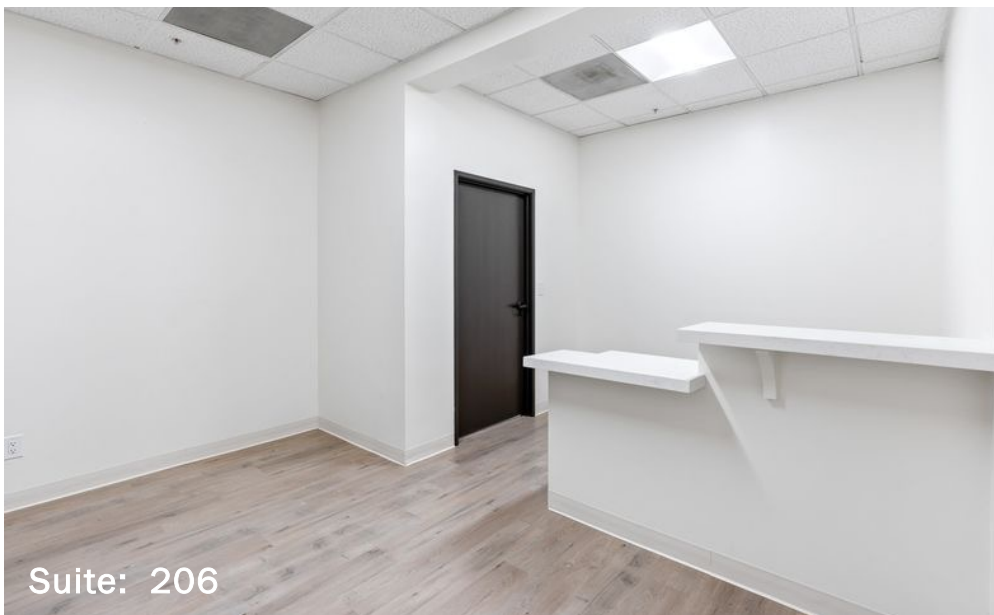
**Condition:** Entire suite  
newly renovated



# THE SQUARE *at Culver*

MEDICAL OFFICE CENTER

14150 Culver Drive, Irvine, CA 92604



Suite: 206





**THE SQUARE** *at Culver*  
MEDICAL OFFICE CENTER

14150 Culver Drive, Irvine, CA 92604



**MEADOWS**  
ASSET MANAGEMENT

**Kyle Desmet**  
949-694-6556  
kyled@mrc1.com

This information has been obtained from sources believed reliable but has not been verified for accuracy or completeness. You should conduct a careful, independent investigation of the property and verify all information. Any reliance on this information is solely at your own risk. All marks displayed on this document are the property of their respective owners, and the use of such logos does not imply any affiliation with or endorsement of Meadows Asset Management.