



# FOR LEASE

- ✓ ± 10,000 SF Available
- ✓ Zoned Ogden City OCIP
- ✓ Large Front Showroom / Retail Area
- ✓ Receiving Warehouse w/ OHD
- ✓ 5,000 SF Upstairs Storage Areas
- ✓ Frontage on Busy 1900 West
- ✓ Close to Freeway & Major Roads
- ✓ Tenant Improvements Negotiable
- ✓ MLS #2150348



**\$6,750.00/NNN**



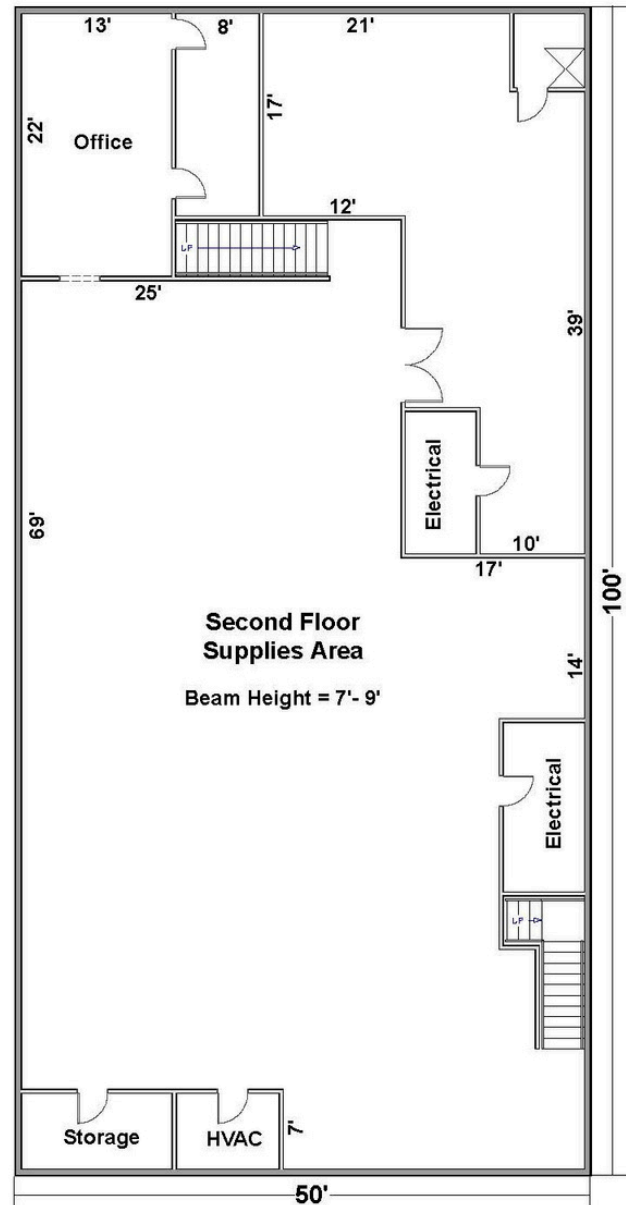
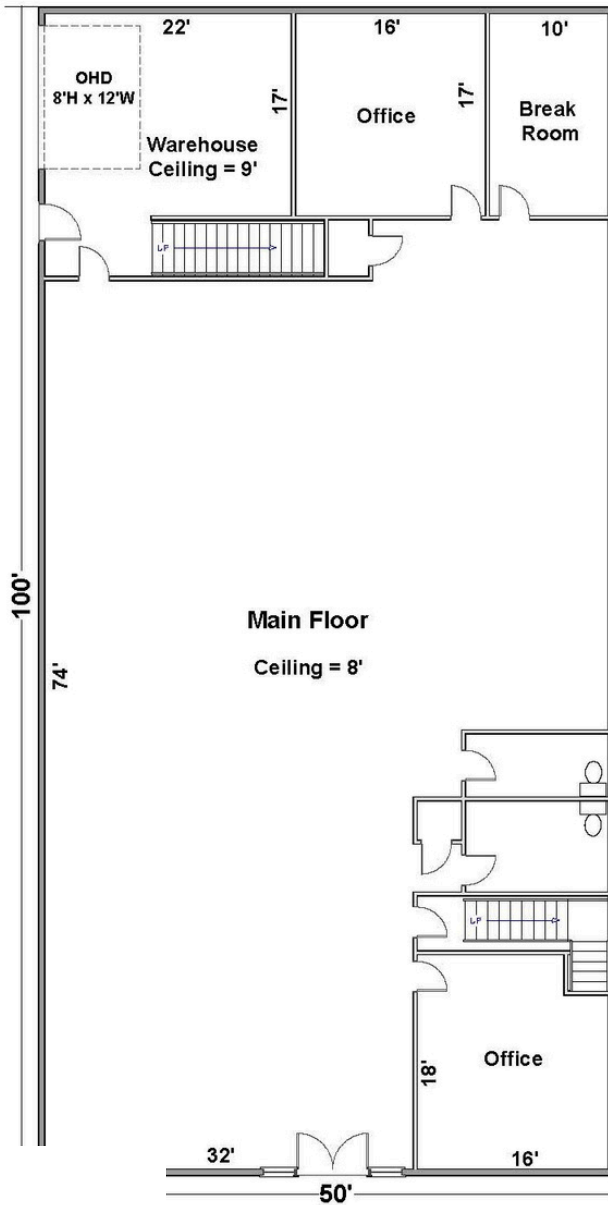
**2736 S 1900 W #A  
Ogden, Utah 84401**

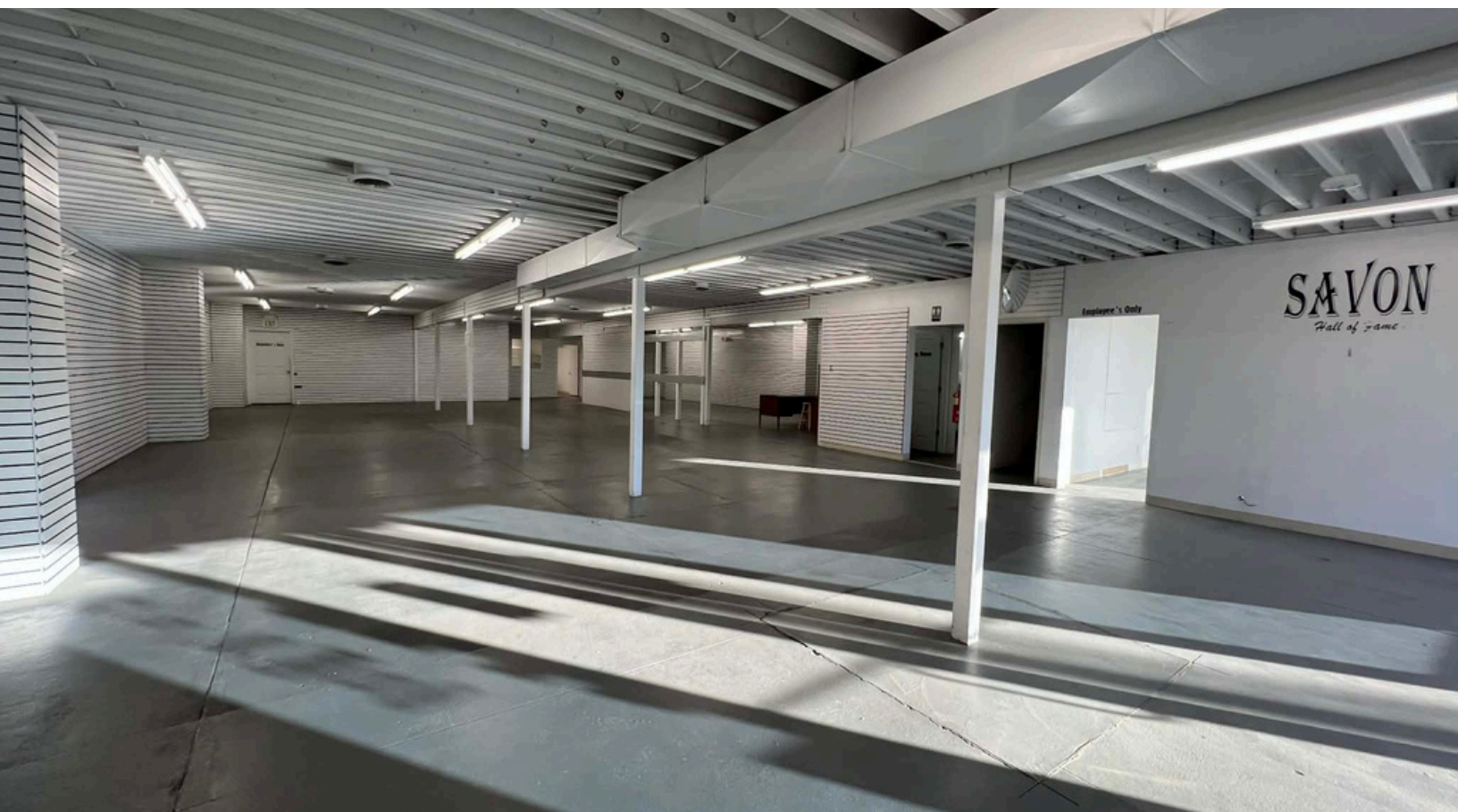
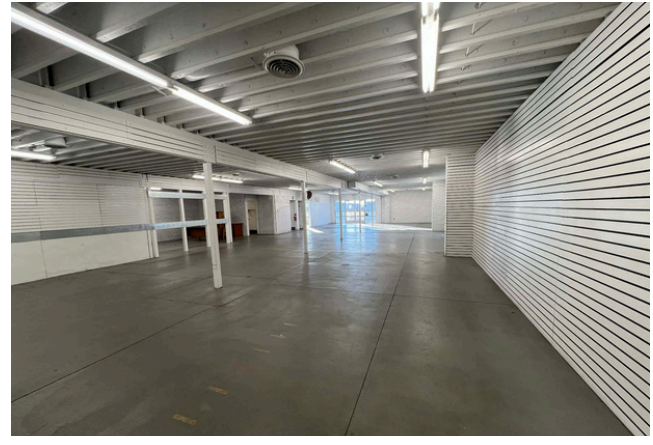
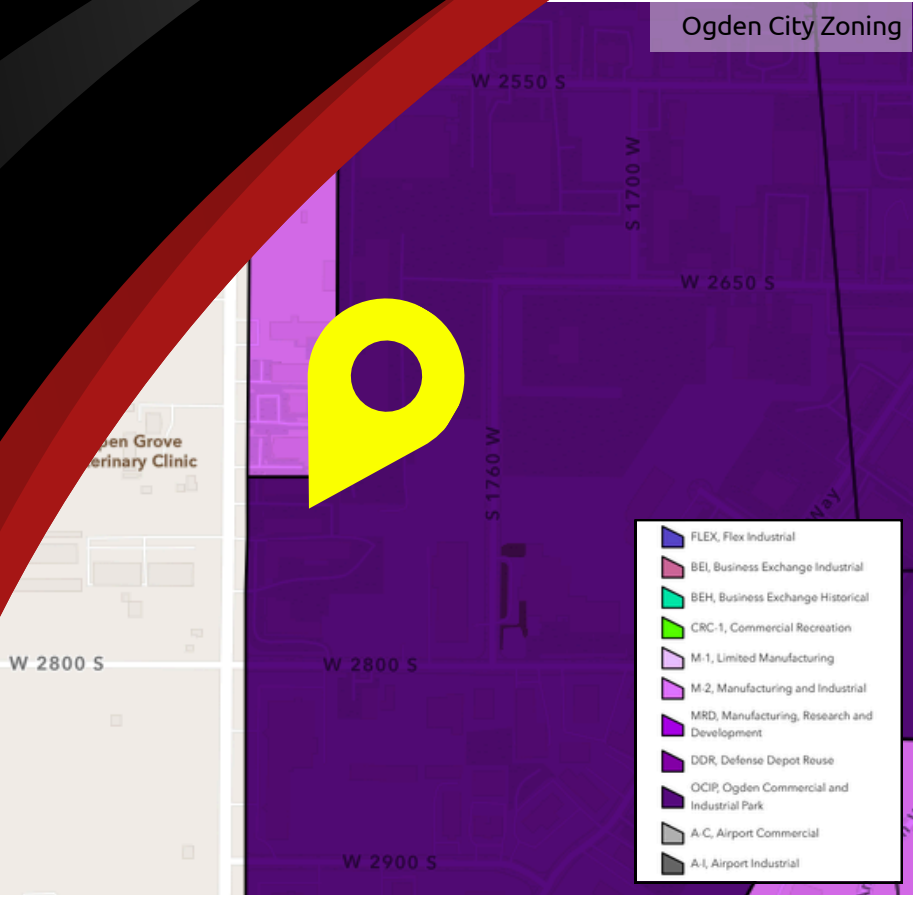


# Floor Plan



**Main Floor = 5,000 Sq Ft**  
**Second Floor = 5,000 Sq Ft**  
**Total = 10,000 Sq Ft**





2736 S 1900 W #A  
OGDEN, UTAH 84401

W 2100 S St



**SITE**

1900 West

2550 South

Ogden Commercial Industrial Park

INTERSTATE 15

INTERSTATE 84

Industrial Drive

Midland Drive

Pennsylvania Avenue

FAIRMOUNT PARK A

West Haven Industrial Park

1900 West

Hinckley Drive

Ogden-Hinckley Regional Airport



**Aaron McCrady**  
801-953-7012  
aaroncrest@gmail.com



**Garrett Pierson**  
801-644-1361  
g@crestutah.com





# Contact Us



**Aaron McCrady**

801-953-7012

aaroncrest@gmail.com



**Garrett Pierson**

801-644-1361

g@crestutah.com



[www.crestutah.com](http://www.crestutah.com)

968 Chambers St #2,

South Ogden UT 84403

801-476-9500

