

MOVE-IN READY DENTAL OFFICE - FOR SUBLEASE



2950 S GESSNER ROAD, SUITE 250, HOUSTON, TEXAS



PROPERTY FEATURES

- ▶ ±4,040 SF Move-In Ready Dental Office Available
- ▶ Sublease Term Through 02/01/2034
- ▶ Six (6) Operatories With Six (6) Chairs
- ▶ Trade Fixtures In Place
- ▶ Gas Lines In Place
- ▶ Parking Ratio: 5/1,000 RSF - Can Accommodate Dense Users
- ▶ Recent Capital Improvements Include: Common Area Elevator Cab Updates and Remodeled Restrooms
- ▶ Proximity to Multiple Major Thoroughfares
- ▶ **PLEASE CONTACT BROKER FOR PRICING**

CONTACT INFORMATION

William Alcorn

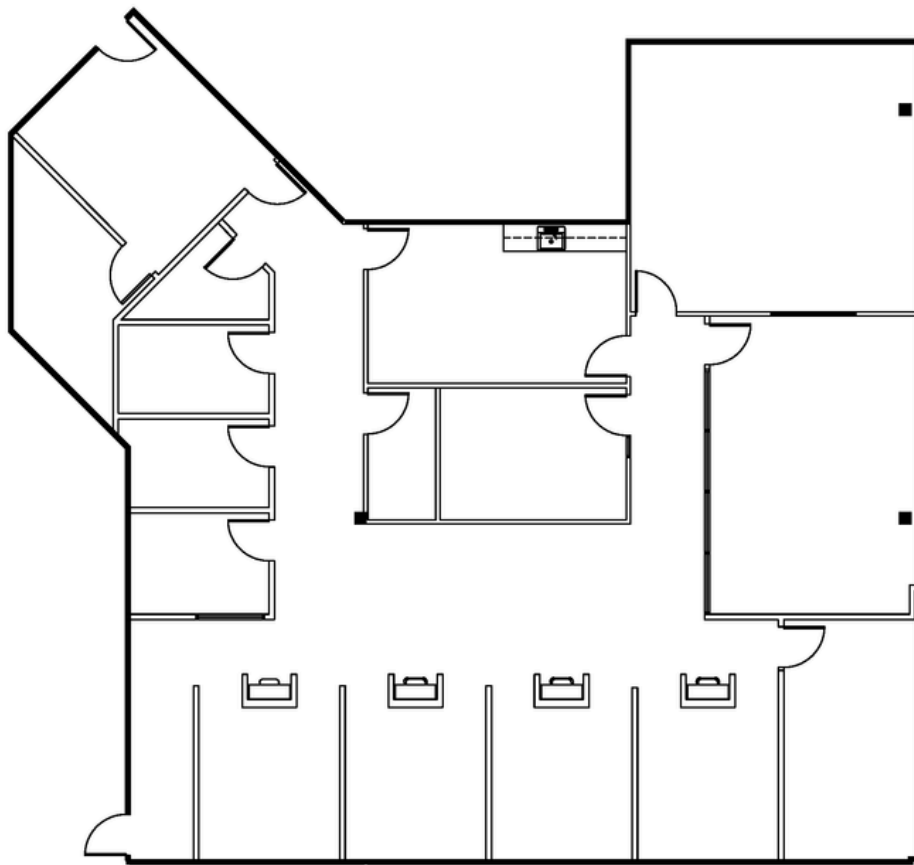
william.alcorn@finialgroup.com
(713) 814-3798

Christian Villarreal

christian.villarreal@finialgroup.com
(713) 814-3873

Jason Gibbons

jason.gibbons@finialgroup.com
(713) 422-2087

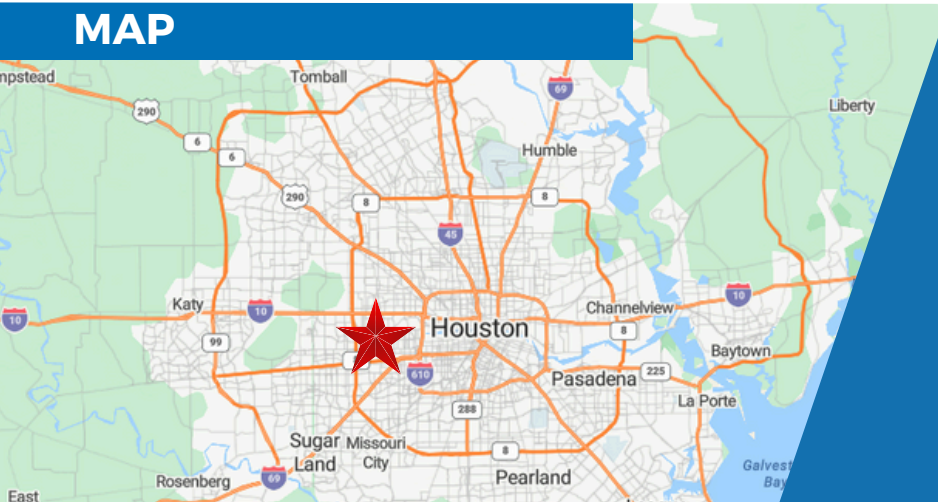


2950 S GESSNER ROAD, SUITE 250, HOUSTON, TEXAS



The Westchase District provides easy access to four major highways, making it Houston's most accessible commercial district. At 2950 S Gessner, you can lease premium office, dental, or salon space, ensuring minimal commute times and maximum convenience.

MAP



CONTACT INFORMATION

William Alcorn

william.alcorn@finalgroup.com
(713) 814-3798

Christian Villarreal

christian.villarreal@finalgroup.com
(713) 814-3873

Jason Gibbons

jason.gibbons@finalgroup.com
(713) 422-2087

