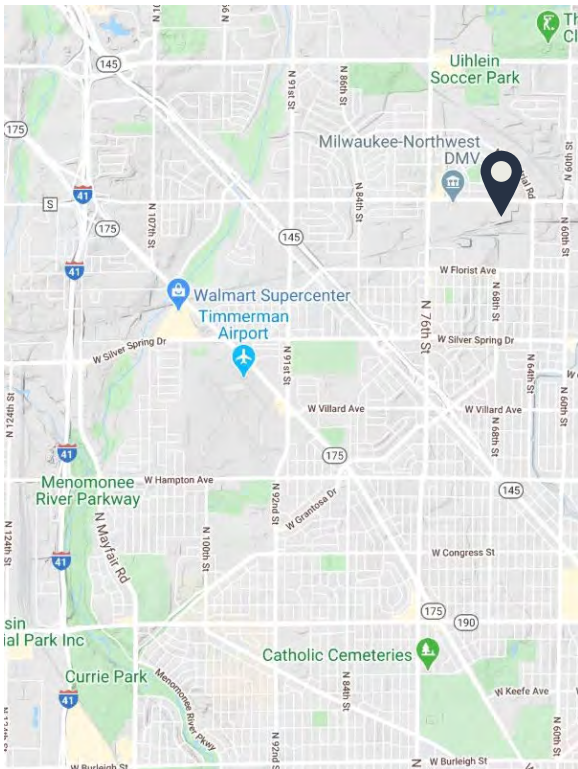


MILL RUN BUSINESS CENTER

6601-6671 W MILL ROAD | MILWAUKEE, 53218



SITE DETAILS

**BUILDING A
AVAILABILITY** **33,614 SF**
+/- 14,031 SF

**BUILDING B
AVAILABILITY** **28,975 SF**
+/- 20,238 SF

**BUILDING C
AVAILABILITY** **22,430 SF**
+/- 7,850 SF

**BUILDING D
AVAILABILITY** **18,570 SF**
Fully Leased

**BUILDING E
AVAILABILITY** **22,746 SF**
Fully Leased

OPEX **\$2.92 PSF (est.)**

LEASE RATE **\$5.50 PSF NNN**

FEATURES

- Professionally managed business center containing 5-single story, flex buildings
- Dock & Drive In loading
- Flexible floor plans with ample parking
- Clear heights ranging from 14.5'-17.5'
- Zoned IL-1
- Located on The Blue Line bus route

Current tenants will receive \$1,000 if they refer a new tenant at the building who signs a minimum three (3) year lease

**B R E N N A N
I N V E S T M E N T
G R O U P**

Conor Alban
Colliers International
414 276 9500
conor.albian@colliers.com

Brett Garceau
Colliers International
414 278 6878
brett.garceau@colliers.com

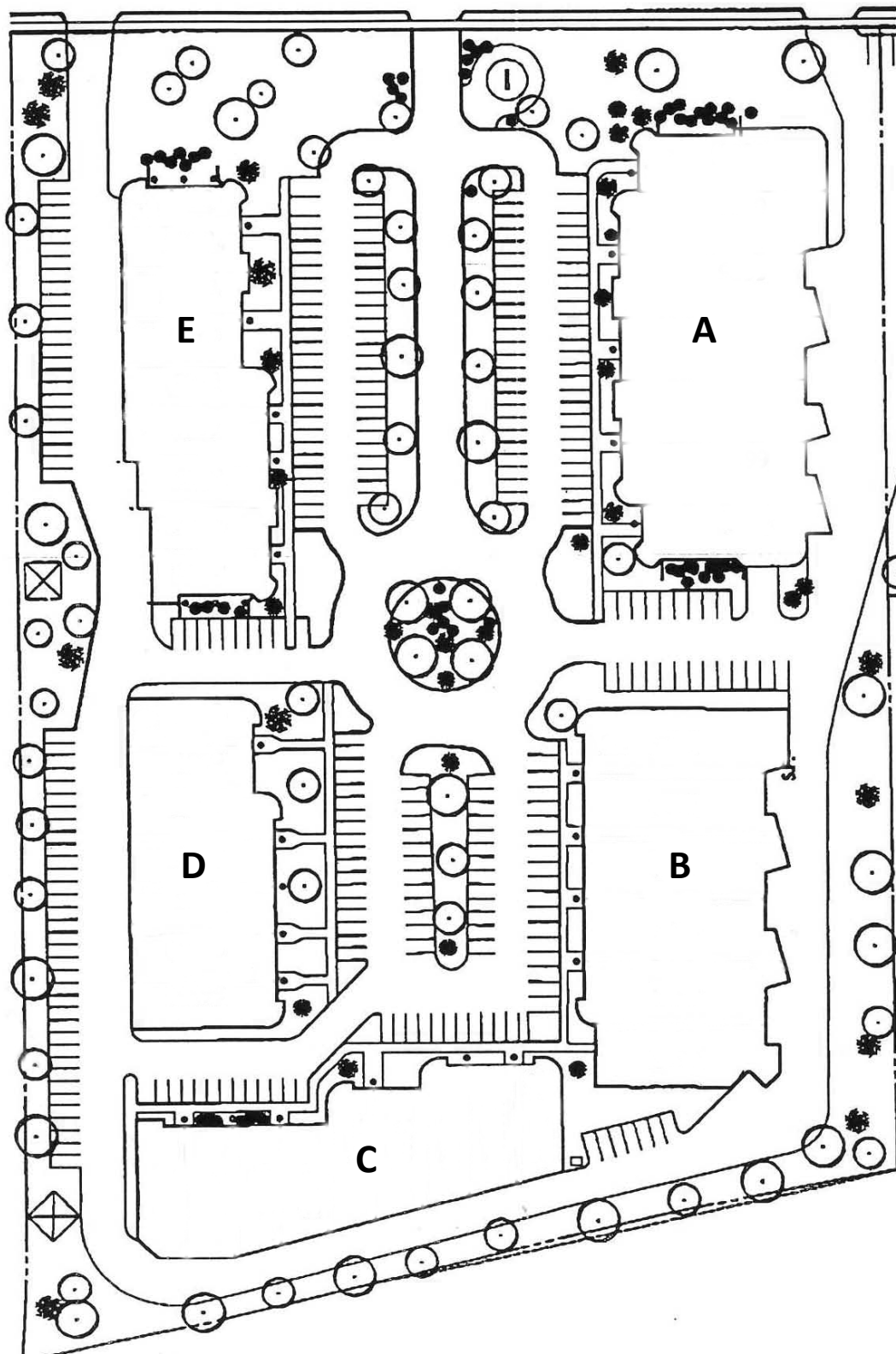
Steve Sewart
Colliers International
414 278 6823
steve.sewart@colliers.com

MILL RUN BUSINESS CENTER

6601-6671 W MILL ROAD | MILWAUKEE, 53218

B

SITE PLAN



B R E N N A N
I N V E S T M E N T
G R O U P

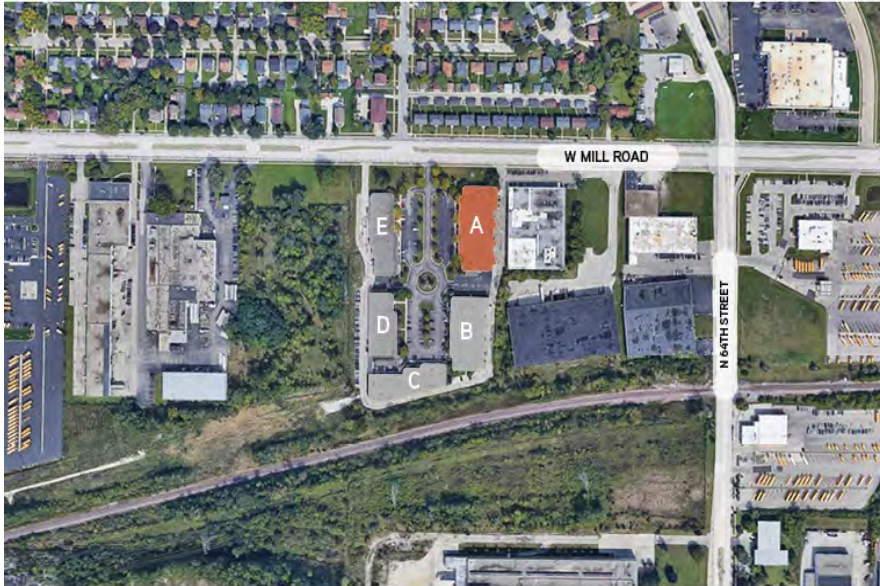
Conor Alban
Colliers International
414 276 9500
conor.albian@colliers.com

Brett Garceau
Colliers International
414 278 6878
brett.garceau@colliers.com

Steve Sewart
Colliers International
414 278 6823
steve.sewart@colliers.com

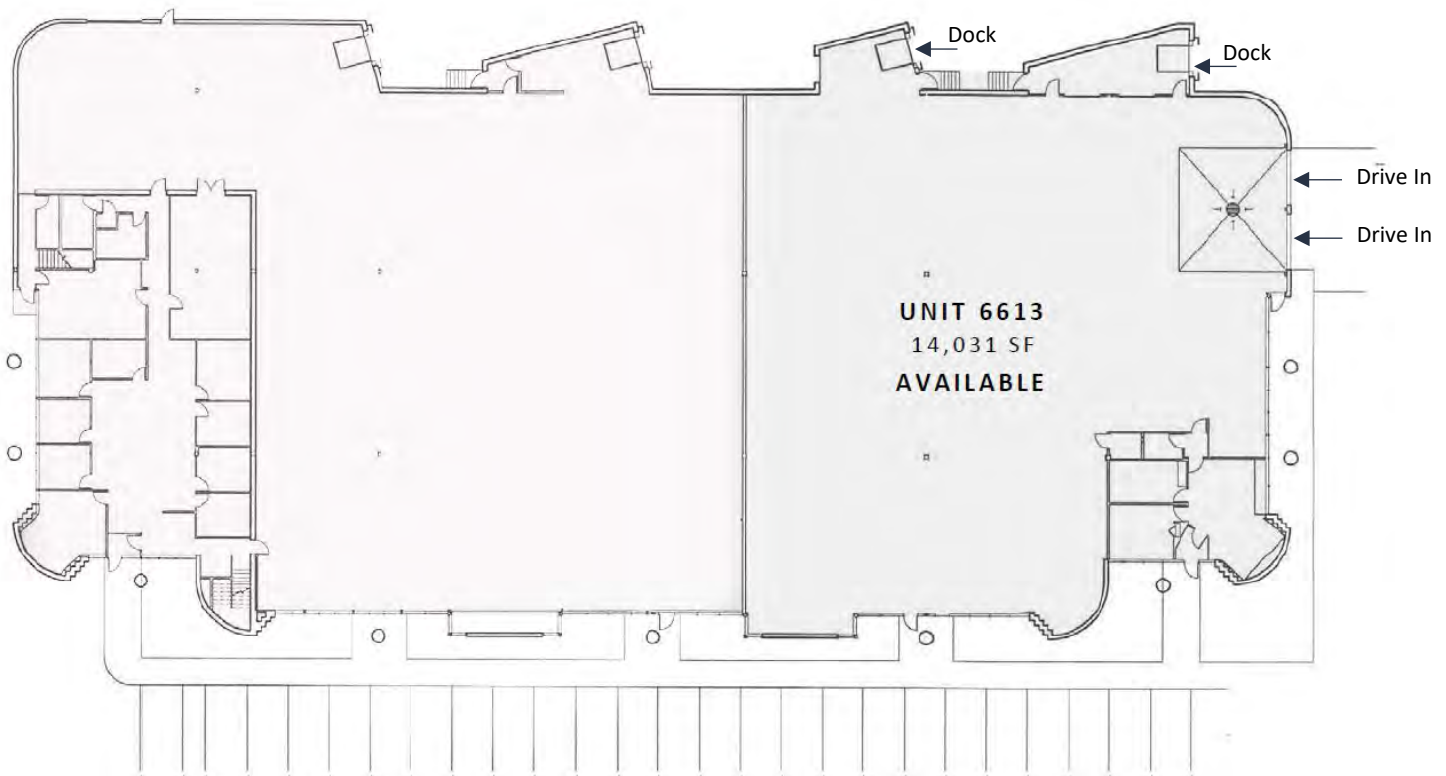
BUILDING A

6601 - 6613 W MILL ROAD | MILWAUKEE, WI 53218



UNIT 6613 - FEATURES

Available SF	+/- 14,031 SF
Office	+/- 1,000 SF
Warehouse SF	+/- 13,031 SF
Loading	(2) Drive-in doors, (2) Docks
Clear Height	+/- 17.5'



B R E N N A N
I N V E S T M E N T
G R O U P

Conor Alban
Colliers International
414 276 9500
conor.alban@colliers.com

Brett Garceau
Colliers International
414 278 6878
brett.garceau@colliers.com

Steve Sewart
Colliers International
414 278 6823
steve.sewart@colliers.com

BUILDING B

6615 - 6625 W MILL ROAD | MILWAUKEE, WI 53218

B

UNIT 6621, 6623 & 6625 – COMBINED UNITS SPECS

Available SF	+/- 20,238 SF
Office	+/- 1,650 SF
Warehouse SF	+/- 18,588 SF
Loading	(3) Docks
Clear Height	+/- 17'

UNIT 6621 – FEATURES

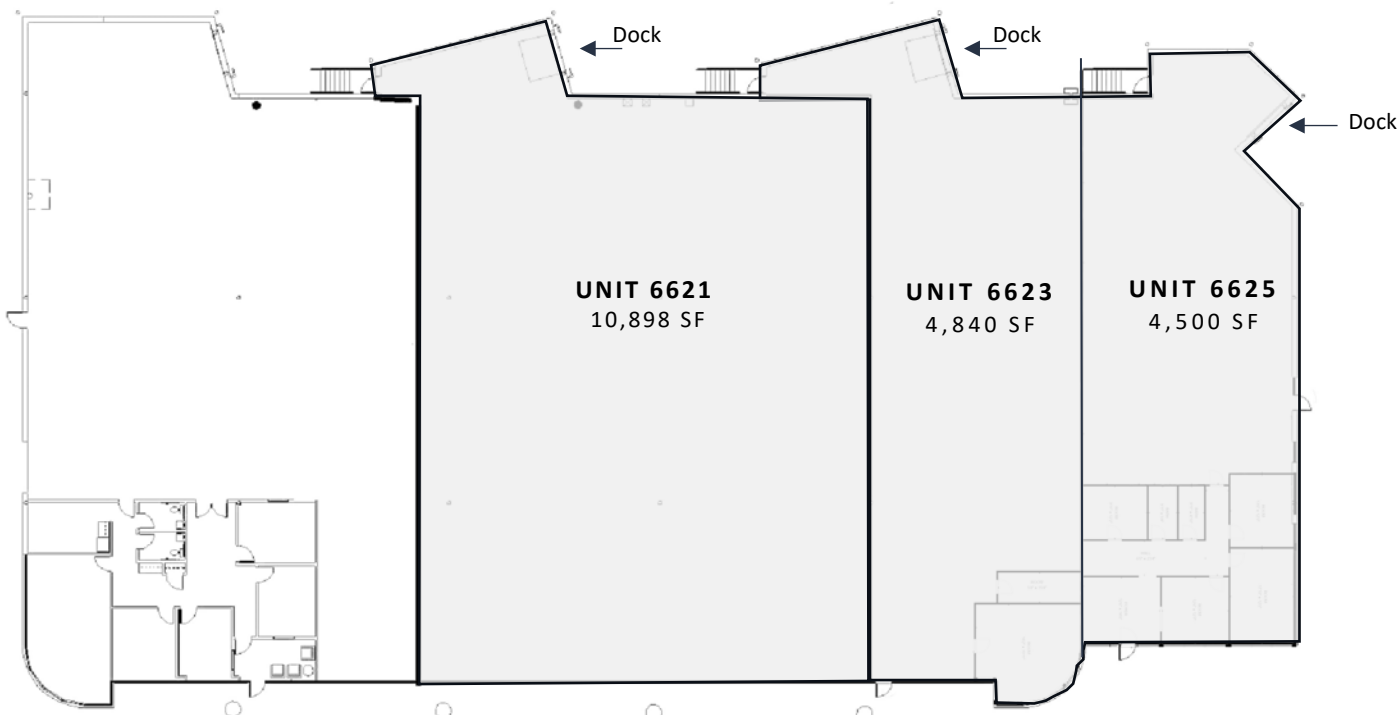
Available SF	+/- 10,898 SF
Warehouse SF	+/- 10,898 SF
Loading	(1) Dock
Clear Height	+/- 17'

UNIT 6623 – FEATURES

Available SF	+/- 4,840 SF
Office	+/- 448 SF
Warehouse SF	+/- 4,392 SF
Loading	(1) Dock
Clear Height	+/- 17'

UNIT 6625 – FEATURES

Available SF	+/- 4,500 SF
Office	+/- 1,202 SF
Warehouse SF	+/- 3,298 SF
Loading	(1) Dock
Clear Height	+/- 17'



BUILDING C

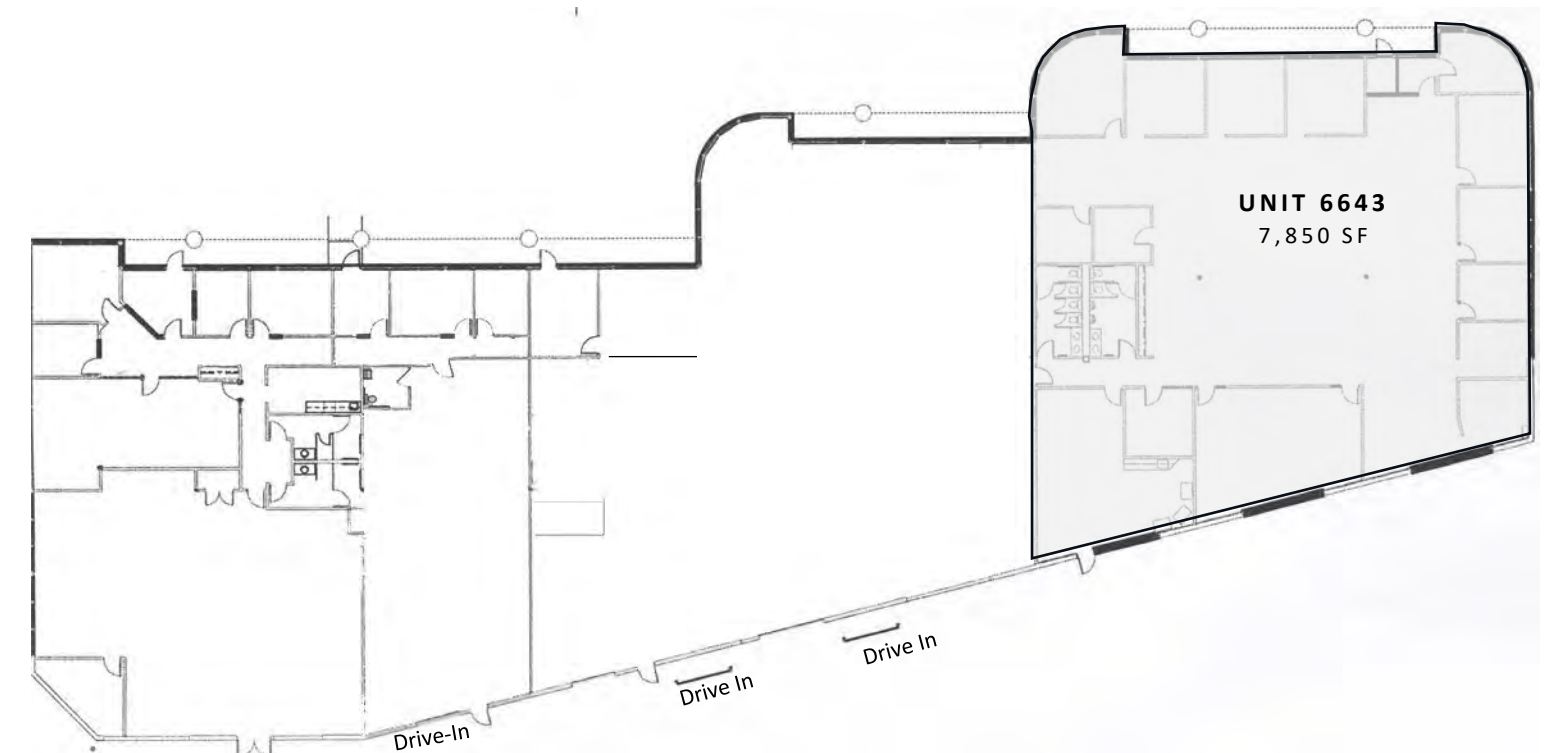
6629-6643 W MILL ROAD | MILWAUKEE, WI 53218



UNIT 6643 – FEATURES

Available SF +/- 7,850 SF

Office SF +/- 7,850 SF



B R E N N A N
I N V E S T M E N T
G R O U P

Conor Alban
Colliers International
414 276 9500
conor.albian@colliers.com

Brett Garceau
Colliers International
414 278 6878
brett.garceau@colliers.com

Steve Sewart
Colliers International
414 278 6823
steve.sewart@colliers.com

State Of Wisconsin | Disclosure to Non-Residential Customers

Prior to negotiating on your behalf the Brokerage firm, or an agent associated with the firm, must provide you the following disclosure statement:

Broker Disclosure to Customers

You are a customer of the brokerage firm (hereinafter Firm). The Firm is either an agent of another party in the transaction or a subagent of another firm that is the agent of another party in the transaction. The broker or a salesperson acting on behalf of the Firm may provide brokerage services to you. Whenever the Firm is providing brokerage services to you, the Firm and its brokers and salespersons (hereinafter Agents) owe you, the customer, the following duties:

- The duty to provide brokerage services to you fairly and honestly.
- The duty to exercise reasonable skill and care in providing brokerage services to you.
- The duty to provide you with accurate information about market conditions with a reasonable time if you request it, unless disclosure of the information is prohibited by law.
- The duty to disclose to you in writing certain Material Adverse Facts about a property, unless disclosure of the information is prohibited by law.
- The duty to protect your confidentiality. Unless the law requires it, the Firm and its Agents will not disclose your confidential information or the confidential information to other parties.
- The duty to safeguard trust funds and other property held by the Firm or its Agents.
- The duty, when negotiating, to present contract proposals in an objective and unbiased manner and disclose the advantages and disadvantages of the proposals.

Please review this information carefully. An Agent of the Firm can answer your questions about brokerage services, but if you need legal advice, tax advice or a professional home inspection contact an attorney, tax advisor, or home inspector. This disclosure is required by section 452.135 of the Wisconsin statutes and is for information only. It is a plain-language summary of the duties owed to a customer under section 452.133 (1) of the Wisconsin statutes.

Confidentiality Notice to Customers

The Firm and its Agents will keep confidential any information given to the Firm and its Agents in confidence, or any information obtained by the Firm and its Agents that a reasonable person would want to be kept confidential, unless the information must be disclosed by law or you authorize the Firm to disclose particular information. The Firm and its Agents shall continue to keep the information confidential after the Firm is no longer providing brokerage services to you.

The following information is required to be disclosed by law:

1. Material Adverse Facts, as defined in section 452.01 (5g) of the Wisconsin Statutes.
2. Any facts known by the Firm or its Agents that contradict any information included in a written inspection report on the property or real estate that is the subject of the transaction.

To ensure that the Firm and its Agents are aware of what specific information you consider confidential, you may list that information below, or provide that information to the Firm and its Agents by other means. At a later time, you may also provide the Firm and its Agents with other information you consider to be confidential.

Confidential information: _____

Non-Confidential information: (The following information may be disclosed by the Firm and its Agents): _____

(Insert information you authorize to be disclosed, such as financial qualification information.)

Definition of Material Adverse Facts

A "Material Adverse Fact" is defined in Wis. Stat. 452.01 (5g) as an Adverse Fact that a party indicates is of such significance, or that is generally recognized by a competent licensee as being of such significance to a reasonable party, that it affects or would affect the party's decision to enter into a contract or agreement concerning a transaction or affects or would affect the party's decision about the terms of such a contract or agreement.

An "Adverse" fact is defined in Wis. Stat. 452.01 (1e) as a condition or occurrence that a competent licensee generally recognizes will significantly and adversely affect the value of the property, significantly reduce the structural integrity of improvements to real estate, or present a significant health risk to occupants of the property; or information that indicates that a party to a transaction is not able to or does not intend to meet his or her obligations under a contract or agreement made concerning the transaction.

Sex Offender Registry

Notice: You may obtain information about the sex offender registry and persons registered with the registry by contacting the Wisconsin Department of Corrections on the Internet at <http://offender.doc.state.wi.us/public/>

No representation is made as to the legal validity of any provision or the adequacy of any provision in any specific transaction.

Copyright 2016 by Wisconsin REALTORS Association.

