



# 1400 COMPUTER DRIVE

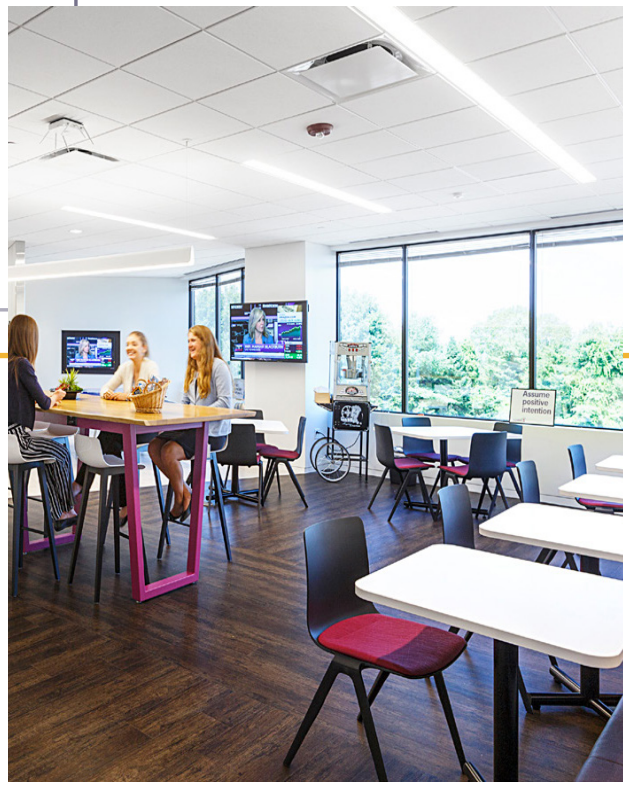
WESTBOROUGH, MA 01581



FIRST CLASS OFFICE SPACE AVAILABLE FOR LEASE  
2,725-42,000 SF



# 1400 COMPUTER DRIVE



# PROPERTY FEATURES

1400 Computer Drive is a top-tier quality, three-story, 72,291 SF first class office building on the Route 9 corridor in Westborough.

Positioned on an elevated site, 1400 Computer Drive has exceptional high profile visibility and great corporate signage opportunities. Flexible and efficient floor plates accommodate single and multi-tenant users.

Minutes from I-495 and the Mass Pike, it features a sun lit two-story atrium, superior finishes, a newly renovated fitness room with lockers and showers, modern tenant lounge, basement-level storage, and abundant parking. It is conveniently located in the midst of numerous restaurants, retail stores, and hotels.

Contemporary and convenient, 1400 Computer Drive is ideal for high tech and business tenants. This first-class building's features, location and visibility make it best in class.

## AVAILABILITIES

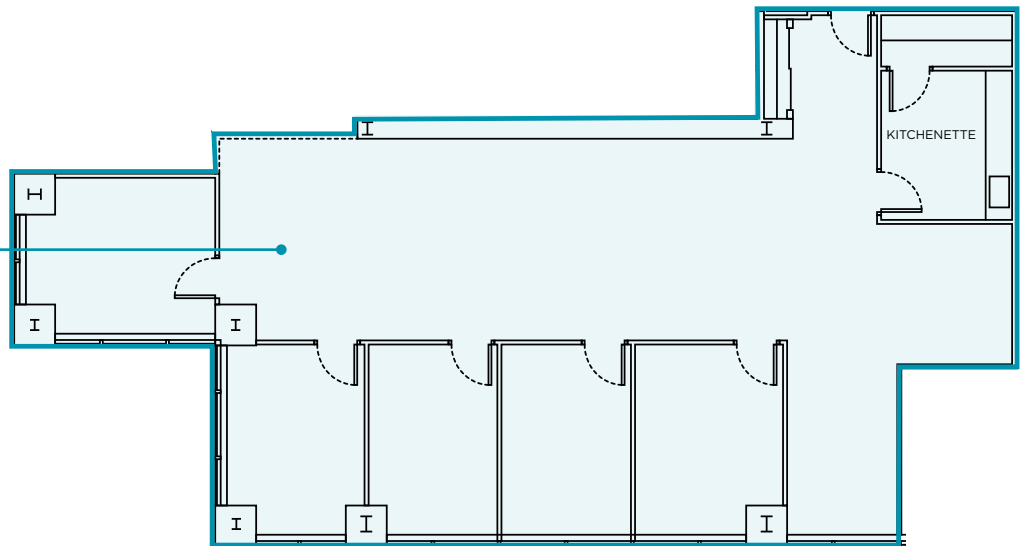
SUITE 100:	2,725 RSF
SUITE 120:	4,595 RSF
SUITE 200:	7,788 RSF
SUITE 203:	4,730 RSF
SUITE 300-301:	6,588 RSF - 22,140 RSF

## BUILDING SPECIFICATIONS

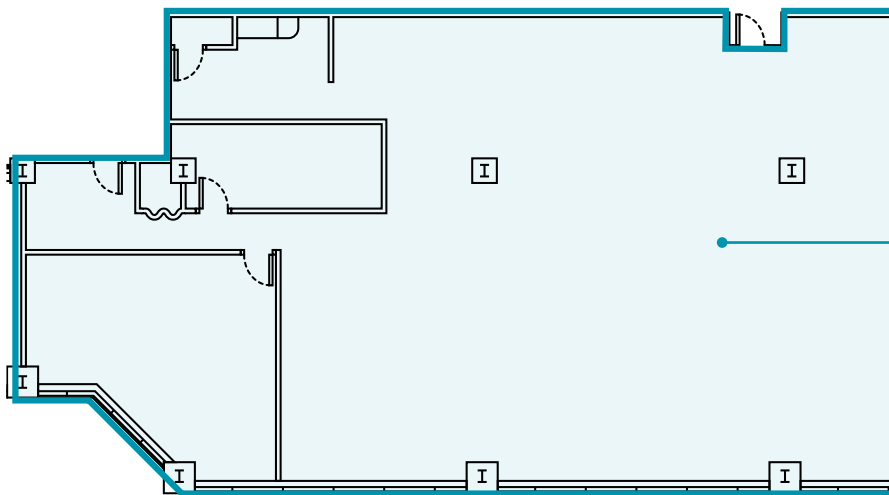
- **Building Size:** 72,291 SF
- **Acreage:** 7.39 Acres
- **Stories:** 3
- **Available SF:** 2,725 - 42,000 SF
- **Year Built:** 1991; Common Areas Renovated in 2017
- **Elevators:** 2 Passenger
- **Parking Ratio:** 3.47/1,000 SF
- **Utilities:**
  - Gas: Eversource
  - Electric: National Grid
  - Water & Sewer: Town of Westborough
- **Service Providers:** Verizon FiOs, Spectrum & Lighttower
- **Shipping & Receiving:** Full Access Loading Dock equipped with motorized door.
- **On site Amenities:**
  - Fitness center with lockers and showers
  - Tenant Lounge Area



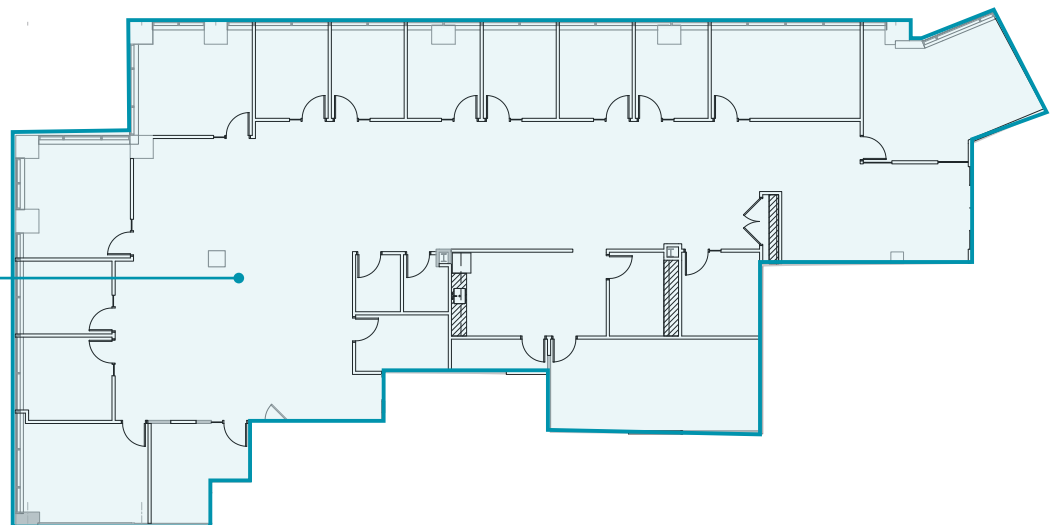
**SUITE 100**  
**2,725 RSF**



**SUITE 120**  
**4,595 RSF**



**SUITE 200**  
**7,788 RSF**



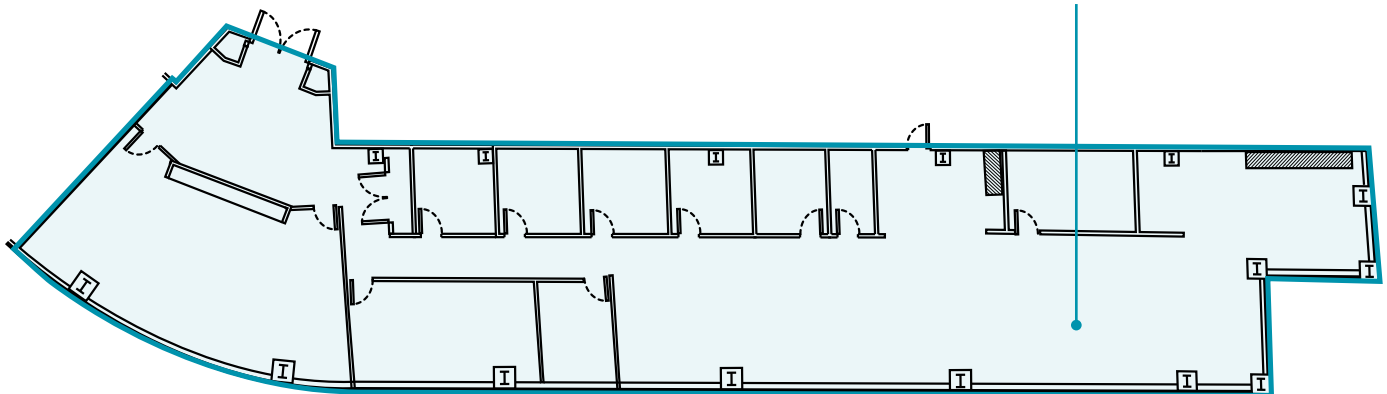


**SUITE 300**  
**15,552 RSF**

**SUITE 300**  
**15,552 RSF**

Plug and Play Opportunity;  
Furniture can be made available!

**SUITE 301**  
**6,588 RSF**











CUSHMAN &  
WAKEFIELD



GE Healthcare



Middlesex  
Savings Bank

Right there with you

MELLON



PARK PLACE  
TECHNOLOGIES

OWEN O'LEARY'S



DOUBLETREE  
BY HILTON™



Next Generation  
Children's Centers

9

1400 COMPUTER DRIVE



LabCorp  
Laboratory Corporation of America



extended  
STAY  
AMERICA

El Basha



MARVELL

amazon



astellas





## FOR MORE INFORMATION:

### **PETE WHORISKEY**

+1 617 204 4138

[pete.whoriskey@cushwake.com](mailto:pete.whoriskey@cushwake.com)

### **RACHEL IGOE**

+1 617 279 4547

[rachel.igoe@cushwake.com](mailto:rachel.igoe@cushwake.com)

### **GEORGE O'CONNOR**

+1 617 279 4544

[george.oconnor@cushwake.com](mailto:george.oconnor@cushwake.com)

### **THOMAS COSTELLO**

+1 617 219 7795

[thomas.costello@cushwake.com](mailto:thomas.costello@cushwake.com)

©2025 Cushman & Wakefield. All rights reserved. The information contained in this communication is strictly confidential. This information has been obtained from sources believed to be reliable but has not been verified. NO WARRANTY OR REPRESENTATION, EXPRESS OR IMPLIED, IS MADE AS TO THE CONDITION OF THE PROPERTY (OR PROPERTIES) REFERENCED HEREIN OR AS TO THE ACCURACY OR COMPLETENESS OF THE INFORMATION CONTAINED HEREIN, AND SAME IS SUBMITTED SUBJECT TO ERRORS, OMISSIONS, CHANGE OF PRICE, RENTAL OR OTHER CONDITIONS, WITHDRAWAL WITHOUT NOTICE, AND TO ANY SPECIAL LISTING CONDITIONS IMPOSED BY THE PROPERTY OWNER(S). ANY PROJECTIONS, OPINIONS OR ESTIMATES ARE SUBJECT TO UNCERTAINTY AND DO NOT SIGNIFY CURRENT OR FUTURE PROPERTY PERFORMANCE.



**CUSHMAN &  
WAKEFIELD**