

FOR LEASE: 5,577 SF INDUSTRIAL UNIT



74-A W. Cochran St., Simi Valley, CA 93065

- **5,577 SF Unit Available**
- **Ground Level Loading**
- **400 A, 277/480 Volt Power**
- **Modern Professional Business Park**
- **Easy 118 Freeway Access**
- **Monument Signage Available**



EXCLUSIVE AGENT:

PAUL FORBAT

(805) 328-6348 o | (818) 430-1590 m

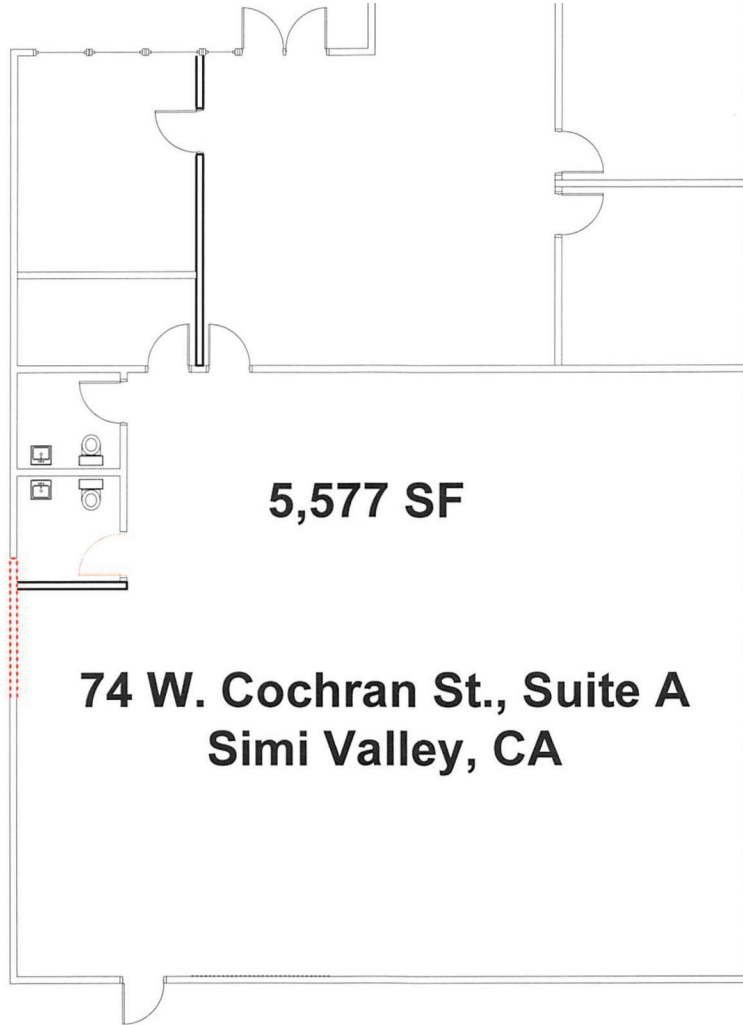
paul@pcirealty.com

Lic. 01097663

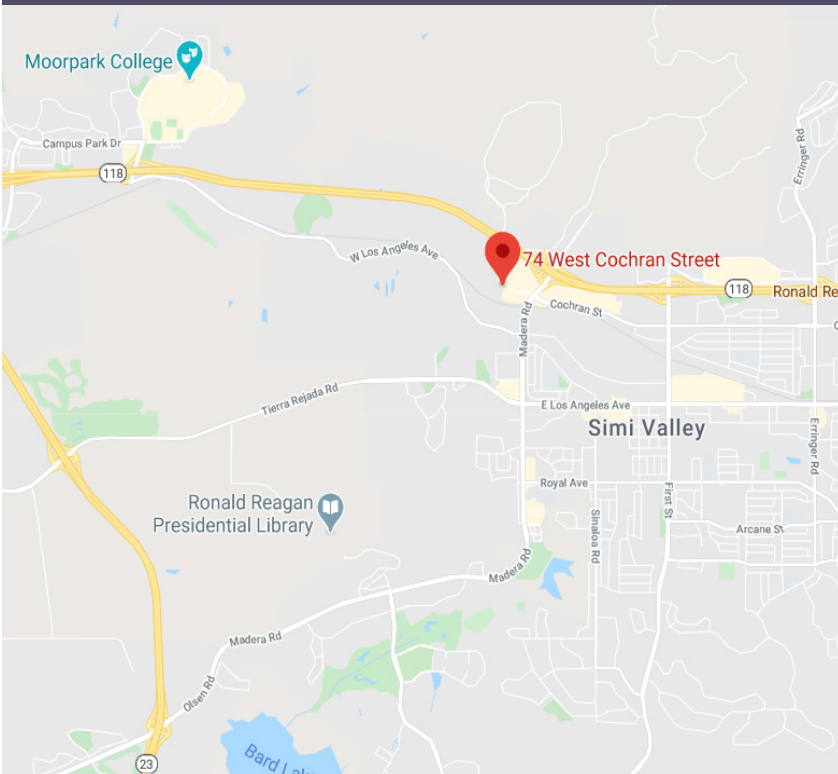


Disclaimer: Information contained herein is obtained from sources considered reliable but is not verified; the property owner and agent make no representation or warranty regarding its accuracy, express or implied. Prospective purchasers and lessees are responsible to conduct their own independent due diligence regarding the property and its suitability for their intended use, and are advised to consult with qualified professionals regarding tax, legal and other consequences of any transaction. All information is subject to errors, omissions, changes of price, terms or other conditions, prior sale, lease or financing, or withdrawal from the market without notice. All measurements are approximate. Logos are intended only to show the proximity of select businesses to the subject property, and do not imply endorsement. Offered for sale or lease exclusively by PCI Commercial Realty Group, Lic. 01888984.

FOR LEASE: 5,577 SF INDUSTRIAL UNIT



74-A W. Cochran St., Simi Valley, CA 93065



EXCLUSIVE AGENT:

PAUL FORBAT

(805) 328-6348 o | (818) 430-1590 m

paul@pcirealty.com

Lic. 01097663

PCI Commercial
Realty Group

Disclaimer: Information contained herein is obtained from sources considered reliable but is not verified; the property owner and agent make no representation or warranty regarding its accuracy, express or implied. Prospective purchasers and lessees are responsible to conduct their own independent due diligence regarding the property and its suitability for their intended use, and are advised to consult with qualified professionals regarding tax, legal and other consequences of any transaction. All information is subject to errors, omissions, changes of price, terms or other conditions, prior sale, lease or financing, or withdrawal from the market without notice. All measurements are approximate. Logos are intended only to show the proximity of select businesses to the subject property, and do not imply endorsement. Offered for sale or lease exclusively by PCI Commercial Realty Group, Lic. 01888984.