

14301

SULLYFIELD CIRCLE, CHANTILLY, VA 20151



PROPERTY FEATURES (14301)

- Zoned I-5; Fairfax County
- Excellent window line
- Abundant parking
- Stable ownership

LOCATION

- Intersection of Routes 28 and 50 in Chantilly, VA
- 5 Miles to Dulles Airport, Dulles Toll Road, and Route 66
- Surrounded by numerous shopping, dining, and hotel options

FOR MORE INFORMATION, PLEASE CONTACT:

Jon Lawrence

+1 703 847 2787

jon.lawrence@cushwake.com

Ed Zaptin

+1 703 847 2730

ed.zaptin@cushwake.com

Shane Keeton

+1 434 249 1416

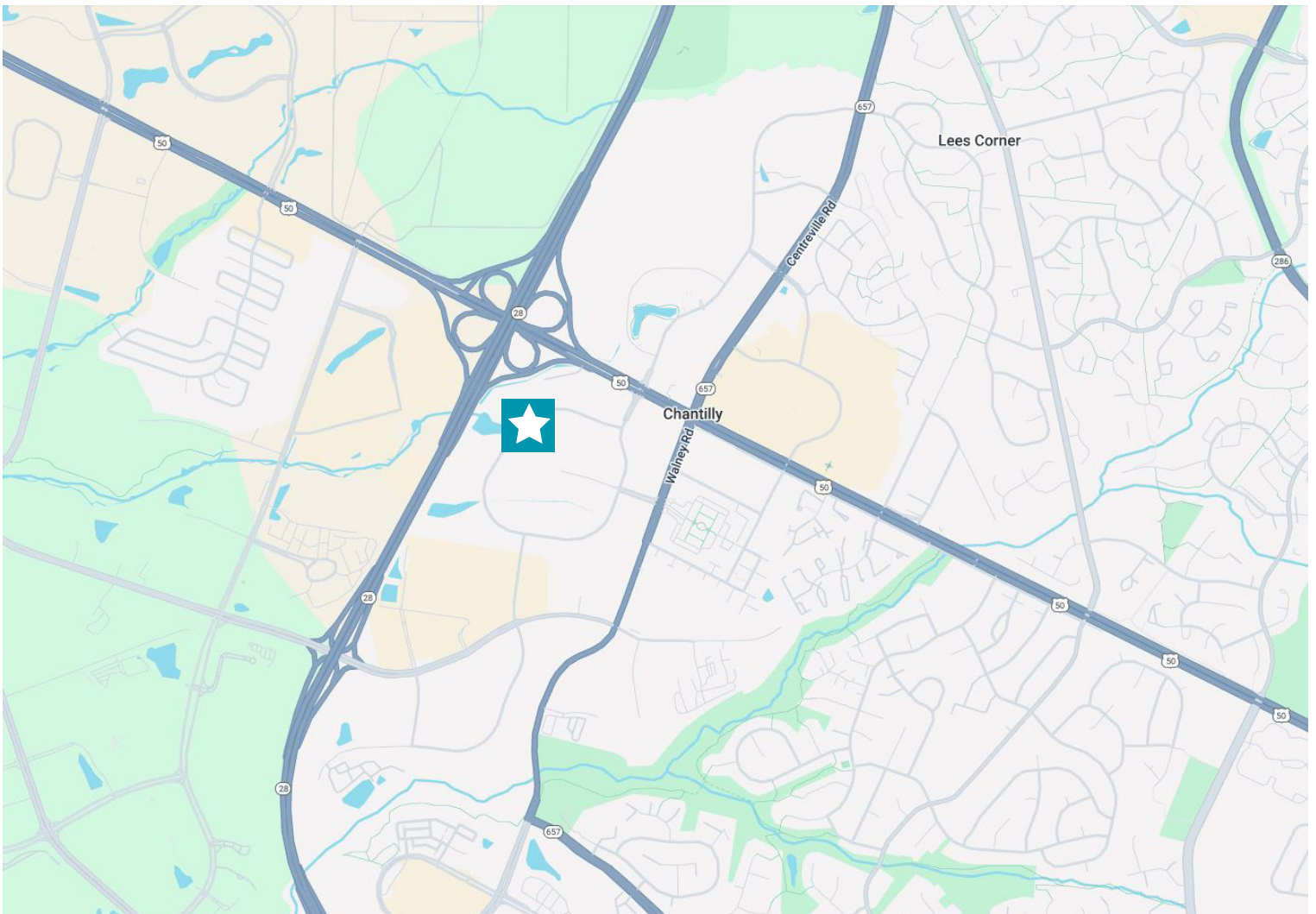
shane.keeton@cushwake.com



14301

SULLYFIELD CIRCLE, CHANTILLY, VA 20151

LOCATION MAP



FOR MORE INFORMATION, PLEASE CONTACT:

Jon Lawrence

+1 703 847 2787

jon.lawrence@cushwake.com

Ed Zaptin

+1 703 847 2730

ed.zaptin@cushwake.com

Shane Keeton

+1 434 249 1416

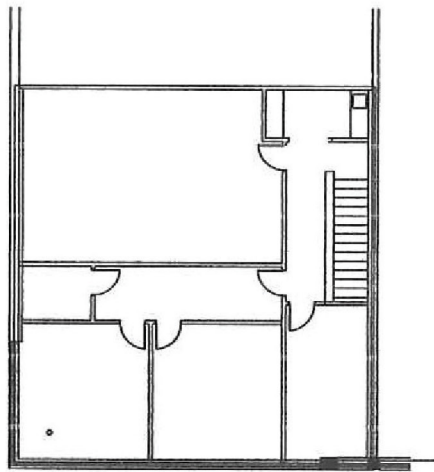
shane.keeton@cushwake.com



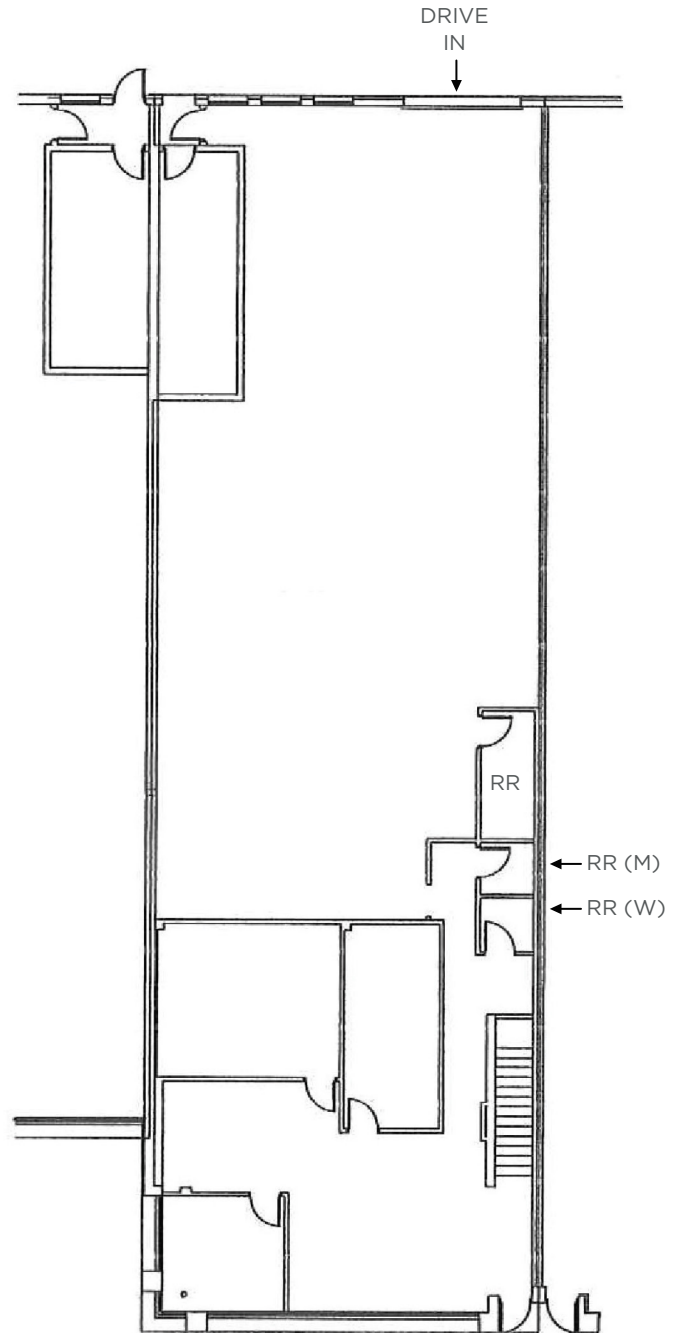
14301

SULLYFIELD CIRCLE, CHANTILLY, VA 20151

14301 F - 6,560 RSF



MEZZ F



BAY F

FOR MORE INFORMATION, PLEASE CONTACT:

Jon Lawrence

+1 703 847 2787

jon.lawrence@cushwake.com

Ed Zaptin

+1 703 847 2730

ed.zaptin@cushwake.com

Shane Keeton

+1 434 249 1416

shane.keeton@cushwake.com



©2024 Cushman & Wakefield. All rights reserved. The information contained in this communication is strictly confidential. This information has been obtained from sources believed to be reliable but has not been verified. NO WARRANTY OR REPRESENTATION, EXPRESS OR IMPLIED, IS MADE AS TO THE CONDITION OF THE PROPERTY (OR PROPERTIES) REFERENCED HEREIN OR AS TO THE ACCURACY OR COMPLETENESS OF THE INFORMATION CONTAINED HEREIN, AND SAME IS SUBMITTED SUBJECT TO ERRORS, OMISSIONS, CHANGE OF PRICE, RENTAL OR OTHER CONDITIONS, WITHDRAWAL WITHOUT NOTICE, AND TO ANY SPECIAL LISTING CONDITIONS IMPOSED BY THE PROPERTY OWNER(S). ANY PROJECTIONS, OPINIONS OR ESTIMATES ARE SUBJECT TO UNCERTAINTY AND DO NOT SIGNIFY CURRENT OR FUTURE PROPERTY PERFORMANCE.