



For Sublease

2782 South Church St, Murfreesboro, TN 37127

 **JLL** SEE A BRIGHTER WAY

Gary Shanks
Executive Vice President
Gary.Shanks@jll.com
+1 615 928 5323

Miller Fitts
Senior Vice President
Miller.Fitts@jll.com
+1 615 928 5324

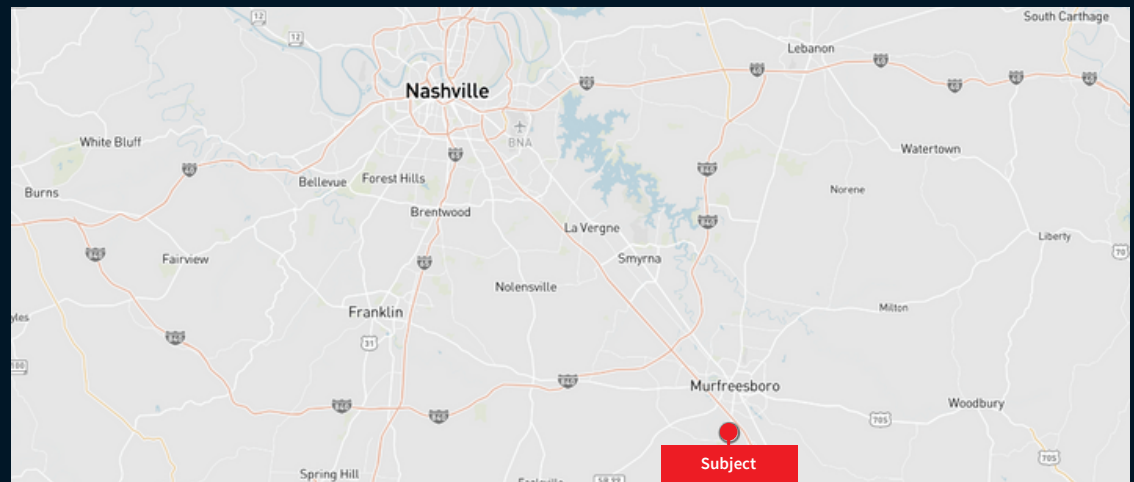
Location Overview

The city of Murfreesboro is located approximately 35 miles southeast of Nashville in Rutherford County. With a population of over 150,000, the city has ranked among the 15 fastest growing cities in the US and first in Tennessee. Murfreesboro is also home to Middle Tennessee State University, which has a student enrollment of over 21,913 students.



Property Overview & Demographics

- Former freestanding bank with 4 lane drive-thru
- Building Size: 3,439 SF
- Drive Thru: 2,500 SF
- Traffic Counts : US 231 (41,600 VPD)
- Monument Signage
- Lease Expiration: February 2028 (2 - five year options)
- Parking: 28 Spaces
- Multiple points of ingress/egress
- Nearby Retailers: Oreilly's, Tire Discounters, AutoZone, FireHouse Subs, Zaxby's Starbucks

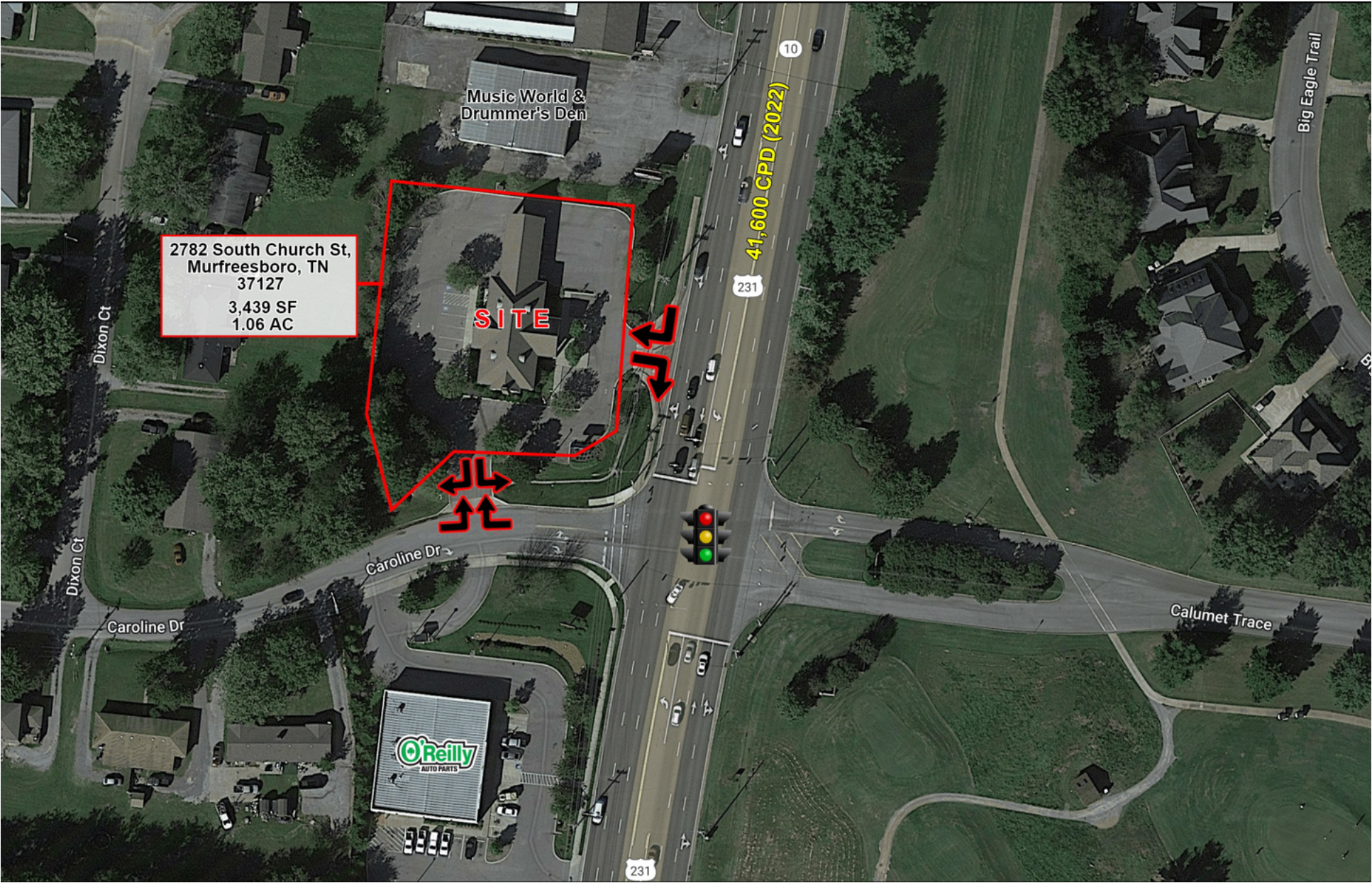


	3 mile	5 miles	7 miles
2023 Total Population	40,337	117,671	181,903
Total Households	15,395	45,282	69,808
2023 Daytime Population	43,591	127,253	176,246
2023 Average HH income	79,425	71,194	75,962

South Overview Church Aerial



South Church Aerial



Property Photos

