



Keegan & Coppin
COMPANY, INC.

FOR LEASE

1818 LA PLAZA
COTATI, CA

Downtown Cotati Retail Space



Go beyond broker.

REPRESENTED BY:

SARA WANN, PARTNER
LIC # 01437146 (707) 664-1400, EXT 308
SWANN@KEEGANCOPPIN.COM



PROPERTY DESCRIPTION



1818 LA PLAZA
COTATI, CA

**DOWNTOWN RETAIL
SPACE FOR LEASE**

PROPERTY INFORMATION

HIGHLIGHTS

- Retail Space Available
- Onsite Employee Parking
- Walkable Downtown Cotati
- Directly Across from La Plaza Park
- Perfect for Retail Goods, Personal Services or Retail Office

RETAIL SPACE

SUITE 104: 1,000+/-sq ft

DESCRIPTION

Open retail area with two private offices, one with a sink, as well as a private restroom.

LEASE TERMS

RATE

\$1.90 psf

LEASE TERMS

Gross Lease

CPI Increases

SITE SIZE

10,984 +/- sq ft

PARKING

Onsite and Street

ZONING

LP: La Plaza

Keegan & Coppin Co., Inc.
1201 N McDowell Boulevard
Petaluma, CA 94954
www.keegancoppin.com
(707) 664-1400

The above information, while not guaranteed, has been secured from sources we believe to be reliable. Submitted subject to error, change or withdrawal. An interested party should verify the status of the property and the information herein.

REPRESENTED BY:

SARA WANN, PARTNER
LIC # 01437146 (707) 664-1400, EXT 308
SWANN@KEEGANCOPPIN.COM



AREA DESCRIPTION

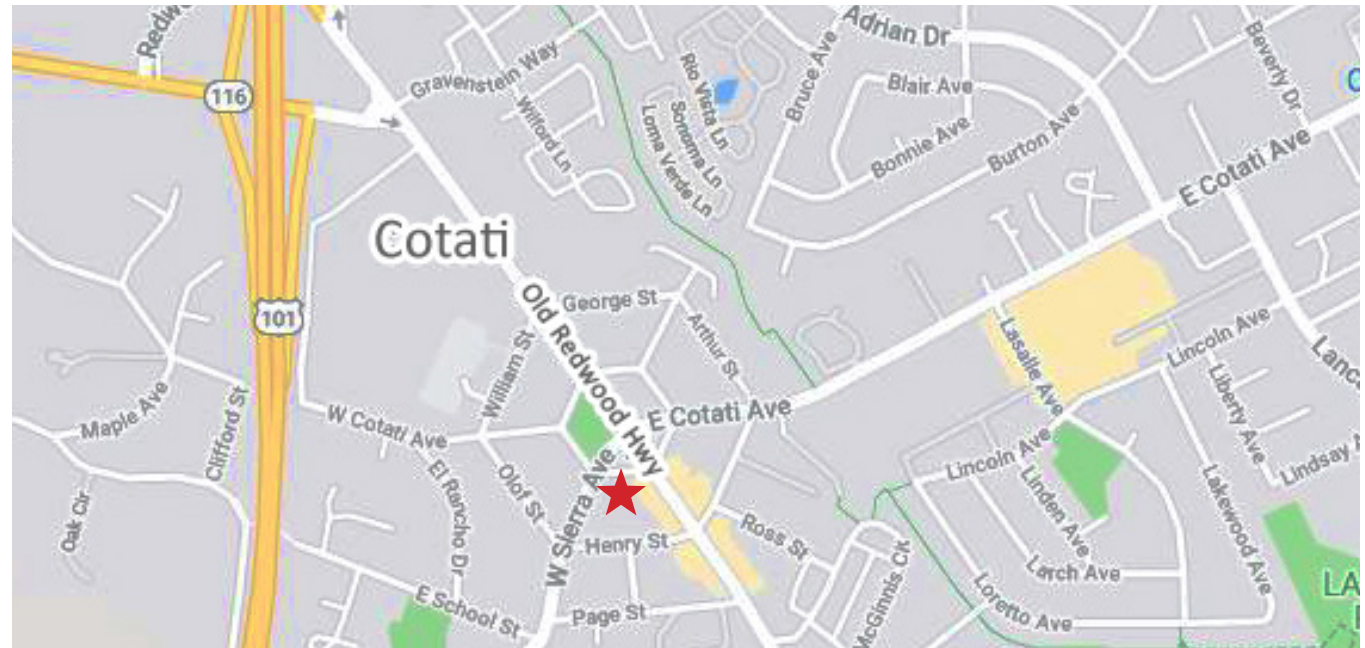


1818 LA PLAZA
COTATI, CA

**DOWNTOWN RETAIL
SPACE FOR LEASE**

DESCRIPTION OF AREA

Cotati is centrally located in Sonoma County, 40 miles north of San Francisco, and is touted as “The Hub of Sonoma County.” Brimming with character, the city is home to a lively mix of the old and new, from rustic barns and historic churches, to a world-renowned Accordion Festival and a summertime Farmers Market. Cotati has an eclectic assortment of restaurants, shops, and services, and boasts one of only two hexagonally designed town plazas in the United States. Down the road is Sonoma State University, one of the most highly rated of the California State Universities.



Keegan & Coppin Co., Inc.
1201 N McDowell Boulevard
Petaluma, CA 94954
www.keegancoppin.com
(707) 664-1400

The above information, while not guaranteed, has been secured from sources we believe to be reliable. Submitted subject to error, change or withdrawal. An interested party should verify the status of the property and the information herein.

REPRESENTED BY:

SARA WANN, PARTNER
LIC # 01437146 (707) 664-1400, EXT 308
SWANN@KEEGANCOPPIN.COM

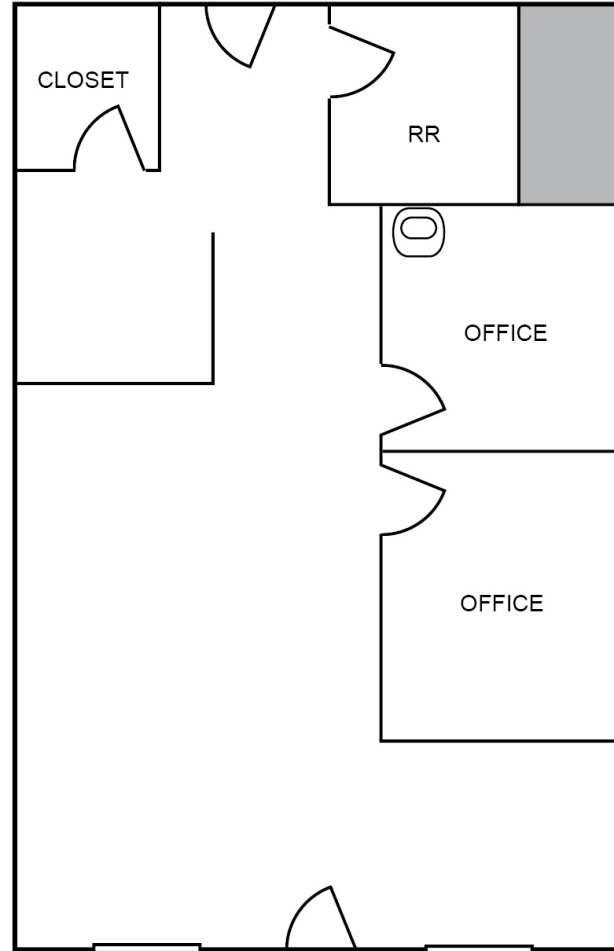


FLOOR PLAN



1818 LA PLAZA
COTATI, CA

**DOWNTOWN RETAIL
SPACE FOR LEASE**



Keegan & Coppin Co., Inc.
1201 N McDowell Boulevard
Petaluma, CA 94954
www.keegancoppin.com
(707) 664-1400

The above information, while not guaranteed, has been secured from sources we believe to be reliable. Submitted subject to error, change or withdrawal. An interested party should verify the status of the property and the information herein.

REPRESENTED BY:

SARA WANN, PARTNER
LIC # 01437146 (707) 664-1400, EXT 308
SWANN@KEEGANCOPPIN.COM



AERIAL MAP



1818 LA PLAZA
COTATI, CA

**DOWNTOWN RETAIL
SPACE FOR LEASE**



PRESENTED BY:

SARA WANN, PARTNER
LIC # 01437146 (707) 664-1400, EXT 308
SWANN@KEEGANCOPPIN.COM

The above information, while not guaranteed, has been secured from sources we believe to be reliable. Submitted subject to error, change or withdrawal. An interested party should verify the status of the property and the information herein.
Map created using ArcGIS® software by Esri. ArcGIS® is the intellectual property of Esri and is used herein under license. Copyright © Esri.