



Location Finders International, Inc.
 9440 Enterprise Dr, Mokena, IL 60448
 (708) 390-1629

1749 S Randall Rd.
 Geneva, IL

RETAIL SPACE AVAILABLE

2,000 & 2,300 SF

MARKET SUMMARY

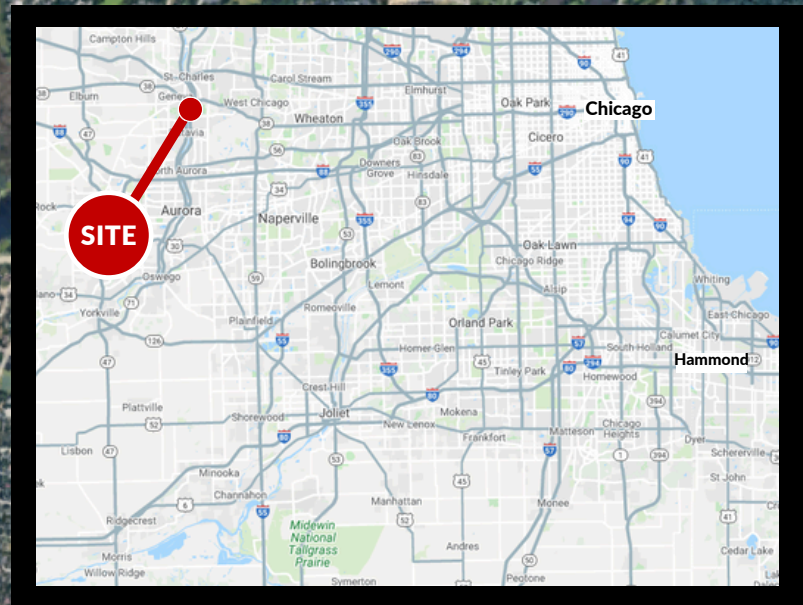
- One of top retail corridors in Chicago MSA
- One mile south of Northwestern Hospital with 170+ beds
- Over 75,000 employees within 5-miles of site
- Area retailers include: Walmart, Kohls, Menards, Ulta, Bed Bath & Beyond, Trader Joe's, Best Buy, Fresh Thyme

DEMOGRAPHICS

POPULATION	1 Mile	6,492
	3 Mile	56,091
	5 Mile	111,507
# HOUSEHOLDS	1 Mile	2,141
	3 Mile	20,426
	5 Mile	39,812
AVG HH INCOME	1 Mile	\$172,358
	3 Mile	\$132,593
	5 Mile	\$132,482

CONTACT

ALAN ERICKSON
 aerickson@lfirealestate.com
 (708) 390-1629





Location Finders International, Inc.
 9440 Enterprise Dr, Mokena, IL 60448
 (708) 390-1629

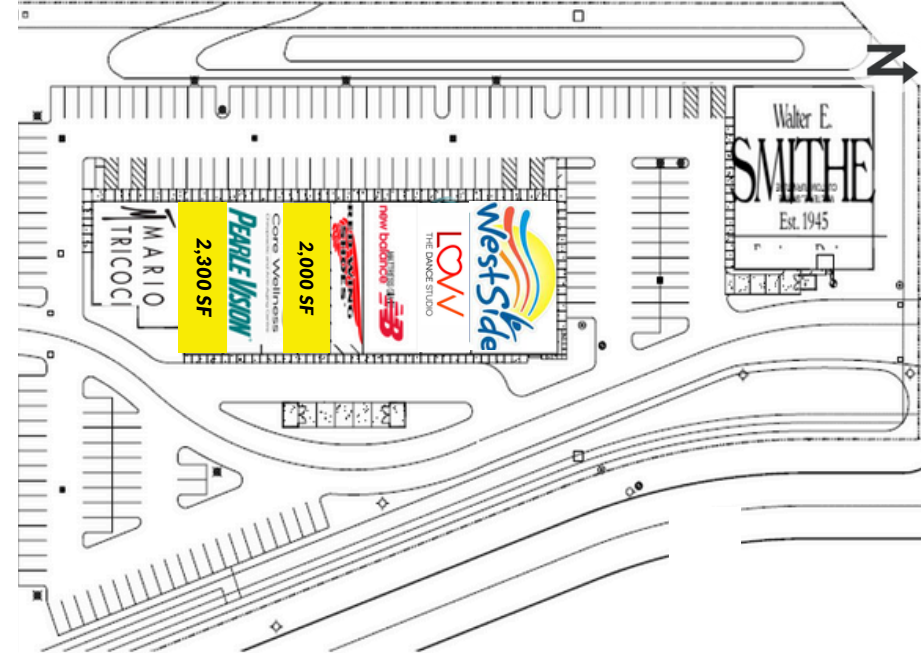
1749 S. Randall Road
 Geneva, IL

RETAIL SPACE AVAILABLE

2,000 & 2,300 SF

SITE SUMMARY

- Land Size: 4.44 AC
- GLA: 36,267 sf
- Walter E Smithe & Mario Tricoci anchored multi-tenant building
- Co-tenants include: New Balance, Red Wing, Core Wellness, Pearle Vision
- Available:
 - 2,300 SF inline space
 - 2,000 SF fully built-out office space
- Zoning: B-5
- Parking: +/- 165 parking spaces
- Access: Signalized intersection with access off Randall Road & Christina Lane
- Signage: Monument sign on Randall Road



CONTACT

ALAN ERICKSON
 aerickson@lfirealestate.com
 (708) 390-1629