

12361 DOHERTY STREET | RIVERSIDE, CA 92503

INDUSTRIAL BUILDING FOR SALE

WAREHOUSE/MANUFACTURING FACILITY WITH
91 FWY VISIBILITY AND FENCED YARD



LEE & ASSOCIATES
COMMERCIAL REAL ESTATE SERVICES

Lee & Associates Commercial Real Estate
Services, Inc.- Riverside
Corp ID# 01048055
4193 Flat Rock Drive, Suite 100
Riverside, CA 92505

JUSTIN NULL, SIOR
VICE PRESIDENT
951.276.3634
jnull@leeriverside.com
DRE License #01899025

PROPERTY FEATURES

AVAILABLE SF: ±7,555 SF

OFFICE SF: ±1,390 SF with 3 Restrooms

PROPERTY TYPE : Industrial Building

ZONING: M1 (Light Industrial)

GL DOORS: 2 (10x12 & 12x12)

CEILING HEIGHT : 14' - 16' (Verify)

PARKING RATIO: 2:1

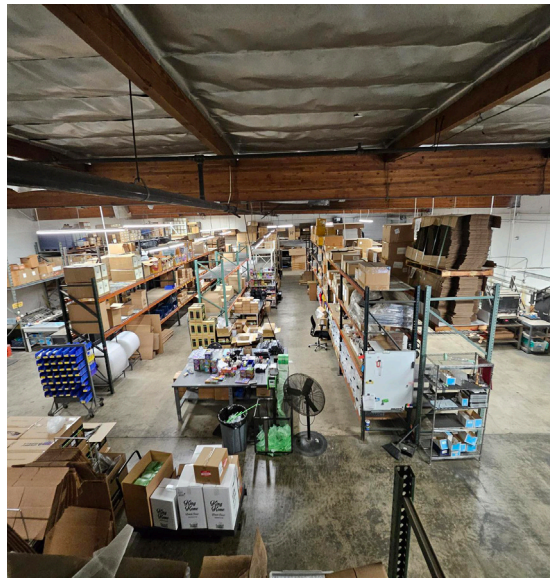
POWER: 200 Amps; 120/208 Volts (Verify)

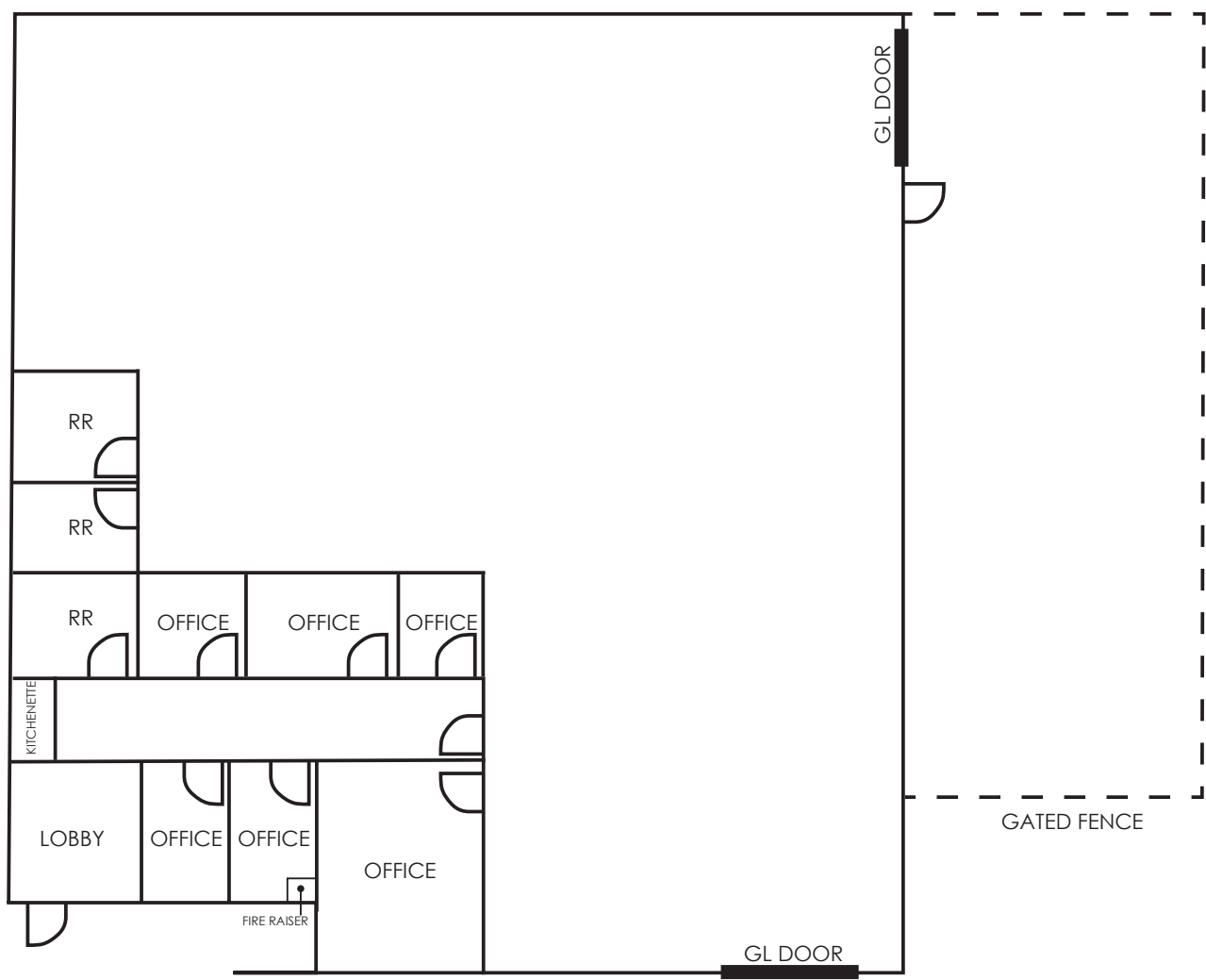
YARD: Fenced

FIRE SPRINKLER SYSTEM: Yes

COMMENTS: 91 Freeway Frontage
Mezzanine Storage not included in square footage
Easy Freeway

SALE PRICE: \$2,530,925 (\$335.00 PSF)





NOT TO SCALE



12361 DOHERTY STREET | RIVERSIDE, CA 92503

