

MIDWAY SHOPPING CENTER WYOMING, PA

1026 WYOMING AVENUE

±3,000- 7,810 SF ENDCAP AVAILABLE FOR LEASE

SCRANTON-WILKES-BARRE MSA

JOIN



LOCATED ±5 MILES NORTH OF WILKES-BARRE, PA



MetroCommercial.com | PLYMOUTH MEETING, PA | MOUNT LAUREL, NJ | MIAMI, FL | PHILADELPHIA, PA

get in touch.

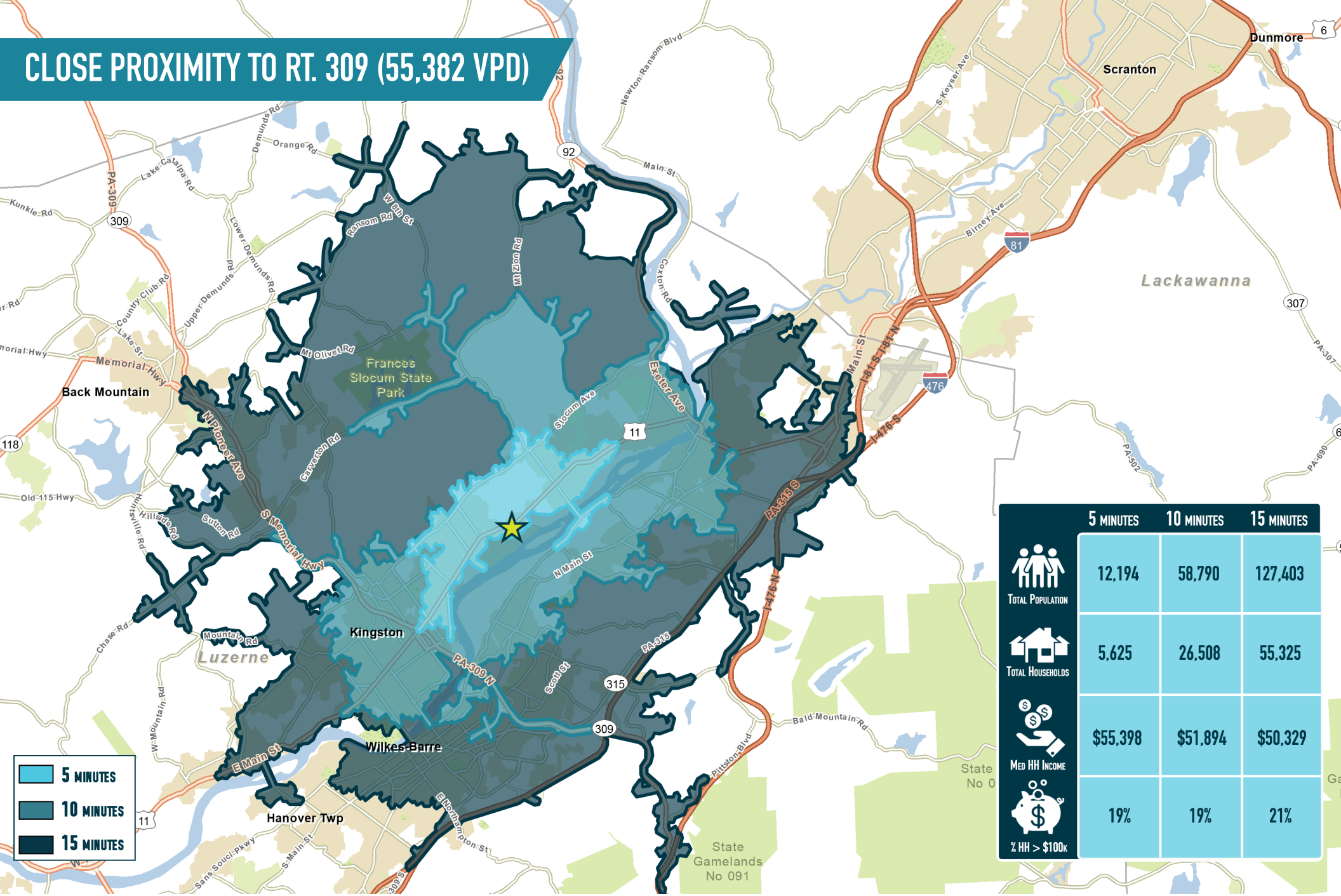
SAMUEL THIERS

office 610.825.5222
direct 610.260.2665
sthiers@metrocommercial.com

PAT GALLAGHER

office 610.825.5222
direct 610.260.2676
pgallager@metrocommercial.com

CLOSE PROXIMITY TO RT. 309 (55,382 VPD)



	5 MINUTES	10 MINUTES	15 MINUTES
TOTAL POPULATION	12,194	58,790	127,403
TOTAL HOUSEHOLDS	5,625	26,508	55,325
MED HH INCOME	\$55,398	\$51,894	\$50,329
% HH > \$100K	19%	19%	21%

The information and images contained herein are from sources deemed reliable. However, Metro Commercial Real Estate, Inc. makes no representation whatsoever as to their accuracy or authenticity. Images shown may be modified for illustrative purposes. Images may be out-of-date and not current. 01.24.24

MIDWAY SHOPPING CENTER
WYOMING, PA
 1026 WYOMING AVENUE



www.metrocommercial.com

ADJACENT TO WILKES-BARRE WYOMING VALLEY AIRPORT



The information and images contained herein are from sources deemed reliable. However, Metro Commercial Real Estate, Inc. makes no representation whatsoever as to their accuracy or authenticity. Images shown may be modified for illustrative purposes. Images may be out-of-date and not current. 01.24.24

MIDWAY SHOPPING CENTER
WYOMING, PA
 1026 WYOMING AVENUE



www.metrocommercial.com

SIGNALIZED ACCESS AND VISIBILITY FROM WYOMING AVENUE (17,648 VPD)



The information and images contained herein are from sources deemed reliable. However, Metro Commercial Real Estate, Inc. makes no representation whatsoever as to their accuracy or authenticity. Images shown may be modified for illustrative purposes. Images may be out-of-date and not current. 01.24.24

MIDWAY SHOPPING CENTER
WYOMING, PA
1026 WYOMING AVENUE



www.metrocommercial.com

GLA: ±236,910 SF



SITE KEY:

1	SANDLOT BASEBALL ACADEMY	10,000
2	NOVA TRAMPOLINE PARK	64,000
3	THE UPS STORE	1,600
4	NAIL SALON	1,600
5	HARBOR FREIGHT	20,000
6	RENT-A-CENTER	8,397
7	H&R BLOCK	2,400
8	DOMINO'S PIZZA	2,924
9	M&T BANK	3,900
10	NORTHEAST TITLE & TAG	900
11	PHYSICAL THERAPIST	3,200
12	HONG KONG RESTAURANT	2,000
13	EMPANADA KING	1,900
14	ANYTIME FITNESS	6,150
16	B POSTIVE	3,633
17	DOLLAR TREE	9,750
18	PRICE CHOPPER	53,277
21	GREEN DOG BAKERY	4,979
21A	CISNEY INSURANCE	1,515
21B	GREAT CLIPS	1,315
21C	CRYSTAL VISION	1,515
21D	AVAILABLE	4,567
21G	ANGELO'S RESTAURANT	3,800
21J	PA WINE & SPIRITS	3,446
22-23	AVAILABLE	7,810
PAD 1	LANDMARK BANK	2,520
NAP	BURGER KING	N/A
PAD 3	CVS	10,125
PAD 4	AUTOZONE	1.3 AC

The information and images contained herein are from sources deemed reliable. However, Metro Commercial Real Estate, Inc. makes no representation whatsoever as to their accuracy or authenticity. Images shown may be modified for illustrative purposes. Images may be out-of-date and not current. 01.24.24

MIDWAY SHOPPING CENTER
WYOMING, PA
 1026 WYOMING AVENUE



www.metrocommercial.com