



For Lease

Great Sizes

New Construction

35 ENTERPRISE

35 ENTERPRISE WAY - DAYTON - NEVADA - 89403

INDUSTRIAL FLEX SPACE COMPRISED OF 16 UNITS

1 UNIT - 1,557 SQ. FT. / 1 UNIT - 1,651 SQ. FT. / 2 UNITS - 2,588 SQ. FT. / 6 UNITS - 1,338 SQ. FT.



Lyle Chamberlain, CCIM

President

Lic# B.1000716

(775) 851-5310

LISTING DATA

AVAILABLE SF: Various from 1,588 SF
RATE: From \$1,985 NNN

PROPERTY DATA

JURISDICTION: LYON COUNTY
ZONING: GENERAL INDUSTRIAL
SPACE AVAILABLE: Various see Site Plan
DATE AVAILABLE: IMMEDIATE
POWER: 200 AMPS
CLEAR HEIGHT: 14'
LOADING: 12' OHD for ea Unit Elec Openers
HVAC: Gas Heater in ea Unit, Office areas have Splits



PROPERTY HIGHLIGHTS

- ◆ **GENERAL INDUSTRIAL ZONING :** Light Industry, Trucking, Warehousing. Service and Repair
- ◆ **NEW CONSTRUCTION:** Brand new facility. Elect OHD's. great sizes, New location!
- ◆ **CONVENIENT SIZES:** Great sizes for many uses. 1,588 to 3,138 SF
- ◆ **GREAT PRICING:** Convenient Sizes equal Affordable Prices. From \$1,985 NNN!!



Lyle Chamberlain, CCIM
President
Lic# B.1000716
(775) 851-5310

SITE PLAN



Lyle Chamberlain, CCIM

President

Lic# B.1000716

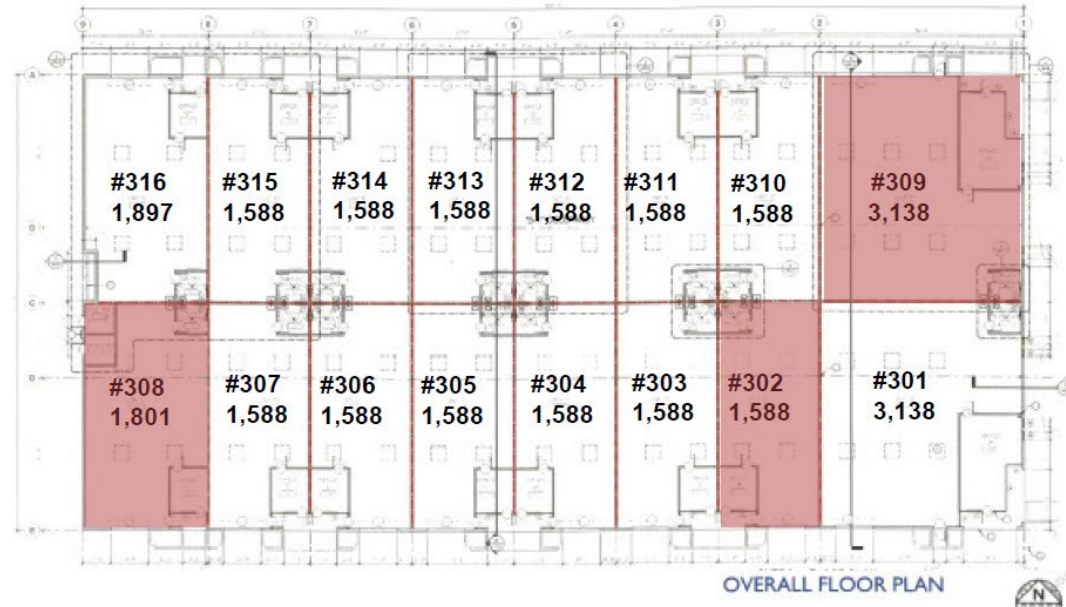
(775) 851-5310

Although the information has been obtained from sources deemed reliable, Owner, Lee & Associates, and/or their representatives, brokers or agents make no guarantee as to the accuracy of the information contained herein, and offer the Property without express or implied warranties of any kind. The Property, Units and/or Rates may be withdrawn and/or changed without notice.

FLOOR PLAN

Units	SF	
301	3,138	
302	1,588	LEASED
303	1,588	
304	1,588	
305	1,588	
306	1,588	
307	1,588	
308	1,801	LEASED
309	3,138	LEASED
310	1,588	
311	1,588	
312	1,588	
313	1,588	
314	1,588	
315	1,588	
316	1,897	

35 ENTERPRISE
 35 ENTERPRISE WAY - DAYTON - NEVADA - 89403
INDUSTRIAL FLEX SPACE COMPRISED OF 16 UNITS
 1 UNIT - 1,557 SQ. FT. / 1 UNIT - 1,651 SQ. FT. / 2 UNITS - 2,588 SQ. FT. / 6 UNITS - 1,338 SQ. FT.



Although the information has been obtained from sources deemed reliable, Owner, Lee & Associates, and/or their representatives, brokers or agents make no guarantee as to the accuracy of the information contained herein, and offer the Property without express or implied warranties of any kind. The Property, Units and/or Rates may be withdrawn and/or changed without notice.



Lyle Chamberlain, CCIM
 President
 Lic# B.1000716
 (775) 851-5310

ADDITIONAL PHOTOS



Lyle Chamberlain, CCIM
President
Lic# B.1000716
(775) 851-5310